

## Accessories for 2.838.0120

Below, the accessories are grouped into Scope of delivery and Optional accessories.  
Please keep this printout at hand for ordering replacement material.  
These lists may be subject to change.

### Scope of delivery 2.838.0120

| Qty.  | Order no.  | Description   |   |
|-------|------------|---|---|
| 1 pcs | 1.838.0020 | <b>838 Advanced IC Injection Sample Processor</b><br>Advanced IC Sample Processor with six-way injector for applications that require an additional injector. |    |
| 1 pcs | 6.1414.070 | <b>Dilution vessel lid IC</b><br>Lid for the dilution vessel with connections for inlet and outlet capillaries. For Advanced IC Dilution Sample Processor     |  |
| 1 pcs | 6.1446.000 | <b>SGJ stopper / B-14/(15)</b>  |  |
| 1 pcs | 6.1456.210 | <b>Measuring vessel / 10-90 mL</b><br>Measuring vessel for automated VA systems. Dilution vessel for Advanced IC Sample Processor                             |  |

---

**1 pcs**    **6.1608.070**    **Eluent bottle / 2 L / GL 45**



---

**3 pcs**    **6.1608.080**    **Bottle / 300 mL**

Rinsing vessel for IC Sample Processors.



---

**1 pcs**    **6.1619.010**    **Adsorber complete, for Exchange Unit**



---

**1 pcs**    **6.1803.060**    **PTFE capillary 0.97 mm i.d. / 20 cm**

Capillary for filtration, for IC Filtration Sample Processor



---

**2 pcs**    **6.1803.070**    **PTFE capillary 0.97 mm i.d. / 40 cm**

Capillary for filtration, for IC Filtration Sample Processor, IC Liquid Handling Filtration Unit



---

**3 pcs**     **6.1803.080**     **PTFE capillary 0.97 mm i.d. / 1 m**  
Capillary for filtration, for IC Filtration Sample Processor, IC Liquid Handling Filtration Unit



---

**1 pcs**     **6.1803.110**     **PTFE capillary 0.97 mm i.d. / 50 cm**  
Used with the Advanced IC Dilution Sample Processor



---

**1 pcs**     **6.1803.120**     **PTFE transfer capillary 0.97 mm ID / 3 m**  
Used in the Advanced IC Dilution Sample Processor



---

**2 pcs**     **6.1826.380**     **Pump tubing LFL (gray/gray), 3 stoppers**  
For Inline Dilution



---

**1 pcs**     **6.2001.070**     **Support stand for Sample Processors**  
Support stand for Sample Processors, for external titrations and dilutions (IC)



---

**1 pcs**    **6.2013.010**    **Clamping ring**

For support rods with a diameter of 10 mm.



---

**1 pcs**    **6.2036.000**    **Mounting ring for titration vessel**



---

**1 pcs**    **6.2064.000**    **Beaker retainer for Advanced IC Sample Processor**

Retaining plate for 838 Advanced Sample Processors. For holding 2.5 or 11 mL vials.



---

**1 pcs**    **6.2134.100**    **RS-232 cable, 5 m, DB9 – DB9**

Connecting Metrohm RS-232 interface to Titrinos, 756 KF Coulometer, 762 or 771 IC Interfaces, 790 Personal IC, 743 Rancimat, 763 PVC Thermomat, 873 Biodiesel Rancimat.



---

**1 pcs**    **6.2141.190**    **Cable 732/819-766/788/838**

Cable IC Detector - Advanced Sample Processor



---

**1 pcs**    **6.2621.300**    **Tool set for Advanced IC Sample Processors**

Tool set consisting of open-end wrenches and hexagon keys.



---

**1 pcs**    **6.2727.010**    **Intermediate SGJ sleeve**  
Used with reference and auxiliary electrodes in measuring and titration vessel with 6.1414.010 lid



---

**1 pcs**    **6.2730.030**    **Stopper**  
Complete with nipple and O-ring. For 6.1414.030 titration vessel lids. For KF instruments, VA measurement stands, VA Computrace and IC Dilution.



---

**1 pcs**    **6.2739.000**    **Wrench**  
For tightening connectors



---

**3 pcs**    **6.2744.010**    **Pressure screw 5x**  
With UNF 10/32 connection. For the connection of PEEK capillaries



---

**1 pcs**    **6.2744.034**    **Coupling olive/UNF 10/32, 2x**  
Connection between pressure screw and pump tubing. 2 pieces. For IC instruments with peristaltic pump.



---

**2 pcs**    **6.2744.060**    **Threaded stopper**

For UNF 10/32. Stopper for IC, e.g. for the sealing of columns.



---

**1 pcs**    **6.2744.080**    **M6 thread / UNF 10/32 adapter**

With M6 outer thread. For IC instruments.



---

**1 pcs**    **6.2744.160**    **Nozzle/UNF 10/32 coupling with security device**

Security device for connecting pump tubing to a nozzle.



---

**1 pcs**    **6.2751.110**    **Safety shield**

Safety shield for the Advanced IC/VA Sample Processors.





---

**1 pcs**    **6.2846.010**    **Sample needle made of zirconium oxide with PEEK tip**

Sample needle for Sample Processors and Autosampler in ion chromatography. The PEEK tip guarantees secure piercing of the vial covering.



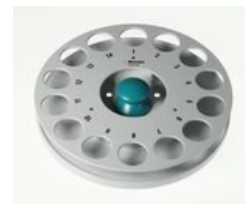
## Optional accessories

| Order no.         | Description  |   |
|-------------------|--|---|
| <b>6.1562.130</b> | <b>Transfer Tubing with holder 2 x M6 / 10 mL to Sample Processors</b>                 |    |
|                   | Transfer tubing for dilution and preconcentration using a Dosino and Sample Processor. |   |
| <b>6.2041.310</b> | <b>Sample rack 12 x 250 mL</b>   |    |
|                   | Sample rack for 12 x 250 mL, one row   |   |
| <b>6.2041.320</b> | <b>Sample rack 16 x 150 mL</b>   |   |
|                   | Sample rack for 16 x 150 mL samples, one-row   |   |
| <b>6.2041.340</b> | <b>Sample rack 24 x 75 mL</b>  |  |
|                   | Sample rack for 24 x 75 mL samples, one-row.   |   |
| <b>6.2041.350</b> | <b>Sample rack 48 x 75 mL</b>  |  |
|                   | Sample rack for 48 x 75 mL samples, two-row  |   |
| <b>6.2041.360</b> | <b>Sample rack for 12 x 150 mL</b>   |  |
|                   | Sample rack for 12 x 150 mL samples, one-row   |   |
| <b>6.2041.370</b> | <b>Sample rack 14 x 200 mL</b>   |  |
|                   | Sample rack for 14 x 200 mL samples, one-row   |   |

---

**6.2041.380      Sample rack 14 x 235 mL**

Sample rack for 14 x 235 mL samples, one-row



---

**6.2041.430      Sample rack 127 x 11 mL**

Sample rack for 127 x 11 mL samples with 2 rinsing beakers.



---

**6.2041.440      Sample rack 148 x 11 mL + 3 x 300 mL**

Sample rack for 148 x 11 mL samples with 3 rinsing beakers.



---

**6.2041.450      Sample rack 56 x 11 mL + 56 x 50 mL**

Multi-row sample rack for 56 samples in 11 mL sample vessels (6.2743.050) and 56 samples in sample vessels of 50 mL (6.2747.010).



---

**6.2041.760      Sample rack 54 x 11 mL + 1 x 300 mL**

Sample rack with small diameter for 54 x 11 mL sample vessels in two rows and additionally 1 x 300 mL bottle.



---

**6.2629.000      Screw nut to needle holder IC**

On Sample Processors





---

**6.2743.050      Sample tubes 11 mL**

2000 pieces. For IC Sample Processors and VA Autosampler



---

**6.2743.057      Sample tubes 11 mL**

200 pieces. For IC Sample Processors and VA Autosampler



---

**6.2743.070      Stopper with perforation**

2000 pieces. For IC Sample Processors



---

**6.2743.077      Stopper with perforation**

200 pieces. For IC Sample Processors

