




## Accessories for 2.855.0030

Below, the accessories are grouped into Scope of delivery and Optional accessories.  
Please keep this printout at hand for ordering replacement material.  
These lists may be subject to change.

### Scope of delivery 2.855.0030

Qty.	Order no.	Description	
1 pcs	1.855.0030	<b>Robotic Titrosampler "Light" (1T/1P)</b>	
		<p>Entry-level model of the Robotic Titrosampler for medium sample throughput. The space-saving Robotic Sample Processor XL with integrated Titrando, one workstation and one built-in membrane pump is expanded to become application-specific automation in titration through the selection of sample rack and electrode. Either an external peristaltic pump or membrane pump can be connected for aspiration of the titrated solution (optional). The programming of the methods is accomplished by means of the handy <b>Touch Control</b> or with the <b>tiamo™</b> titration software.</p> <p>With increasing sample throughputs, the Robotic Titrosampler "Light" can be expanded simply and inexpensively to become the "Basic" model with which many times the original sample quantity can be managed.</p>	
2 pcs	6.1236.020	<b>Sleeve with SGJ 14/12 mm</b>	
		Sleeve with SGJ 14/12 mm and O-ring.	
1 pcs	6.1621.000	<b>Container 10 L</b>	
		As rinsing or waste container in automated systems.	

---

**3 pcs**     **6.1805.420**     **FEP tubing / M6 / 48 cm**  
With light and kink protection



---

**1 pcs**     **6.1812.000**     **PTFE tubing 4 mm / 6 mm / 4 m**



---

**1 pcs**     **6.1828.000**     **PVDF connection nipple**

For 6.1621.000 canister.



---

**1 pcs**     **6.2053.000**     **Cable clip**  
Cable clip for fastening cables and tubes



---

**1 pcs**     **6.2103.130**     **Adapter red 2 mm plug / 4 mm socket**  
For connecting plug B (4 mm) to 2 mm socket.



---

**1 pcs**     **6.2103.140**     **Adapter black 2 mm plug / B socket 4 mm**  
For connecting plug B (4 mm) to 2 mm socket.



---

**1 pcs**     **6.2151.000**     **Cable USB A – mini-DIN 8-pin**  
Controller cable



---

**1 pcs**     **6.2621.030**     **Hexagon key 4 mm**



---

**1 pcs**     **6.2621.070**     **5 mm hex key for IC Sample Processors**



---

**1 pcs**     **6.2621.130**     **Hexagon key 2 mm**  
2 mm.



---

**1 pcs**      **6.2621.140**      **Hexagon key 2.5 mm**



---

**3 pcs**      **6.2740.020**      **Spray nozzle**

For the fine-spraying of the rinsing solution.



---

**1 pcs**      **6.2751.190**      **Safety shield for 855 Robotic Titrosampler "Light"**

Safety shield for 855 Robotic Titrosampler "Light"



## Optional accessories

Order no.	Description
-----------	-------------

**2.741.0010**      **741 Magnetic Stirrer**

Magnetic stirrer for sample changers.

The magnetic stirrer is located beneath the sample rack.



**2.772.0120**      **772 Pump Unit – aspirate**

Peristaltic pump for direct connection to Sample Processors. The "Aspiration" version contains extensive accessories for the aspiration of titered-out solutions.



**2.802.0020**      **802 Stirrer**

Rod stirrer for sample changer and Sample Processor.

With 6.1909.020 Propeller stirrer 104 mm and fixed cable.



**2.823.0020**      **823 Membrane Pump Unit «aspirate»**

Membrane pump for direct connection to Sample Processors. The «Aspiration» version contains numerous accessories for aspirating off solutions.



---

**2.849.0010      849 Level Control**

Additional equipment for Sample Processors for monitoring the filling level of rinsing or waste canisters via Remote. Prevents pumps from running dry and/or canisters from overflowing and is suitable for use with aqueous solutions, solvents and suspensions.



---

**6.1458.010      Titration head, 6 x SGJ 14 and 3 x SGJ 9 openings**

With 6xSGJ 14 and 3x SGJ 9 apertures.



---

**6.1458.020      Titration head /4 x M10 connectors**

With 4 M10 screw nipples, including stoppers.



---

**6.1458.030      KF titration head /4 x M10 connectors**

With 4 M10 screw nipples, including stoppers.



---

**6.1458.040      Titration Head, 3 x SGJ 14**

Titration head for 120 mL beakers. With 3 openings SGJ 14 and 4 openings 6.4 mm, 2 dosing tips included. Suitable for rinsing and aspiration equipment.



---

**6.1458.070 Titration head / 2 x SGJ 14**

Titration head for 75 mL beakers. With 2 openings SGJ 14, 2 openings 6.4 mm, 1 opening M10 and 3 pre-mounted dosing tips. Suitable for rinsing and aspiration equipment.



---

**6.1909.010 Stirring propeller / 96 mm**

Propeller stirrer, length from lower edge of SGJ: 96 mm. For use with beakers with 722, 802 Rod Stirrer



---

**6.1909.020 Stirring propeller / 104 mm**

Propeller stirrer, length from lower edge of SGJ: 104 mm. For use with beakers with 722, 802 Rod Stirrer



---

**6.1909.030 Stirring propeller / 104 mm**

Propeller stirrer with PP shaft, PVDF tip. Length from the SGJ: 104 mm. For KF applications with 722, 802 Rod Stirrer



---

**6.1909.040          Stirring propeller / 102 mm**

Propeller stirrer, length from lower edge of SGJ: 102 mm. For titration vessels with SGJ 14/15 and 722, 802 Rod Stirrer



---

**6.1909.050          Propeller for 120 mL beaker (6.1459.300)**

Propeller for 802 Stirrer when this is used with sample racks for 120 mL beakers (6.1459.300)



---

**6.2041.310          Sample rack 12 x 250 mL**

Sample rack for 12 x 250 mL, one row



---

**6.2041.320          Sample rack 16 x 150 mL**

Sample rack for 16 x 150 mL samples, one-row



---

**6.2041.340          Sample rack 24 x 75 mL**

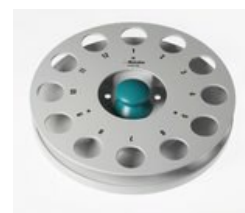
Sample rack for 24 x 75 mL samples, one-row.



---

**6.2041.360          Sample rack for 12 x 150 mL**

Sample rack for 12 x 150 mL samples, one-row





---

**6.2041.370      Sample rack 14 x 200 mL**

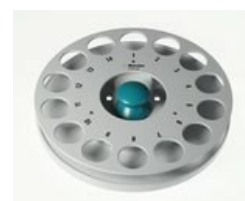
Sample rack for 14 x 200 mL samples, one-row



---

**6.2041.380      Sample rack 14 x 235 mL**

Sample rack for 14 x 235 mL samples, one-row



---

**6.2041.390      Sample rack 16 x 120 mL**

Sample rack for 16 x 120 mL samples, one-row



---

**6.2041.460      Sample rack 21 x 100 mL (COD)**

Sample rack 21 x 100 mL for the determination of COD



---

**6.2041.470      Sample rack 22 x 120 mL**

Sample rack for 22 x 120 mL samples (6.1459.300), single-row.



---

**6.2058.110      Tower extension for Sample Processors**

Height extension 130 mm for Sample Processors. Tower extension for COD applications.



---

**6.2711.060      Drip pan for 778/810/814/838/858 Sample Processors**

Drip pan for 778, 810, 814, 838, 858 Sample Processors



---

**6.2711.070**

**Drip pan for 789/815/855**

Drip pan for 789, 815, 855 Robotic Sample Processors XL

