





## Accessories for 2.836.0010

Below, the accessories are grouped into Scope of delivery and Optional accessories.  
Please keep this printout at hand for ordering replacement material.  
These lists may be subject to change.

### Scope of delivery 2.836.0010

Qty.	Order no.	Description	
1 pcs	1.836.0010	<b>836 Titrando</b> High-end titrator for up to four 800 Dosino dosing systems. Dynamic (DET) and monotonic (MET) titration, endpoint titration (SET), enzymatic and pH-STAT titrations (STAT), Karl Fischer titration (KFT), measurements with ion-selective electrodes (MEAS CONC), dosing functions with monitoring (DOS), liquid handling. With four MSB connections, one galvanically separate measuring interface, USB connection.	
1 pcs	6.0262.100	<b>Ecotrode Plus</b> Combined pH electrode for aqueous acid/base titration. The fixed ground-joint diaphragm is insensitive to contamination. Reference electrolyte: c(KCl) = 3 mol/L, storage in storage solution.	
2 pcs	6.2043.005	<b>Holding clip for bottles</b> Holding spring for reagent bottles in exchange units.	
1 pcs	6.2103.130	<b>Adapter red 2 mm plug / 4 mm socket</b> For connecting plug B (4 mm) to 2 mm socket.	

---

**1 pcs**      **6.2103.140**      **Adapter black 2 mm plug / B socket 4 mm**  
For connecting plug B (4 mm) to 2 mm socket.







---

**1 pcs**      **6.2104.020**      **Electrode cable / 1 m / F**  
For connecting electrodes with Metrohm plug-in head G to Metrohm instruments (socket F).



## Optional accessories

Order no.	Description	
<b>2.800.0010</b>	<b>800 Dosino</b>	
	Drive with write/read hardware for intelligent Dosing Units. With fixed cable (length 150 cm).	
<b>2.801.0040</b>	<b>801 Stirrer with stand</b>	
	Magnetic stirrer including base plate, support rod and electrode holder for supplementing the Titrino plus, Dosimat plus, Titrandos, Sample Processors, 805 Dosimat and 780/781 pH meters as well as the 856 and 867 measuring modules. With permanently attached cable for MSB (Metrohm Serial Bus).	
<b>2.802.0040</b>	<b>802 Stirrer (propeller stirrer) for 804 Ti Stand</b>	
	Rod stirrer with 6.1909.010 Propeller stirrer.	
<b>2.803.0010</b>	<b>803 TI Stand with stirrer and pump</b>	
	Compact titration stand with magnetic stirrer and built-in pump for solvent addition and aspiration of the titration vessel contents. Suitable for Karl Fischer titrations with Titrandos. MSB connection. Including comprehensive accessories, solvent bottle and waste bottle.	

---

**2.804.0040                    804 Ti Stand with stand**

Titration stand and controller for 802 Rod Stirrer. The 804 Ti Stand together with the optional 802 Rod Stirrer provides an alternative to the magnetic stirrer. Ti Stand with base plate, support rod and electrode holder.



---

**2.805.0010                    805 Dosimat**

Dosing device for the Titrandos and Sample Processors with read/write hardware for intelligent Exchange Units. With permanently attached cable. Without Exchange Unit.



---

**6.2001.090                    Base plate on both sides**

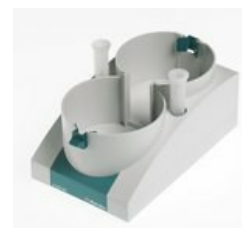
Double stand for attaching 2 x 801, 803, 804 to a Titrandos



---

**6.2061.010                    Bottle holder for Dosinos**

Bottle holder for up to two Dosinos, mounted on 1 L reagent bottles.



---

**6.2104.030 Electrode Cable 2 m / F**

For connecting electrodes with Metrohm plug-in head G to Metrohm instruments (socket F).



---

**6.2104.140 Electrode cable / 1 m / 2 x 2 mm**

For connecting temperature sensors with Metrohm plug-in head G with 780, 781, 826, 827 pH/Ion meters and all Titrandos



---

**6.2104.150 Electrode cable 2 m, 2 x 2 mm**

For connecting temperature sensors with Metrohm plug-in head G with 780, 781, 826, 827 pH/Ion meters and all Titrandos



---

**6.2106.020 Strand / 1 m / 2 x B**

Electrode cable with 2 x plug B (4 mm) for connecting electrodes with plug-in head B



---

**6.2106.060 Strand / 2 m / 2 x B**

Electrode cable with 2 x plug B (4 mm) for connecting electrodes with plug-in head B



---

**6.2125.010 RS-232 cable 3 m, 25-pin – 9-pin**

Connecting RS-232 interface to IBM PC AT or compatible computer. Adapter 25-pin to 9-pin



---

**6.2125.020 RS-232 cable 3 m, 25-pin – 25-pin**

Connecting Metrohm RS-232 interface with Seiko printer DPU-41X, AND or Mettler balances (option 011, 012). For 691, 692, 713 pH Meters, Titrinos, or 737 KF Coulometer. RS-232 extension cable (1:1) with special EMC shielding.



---

**6.2134.040 RS-232 DB9 - IBM-PC(DB9) connecting cable**

For the Metrohm RS-232 interface - PC connection. For Titrinos, Titrino plus and 756, 831 KF Coulometer, RS-232/USB Box



---

**6.2134.060 Connecting cable RS-232 to Sartorius MP8**

Connecting Metrohm RS-232 interface to Sartorius balance. Used with Titrinos, and 756, 831 KF Coulometer, RS-232/USB Box



---

**6.2134.110 Cable RS-232 DB9 socket f – DB9 plug**

Connecting Metrohm RS-232 interface (DB9) to a Custom DP40 printer. For Titrinos or 756/831 KF Coulometer. RS-232 extension cable (1:1)



---

**6.2134.120 Cable RS-232 to Mettler AX**

Connecting Metrohm RS-232 interface to Mettler AX



---

**6.2148.010 Remote Box MSB**

Additional remote interface for the connection of devices that can be controlled via remote lines. With permanently attached cable.



---

**6.2148.020 RS-232/USB box**

Extends the Titrando, USB Sample Processors, Dosing Interface, Titrosampler by two RS-232 interfaces for connecting e.g. balances, PC, LIMS. Requires 6.2151.030 cable.



---

**6.2151.000 Cable USB A – mini-DIN 8-pin**

Controller cable



---

**6.2151.030**      **Cable USB A - USB B / 0.6 m**

Connecting cable USB A - USB B



---

**6.3026.110**      **Exchange Unit 1 mL**

Exchange Unit with integrated data chip with 1 mL glass cylinder and light protection. PCTFE/PTFE flat stopcock, FEP tubing connection, antidiffusion buret tip and standard amber glass reagent bottle.



---

**6.3026.150**      **Exchange Unit 5 mL**

Exchange Unit with integrated data chip with 5 mL glass cylinder and light protection. PCTFE/PTFE flat stopcock, FEP tubing connection, anti-diffusion buret tip and standard amber glass reagent bottle.



---

**6.3026.210**      **Exchange Unit 10 mL**

Exchange unit with integrated data chip with 10 mL glass cylinder and light protection. PCTFE/PTFE flat stopcock, FEP tubing connection, anti-diffusion buret tip and standard amber glass reagent bottle.



---

**6.3026.220 Exchange Unit 20 mL**

Exchange unit with integrated data chip with 20 mL glass cylinder and light protection. PCTFE/PTFE flat stopcock, FEP tubing connection, anti-diffusion buret tip and standard amber glass reagent bottle.



---

**6.3026.250 Exchange unit 50 mL**

Exchange unit with integrated data chip with 50 mL glass cylinder and light protection. PCTFE/PTFE flat stopcock, FEP tubing connection, antidiiffusion tip and standard amber glass reagent bottle.



---

**6.3032.120 Dosing Unit 2 mL**

Dosing unit with integrated data chip with 2 mL glass cylinder and light protection, mountable on reagent bottle with ISO/DIN GL45 glass thread. FEP tubing connection, anti-diffusion buret tip.



---

**6.3032.150 Dosing Unit 5 mL**

Dosing unit with integrated data chip with 5 mL glass cylinder and light protection, mountable on reagent bottle with ISO/DIN GL45 thread. FEP tubing connection, anti-diffusion buret tip.



---

**6.3032.210 Dosing Unit 10 mL**

Dosing unit with integrated data chip with 10 mL glass cylinder and light protection, mountable on reagent bottle with ISO/DIN GL45 thread. FEP tubing connection, anti-diffusion buret tip.



---

**6.3032.220 Dosing Unit 20 mL**

Dosing unit with integrated data chip with 20 mL glass cylinder and light protection, mountable on reagent bottle with ISO/DIN GL45 thread. FEP tubing connection, anti-diffusion buret tip.





---

**6.3032.250                    Dosing Unit 50 mL**

Dosing unit with integrated data chip with 50 mL glass cylinder and light protection, mountable on reagent bottle with ISO/DIN GL45 thread. FEP tubing connection, anti-diffusion buret tip.



---

**6.5104.030                    Differential amplifier plug F / 230 V EU**

Differential amplifier with power supply.



---

**6.5104.040                    Differential amplifier with plug F / 115 V US**

Differential amplifier with power supply.



---

**6.5609.000                    KF equipment**

Karl Fischer equipment for volumetry, complete set of accessories for Karl Fischer water determination

