

Accessories for 2.778.0030

Below, the accessories are grouped into Scope of delivery and Optional accessories.
Please keep this printout at hand for ordering replacement material.
These lists may be subject to change.

Scope of delivery 2.778.0030

Qty.	Order no.	Description	
2 pcs	6.1236.020	Sleeve with SGJ 14/12 mm Sleeve with SGJ 14/12 mm and O-ring.	
1 pcs	6.1805.110	FEP tubing / M6 / 80 cm With light and kink protection	
1 pcs	6.2621.030	Hexagon key 4 mm	
1 pcs	6.2621.070	5 mm hex key for IC Sample Processors	

1 pcs **6.2621.140** **Hexagon key 2.5 mm**

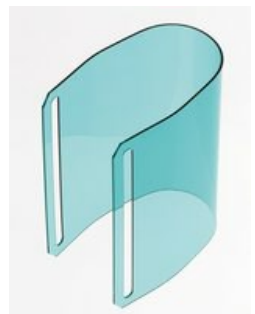


3 pcs **6.2709.070** **Guiding sleeve**
For fixation of buret and dosing tips in titration heads and electrode holders



1 pcs **6.2751.080** **Safety shield**

Safety shield for single-tower Sample Processors without 786 Swing Head.



Optional accessories

Order no.	Description
-----------	-------------

2.741.0010 **741 Magnetic Stirrer**

Magnetic stirrer for sample changers.

The magnetic stirrer is located beneath the sample rack.



2.772.0120 **772 Pump Unit – aspirate**

Peristaltic pump for direct connection to Sample Processors. The "Aspiration" version contains extensive accessories for the aspiration of titrated-out solutions.



2.772.0130 **772 Pump Unit – rinse**

Peristaltic pump for direct connection to Sample Processors. The "Rinse" version contains extensive accessories for rinsing.



2.802.0020 **802 Stirrer**

Rod stirrer for sample changer and Sample Processor.

With 6.1909.020 Propeller stirrer 104 mm and fixed cable.



2.823.0020 823 Membrane Pump Unit «aspirate»

Membrane pump for direct connection to Sample Processors. The «Aspiration» version contains numerous accessories for aspirating off solutions.



2.823.0030 823 Membrane Pump Unit «rinse»

Membrane pump for direct connection to Sample Processors. The «Rinsing» version contains numerous rinsing accessories.



2.843.0050 843 Pump Station (membrane) - rinse/aspirate for Sample Processors

The 843 Pump Station (membrane) has two built-in membrane pumps. These can be controlled directly from the Sample Processor via pump commands. The Rinse / Aspirate version is provided with all the accessories needed for automatically emptying the titration beaker and rinsing the titration equipment. The accessories are intended for use with the 814 and 815 Sample Processors.



2.843.0150 843 Pump Station (peristaltic) - rinse/aspirate for Sample Processors

The 843 Pump Station (peristaltic) has two built-in peristaltic pumps. These can be controlled directly from the Sample Processors via pump commands. The rinse/aspirate version is provided with all the accessories needed for automatically emptying the titration beaker and rinsing the titration equipment. The accessories are intended for use with the 814 and 815 Sample Processors.



6.1458.010 Titration head, 6 x SGJ 14 and 3 x SGJ 9 openings

With 6xSGJ 14 and 3x SGJ 9 apertures.



6.1458.020 Titration head /4 x M10 connectors

With 4 M10 screw nipples, including stoppers.



6.1458.030 KF titration head / 4 x M10 connectors

With 4 M10 screw nipples, including stoppers.



6.1458.040 Titration Head, 3 x SGJ 14

Titration head for 120 mL beakers. With 3 openings SGJ 14 and 4 openings 6.4 mm, 2 dosing tips included.



6.1458.070 Titration head / 2 x SGJ 14

Titration head for 75 mL beakers. With 2 openings SGJ 14, 2 openings 6.4 mm, and 3 pre-mounted dosing tips.



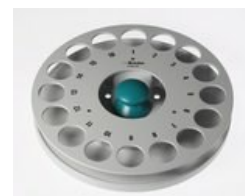
6.2041.310 Sample rack 12 x 250 mL

Sample rack for 12 x 250 mL, one row



6.2041.320 Sample rack 16 x 150 mL

Sample rack for 16 x 150 mL samples, one-row



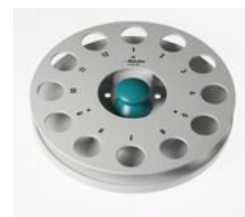
6.2041.340 Sample rack 24 x 75 mL

Sample rack for 24 x 75 mL samples, one-row.



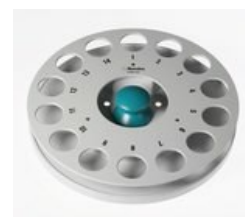
6.2041.360 Sample rack for 12 x 150 mL

Sample rack for 12 x 150 mL samples, one-row



6.2041.370 Sample rack 14 x 200 mL

Sample rack for 14 x 200 mL samples, one-row



6.2041.390 Sample rack 16 x 120 mL

Sample rack for 16 x 120 mL samples, one-row



6.2041.470 Sample rack 22 x 120 mL

Sample rack for 22 x 120 mL samples (6.1459.300), single-row.



6.2141.300 Remote cable 843 Pump Station to Sample Processor

Remote cable for the direct connection of the 843 Pump Station to the pump connectors of the Sample Processors



6.2711.060 Drip pan for 778/810/814/838/858 Sample Processors

Drip pan for 778, 810, 814, 838, 858 Sample Processors

