





Accessories for VoltIC Professional 1

Below, the accessories are grouped into Scope of delivery and Optional accessories.
Please keep this printout at hand for ordering replacement material.
These lists may be subject to change.

Scope of delivery VoltIC Professional 1

| Qty. | Order no. | Description | |
|-------|------------|--|---|
| 1 pcs | 2.800.0010 | 800 Dosino |  |
| | | Drive with write/read hardware for intelligent Dosing Units. With fixed cable (length 150 cm). | |
| 1 pcs | 2.843.0240 | 843 Membrane Pump Station for Professional VA/CVS systems |  |
| | | The 843 Membrane Pump Station enables the automatic rinsing and emptying of the measuring vessel in partly automated and fully automated Professional VA and CVS systems. It has two built-in membrane pumps that can be controlled via the remote signal. | |
| | | The versions for VA and CVS are equipped with the complete accessories for the automatic rinsing and emptying of the measuring vessel. | |
| 2 pcs | 2.850.9010 | IC Conductivity Detector |  |
| | | Compact and intelligent high performance conductivity detector for intelligent IC instruments. Outstanding temperature stability, the complete signal processing within the protected detector block and the latest generation of DSP – Digital Signal Processing – guarantee the highest precision of the measurement. No change of measuring ranges (not even automatic ones) is required, due to the dynamic working range. | |
| 1 pcs | 2.858.0010 | 858 Professional Sample Processor |  |
| | | The 858 Professional Sample Processor processes samples from 500 µL to 500 mL. The sample transfer takes place either by means of a peristaltic pump on the 850 Professional IC system or with an 800 Dosino. | |

1 pcs 2.884.1110 884 Professional VA semiautomated for MME

884 Professional VA semi-automated for MME is a convenient high-end routine analyzer for trace determinations with voltammetry and polarography with the Multi-Mode Electrode pro or the scTRACE Gold. The proven Metrohm electrode methods in combination with a completely new design of potentiostat/galvanostat and the extremely high-performance **viva** software opens up new perspectives for the determination of heavy metals. The potentiostat with a certified calibrator readjusts itself automatically before each measurement, thus guaranteeing maximum precision.



Determinations with rotating disc electrodes can also be performed with the instrument, e.g. determinations of organic additives in electroplating baths with "Cyclic Voltammetric Stripping" (CVS), "Cyclic Pulse Voltammetric Stripping" (CPVS), and chronopotentiometry (CP). The replaceable measuring head enables rapid changes between various applications with different electrodes.

Two 800 Dosinos (supplied) permit the automatic addition of auxiliary solutions during the determination, e.g., electrolyte, buffer or standard solutions.

The **viva** software is required for control, data acquisition, and evaluation.

The 884 Professional VA semi-automated for MME is supplied with extensive accessories and a measuring head for the Multi-Mode Electrode pro. Electrode set and **viva** license need to be ordered separately.

1 pcs 2.940.2500 940 Professional IC Vario TWO/SeS/PP

The 940 Professional IC Vario TWO/SeS/PP is the intelligent **two-channel** IC instrument with **sequential suppression** (one channel) and a **peristaltic pump** for suppressor regeneration. The instrument can be used with any separation and detection methods.



Typical areas of application:

- Standard instrument for parallel anion and cation determinations
- Trace analysis for anions and cations
- Online monitoring for anions and cations

1 pcs 6.1618.020 Thread adapter S 40 to GL 45

Adapter for bottles with S40 thread (Merck...) to GL45.



1 pcs 6.1805.020 FEP tubing / M6 / 52 cm

With light and kink protection



1 pcs **6.1805.530** **FEP tubing / M6 / 2 m**
With light and kink protection

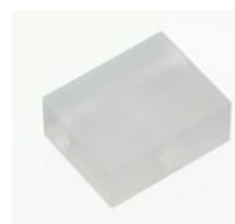


1 pcs **6.1808.010** **Coupling piece 2 X M6**
2 M6 outer threads. Part of the screw connections for Exchange Units and 676 Sample Changer



1 pcs **6.1808.060** **T connector / M6 inner**

3 M6 inner threads.



1 pcs **6.1808.280** **Adapter Dosino port 4, M6 inner**

Adapter for use with Dosino port 4 in IC. For connecting to M6 connector.



| | | |
|-------|--|---|
| 1 pcs | 6.1831.020 PEEK capillary 0.75 mm i.d., 22 cm For all IC components. |  |
| 1 pcs | 6.1831.080 PEEK capillary 0.75 mm i.d., 110 cm For Advanced VA Sample Processor |  |
| 1 pcs | 6.2041.450 Sample rack 56 x 11 mL + 56 x 50 mL Multi-row sample rack for 56 samples in 11 mL sample vessels (6.2743.050) and 56 samples in sample vessels of 50 mL (6.2747.010). |  |
| 1 pcs | 6.2057.210 Holder for Dosino to IC instruments Mounting part for Dosinos at the IC instrument housing. |  |
| 1 pcs | 6.2134.040 RS-232 DB9 - IBM-PC(DB9) connecting cable For the Metrohm RS-232 interface - PC connection. For Titrinos, Titrino plus and 756, 831 KF Coulometer, RS-232/USB Box |  |
| 1 pcs | 6.2141.300 Remote cable 843 Pump Station to Sample Processor Remote cable for the direct connection of the 843 Pump Station to the pump connectors of the Sample Processors |  |
| 2 pcs | 6.2148.050 USB/RS-232 Converter for 900 Touch Control Extends the 900 Touch Control by an RS-232 interface for the connection of e.g. balance. |  |

1 pcs **6.2743.050** **Sample tubes 11 mL**
2000 pieces. For IC Sample Processors and VA Autosampler



1 pcs **6.2743.070** **Stopper with perforation**
2000 pieces. For IC Sample Processors



1 pcs **6.2744.010** **Pressure screw 5x**
With UNF 10/32 connection. For the connection of PEEK capillaries



3 pcs **6.2744.080** **M6 thread / UNF 10/32 adapter**
With M6 outer thread. For IC instruments.



4 pcs **6.2747.010** **Sample vessel 50 mL**
With blue screw cap and mL graduation. Set of 25 pieces.



-
- 1 pcs** **6.2833.020** **Needle holder 1/8 in. With tubing connection M6**
For Sample Processors. For the connection of FEP tubing with M6 connectors



-
- 1 pcs** **6.3032.210** **Dosing Unit 10 mL**
Dosing unit with integrated data chip with 10 mL glass cylinder and light protection, mountable on reagent bottle with ISO/DIN GL45 thread. FEP tubing connection, anti-diffusion buret tip.



-
- 1 pcs** **6.5339.030** **VA electrode equipment with Multi-Mode Electrode pro for Professional VA instruments**
Complete electrode set for polarographic and voltammetric determinations. Includes Multi-Mode Electrode pro, reference electrode, platinum auxiliary electrode, measuring vessel, stirrer, electrolyte solution and additional accessories for setting up and operating the Multi-Mode Electrode.



-
- 1 pcs** **6.6059.322** **MagIC Net 3.2 Professional CD: 1 license**

Professional PC program for controlling all of the intelligent Professional IC systems, Compact IC instruments and their peripherals, such as various Autosamplers, 800 Dosinos, 771 Compact Interface, etc. The software permits the inspection, data acquisition, data evaluation, data monitoring and report generation of ion chromatographic analyses.

Graphical user interface for routine operations, extensive database programs, method development, configuration and manual system control; very flexible user administration, efficient database operations, extensive data export functions, individually configurable report generator, control and monitoring of all system components and the chromatography results.

MagIC Net Professional complies fully with FDA Regulation 21 CFR Part 11 as well as GLP.

MagIC Net is available in 16 dialog languages.

1 license.

