





Accessories for 2.815.0030

Below, the accessories are grouped into Scope of delivery and Optional accessories.
Please keep this printout at hand for ordering replacement material.
These lists may be subject to change.

Scope of delivery 2.815.0030

Qty.	Order no.	Description	
1 pcs	1.815.0030	815 Robotic USB Sample Processor XL (1T/0P)	
		<p>Robotic USB Sample Processor XL with one workstation for the automatic processing of routine samples in series with large quantities and for complex sample preparation or parallel runs. Up to two pumps (membrane or peristaltic) and three dosing devices for Liquid Handling tasks can be connected.</p> <p>Because of the multitude of application variants, rack, stirrer, titration head, robotic arm, Swing Head and sample vessels must be tailored to the application and ordered separately.</p>	
2 pcs	6.1236.020	Sleeve with SGJ 14/12 mm	
		Sleeve with SGJ 14/12 mm and O-ring.	
1 pcs	6.1805.110	FEP tubing / M6 / 80 cm	
		With light and kink protection	
1 pcs	6.2151.000	Cable USB A – mini-DIN 8-pin	
		Controller cable	

1 pcs **6.2621.030** **Hexagon key 4 mm**



1 pcs **6.2621.070** **5 mm hex key for IC Sample Processors**



1 pcs **6.2621.140** **Hexagon key 2.5 mm**



3 pcs **6.2709.070** **Guiding sleeve**
For fixation of buret and dosing tips in titration heads and electrode holders



1 pcs **6.2751.100** **Safety shield**

Safety shield for Sample Processors with 786 Swing Head



Optional accessories

Order no.	Description
-----------	-------------

2.772.0120	772 Pump Unit – aspirate
-------------------	---------------------------------

Peristaltic pump for direct connection to Sample Processors. The "Aspiration" version contains extensive accessories for the aspiration of titrated-out solutions.



2.772.0130	772 Pump Unit – rinse
-------------------	------------------------------

Peristaltic pump for direct connection to Sample Processors. The "Rinse" version contains extensive accessories for rinsing.



2.786.0010	786 Swing Head with transfer head left
-------------------	---

Additional equipment for Robotic Sample Processors XL for transferring / pipetting from small sample vessels into larger titration vessels on the rack or into an external titration cell; this can be located to the left of the work station.



2.786.0020 786 Swing Head with transfer head right

Additional equipment for Robotic Sample Processors XL for transferring / pipetting from small sample vessels into larger titration vessels on the rack or into an external titration cell; this can be located to the right of the work station.



2.786.0030 786 Swing Head with titration swing arm, left- or right-swinging

Additional equipment for Robotic Sample Processors XL for direct titration in sample vessels of 75 mL and more.



2.786.0040 786 Swing Head

Additional equipment for Robotic Sample Processors XL without titration or transfer heads.



2.801.0010 801 Stirrer

Magnetic stirrer without stand for supplementing the Titrino plus, Dosimat plus, Titrandos, Sample Processors, 805 Dosimats and 780/781 pH Meters. With permanently attached cable for MSB (Metrohm Serial Bus).



2.802.0020 802 Stirrer

Rod stirrer for sample changer and Sample Processor.

With 6.1909.020 Propeller stirrer 104 mm and fixed cable.



2.802.0040 802 Stirrer (propeller stirrer) for 804 Ti Stand

Rod stirrer with 6.1909.010 Propeller stirrer.



2.804.0040 804 Ti Stand with stand

Titration stand and controller for 802 Rod Stirrer. The 804 Ti Stand together with the optional 802 Rod Stirrer provides an alternative to the magnetic stirrer. Ti Stand with base plate, support rod and electrode holder.



2.823.0020 823 Membrane Pump Unit «aspirate»

Membrane pump for direct connection to Sample Processors. The «Aspiration» version contains numerous accessories for aspirating off solutions.



2.823.0030 823 Membrane Pump Unit «rinse»

Membrane pump for direct connection to Sample Processors. The «Rinsing» version contains numerous rinsing accessories.



2.843.0050 843 Pump Station (membrane) - rinse/aspirate for Sample Processors

The 843 Pump Station (membrane) has two built-in membrane pumps. These can be controlled directly from the Sample Processor via pump commands. The Rinse / Aspirate version is provided with all the accessories needed for automatically emptying the titration beaker and rinsing the titration equipment. The accessories are intended for use with the 814 and 815 Sample Processors.



2.843.0150 843 Pump Station (peristaltic) - rinse/aspirate for Sample Processors

The 843 Pump Station (peristaltic) has two built-in peristaltic pumps. These can be controlled directly from the Sample Processors via pump commands. The rinse/aspirate version is provided with all the accessories needed for automatically emptying the titration beaker and rinsing the titration equipment. The accessories are intended for use with the 814 and 815 Sample Processors.



2.849.0010 849 Level Control

Additional equipment for Sample Processors for monitoring the filling level of rinsing or waste canisters via Remote. Prevents pumps from running dry and/or canisters from overflowing and is suitable for use with aqueous solutions, solvents and suspensions.



6.1458.010 Titration head, 6 x SGJ 14 and 3 x SGJ 9 openings

With 6xSGJ 14 and 3x SGJ 9 apertures.



6.1458.020 Titration head /4 x M10 connectors

With 4 M10 screw nipples, including stoppers.



6.1458.030 KF titration head /4 x M10 connectors

With 4 M10 screw nipples, including stoppers.



6.1458.040 Titration Head, 3 x SGJ 14

Titration head for 120 mL beakers. With 3 openings SGJ 14 and 4 openings 6.4 mm, 2 dosing tips included. Suitable for rinsing and aspiration equipment.



6.1458.070 Titration head / 2 x SGJ 14

Titration head for 75 mL beakers. With 2 openings SGJ 14, 2 openings 6.4 mm, 1 opening M10 and 3 pre-mounted dosing tips. Suitable for rinsing and aspiration equipment.



6.1462.030 Robotic arm with transfer head for 786 Swing Head, left swinging

Transfer robotic arm for liquid handling purposes



6.1462.040 Robotic arm with transfer head for 786 Swing Head, right swinging

Transfer robotic arm for liquid handling purposes



6.1462.050 Robotic arm with titration head for 786 Swing Head, left or right swinging

Titration head for Swing Head



6.1462.060 Robotic arm with holder for titration head, left swinging

Titration head holder to 786 Swing Head



6.1462.070 Robotic arm with holder for titration head, right swinging

Titration head holder to 786 Swing Head



6.1462.090 Robotic arm with Luer-Lock adapter for 786 Swing Head, right swinging

Transfer robotic arm for liquid handling



6.1462.150 Robotic arm with titration head and beaker sensor for 786 Swing Head, left or right-swinging

Titration head with beaker sensor for 786 Swing Head, 2 x M10, 1 x SGJ 14.5, 2 x buret tip



6.1462.160 Robotic arm with holder for titration head and sensor for 786 Swing Head, left swinging

Titration head holder with beaker sensor for 786 Swing Head



6.1462.170 Robotic arm with holder for titration head and sensor for 786 Swing Head, right swinging

Titration head holder with beaker sensor for 786 Swing Head



6.1462.260 Robotic arm with holder for titration head, left swinging, external

Titration head holder for 786 Swing Head with possibility of swinging to external positions



6.2001.070 Support stand for Sample Processors

Support stand for Sample Processors, for external titrations and dilutions (IC)



6.2041.350 Sample rack 48 x 75 mL

Sample rack for 48 x 75 mL samples, two-row



6.2041.400 Sample rack 126 x 11 mL

Sample rack for 126 x 11 mL samples, multi-row



6.2041.410 Sample rack 141 x 11 mL

Sample rack for 141 x 11 mL samples, multi-row.



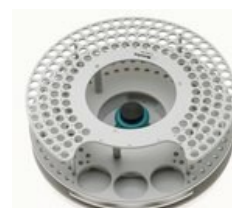
6.2041.430 Sample rack 127 x 11 mL

Sample rack for 127 x 11 mL samples with 2 rinsing beakers.



6.2041.440 Sample rack 148 x 11 mL + 3 x 300 mL

Sample rack for 148 x 11 mL samples with 3 rinsing beakers.



6.2041.450 Sample rack 56 x 11 mL + 56 x 50 mL

Multi-row sample rack for 56 samples in 11 mL sample vessels (6.2743.050) and 56 samples in sample vessels of 50 mL (6.2747.010).



6.2041.710 Sample rack 160 x 6 mL

Sample rack 160 x 6 mL vials



6.2041.800 Sample rack 100 x 75 mL

Sample rack for 100 x 75 mL samples, multi-row



6.2041.810 Sample rack 34 x 150 mL

Sample rack for 34 x 150 mL samples, multi-row



6.2041.820 Sample rack 28 x 250 mL

Sample rack for 28 x 250 mL samples (6.1432.320), multi-row



6.2041.830 Sample rack 28 x 200 mL

Sample rack for 28 x 200 mL samples (6.1459.310), multi-row



6.2041.840 Sample rack 59 x 120 mL

Sample rack for 59x120 mL samples (6.1459.300), multi-row



6.2041.850 Sample rack 59 x 120 mL, PP

Sample rack for 59x120 mL samples (6.1459.300), multi-row



6.2041.900 Sample rack insert 54 x 75 mL for water bath

Insert for waterbath rack 54 x 75 mL



6.2058.020 Head extension 30 mm for Sample Processors

Head extension 30 mm for 789, 815 Sample Processors.



6.2058.030 Head extension 10 mm for Sample Processors

Head extension for use with the waterbath rack.



6.2058.110 Tower extension for Sample Processors

Height extension 130 mm for Sample Processors. Tower extension for COD applications.



6.2141.300 Remote cable 843 Pump Station to Sample Processor

Remote cable for the direct connection of the 843 Pump Station to the pump connectors of the Sample Processors



6.2148.010 Remote Box MSB

Additional remote interface for the connection of devices that can be controlled via remote lines. With permanently attached cable.



6.2711.070 Drip pan for 789/815/855

Drip pan for 789, 815, 855 Robotic Sample Processors XL



6.2840.000 Water bath for Robotic Sample Processors and Robotic Titrosampler

Water bath rack for Robotic Sample Processors and Titrosampler.



6.2841.000 External Polytron rinsing station for Robotic Sample Processors

The external rinsing station can be fitted on the side next to the Robotic Sample Processor tower, making it possible for external cleaning of the Polytron to be carried out during additional actions on the sample rack.



6.2841.010 External rinsing station for robotic arm with 6.1458.040 titration head

The external rinsing station can be fitted on the side next to the Robotic Sample Processor tower, making it possible for external cleaning of the titration equipment to be carried out during additional actions on the sample rack.



6.5619.000 Transfer equipment, 0.5 - 2 mL, for 789/815

Complete equipment for the transfer of solutions from 0.5 to 2.0 mL on the Robotic Sample Processor.



6.6056.231 tiamo™ 2.3 Light CD: 1 license

tiamo™ 2.3 Light computer program for controlling a titration system.

- Up to two instruments can be connected
- Graphical method editor with numerous templates
- Layout manager for individual monitor interface
- Professional database with reevaluation
- High-performance report generator
- No parallel titration, no data export
- Dialog languages: German, English, French, Italian, Spanish, Portuguese, Polish, Russian, Slovakian, Japanese, Chinese, Traditional Chinese



6.6056.232 tiamo™ 2.3 Full CD: 1 license

Computer program for controlling complex titration systems.

- Graphical method editor with numerous templates
- Layout manager for individual screen surface
- Professional database with reevaluation
- Export to LIMS, NuGenesis, Cyberlab, etc.
- High-performance Report Generator
- In compliance with the directives according to FDA 21 CFR Part 11
- Parallel titration
- Dialog languages: German, English, French, Italian, Spanish, Portuguese, Polish, Russian, Slovakian, Japanese, Chinese and Traditional Chinese



6.6056.233 tiamo™ 2.3 Multi CD: 3 licenses

Client/server-compatible computer program for controlling complex titration systems.

- Graphical method editor with numerous templates
 - Layout manager for individual monitor interface
 - Client/server database
 - Professional database with reevaluation
 - Export to LIMS, NuGenesis, Cyberlab, etc.
 - High-performance report generator
 - In compliance with the directives according to FDA 21 CFR Part 11
 - Parallel titration
 - Dialog languages: German, English, French, Italian, Spanish, Portuguese, Polish, Russian, Slovakian, Japanese, Chinese and Traditional Chinese
-