




Accessories for TitrIC pro I

Below, the accessories are grouped into Scope of delivery and Optional accessories.
Please keep this printout at hand for ordering replacement material.
These lists may be subject to change.

Scope of delivery TitrIC pro I

Qty.	Order no.	Description	
1 pcs	2.786.0040	786 Swing Head Additional equipment for Robotic Sample Processors XL without titration or transfer heads.	
4 pcs	2.800.0010	800 Dosino Drive with write/read hardware for intelligent Dosing Units. With fixed cable (length 150 cm).	
1 pcs	2.802.0020	802 Stirrer Rod stirrer for sample changer and Sample Processor. With 6.1909.020 Propeller stirrer 104 mm and fixed cable.	

1 pcs 2.815.0020 815 Robotic USB Sample Processor XL (1T/2P)

Robotic USB Sample Processor XL with one workstation and two built-in membrane pumps for the automatic processing of routine samples in series with large quantities and for complex sample preparation or parallel runs. Up to three dosing devices for Liquid Handling tasks can be connected.

Because of the multitude of application variants, rack, stirrer, titration head, robotic arm, Swing Head and sample vessels must be tailored to the application and ordered separately.



1 pcs 2.850.9010 IC Conductivity Detector

Compact and intelligent high performance conductivity detector for intelligent IC instruments. Outstanding temperature stability, the complete signal processing within the protected detector block and the latest generation of DSP – Digital Signal Processing – guarantee the highest precision of the measurement. No change of measuring ranges (not even automatic ones) is required, due to the dynamic working range.



1 pcs 2.856.0010 856 Conductivity Module

Conductivity measuring module as supplement to an existing Titrand system or "stand-alone" in combination with a 900 Touch Control. With the 856 Conductivity Module, not only conductivity and temperature can be determined, but also TDS and salinity. It supports state-of-the-art conductivity measuring cells, i.e. 5-ring measuring cells.

The Conductivity Module is equipped with two USB interfaces for connecting printers, barcode readers or sample changers and four MSB interfaces for stirrers or Dosinos. Both in conjunction with the 900 Touch Control as stand-alone instrument and also integrated in **tiamo™** full (from 2.0), it is in compliance with GLP and FDA 21 CFR part 11 requirements.



1 pcs 2.881.0030 881 Compact IC pro – Anion – MCS

The 881 Compact IC pro – Anion – MCS is an intelligent ion chromatograph of compact design with column oven for the determination of anions or polar substances with sequential suppression. It can be operated with various types of detection.



1 pcs 2.905.0010 905 Titrand

High-end titrator for potentiometric titration with one measuring interface for use with Dosino dosing systems.

- up to four dosing systems of the 800 Dosino type
- dynamic (DET), monotonic (MET) and endpoint titration (SET)
- Measurement with ion-selective electrodes (MEAS CONC)
- Dosing functions with monitoring, Liquid Handling
- four MSB connectors for additional stirrers or dosing systems
- "iTrode" intelligent electrodes
- USB connector
- For use with *tiamo* PC software or Touch Control unit
- Compliance with GMP/GLP and FDA regulations such as 21 CFR Part 11, if required



1 pcs 6.0277.300 iAquatrode plus with Pt1000

Intelligent, combined pH electrode with integrated memory chip for storing sensor data and with Pt1000 temperature sensor for pH measurements/titrations in ion-deficient aqueous media (e.g., drinking water, process water). This electrode shows a very short response time in these samples.

The fixed ground-joint diaphragm is insensitive to contamination.
When $c(\text{KCl}) = 3 \text{ mol/L}$ is used as bridge electrolyte, storage in storage solution is recommended.
The bridge electrolyte can be easily replaced with a chloride-free electrolyte (e.g., potassium nitrate $c(\text{KNO}_3) = 1 \text{ mol/L}$ (6.2310.010)). Storage in the used bridge electrolyte.
iTrodes can be connected to Titrand, Ti-Touch, or 913/914 meters.



1 pcs 6.0510.100 combined polymer membrane electrode, Ca

Combined calcium-selective electrode with polymer membrane.
This ISE is suitable for:

- ion measurements of Ca^{2+} ($5 \cdot 10^{-7}$ to 1 mol/L) in aqueous solutions
- complexometric (back) titrations (e.g., determination of water hardness)

Thanks to a robust/break-proof plastic shaft made of propylene and an impact protection for the polymer membrane, this sensor is mechanically very resistant.
The reference electrolyte used is $c(\text{NH}_4\text{NO}_3) = 1 \text{ mol/L}$.



1 pcs 6.0915.100 5-ring conductivity measuring cell $c = 0.7 \text{ cm}^{-1}$ with Pt1000 (fixed cable)

5-ring conductivity measuring cell with cell constant $c = 0.7 \text{ cm}^{-1}$, with integrated Pt1000 temperature sensor and with fixed cable (1.2 m) for connecting to an 856 Conductivity Module.
This sensor is suitable for measurements of medium conductivities (5 uS/cm to 20 mS/cm), e.g., in:

- drinking water
- surface water
- wastewater



1 pcs 6.1414.060 Micro titration vessel lid ECO


1 pcs **6.1415.250** **Titration vessel / 50-150 mL**



1 pcs **6.1462.040** **Robotic arm with transfer head for 786 Swing Head, right swinging**
Transfer robotic arm for liquid handling purposes



1 pcs **6.1543.170** **Aspiration tip / M8 thread**

Aspiration tip for the Sample Processors.



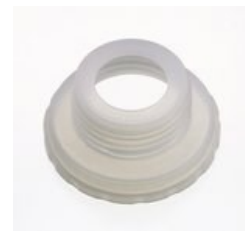
1 pcs **6.1543.210** **3-way stopper with antidiffusion valve**
Stopper with three buret tips for connecting 3 x M6 tubing



3 pcs **6.1608.030** **Round glass bottle / 1000 mL / GL 45**



1 pcs **6.1618.020** **Thread adapter S 40 to GL 45**
Adapter for bottles with S40 thread (Merck...) to GL45.



1 pcs **6.1805.030** **FEP tubing / M6 / 150 cm**
With light and kink protection



3 pcs **6.1805.060** **FEP tubing / M6 / 60 cm**
With light and kink protection



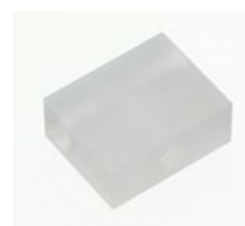
2 pcs **6.1805.110** **FEP tubing / M6 / 80 cm**
With light and kink protection



1 pcs **6.1808.010** **Coupling piece 2 X M6**
2 M6 outer threads. Part of the screw connections for Exchange Units and 676 Sample Changer



1 pcs **6.1808.060** **T connector / M6 inner**
3 M6 inner threads.



1 pcs **6.1808.280** **Adapter Dosino port 4, M6 inner**
Adapter for use with Dosino port 4 in IC. For connecting to M6 connector.



1 pcs **6.1835.050** **PEEK sample tube**
For sample changers for transferring larger-sized sample volumes, e.g. for brightener determination.



1 pcs **6.2001.070** **Support stand for Sample Processors**
Support stand for Sample Processors, for external titrations and dilutions (IC)



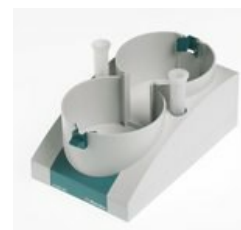
1 pcs 6.2057.210 Holder for Dosino to IC instruments

Mounting part for Dosinos at the IC instrument housing.



1 pcs 6.2061.010 Bottle holder for Dosinos

Bottle holder for up to two Dosinos, mounted on 1 L reagent bottles.



1 pcs 6.2104.020 Electrode cable / 1 m / F

For connecting electrodes with Metrohm plug-in head G to Metrohm instruments (socket F).



1 pcs 6.2134.040 RS-232 DB9 - IBM-PC(DB9) connecting cable

For the Metrohm RS-232 interface - PC connection. For Titrinos, Titrino plus and 756, 831 KF Coulometer, RS-232/USB Box



2 pcs 6.2148.050 USB/RS-232 Converter for 900 Touch Control

Extends the 900 Touch Control by an RS-232 interface for the connection of e.g. balance.



2 pcs 6.2151.000 Cable USB A – mini-DIN 8-pin

Controller cable



1 pcs 6.2307.230 Buffer solutions pH 4, 7 and 9

Mixed buffer solutions pH 4.00/7.00/9.00 (25 °C) in single use sachets, colourless, box of 3 x 10 x 30 mL



1 pcs 6.2325.000 pHit kit

Maintenance kit for pH electrodes

The kit contains:

- 50 mL cleaning solution
- 50 mL 3M KCl solution
- 50 mL storage solution
- 2 Storage vessels
- Instructions for use



1 pcs 6.2327.000 Electrolyte NH₄NO₃ 1 mol (50 mL)

Electrolyte solution $c(\text{NH}_4\text{NO}_3) = 1 \text{ mol/L}$ (for combined Ca-ISE 6.0510.100)



1 pcs 6.2629.000 Screw nut to needle holder IC

On Sample Processors



1 pcs 6.2709.090 Stopper

PTFE. Used with 6.5613.000 ECO titration equipment



1 pcs 6.2730.020 Septum stopper

With E.301.0041 O-ring. For 6.1448.010 Septum and 6.1414.030 Titration vessel lid. Used for KF applications.



5 pcs 6.2730.030 Stopper

Complete with nipple and O-ring. For 6.1414.030 titration vessel lids. For KF instruments, VA measurement stands, VA Computrace and IC Dilution.



3 pcs 6.2730.060 Screw nipple

PCTFE. With M16 thread. Used with 6.5613.000 ECO titration equipment



1 pcs 6.2730.080 Screw nipple

PCTFE. Used with 6.5613.000 ECO titration equipment with 722 Stirrer



1 pcs 6.2744.070 Pressure screw short

Short version. With UNF 10/32 connection. 5 pieces. For the connection of PEEK capillaries



2 pcs 6.2744.080 M6 thread / UNF 10/32 adapter

With M6 outer thread. For IC instruments.



1 pcs 6.2763.000 Flow-through cell for the 6.0915.100/6.0920.100

Flow-through cell for the 6.0915.100/6.0920.100 5-ring conductivity measuring cell



1 pcs 6.2833.020 Needle holder 1/8 in. With tubing connection M6

For Sample Processors. For the connection of FEP tubing with M6 connectors



1 pcs 6.3032.210 Dosing Unit 10 mL

Dosing unit with integrated data chip with 10 mL glass cylinder and light protection, mountable on reagent bottle with ISO/DIN GL45 thread. FEP tubing connection, anti-diffusion buret tip.



2 pcs 6.3032.220 Dosing Unit 20 mL

Dosing unit with integrated data chip with 20 mL glass cylinder and light protection, mountable on reagent bottle with ISO/DIN GL45 thread. FEP tubing connection, anti-diffusion buret tip.



1 pcs 6.3032.250 Dosing Unit 50 mL

Dosing unit with integrated data chip with 50 mL glass cylinder and light protection, mountable on reagent bottle with ISO/DIN GL45 thread. FEP tubing connection, anti-diffusion buret tip.



1 pcs 6.6056.231 tiamo™ 2.3 Light CD: 1 license

tiamo™ 2.3 Light computer program for controlling a titration system.

- Up to two instruments can be connected
- Graphical method editor with numerous templates
- Layout manager for individual monitor interface
- Professional database with reevaluation
- High-performance report generator
- No parallel titration, no data export
- Dialog languages: German, English, French, Italian, Spanish, Portuguese, Polish, Russian, Slovakian, Japanese, Chinese, Traditional Chinese

