

## Accessories for 2.810.0010

Below, the accessories are grouped into Scope of delivery and Optional accessories.  
Please keep this printout at hand for ordering replacement material.  
These lists may be subject to change.

### Scope of delivery 2.810.0010

Qty.	Order no.	Description	
1 pcs	1.810.0010	<b>810 Sample Processor</b>	
		<p>Sample Processor for the automated analysis of routine samples using 916 Ti-Touch or 915 KF Ti-Touch.</p> <p>Sample Processor with one workstation and one built-in membrane pump for the automatic processing of potentiometric as well as Karl Fischer titrations, in series with small to medium quantities. In addition to the built-in pump, an additional one (membrane or peristaltic) and up to three dosing devices for Liquid Handling tasks can be connected.</p> <p>Because of the multitude of application variants, rack, stirrer, titration head, Swing Head and sample vessels must be tailored to the application and ordered separately</p>	
2 pcs	6.1236.020	<b>Sleeve with SGJ 14/12 mm</b>	
		Sleeve with SGJ 14/12 mm and O-ring.	
5 pcs	6.1446.000	<b>SGJ stopper / B-14/(15)</b>	
3 pcs	6.1446.010	<b>Stopper</b>	
		Used with Sample Changers	

---

**1 pcs**     **6.1621.000**     **Container 10 L**  
As rinsing or waste container in automated systems.



---

**1 pcs**     **6.1805.110**     **FEP tubing / M6 / 80 cm**  
With light and kink protection



---

**3 pcs**     **6.1805.420**     **FEP tubing / M6 / 48 cm**  
With light and kink protection



---

**1 pcs**     **6.1812.000**     **PTFE tubing 4 mm / 6 mm / 4 m**








---

**1 pcs**     **6.1828.000**     **PVDF connection nipple**

For 6.1621.000 canister.



---

<b>1 pcs</b>	<b>6.2053.000</b>	<b>Cable clip</b> Cable clip for fastening cables and tubes	
<b>1 pcs</b>	<b>6.2151.000</b>	<b>Cable USB A – mini-DIN 8-pin</b> Controller cable	
<b>1 pcs</b>	<b>6.2621.030</b>	<b>Hexagon key 4 mm</b>	
<b>1 pcs</b>	<b>6.2621.070</b>	<b>5 mm hex key for IC Sample Processors</b>	
<b>1 pcs</b>	<b>6.2621.140</b>	<b>Hexagon key 2.5 mm</b>	

---

---

**3 pcs**      **6.2709.070**      **Guiding sleeve**  
For fixation of buret and dosing tips in titration heads and electrode holders



---

**3 pcs**      **6.2740.020**      **Spray nozzle**  
For the fine-spraying of the rinsing solution.



---

**1 pcs**      **6.2751.080**      **Safety shield**  
Safety shield for single-tower Sample Processors without 786 Swing Head.



## Optional accessories

Order no.	Description	
<b>2.741.0010</b>	<b>741 Magnetic Stirrer</b>	
	Magnetic stirrer for sample changers. The magnetic stirrer is located beneath the sample rack.	
<b>2.772.0120</b>	<b>772 Pump Unit – aspirate</b>	
	Peristaltic pump for direct connection to Sample Processors. The "Aspiration" version contains extensive accessories for the aspiration of titered-out solutions.	
<b>2.802.0020</b>	<b>802 Stirrer</b>	
	Rod stirrer for sample changer and Sample Processor. With 6.1909.020 Propeller stirrer 104 mm and fixed cable.	
<b>2.823.0020</b>	<b>823 Membrane Pump Unit «aspirate»</b>	
	Membrane pump for direct connection to Sample Processors. The «Aspiration» version contains numerous accessories for aspirating off solutions.	

---

**2.849.0010      849 Level Control**

Additional equipment for Sample Processors for monitoring the filling level of rinsing or waste canisters via Remote. Prevents pumps from running dry and/or canisters from overflowing and is suitable for use with aqueous solutions, solvents and suspensions.



---

**6.1458.010      Titration head, 6 x SGJ 14 and 3 x SGJ 9 openings**

With 6xSGJ 14 and 3x SGJ 9 apertures.



---

**6.1458.020      Titration head /4 x M10 connectors**

With 4 M10 screw nipples, including stoppers.



---

**6.1458.030      KF titration head /4 x M10 connectors**

With 4 M10 screw nipples, including stoppers.



---

**6.1458.040      Titration Head, 3 x SGJ 14**

Titration head for 120 mL beakers. With 3 openings SGJ 14 and 4 openings 6.4 mm, 2 dosing tips included. Suitable for rinsing and aspiration equipment.



---

**6.1458.070      Titration head / 2 x SGJ 14**

Titration head for 75 mL beakers. With 2 openings SGJ 14, 2 openings 6.4 mm, 1 opening M10 and 3 pre-mounted dosing tips. Suitable for rinsing and aspiration equipment.



---

**6.2041.310      Sample rack 12 x 250 mL**

Sample rack for 12 x 250 mL, one row



---

**6.2041.320      Sample rack 16 x 150 mL**

Sample rack for 16 x 150 mL samples, one-row



---

**6.2041.340      Sample rack 24 x 75 mL**

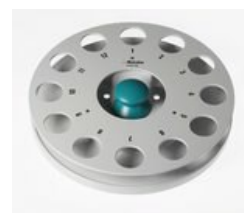
Sample rack for 24 x 75 mL samples, one-row.



---

**6.2041.360      Sample rack for 12 x 150 mL**

Sample rack for 12 x 150 mL samples, one-row



---

**6.2041.370      Sample rack 14 x 200 mL**

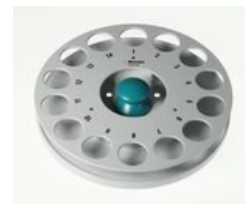
Sample rack for 14 x 200 mL samples, one-row



---

**6.2041.380      Sample rack 14 x 235 mL**

Sample rack for 14 x 235 mL samples, one-row



---

**6.2041.390      Sample rack 16 x 120 mL**

Sample rack for 16 x 120 mL samples, one-row



---

**6.2041.460      Sample rack 21 x 100 mL (COD)**

Sample rack 21 x 100 mL for the determination of COD



---

**6.2041.470      Sample rack 22 x 120 mL**

Sample rack for 22 x 120 mL samples (6.1459.300), single-row.



---

**6.2058.110      Tower extension for Sample Processors**

Height extension 130 mm for Sample Processors. Tower extension for COD applications.



---

**6.2141.300      Remote cable 843 Pump Station to Sample Processor**

Remote cable for the direct connection of the 843 Pump Station to the pump connectors of the Sample Processors



---

**6.2148.010      Remote Box MSB**

Additional remote interface for the connection of devices that can be controlled via remote lines. With permanently attached cable.





---

**6.2711.060      Drip pan for 778/810/814/838/858 Sample Processors**

Drip pan for 778, 810, 814, 838, 858 Sample Processors

