




## Accessories for TitrIC Vario pro III

Below, the accessories are grouped into Scope of delivery and Optional accessories.  
Please keep this printout at hand for ordering replacement material.  
These lists may be subject to change.

### Scope of delivery TitrIC Vario pro III

Qty.	Order no.	Description	
2 pcs	2.786.0040	<b>786 Swing Head</b> Additional equipment for Robotic Sample Processors XL without titration or transfer heads.	
2 pcs	2.800.0010	<b>800 Dosino</b> Drive with write/read hardware for intelligent Dosing Units. With fixed cable (length 150 cm).	
1 pcs	2.802.0010	<b>802 Rod Stirrer for 727 Ti Stand</b> Rod stirrer with separate 6.2137.000 Speed controller and 6.1909.010 Propeller stirrer.	

---

**1 pcs    2.815.0110    815 Robotic USB Sample Processor XL (2T/2P)**

Robotic USB Sample Processor XL with two workstations and two built-in membrane pumps for the automatic processing of routine samples in series with large quantities and for complex sample preparation or parallel runs. In addition to the built-in pumps, up to two additional pumps (membrane or peristaltic) and three dosing devices for Liquid Handling tasks can be connected.

Because of the multitude of application variants, rack, stirrer, titration head, robotic arm, Swing Head and sample vessels must be tailored to the application and ordered separately.




---

**2 pcs    2.850.9010    IC Conductivity Detector**

Compact and intelligent high performance conductivity detector for intelligent IC instruments. Outstanding temperature stability, the complete signal processing within the protected detector block and the latest generation of DSP – Digital Signal Processing – guarantee the highest precision of the measurement. No change of measuring ranges (not even automatic ones) is required, due to the dynamic working range.




---

**1 pcs    2.854.0010    854 iConnect**

854 iConnect - electrode cable and measuring amplifier for intelligent electrodes «iTrodes».




---

**1 pcs    2.856.0010    856 Conductivity Module**

Conductivity measuring module as supplement to an existing Titrand system or "stand-alone" in combination with a 900 Touch Control. With the 856 Conductivity Module, not only conductivity and temperature can be determined, but also TDS and salinity. It supports state-of-the-art conductivity measuring cells, i.e. 5-ring measuring cells.

The Conductivity Module is equipped with two USB interfaces for connecting printers, barcode readers or sample changers and four MSB interfaces for stirrers or Dosinos. Both in conjunction with the 900 Touch Control as stand-alone instrument and also integrated in **tiamo™** full (from 2.0), it is in compliance with GLP and FDA 21 CFR part 11 requirements.




---

**1 pcs    2.905.0010    905 Titrand**

High-end titrator for potentiometric titration with one measuring interface for use with Dosino dosing systems.

- up to four dosing systems of the 800 Dosino type
- dynamic (DET), monotonic (MET) and endpoint titration (SET)
- Measurement with ion-selective electrodes (MEAS CONC)
- Dosing functions with monitoring, Liquid Handling
- four MSB connectors for additional stirrers or dosing systems
- "iTrode" intelligent electrodes
- USB connector
- For use with **tiamo** PC software or Touch Control unit
- Compliance with GMP/GLP and FDA regulations such as 21 CFR Part 11, if required



---

**1 pcs    2.940.2500    940 Professional IC Vario TWO/SeS/PP**

The 940 Professional IC Vario TWO/SeS/PP is the intelligent **two-channel** IC instrument with **sequential suppression** (one channel) and a **peristaltic pump** for suppressor regeneration. The instrument can be used with any separation and detection methods.

Typical areas of application:

- Standard instrument for parallel anion and cation determinations
- Trace analysis for anions and cations
- Online monitoring for anions and cations




---

**1 pcs    6.0277.300    iAquatrode plus with Pt1000**

Intelligent, combined pH electrode with integrated memory chip for storing sensor data and with Pt1000 temperature sensor for pH measurements/titrations in ion-deficient aqueous media (e.g., drinking water, process water). This electrode shows a very short response time in these samples.

The fixed ground-joint diaphragm is insensitive to contamination. When  $c(\text{KCl}) = 3 \text{ mol/L}$  is used as bridge electrolyte, storage in storage solution is recommended. The bridge electrolyte can be easily replaced with a chloride-free electrolyte (e.g., potassium nitrate  $c(\text{KNO}_3) = 1 \text{ mol/L}$  (6.2310.010)). Storage in the used bridge electrolyte. iTrodes can be connected to Titrando, Ti-Touch, or 913/914 meters.




---

**1 pcs    6.0915.100    5-ring conductivity measuring cell  $c = 0.7 \text{ cm}^{-1}$  with Pt1000 (fixed cable)**

5-ring conductivity measuring cell with cell constant  $c = 0.7 \text{ cm}^{-1}$ , with integrated Pt1000 temperature sensor and with fixed cable (1.2 m) for connecting to an 856 Conductivity Module. This sensor is suitable for measurements of medium conductivities (5  $\mu\text{S/cm}$  to 20  $\text{mS/cm}$ ), e.g., in:

- drinking water
- surface water
- wastewater




---

**1 pcs    6.1414.060    Micro titration vessel lid ECO**



---

**1 pcs    6.1415.250    Titration vessel / 50-150 mL**


---

**1 pcs**    **6.1462.040**    **Robotic arm with transfer head for 786 Swing Head, right swinging**  
Transfer robotic arm for liquid handling purposes



---

**1 pcs**    **6.1462.080**    **Robotic DIS-COVER**



---

**1 pcs**    **6.1543.170**    **Aspiration tip / M8 thread**

Aspiration tip for the Sample Processors.



---

**1 pcs**    **6.1543.210**    **3-way stopper with antidiffusion valve**  
Stopper with three buret tips for connecting 3 x M6 tubing



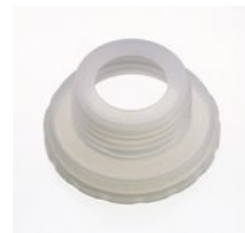
---

**1 pcs**    **6.1608.030**    **Round glass bottle / 1000 mL / GL 45**



---

**1 pcs**    **6.1618.020**    **Thread adapter S 40 to GL 45**  
Adapter for bottles with S40 thread (Merck...) to GL45.



---

**1 pcs**    **6.1805.010**    **FEP tubing / M6 / 13 cm**  
With light and kink protection.



---

**1 pcs**    **6.1805.030**    **FEP tubing / M6 / 150 cm**  
With light and kink protection



---

**1 pcs**    **6.1805.110**    **FEP tubing / M6 / 80 cm**  
With light and kink protection



---

**1 pcs**    **6.1805.510**    **PTFE tubing / M8 / 60 cm**

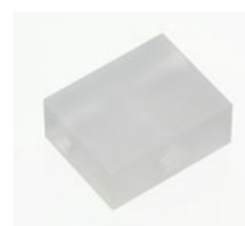
With protection against kinks.



---

**1 pcs**    **6.1808.060**    **T connector / M6 inner**

3 M6 inner threads.



---

**1 pcs**    **6.1808.280**    **Adapter Dosino port 4, M6 inner**

Adapter for use with Dosino port 4 in IC. For connecting to M6 connector.



---

**1 pcs**    **6.1835.030**    **PEEK sample tube**

For the Compact Autosampler.



---

**1 pcs**    **6.2001.070**    **Support stand for Sample Processors**

Support stand for Sample Processors, for external titrations and dilutions (IC)



1 pcs	<b>6.2057.210 Holder for Dosino to IC instruments</b> Mounting part for Dosinos at the IC instrument housing.	
1 pcs	<b>6.2134.040 RS-232 DB9 - IBM-PC(DB9) connecting cable</b> For the Metrohm RS-232 interface - PC connection. For Titrinos, Titrino plus and 756, 831 KF Coulometer, RS-232/USB Box	
1 pcs	<b>6.2148.050 USB/RS-232 Converter for 900 Touch Control</b> Extends the 900 Touch Control by an RS-232 interface for the connection of e.g. balance.	
2 pcs	<b>6.2151.000 Cable USB A – mini-DIN 8-pin</b> Controller cable	
1 pcs	<b>6.2307.230 Buffer solutions pH 4, 7 and 9</b> Mixed buffer solutions pH 4.00/7.00/9.00 (25 °C) in single use sachets, colourless, box of 3 x 10 x 30 mL	
1 pcs	<b>6.2325.000 pHit kit</b> Maintenance kit for pH electrodes The kit contains: <ul style="list-style-type: none"> <li>• 50 mL cleaning solution</li> <li>• 50 mL 3M KCl solution</li> <li>• 50 mL storage solution</li> <li>• 2 Storage vessels</li> <li>• Instructions for use</li> </ul>	
1 pcs	<b>6.2629.000 Screw nut to needle holder IC</b> On Sample Processors	

---

**1 pcs**    **6.2709.090**    **Stopper**  
PTFE. Used with 6.5613.000 ECO titration equipment



---

**1 pcs**    **6.2730.020**    **Septum stopper**  
With E.301.0041 O-ring. For 6.1448.010 Septum and 6.1414.030 Titration vessel lid. Used for KF applications.



---

**5 pcs**    **6.2730.030**    **Stopper**  
Complete with nipple and O-ring. For 6.1414.030 titration vessel lids. For KF instruments, VA measurement stands, VA Computrace and IC Dilution.



---

**3 pcs**    **6.2730.060**    **Screw nipple**  
PCTFE. With M16 thread. Used with 6.5613.000 ECO titration equipment



---

**1 pcs**    **6.2730.080**    **Screw nipple**  
PCTFE. Used with 6.5613.000 ECO titration equipment with 722 Stirrer





---

**1 pcs**     **6.2744.070**     **Pressure screw short**  
Short version. With UNF 10/32 connection. 5 pieces. For the connection of PEEK capillaries



---

**2 pcs**     **6.2744.080**     **M6 thread / UNF 10/32 adapter**  
With M6 outer thread. For IC instruments.



---

**1 pcs**     **6.2763.000**     **Flow-through cell for the 6.0915.100/6.0920.100**  
Flow-through cell for the 6.0915.100/6.0920.100 5-ring conductivity measuring cell



---

**1 pcs**     **6.2832.000**     **MSM Rotor A**  
Suppressor rotor for all IC instruments with MSM (Metrohm Suppressor Module)



---

**1 pcs**     **6.2833.020**     **Needle holder 1/8 in. With tubing connection M6**  
For Sample Processors. For the connection of FEP tubing with M6 connectors



---

**1 pcs    6.2842.020    Adapter sleeve for Suppressor Vario**

The use of the adapter sleeve makes it possible to install both the Standard MSM and the MSM-LC rotor in the MSM-HC housing.



---

**1 pcs    6.3032.220    Dosing Unit 20 mL**

Dosing unit with integrated data chip with 20 mL glass cylinder and light protection, mountable on reagent bottle with ISO/DIN GL45 thread. FEP tubing connection, anti-diffusion buret tip.



---

**1 pcs    6.3032.250    Dosing Unit 50 mL**

Dosing unit with integrated data chip with 50 mL glass cylinder and light protection, mountable on reagent bottle with ISO/DIN GL45 thread. FEP tubing connection, anti-diffusion buret tip.



---






**1 pcs    6.6056.251    Tiamo 2.5 Light CD: 1 license**

**tiamo™** 2.5 Light computer program for controlling a titration system.

- Up to two Metrohm instruments (Titrino, Titrand, etc.) can be connected; balances and other generic (i.e. non-Metrohm) instruments can be included without limitation
- Graphical method editor with numerous templates
- Layout manager for individual monitor interface
- Professional database with reevaluation
- High-performance report generator
- Data export as PDF file, CSV, SLK
- No parallel titration
- No data export in XML format for LIMS
- Dialog languages: German, English, French, Italian, Spanish, Czech, Portuguese, Polish, Russian, Slovakian, Japanese, Chinese, Traditional Chinese



## Optional accessories

Order no.	Description	
<b>6.1432.210</b>	<b>Sample beaker, clear glass, 75 mL, 1 piece</b>	
	Sample beaker, clear glass, 75 mL, suitable for sample racks: 6.2041.340, 6.2041.350, 6.2041.800 and 6.2041.900, 1 piece	
<b>6.1432.320</b>	<b>Sample beaker, clear glass, 250 mL, 1 piece</b>	
	Sample beaker, clear glass, 250 mL, suitable for sample racks: 6.2041.310, 6.2041.400, 6.2041.430, 6.2041.510, 6.2041.820, 6.2068.020 and 6.2068.030, 1 piece	
<b>6.1459.300</b>	<b>Sample beaker, plastic (PP), 120 mL, 250 pieces</b>	
	Sample beaker, plastic (polypropylene, PP), 120 mL, suitable for sample racks: 6.2041.470, 6.2041.840, 6.2041.850, 6.2068.010, 6.2068.020, 6.2068.030, and 6.9920.141, 250 pieces	
<b>6.2041.800</b>	<b>Sample rack 100 x 75 mL</b>	
	Sample rack for 100 x 75 mL samples, multi-row	
<b>6.2041.810</b>	<b>Sample rack 34 x 150 mL</b>	
	Sample rack for 34 x 150 mL samples, multi-row	

---

**6.2041.820            Sample rack 28 x 250 mL**

Sample rack for 28 x 250 mL samples (6.1432.320), multi-row



---

**6.2041.830            Sample rack 28 x 200 mL**

Sample rack for 28 x 200 mL samples (6.1459.310), multi-row



---

**6.2041.840            Sample rack 59 x 120 mL**

Sample rack for 59x120 mL samples (6.1459.300), multi-row



---

**6.5338.100            TitrIC Vario pro equipment for dilution**

TitrIC Vario pro systems accessory kit for dilution.



---

**6.5338.110            TitrIC Vario pro equipment for MiPT**

TitrIC Vario pro systems accessory kit for Partial Loop injections.

