





Accessories for 2.778.0110

Below, the accessories are grouped into Scope of delivery and Optional accessories.
Please keep this printout at hand for ordering replacement material.
These lists may be subject to change.

Scope of delivery 2.778.0110

Qty.	Order no.	Description	
4 pcs	6.1236.020	Sleeve with SGJ 14/12 mm Sleeve with SGJ 14/12 mm and O-ring.	
10 pcs	6.1446.000	SGJ stopper / B-14/(15)	
6 pcs	6.1446.010	Stopper Used with Sample Changers	
2 pcs	6.1621.000	Container 10 L As rinsing or waste container in automated systems.	

2 pcs **6.1805.110** **FEP tubing / M6 / 80 cm**
With light and kink protection



6 pcs **6.1805.420** **FEP tubing / M6 / 48 cm**
With light and kink protection



2 pcs **6.1812.000** **PTFE tubing 4 mm / 6 mm / 4 m**



2 pcs **6.1828.000** **PVDF connection nipple**

For 6.1621.000 canister.



2 pcs **6.2053.000** **Cable clip**
Cable clip for fastening cables and tubes



1 pcs **6.2621.030** **Hexagon key 4 mm**



1 pcs **6.2621.070** **5 mm hex key for IC Sample Processors**



1 pcs **6.2621.140** **Hexagon key 2.5 mm**



6 pcs **6.2709.070** **Guiding sleeve**
For fixation of buret and dosing tips in titration heads and electrode holders

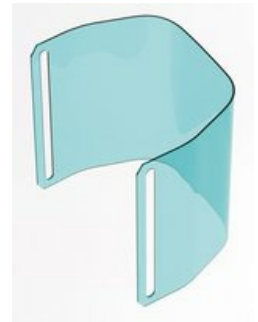


6 pcs **6.2740.020** **Spray nozzle**
For the fine-spraying of the rinsing solution.



1 pcs **6.2751.090** **Safety shield**

Safety shield for dual-tower Sample Processors without 786 Swing Head



Optional accessories

Order no.	Description	
2.741.0010	741 Magnetic Stirrer	
	Magnetic stirrer for sample changers. The magnetic stirrer is located beneath the sample rack.	
2.772.0120	772 Pump Unit – aspirate	
	Peristaltic pump for direct connection to Sample Processors. The "Aspiration" version contains extensive accessories for the aspiration of titrated-out solutions.	
2.802.0020	802 Stirrer	
	Rod stirrer for sample changer and Sample Processor. With 6.1909.020 Propeller stirrer 104 mm and fixed cable.	
2.823.0020	823 Membrane Pump Unit «aspirate»	
	Membrane pump for direct connection to Sample Processors. The «Aspiration» version contains numerous accessories for aspirating off solutions.	
6.1458.010	Titration head, 6 x SGJ 14 and 3 x SGJ 9 openings	
	With 6xSGJ 14 and 3x SGJ 9 apertures.	

6.1458.020 Titration head /4 x M10 connectors

With 4 M10 screw nipples, including stoppers.



6.1458.030 KF titration head /4 x M10 connectors

With 4 M10 screw nipples, including stoppers.



6.1458.040 Titration Head, 3 x SGJ 14

Titration head for 120 mL beakers. With 3 openings SGJ 14 and 4 openings 6.4 mm, 2 dosing tips included.

Suitable for rinsing and aspiration equipment.



6.1458.070 Titration head / 2 x SGJ 14

Titration head for 75 mL beakers. With 2 openings SGJ 14, 2 openings 6.4 mm, and 3 pre-mounted dosing tips.

Suitable for rinsing and aspiration equipment.



6.2041.310 Sample rack 12 x 250 mL

Sample rack for 12 x 250 mL, one row



6.2041.320 Sample rack 16 x 150 mL

Sample rack for 16 x 150 mL samples, one-row



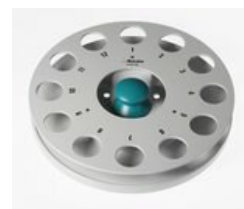
6.2041.340 Sample rack 24 x 75 mL

Sample rack for 24 x 75 mL samples, one-row.



6.2041.360 Sample rack for 12 x 150 mL

Sample rack for 12 x 150 mL samples, one-row



6.2041.370 Sample rack 14 x 200 mL

Sample rack for 14 x 200 mL samples, one-row



6.2041.380 Sample rack 14 x 235 mL

Sample rack for 14 x 235 mL samples, one-row



6.2041.390 Sample rack 16 x 120 mL

Sample rack for 16 x 120 mL samples, one-row



6.2041.460 Sample rack 21 x 100 mL (COD)

Sample rack 21 x 100 mL for the determination of COD



6.2041.470 Sample rack 22 x 120 mL

Sample rack for 22 x 120 mL samples (6.1459.300), single-row.



6.2141.300 Remote cable 843 Pump Station to Sample Processor

Remote cable for the direct connection of the 843 Pump Station to the pump connectors of the Sample Processors



6.2711.060 Drip pan for 778/810/814/838/858 Sample Processors

Drip pan for 778, 810, 814, 838, 858 Sample Processors

