











Accessories for 2.858.0020

Below, the accessories are grouped into Scope of delivery and Optional accessories.
Please keep this printout at hand for ordering replacement material.
These lists may be subject to change.

Scope of delivery 2.858.0020

Qty.	Order no.	Description	
1 pcs	1.858.0020	858 Professional Sample Processor – Pump	
		The 858 Professional Sample Processor – Pump processes samples from 500 µL to 500 mL. The sample transfer takes place either with the installed bidirectional two-channel peristaltic pump or with an 800 Dosino.	
3 pcs	6.1608.080	Bottle / 300 mL	
		Rinsing vessel for IC Sample Processors.	
1 pcs	6.1803.030	PTFE capillary 0.5 mm i.d. / 3 m	
		Capillary for inline dialysis, for Dialysis Unit, IC Dialysis Sample Processor, IC Liquid Handling Dialysis Unit	
2 pcs	6.1826.360	Pump tubing LFL (white/white), 3 stoppers	
		For Sample Processors	

1 pcs	6.1831.060	PEEK capillary 0.5 mm i.d., 1 m	For inline dialysis and for Sample Changers. For IC Dialysis Unit, IC Sample Processor, Compact IC Autosampler, IC Filtration Sample Processor, IC Dialysis Sample Processor, IC Liquid Handling Dialysis Unit	
1 pcs	6.1831.160	PEEK capillary, 0.5 mm ID / 70 cm		
1 pcs	6.2064.000	Beaker retainer for Advanced IC Sample Processor	Retaining plate for 838 Advanced Sample Processors. For holding 2.5 or 11 mL vials.	
1 pcs	6.2151.000	Cable USB A – mini-DIN 8-pin	Controller cable	
1 pcs	6.2621.300	Tool set for Advanced IC Sample Processors	Tool set consisting of open-end wrenches and hexagon keys.	
1 pcs	6.2739.000	Wrench	For tightening connectors	

1 pcs **6.2744.010** **Pressure screw 5x**
With UNF 10/32 connection. For the connection of PEEK capillaries



1 pcs **6.2744.034** **Coupling olive/UNF 10/32, 2x**
Connection between pressure screw and pump tubing. 2 pieces. For IC instruments with peristaltic pump.



1 pcs **6.2744.070** **Pressure screw short**
Short version. With UNF 10/32 connection. 5 pieces. For the connection of PEEK capillaries



2 pcs **6.2744.160** **Nozzle/UNF 10/32 coupling with security device**
Security device for connecting pump tubing to a nozzle.



1 pcs **6.2751.110** **Safety shield**
Safety shield for the Advanced IC/VA Sample Processors.







1 pcs 6.2846.010 Sample needle made of zirconium oxide with PEEK tip

Sample needle for Sample Processors and Autosampler in ion chromatography. The PEEK tip guarantees secure piercing of the vial covering.



Optional accessories

Order no.	Description	
6.1826.310	Pump tubing LFL (orange/green), 3-stopper	
<p>Pump tubing for suppressor solutions and for acceptor solutions for inline dialysis and for inline ultrafiltration.</p>		
6.1826.320	Pump tubing LFL (orange/yellow) , 3-stopper	
<p>For suppressor solutions and for acceptor solutions for inline dialysis and for inline ultrafiltration.</p>		
6.1826.330	Pump tubing LFL (orange/white), 3 stoppers	
<p>For all IC instruments with peristaltic pump.</p>		
6.1826.340	Pump tubing LFL (black/black), 3 stoppers	
<p>For the sample solution in inline dialysis.</p>		

6.1826.380 Pump tubing LFL (gray/gray), 3 stoppers

For Inline Dilution



6.1826.390 Pump tubing LFL (yellow/yellow), 3 stoppers

For the sample solution in Inline Ultrafiltration.



6.2041.310 Sample rack 12 x 250 mL

Sample rack for 12 x 250 mL, one row



6.2041.320 Sample rack 16 x 150 mL

Sample rack for 16 x 150 mL samples, one-row



6.2041.340 Sample rack 24 x 75 mL

Sample rack for 24 x 75 mL samples, one-row.



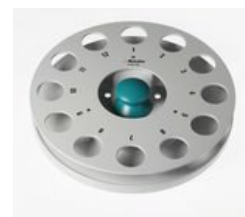
6.2041.350 Sample rack 48 x 75 mL

Sample rack for 48 x 75 mL samples, two-row



6.2041.360 **Sample rack for 12 x 150 mL**

Sample rack for 12 x 150 mL samples, one-row



6.2041.370 **Sample rack 14 x 200 mL**

Sample rack for 14 x 200 mL samples, one-row



6.2041.380 **Sample rack 14 x 235 mL**

Sample rack for 14 x 235 mL samples, one-row



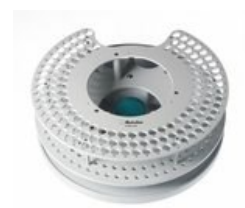
6.2041.410 **Sample rack 141 x 11 mL**

Sample rack for 141 x 11 mL samples, multi-row.



6.2041.430 **Sample rack 127 x 11 mL**

Sample rack for 127 x 11 mL samples with 2 rinsing beakers.



6.2041.440 **Sample rack 148 x 11 mL + 3 x 300 mL**

Sample rack for 148 x 11 mL samples with 3 rinsing beakers.



6.2041.450 **Sample rack 56 x 11 mL + 56 x 50 mL**

Multi-row sample rack for 56 samples in 11 mL sample vessels (6.2743.050) and 56 samples in sample vessels of 50 mL (6.2747.010).



6.2041.750 Sample rack 36 x 11 mL

Sample rack for 36 x 11 mL sample tubes, one-row



6.2041.760 Sample rack 54 x 11 mL + 1 x 300 mL

Sample rack with small diameter for 54 x 11 mL sample vessels in two rows and additionally 1 x 300 mL bottle.



6.2148.010 Remote Box MSB

Additional remote interface for the connection of devices that can be controlled via remote lines. With permanently attached cable.



6.2624.200 Sample needle made of steel, coated

Alternative to the sample needle made of zirconium oxide. Particularly suitable for septum vessels. Metal-free thanks to special coating. Requires the 1/16 in. needle holder (6.2833.010) for installation on the Sample Processor.



6.2629.000 Screw nut to needle holder IC

On Sample Processors



6.2714.010 Dialysis membrane (cellulose acetate)

Nominal pore size : 0.2 µm. Set of 50 pieces. For inline dialysis



6.2714.020 Filtration membrane 1

Nominal pore size : 0.2 µm. Set of 50 pieces. For inline filtration



6.2714.030 Dialysis membrane (polyamide)

For inline dialysis and filtration



6.2743.040 Sample tubes 2.5 mL

2.5 mL. 2000 pieces. For IC Sample Processors



6.2743.047 Sample tubes 2.5 mL

2.5 mL. 200 pieces. For IC Sample Processors



6.2743.050 Sample tubes 11 mL

2000 pieces. For IC Sample Processors and VA Autosampler



6.2743.057 **Sample tubes 11 mL**

200 pieces. For IC Sample Processors and VA Autosampler



6.2743.070 **Stopper with perforation**

2000 pieces. For IC Sample Processors



6.2743.077 **Stopper with perforation**

200 pieces. For IC Sample Processors



6.5330.100 **IC equipment: Inline dialysis**

Accessory set for Inline Dialysis. For use with the 858 Professional Sample Processor and an additional 2-channel peristaltic pump.



6.5330.110 **IC equipment: Inline ultrafiltration**

Accessory set for Inline Ultrafiltration. For use with the 858 Professional Sample Processor.



6.5330.120 **IC equipment: Inline dilution**

Accessory set for Inline Dilution. For use with the 858 Professional Sample Processor, 800 Dosino and 741 Magnetic Stirrer.



6.5330.130 **IC equipment: Liquid Handling Station, left**

Accessory set for assembling the Liquid Handling Station on the Professional Sample Processor. The rinsing water supply can be accomplished by means of a peristaltic pump or a Dosino.



6.5330.140 **IC equipment: MiPCT**

Accessory set for Inline Preconcentration (MiPCT) including Liquid Handling Station, left.



6.5330.160 **IC equipment: MiPCT-ME**

Accessory set for assembling a Dosino for Metrohm intelligent Preconcentration Technique with Matrix Elimination (MiPCT-ME).



6.5330.170 **IC equipment: MiPuT**

Accessory set for assembling a Dosino for sample pick-up (Metrohm intelligent Pick-up Injection Technique).



6.5330.180 **IC equipment: MiPT**

Accessory set for assembling a Dosino for Partial-Loop-Injection.

