

## Accessories for 2.855.0010

Below, the accessories are grouped into Scope of delivery and Optional accessories.  
Please keep this printout at hand for ordering replacement material.  
These lists may be subject to change.

### Scope of delivery 2.855.0010

Qty.	Order no.	Description
------	-----------	-------------

1 pcs	1.855.0010	855 Robotic Titrator "Basic" (1T/1P)
-------	------------	--------------------------------------

Basic model for setting up customer-specific automation in the titration. Space-saving Robotic Sample Processor XL with integrated Titrando, one workstation including Swing Head and one built-in membrane pump. Either an external peristaltic pump or membrane pump can be connected for aspiration of the titrated solution (optional). The programming of the methods is accomplished by means of the handy **Touch Control** or with the **tiamo™** titration software.



2 pcs	6.1236.020	Sleeve with SGJ 14/12 mm
-------	------------	--------------------------

Sleeve with SGJ 14/12 mm and O-ring.



1 pcs	6.1621.000	Container 10 L
-------	------------	----------------

As rinsing or waste container in automated systems.



---

**3 pcs**     **6.1805.060**     **FEP tubing / M6 / 60 cm**  
With light and kink protection



---

**1 pcs**     **6.1805.120**     **FEP tubing / M6 / 100 cm**  
With light and kink protection



---

**1 pcs**     **6.1812.000**     **PTFE tubing 4 mm / 6 mm / 4 m**



---

**1 pcs**     **6.1828.000**     **PVDF connection nipple**

For 6.1621.000 canister.



---

**1 pcs**     **6.2053.000**     **Cable clip**  
Cable clip for fastening cables and tubes



---

**1 pcs**      **6.2103.130**      **Adapter red 2 mm plug / 4 mm socket**  
For connecting plug B (4 mm) to 2 mm socket.



---

**1 pcs**      **6.2103.140**      **Adapter black 2 mm plug / B socket 4 mm**  
For connecting plug B (4 mm) to 2 mm socket.



---

**1 pcs**      **6.2151.000**      **Cable USB A – mini-DIN 8-pin**  
Controller cable



---

**1 pcs**      **6.2621.030**      **Hexagon key 4 mm**



---

**1 pcs**      **6.2621.070**      **5 mm hex key for IC Sample Processors**



---

**1 pcs**      **6.2621.130**      **Hexagon key 2 mm**  
2 mm.



---

**1 pcs**      **6.2621.140**      **Hexagon key 2.5 mm**



---

**3 pcs**      **6.2740.020**      **Spray nozzle**  
  
For the fine-spraying of the rinsing solution.



---

**1 pcs**      **6.2751.100**      **Safety shield**  
  
Safety shield for Sample Processors with 786 Swing Head



## Optional accessories

Order no.	Description
-----------	-------------

<b>2.802.0020</b>	<b>802 Stirrer</b>
-------------------	--------------------

Rod stirrer for sample changer and Sample Processor.

With 6.1909.020 Propeller stirrer 104 mm and fixed cable.



<b>2.849.0010</b>	<b>849 Level Control</b>
-------------------	--------------------------

Additional equipment for Sample Processors for monitoring the filling level of rinsing or waste canisters via Remote. Prevents pumps from running dry and/or canisters from overflowing and is suitable for use with aqueous solutions, solvents and suspensions.



<b>6.1462.030</b>	<b>Robotic arm with transfer head for 786 Swing Head, left swinging</b>
-------------------	---

Transfer robotic arm for liquid handling purposes



<b>6.1462.040</b>	<b>Robotic arm with transfer head for 786 Swing Head, right swinging</b>
-------------------	--

Transfer robotic arm for liquid handling purposes



<b>6.1462.050</b>	<b>Robotic arm with titration head for 786 Swing Head, left or right swinging</b>
-------------------	---

Titration head for Swing Head



---

**6.1462.060 Robotic arm with holder for titration head, left swinging**

Titration head holder to 786 Swing Head



---

**6.1462.070 Robotic arm with holder for titration head, right swinging**

Titration head holder to 786 Swing Head



---

**6.1462.090 Robotic arm with Luer-Lock adapter for 786 Swing Head, right swinging**

Transfer robotic arm for liquid handling



---

**6.1462.150 Robotic arm with titration head and beaker sensor for 786 Swing Head, left or right-swinging**

Titration head with beaker sensor for 786 Swing Head, 2 x M10, 1 x SGJ 14.5, 2 x buret tip



---

**6.1462.160 Robotic arm with holder for titration head and sensor for 786 Swing Head, left swinging**

Titration head holder with beaker sensor for 786 Swing Head



---

**6.1462.170 Robotic arm with holder for titration head and sensor for 786 Swing Head, right swinging**

Titration head holder with beaker sensor for 786 Swing Head



---

**6.1909.010 Stirring propeller / 96 mm**

Propeller stirrer, length from lower edge of SGJ: 96 mm. For use with beakers with 722, 802 Rod Stirrer



---

**6.1909.020 Stirring propeller / 104 mm**

Propeller stirrer, length from lower edge of SGJ: 104 mm. For use with beakers with 722, 802 Rod Stirrer



---

**6.1909.030 Stirring propeller / 104 mm**

Propeller stirrer with PP shaft, PVDF tip. Length from the SGJ: 104 mm. For KF applications with 722, 802 Rod Stirrer



---

**6.1909.040 Stirring propeller / 102 mm**

Propeller stirrer, length from lower edge of SGJ: 102 mm. For titration vessels with SGJ 14/15 and 722, 802 Rod Stirrer



---

**6.1909.050 Propeller for 120 mL beaker (6.1459.300)**

Propeller for 802 Stirrer when this is used with sample racks for 120 mL beakers (6.1459.300)



---

**6.2041.400 Sample rack 126 x 11 mL**

Sample rack for 126 x 11 mL samples, multi-row



---

**6.2041.410 Sample rack 141 x 11 mL**

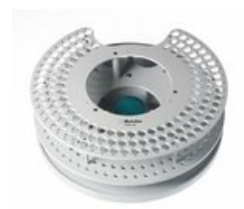
Sample rack for 141 x 11 mL samples, multi-row.



---

**6.2041.430 Sample rack 127 x 11 mL**

Sample rack for 127 x 11 mL samples with 2 rinsing beakers.



---

**6.2041.440 Sample rack 148 x 11 mL + 3 x 300 mL**

Sample rack for 148 x 11 mL samples with 3 rinsing beakers.



---

**6.2041.450 Sample rack 56 x 11 mL + 56 x 50 mL**

Multi-row sample rack for 56 samples in 11 mL sample vessels (6.2743.050) and 56 samples in sample vessels of 50 mL (6.2747.010).





---

**6.2041.710 Sample rack 160 x 6 mL**

Sample rack 160 x 6 mL vials



---

**6.2041.800 Sample rack 100 x 75 mL**

Sample rack for 100 x 75 mL samples, multi-row



---

**6.2041.810 Sample rack 34 x 150 mL**

Sample rack for 34 x 150 mL samples, multi-row



---

**6.2041.820 Sample rack 28 x 250 mL**

Sample rack for 28 x 250 mL samples (6.1432.320), multi-row



---

**6.2041.830 Sample rack 28 x 200 mL**

Sample rack for 28 x 200 mL samples (6.1459.310), multi-row



---

**6.2041.840 Sample rack 59 x 120 mL**

Sample rack for 59x120 mL samples (6.1459.300), multi-row



---

**6.2041.850 Sample rack 59 x 120 mL, PP**

Sample rack for 59x120 mL samples (6.1459.300), multi-row



---

**6.2041.900 Sample rack insert 54 x 75 mL for water bath**

Insert for waterbath rack 54 x 75 mL



---

**6.2058.110 Tower extension for Sample Processors**

Height extension 130 mm for Sample Processors. Tower extension for COD applications.



---

**6.2141.300 Remote cable 843 Pump Station to Sample Processor**

Remote cable for the direct connection of the 843 Pump Station to the pump connectors of the Sample Processors



---

**6.2148.010 Remote Box MSB**

Additional remote interface for the connection of devices that can be controlled via remote lines. With permanently attached cable.



---

**6.2840.000 Water bath for Robotic Sample Processors and Robotic Titrosampler**

Water bath rack for Robotic Sample Processors and Titrosampler.



---

**6.2841.010 External rinsing station for robotic arm with 6.1458.040 titration head**

The external rinsing station can be fitted on the side next to the Robotic Sample Processor tower, making it possible for external cleaning of the titration equipment to be carried out during additional actions on the sample rack.

