

Accessories for 2.778.0020

Below, the accessories are grouped into Scope of delivery and Optional accessories.
Please keep this printout at hand for ordering replacement material.
These lists may be subject to change.

Scope of delivery 2.778.0020

Qty.	Order no.	Description	
2 pcs	6.1236.020	Sleeve with SGJ 14/12 mm Sleeve with SGJ 14/12 mm and O-ring.	
5 pcs	6.1446.000	SGJ stopper / B-14/(15)	
3 pcs	6.1446.010	Stopper Used with Sample Changers	
1 pcs	6.1446.160	Thermometer stopper, B-14/15, oblique insertion To have the inserts of the 6.1458.010 titration head in a sloping position.	

1 pcs **6.1543.170** **Aspiration tip / M8 thread**

Aspiration tip for the Sample Processors.



2 pcs **6.1621.000** **Container 10 L**

As rinsing or waste container in automated systems.



1 pcs **6.1805.110** **FEP tubing / M6 / 80 cm**

With light and kink protection



3 pcs **6.1805.420** **FEP tubing / M6 / 48 cm**

With light and kink protection



1 pcs 6.1805.510 PTFE tubing / M8 / 60 cm

With protection against kinks.



2 pcs 6.1812.000 PTFE tubing 4 mm / 6 mm / 4 m



1 pcs 6.1820.070 Coupling 4 mm / 6 mm / M8 inner

For extending aspiration tubing in automated systems. Connects the M8 aspiration tubing directly to the 6.1812.000 PTFE tubing.



2 pcs 6.1828.000 PVDF connection nipple

For 6.1621.000 canister.



1 pcs 6.2042.020 Buret tip clip (magnetic stirrer)






Clip for proper alignment of buret tips, dosing or aspiration tubings using a magnetic stirrer in the titration beaker of a sample changer



1 pcs 6.2053.000 Cable clip

Cable clip for fastening cables and tubes




1 pcs	6.2621.030	Hexagon key 4 mm	
1 pcs	6.2621.070	5 mm hex key for IC Sample Processors	
1 pcs	6.2621.140	Hexagon key 2.5 mm	
3 pcs	6.2709.070	Guiding sleeve For fixation of buret and dosing tips in titration heads and electrode holders	
3 pcs	6.2740.020	Spray nozzle For the fine-spraying of the rinsing solution.	

1 pcs **6.2751.080** **Safety shield**

Safety shield for single-tower Sample Processors without 786 Swing Head.



Optional accessories

Order no.	Description	
2.741.0010	741 Magnetic Stirrer	
	Magnetic stirrer for sample changers.	
	The magnetic stirrer is located beneath the sample rack.	
2.802.0020	802 Stirrer	
	Rod stirrer for sample changer and Sample Processor.	
	With 6.1909.020 Propeller stirrer 104 mm and fixed cable.	
6.1458.010	Titration head, 6 x SGJ 14 and 3 x SGJ 9 openings	
	With 6xSGJ 14 and 3x SGJ 9 apertures.	
6.1458.020	Titration head /4 x M10 connectors	
	With 4 M10 screw nipples, including stoppers.	
6.1458.030	KF titration head /4 x M10 connectors	
	With 4 M10 screw nipples, including stoppers.	

6.1458.040 Titration Head, 3 x SGJ 14

Titration head for 120 mL beakers. With 3 openings SGJ 14 and 4 openings 6.4 mm, 2 dosing tips included. Suitable for rinsing and aspiration equipment.



6.1458.070 Titration head / 2 x SGJ 14

Titration head for 75 mL beakers. With 2 openings SGJ 14, 2 openings 6.4 mm, 1 opening M10 and 3 pre-mounted dosing tips. Suitable for rinsing and aspiration equipment.



6.2041.310 Sample rack 12 x 250 mL

Sample rack for 12 x 250 mL, one row



6.2041.320 Sample rack 16 x 150 mL

Sample rack for 16 x 150 mL samples, one-row



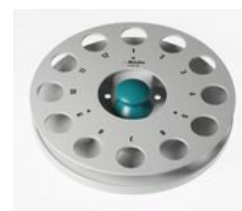
6.2041.340 Sample rack 24 x 75 mL

Sample rack for 24 x 75 mL samples, one-row.



6.2041.360 Sample rack for 12 x 150 mL

Sample rack for 12 x 150 mL samples, one-row



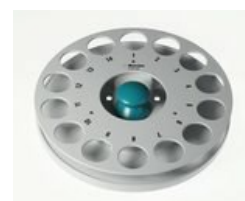
6.2041.370 Sample rack 14 x 200 mL

Sample rack for 14 x 200 mL samples, one-row



6.2041.380 Sample rack 14 x 235 mL

Sample rack for 14 x 235 mL samples, one-row



6.2041.390 Sample rack 16 x 120 mL

Sample rack for 16 x 120 mL samples, one-row



6.2041.460 Sample rack 21 x 100 mL (COD)

Sample rack 21 x 100 mL for the determination of COD



6.2041.470 Sample rack 22 x 120 mL

Sample rack for 22 x 120 mL samples (6.1459.300), single-row.



6.2711.060 Drip pan for 778/810/814/838/858 Sample Processors

Drip pan for 778, 810, 814, 838, 858 Sample Processors

