



Application Note AN-NIR-093

# Quality Control of fermentation processes

## Multiparameter determination within one minute

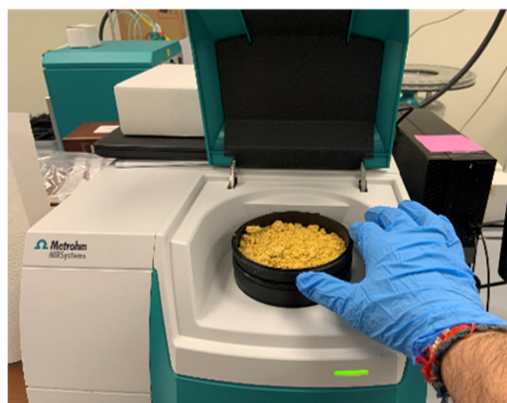
The production of biofuels from renewable feedstock has grown immensely in the past several years. Bioethanol is one of the most interesting alternatives for fossil fuels, since it can be produced from raw materials rich in sugars and starch. Ethanol fermentation is one of the oldest and most important fermentation processes used in the biotechnology industry. Although the process is well-known, there is a great potential for its improvement and a

proportional reduction in production costs. Due to the seasonal variation of feedstock quality, ethanol producers need to monitor the fermentation process to ensure the same quality product is achieved.

Near-infrared spectroscopy (NIRS) offers **rapid and reliable prediction** of ethanol content, sugars, Brix, lactic acid, pH, and total solids at any stage of the fermentation process.

## EXPERIMENTAL EQUIPMENT

Production of ethanol from corn goes through three typical steps: milling / liquefaction of corn into starch mash, fermentation of starch mash with yeast, and finally purification of the resulting ethanol by distillation. A total of 206 samples (117 for Brix index) of fermentation mash were analyzed on the DS2500 Solid Analyzer. Due to the large amount of solids present in the samples, all measurements were performed in reflection mode using the DS2500 Large sample cup (**Figure 1**). The samples were measured in rotation to collect spectral data from several areas. Spectral averaging of signals from several spots helped to reduce sample inhomogeneity. The Metrohm software package Vision Air Complete was used for all data acquisition and prediction model development.



**Figure 1.** Fermentation mash sample placed on the DS2500 Solid Analyzer.

**Table 1.** Hardware and software equipment overview

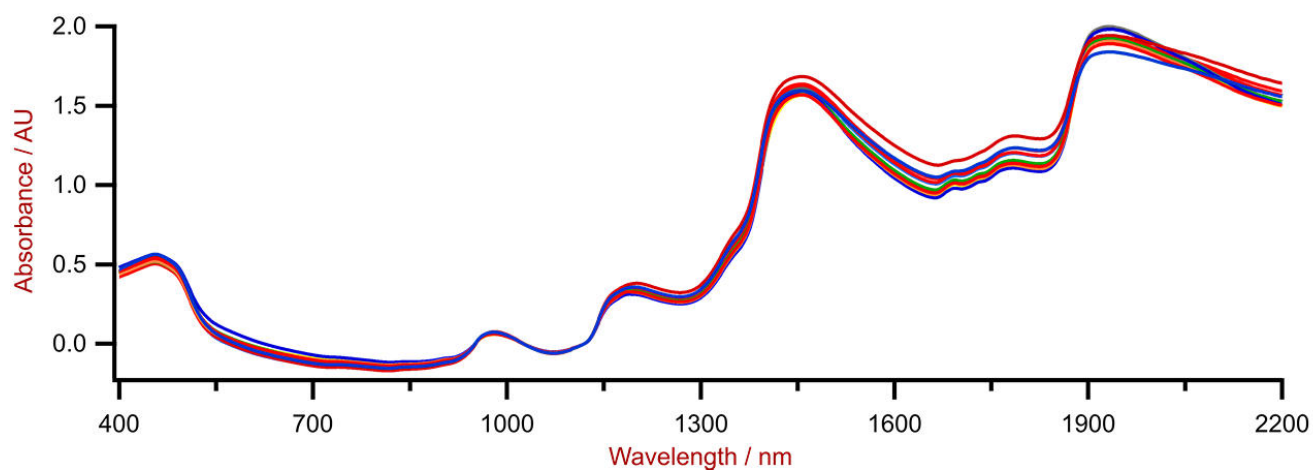
Equipment	Metrohm number
DS2500 Analyzer	2.922.0010
DS2500 Large Sample Cup	6.7402.050
Vision Air 2.0 Complete	6.6072.208

## RESULT

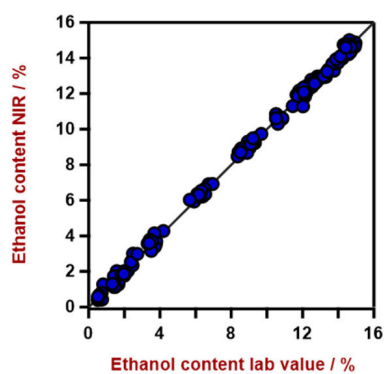
All 206 measured Vis-NIR spectra (**Figure 2**) were used to create a prediction model for quantification of the key fermentation parameters. The quality of the prediction model was evaluated using correlation diagrams, which

display a very high correlation between the Vis-NIR prediction and the reference values. The respective figures of merit (FOM) display the expected precision of a prediction during routine analysis.





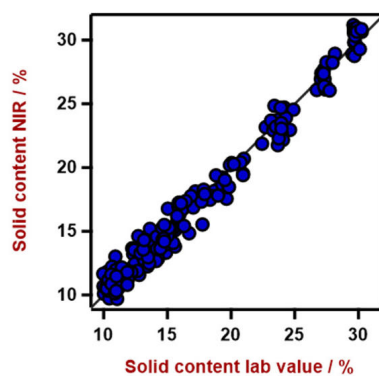
**Figure 2.** Vis-NIR spectra of fermentation mash samples analyzed on a DS2500 Solid Analyzer.



**Figure 3.** Correlation diagram for the prediction of ethanol content using a DS2500 Solid Analyzer. The ethanol content lab value was evaluated using HPLC.

**Table 2.** Figures of merit for the prediction of ethanol content using a DS2500 Solid Analyzer.

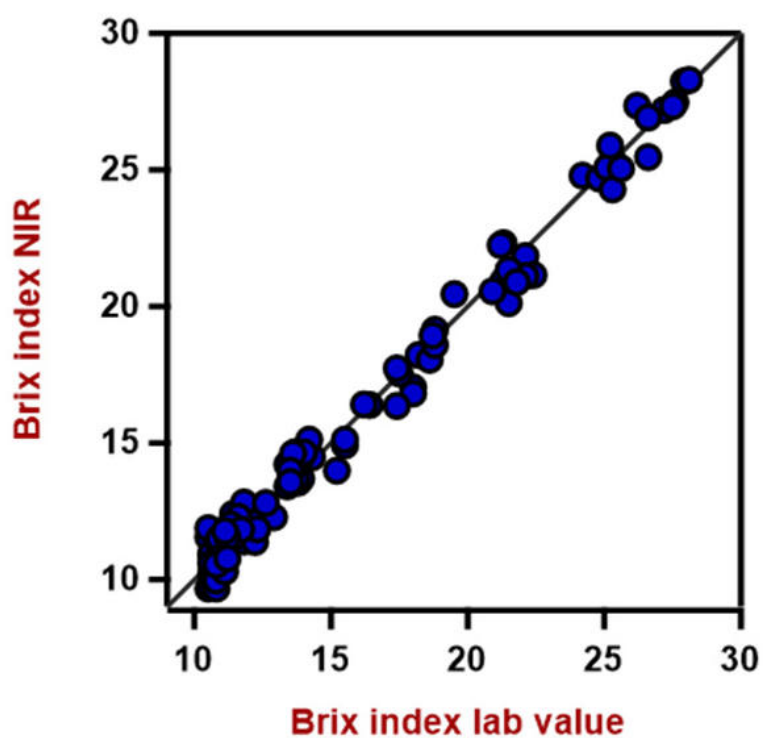
Figures of merit	Value
$R^2$	0.998
Standard error of calibration	0.21%
Standard error of cross-validation	0.22%



**Figure 4.** Correlation diagram for the prediction solid content using a DS2500 Solid Analyzer. The lab value was evaluated by LOD balance.

**Table 3.** Figures of merit for the prediction solid content using a DS2500 Solid Analyzer.

Figures of merit	Value
$R^2$	0.982
Standard error of calibration	0.87%
Standard error of cross-validation	1.06%

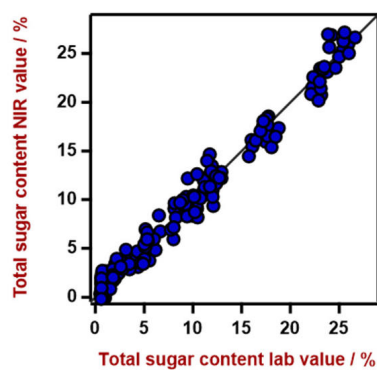


**Figure 5.** Correlation diagram for the prediction of Brix index values. The lab value was measured using a refractometer.

**Table 4.** Figures of merit for the prediction of Brix index values.

Figures of merit	Value
$R^2$	0.987
Standard error of calibration	0.66
Standard error of cross-validation	0.87

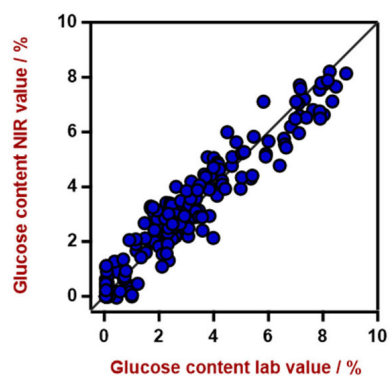
## RESULT



**Figure 6.** Correlation diagram for the prediction of the total sugar content. The total sugar content lab value was measured using HPLC.

**Table 5.** Figures of merit for the prediction of the total sugar content.

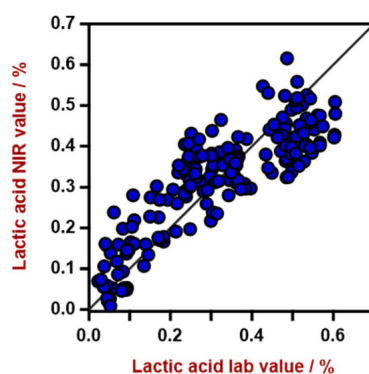
Figures of merit	Value
$R^2$	0.981
Standard error of calibration	1.09%
Standard error of cross-validation	1.30%



**Figure 7.** Correlation diagram for the prediction of glucose content. The glucose content lab value was measured using HPLC.

**Table 6.** Figures of merit for the prediction of the glucose content.

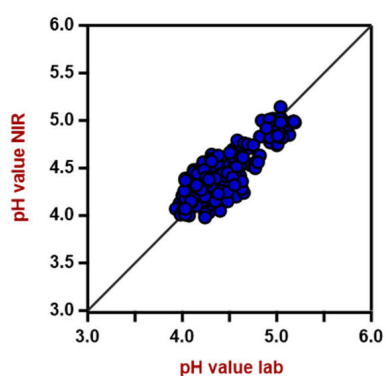
Figures of merit	Value
$R^2$	0.920
Standard error of calibration	0.70%
Standard error of cross-validation	0.86%



**Figure 8.** Correlation diagram for the prediction of lactic acid content. The lactic acid lab value was evaluated using HPLC.

**Table 7.** Figures of merit for the prediction of lactic acid content.

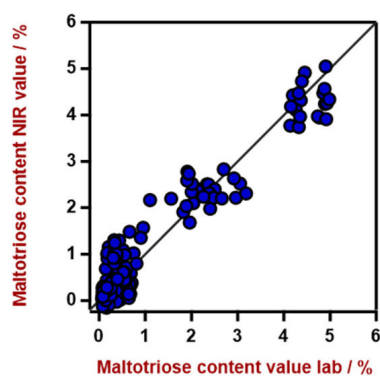
Figures of merit	Value
$R^2$	0.722
Standard error of calibration	0.09%
Standard error of cross-validation	0.10%



**Figure 9.** Correlation diagram for the prediction of pH value. The pH lab value was measured using a pH meter.

**Table 8.** Figures of merit for the prediction of pH value.

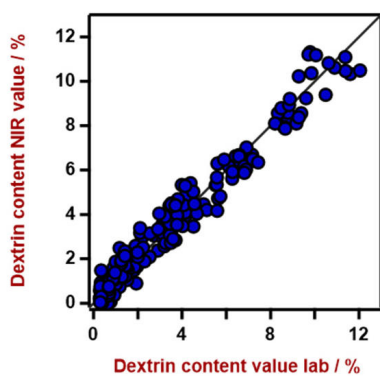
Figures of merit	Value
$R^2$	0.734
Standard error of calibration	0.17
Standard error of cross-validation	0.19



**Figure 10.** Correlation diagram for the prediction of maltotriose content. The maltotriose lab value was measured using HPLC.

**Table 9.** Figures of merit for the prediction of maltotriose content.

Figures of merit	Value
$R^2$	0.928
Standard error of calibration	0.36%
Standard error of cross-validation	0.42%



**Figure 11.** Correlation diagram for the prediction of dextrin content. The dextrin lab value was measured using HPLC.



**Table 10.** Figures of merit for the prediction of dextrin content.

Figures of merit	Value
$R^2$	0.964
Standard error of calibration	0.60%
Standard error of cross-validation	0.68%

This application note demonstrates the feasibility to determine multiple key parameters of the fermentation process with NIR spectroscopy. Corn fermentation is a well-established process which typically runs for 55–60 hours. Samples are extracted from fermenters every few hours and sent

to the laboratory for analytical measurement. Several analytical methods need to be used to monitor key quality parameters for the fermentation process. Vis-NIR spectroscopy enables a fast alternative with high accuracy, and therefore represents a suitable single method to monitor the fermentation process.

**Table 11.** Time to result overview for the different parameters

Parameter	Method	Time to result
Ethanol, sugars	HPLC	30–45 min
Brix index	Refractometer	3–5 min
pH	pH meter	3–5 min
Solids	LOD Balance	10–15 min

## CONTACT

Metrohm AG  
Ionenstrasse  
9100 Herisau

[info@metrohm.com](mailto:info@metrohm.com)



### DS2500 Solid Analyzer

固的近外光,用于生境和室中的量。

DS2500 分析是的活解决方案,用于整个生程中的固体、乳膏和液体行常分析。其固的使 DS2500 Analyzer 分析不受灰、湿度、振和温度波的影,因此非常用于在劣的生境中使用。

DS2500 涵盖了从 400 到 2500 nm 的整个光范,并能在不到一分内提供准和可再的果。DS2500 Analyzer 足制行的要求,并由于操作便而能助用完成其日常工作任。

由于与匹配,附件可以承受任何具有挑性的品型,例如:粒料之的粗粒固体或乳膏之的半固体品,可得果。量固体的候,使用 MultiSample Cup 可以提高生率,可以自批量量多 9 个品。



### DS2500

用于在不同品位置使用 NIRS DS2500 Analyzer 采集粉末和粒反射光的大号品容器。



## Vision Air 2.0 Complete

Vision Air – 通用的光分析件。

Vision Air Complete 是用于管范境的先易用的件解决方案。

Vision Air 点一:

- 便捷的件用和配的用界面保了直的操作方式
- 操作程的建与方式
- SQL 数据,可安全且地管理数据

Vision Air Complete (66072208) 版本包含所有用于可近外光分析量保程的用:

- 器和数据管理用
- 方法用
- 常分析用

其它 Vision Air Complete 解决方案:

- 66072207 (Vision Air Network Complete)
- 66072209 (Vision Air Pharma Complete)
- 66072210 (Vision Air Pharma Network Complete)