



Application Note AN-V-228

用水中的

Method using the scTRACE Gold modified with a silver film

Presence of thallium in surface water is an indicator of industrial effluents and poses a serious health hazard if imbibed. Monitoring of thallium concentration can easily be done with anodic stripping voltammetry on the silver film modified scTRACE Gold.

This non-toxic method allows the determination of thallium concentrations between 10–250 $\mu\text{g/L}$. The determination is carried out with the 946 Portable VA Analyzer. The main advantage of this procedure is the unique design of the

sensor, the scTRACE Gold electrode. It consists of a gold microwire working electrode, Ag/AgCl reference electrode, and a carbon auxiliary electrode on a ceramic substrate. The electrode is easy to handle and does not need extensive maintenance such as mechanical polishing. The possibility to re-plate the silver film allows a quick and easy regeneration of the sensor. This method is best suited for measurements in the field.

SAMPLE

Drinking water, mineral water, sea water

EXPERIMENTAL

Prior to the first determination, the silver film is deposited from a silver solution on the scTRACE Gold electrode. In the next step, the electrodes are cleaned with ultrapure water and the measuring vessel is emptied. The water sample and the supporting electrolyte with EDTA are pipetted into the measuring vessel. The determination of thallium is carried out with a 946 Portable VA Analyzer using the parameters specified in **Table 1**. The concentration is determined by two additions of a thallium standard addition solution.

The scTRACE Gold is electrochemically activated prior to the first determination.

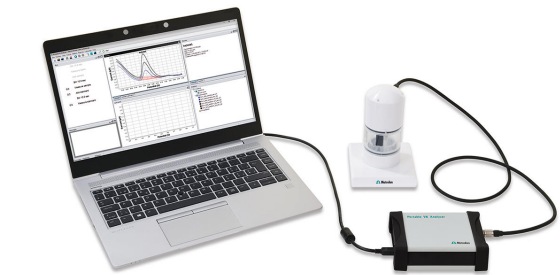


Figure 1. 946 Portable VA Analyzer

Table 1. Parameters

Parameter	Setting
Mode	SQW – Square wave
Deposition potential	-1.0 V
Deposition time	90 s
Start potential	-1.0 V
End potential	-0.25 V
Peak potential Tl	-0.62 V

ELECTRODES

- scTRACE Gold

RESULTS

The method is suitable for the determination of thallium concentrations up to 150 µg/L. The

limit of detection with 90 s deposition time is approximately 10 µg/L.

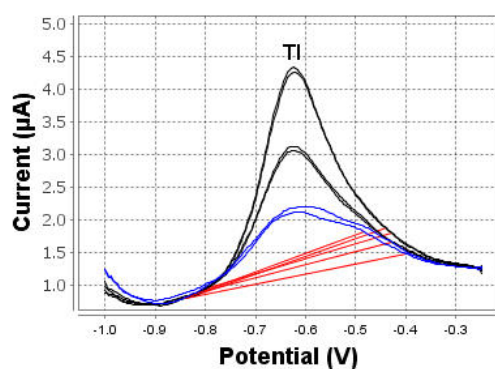


Figure 2. Determination of thallium in tap water spiked with 30 µg/L

Table 2. Result

Sample	Tl (g/L)
Tap water spiked with 30 g/L Tl	30.7

RESULTS

Internal reference: AW VA CH4-0588-122019

CONTACT

Metrohm AG
Ionenstrasse
9100 Herisau

info@metrohm.com

CONFIGURATION



946 Portable VA Analyzer (scTRACE Gold)

用于测定重金属,如痕量汞、砷、或之重金属的便携式金属分析器。scTRACE Gold 用的器版本。系由恒位和集成了拌器与可更式的独立量台成。用 Portable VA Analyzer 件。源由 USB 接口和内置的可充池提供。装在手提箱内交付,包含所有必需的附件。