



Application Note AN-V-218

Bismuth in drinking water

Straightforward determination by voltammetry using a gold microwire electrode

Bismuth is considered as a metal with a very low toxicity. However, in high concentrations toxic effects have been described. There is no guideline value for bismuth in the World Health Organization's «Guidelines for Drinking-water Quality» because typical levels usually found in drinking water are of no concern.

Anodic stripping voltammetry is a viable, less sophisticated alternative to atomic absorption

spectroscopy (AAS) for the determination of bismuth in drinking water. While AAS (and competing methods) can only be performed in a laboratory, anodic stripping voltammetry can be used in the laboratory or alternatively in the field with the 946 Portable VA Analyzer. The determination is carried out on the scTRACE Gold electrode.

SAMPLE

Bottled mineral water

EXPERIMENTAL

The scTRACE Gold is electrochemically activated prior to the first determination. In the next step, the water sample and the supporting electrolyte are pipetted into the measuring vessel. The determination is carried out with the 884 Professional VA or with the 946 Portable VA Analyzer using the parameters specified in **Table 1**. The concentration is determined by two additions of a standard addition solution.



Figure 1. 946 Portable VA Analyzer (scTRACE Gold version)



Figure 2. 884 Professional VA fully automated for VA

Table 1. Parameters

Parameter	Setting
Mode	DP – Differential Pulse
Deposition potential	-0.1 V
Deposition time	30 s
Start potential	-0.2 V
End potential	0.3 V
Peak potential Bi	0.08 V

ELECTRODES

- scTRACE Gold

RESULTS

The limit of detection of the method is about 1 g/L with the 946 Portable VA Analyzer, and

approximately 0.03 g/L with the 884 Professional VA.

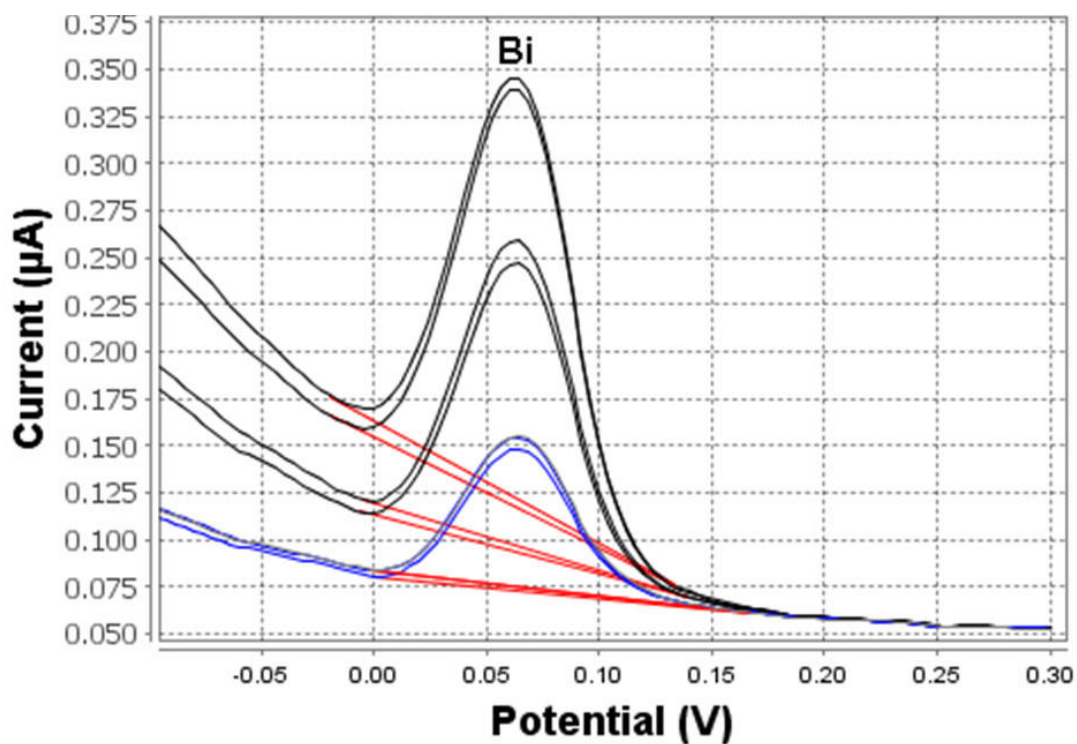


Figure 3. Determination of bismuth (946 Portable VA Analyzer; 30 s deposition time)

Table 2. Results of the measurement of Bi in tap water

Sample	Bi (g/L)
Tap water	20.4

Internal references: AW VA CH4-0568-042018, AW

VA CH4-0577-022019

CONTACT

Metrohm AG
Ionenstrasse
9100 Herisau

info@metrohm.com

CONFIGURATION



(MME) 884 Professional VA manual

用于多模式 (MME) 的 884 Professional VA manual 是借助多模式 pro 或 scTRACE Gold 或液滴使用伏安法和法行痕量分析的入器。此已的瑞士万通技与恒位/恒位以及外接的活 viva 件用,在重金属定域中展了新的前景。有的校准器的恒位在每次量之前均自冲洗行校准,保可能的高精度。

通此器也可使用旋行定,例如借助«循伏安溶出法»(CVS)、«循脉冲伏安溶出法»(CPVS)和位法(CP)定池中的有机添加。借助可更的量,可在使用不同的各用之快速切。

使用 **viva** 件行控制、数据采集和估。

用于 MME(多模式)的 884 Professional VA manual
供配大量附件,包括用于多模式 pro 的量。和 viva 可
独。



VA scTRACE Gold Professional VA

, scTRACE GoldscTRACE Gold



946 Portable VA Analyzer (scTRACE Gold)

,,,,,,,,,scTRACE Gold Portable VA Analyzer USB ,