

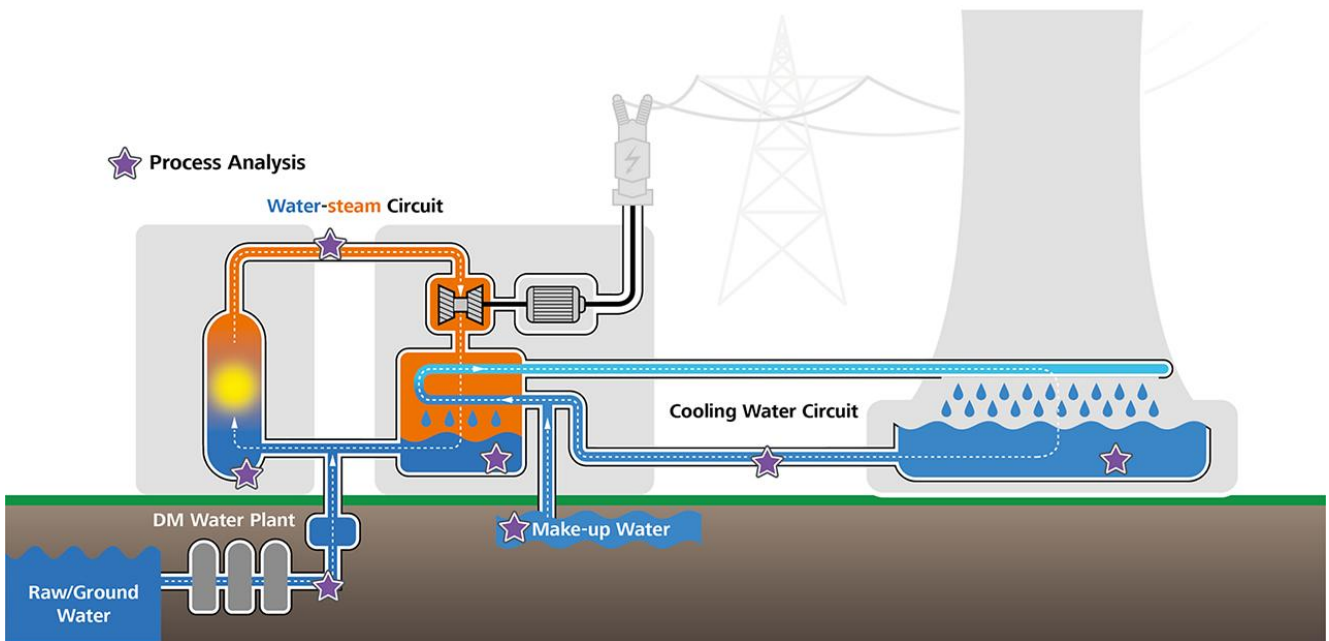


Application Note AN-PAN-1043

# Online trace analysis of cations in the primary circuit of nuclear power plants

In power plants, corrosion is the primary factor leading to costly and critical downtimes. Pressurized water reactors (PWR) are generally designed with a third water circuit in addition to the two found in other thermal power plants (e.g., boiling water reactors (BWRs) or coal-fired and geothermal power plants). In this so-called «primary circuit», the primary coolant water is

pumped under high pressure to absorb heat generated by nuclear fission, further transferring this heat to the secondary circuit. The PWR ensures that radioactive materials remain contained and do not disperse to the secondary circuit and therefore potentially to the environment.



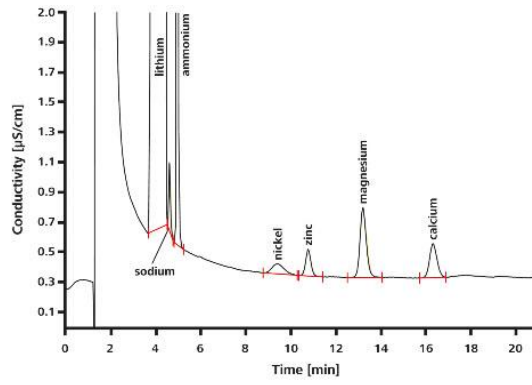
**Figure 1.** Diagram of a 3-water circuit nuclear power plant with stars noting areas where online process analysis can be integrated into the system.

This additional water circuit entails some specific requirements regarding chemical analysis and monitoring. In the PWR, light water is used as primary coolant. Boron (as boric acid,  $H_3BO_3$ ) readily absorbs neutrons and is added to the coolant to control reactivity. Additions of monoisotopic lithium hydroxide (LiOH) to the primary circuit assures a pH value greater than 7 to prevent corrosion. **Lithium** is therefore a critical parameter to monitor in PWRs.

**Nickel** is an important alloying metal that increases the corrosion resistance of steel.

However, in the dissolved form, nickel promotes corrosion, making regular checks of the  $Ni^{2+}$  concentration necessary.

In addition, metals released by corrosion undergo nuclear reactions and thus increase radiation in the power plant. To limit corrosion of the materials and to prevent the formation of radioactive products, the water is often treated with depleted zinc oxide. The **zinc** concentration must be monitored as well to ensure radioactivity does not spread.



**Figure 2.** Simulated sample from the primary circuit of a pressurized water reactor containing 2 g/L  $\text{H}_3\text{BO}_3$  and 3.3 mg/L LiOH spiked with 2  $\mu\text{g/L}$  nickel, zinc, calcium, and magnesium; preconcentration volume: 1000  $\mu\text{L}$ .

## APPLICATION

These cations and more can be determined down to the sub- $\mu\text{g/L}$  range in a single analysis using ion chromatography. However, precise, reliable trace analysis requires the method to be automated as much as possible. Metrohm Process Analytics offers a complete solution for this task: the **2060 Ion Chromatograph (IC) Process Analyzer** featuring combined Inline Preconcentration and Inline Matrix Elimination. With one injection, the 2060 IC Process Analyzer is able to measure numerous ionic compounds in aqueous media from  $\text{ng/L}$  to % concentrations. The analysis system is fed directly and continuously with samples via a bypass in the process. Automatic calibration guarantees excellent detection limits, a high reproducibility, and excellent recovery rates.

The 2060 IC Process Analyzer provides alarms if preset warning or intervention concentration limits are reached, helping to save costs by preventing irreparable damage due to corrosion. The 2060 IC Process Analyzer can monitor both anions and cations with a single ion chromatograph and two detector blocks, giving a comprehensive overview of the water circuit chemistry. The possibility to connect one analyzer to up to 20 sample streams means multiple areas within water-steam circuits in a power plant can be monitored by a single instrument. With a built-in eluent production module and optional PURELAB® flex 5/6 from ELGA® for pressureless ultrapure water, the 2060 IC Process Analyzer can be configured to run trace anion analyses autonomously for up to several weeks.

The analysis is carried out fully automatically using a combination of Inline Matrix Elimination (for the  $\text{H}_3\text{BO}_3$ ) and Inline Neutralization (for the  $\text{LiOH}$ ). Analyte detection is by conductivity.



**Figure 3.** The 2060 IC Process Analyzer is available with either one or two measurement channels, along with integrated liquid handling modules and several automated sample preparation options.

## BENEFITS FOR IC IN PROCESS

- **Inline eluent preparation** ensures consistently stable baselines
- Protect valuable **company assets** (e.g. pipes, PWR, and turbines, which are prone to corrosion)
- **Safe working environment** and automated sampling)
- **High precision analyses** for a wide spectrum of analytes with multiple types of detectors



---

## FURTHER READING

### Related application notes

[Copper, nickel, zinc, and common cations in the water-steam cycle of a boiling water reactor \(BWR\)](#)

[Zinc, nickel, calcium, and magnesium in borated water of a pressurized water reactor \(PWR\)](#)

[Lithium in borated water of a pressurized water reactor \(PWR\)](#)

[Online analysis of trace cations in power plant water matrices](#)

### Other related documents

[8.000.6072EN Trace-level determination of cations in the secondary circuit of a PWR-type](#)

[nuclear power plant using ion chromatography after inline sample preparation](#)

## CONTACT

瑞士万通中国  
北京市海淀区上地路1号院  
1号楼7702  
100085 北京

[marketing@metrohm.com.cn](mailto:marketing@metrohm.com.cn)

## CONFIGURATION



### 2060 IC Process Analyzer

Metrohm Process Analytics 的 2060 Ion Chromatograph (IC) Process Analyzer 基于模块化 2060 平台概念。模块化的体系可将机分在工厂周的不同位置,并可接多 20 个本流,从而可在工厂内部的多个区域行省的序分析。

此分析在硬件、件和用定制方面没有限制。从淋洗液生成模、用于品滴定的取部模以及多个 IC 池,2060 IC Process Analyzer 具有任何工用需要的所有。

2060 件是一 "多合一" 件解决方案,可控制分析行常分析,并有不同的操作方法、表和。此外,由于程通信多多(例如 Modbus 或 Discrete I/O),可 2060 件行程,以向程送自反和警,并必要采取行(例如,重新量品或始清周期)。所有些功能可保每周 7 天全天候工程行全自断。