



Application Note AN-V-233

Selenium(IV) in drinking water

Direct determination in low $\mu\text{g/L}$ range on the scTRACE Gold

The difference between the toxic and essential levels of selenium to human health are very slight. Therefore, the current provisional guideline value for selenium(IV) in the World Health Organization's «Guidelines for Drinking-water Quality» and in the European Drinking Water Directive is set to a maximum concentration of $10 \mu\text{g/L}$.

The anodic stripping voltammetric (ASV)

technique performed on the unmodified scTRACE Gold can be used to determine concentrations as low as $0.5 \mu\text{g/L}$ selenium with a 30 s deposition time. These limits can be lowered even further by increasing the deposition time. The linear range at 30 s deposition time ends at approximately $100 \mu\text{g/L}$.

The advantage of this method lies in the

innovative and cost-effective sensor used for this application: the scTRACE Gold. It is a combined sensor containing the working, reference, and auxiliary electrode integrated on a single ceramic substrate. The scTRACE Gold electrode does not need extensive maintenance such as

mechanical polishing. Measurements can be performed in the laboratory with the 884 Professional VA or alternatively in the field with the 946 Portable VA Analyzer. This method is suited for manual or automated systems.

SAMPLE

Drinking water, mineral water

EXPERIMENTAL

The scTRACE Gold is electrochemically activated prior to the first determination. In the next step, the water sample and the supporting electrolyte are pipetted into the measuring vessel. The determination of selenium(IV) is carried out with the 884 Professional VA or with the 946 Portable VA Analyzer using the parameters specified in **Table 1**. The concentration is determined by two additions of an selenium(IV) standard addition solution.



Figure 1. 946 Portable VA Analyzer (scTRACE Gold)



Figure 2. 884 Professional VA, semiautomated for VA analysis

Table 1. Parameters

Parameter	Setting
Mode	DP – Differential Pulse
Deposition potential	-0.375 V
Deposition time	90 s
Start potential	0.375 V
End potential	0.75 V
Peak potential Se	0.62 V

ELECTRODES

- scTRACE Gold

RESULTS

At a 30 s deposition time, this method is suitable for the determination of selenium(IV) in water samples in concentrations of β (Se(IV)) = 0.5–50

$\mu\text{g/L}$ using the 884 Professional VA and β (Se(IV)) = 6–75 $\mu\text{g/L}$ using the 946 Portable VA Analyzer.

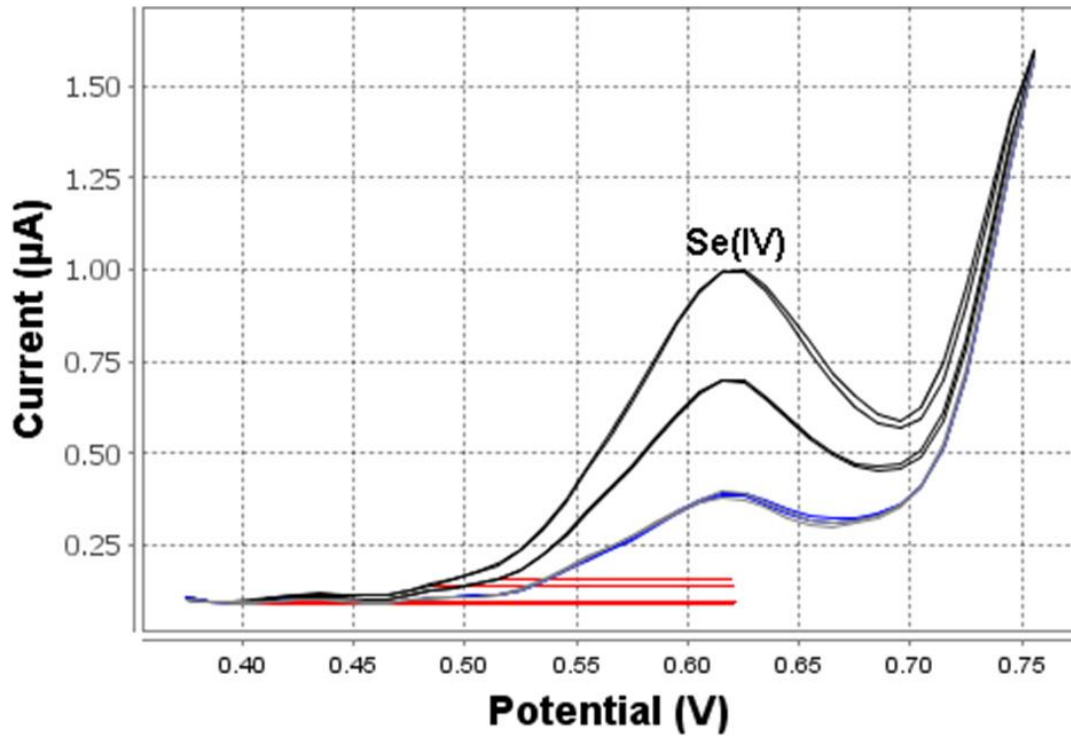


Figure 3. Determination of Se(IV) in mineral water spiked with 10 $\mu\text{g/L}$ (946 Portable VA Analyzer; 90 s deposition time)

Table 2. Results of Se measurement in spiked mineral water

Sample	Se(IV) ($\mu\text{g/L}$)
Mineral water spiked with 10 $\mu\text{g/L}$	10.22

Internal references: AW VA CH4-0598-082020,

AW VA CH4-0601-092020

CONTACT

瑞士万通中国
北京市海淀区上地路1号院
1号楼7702
100085 北京

marketing@metrohm.com.cn

CONFIGURATION



(MME) 884 Professional VA manual

用于多模式 (MME) 的 884 Professional VA manual 是借助多模式 pro 或 scTRACE Gold 或液滴使用伏安法和法行高端痕量分析的入器。此已的瑞士万通技与高效位/恒位以及外接的活 viva 件用,在重金属定域中展了新的前景。有的校准器的恒位在每次量之前均自冲洗行校准,保可能的最高精度。

通此器也可使用旋行定,例如借助«循伏安溶出法»(CVS)、«循脉冲伏安溶出法»(CPVS)和位法(CP)定池中的有机添加。借助可更的量,可在使用不同的各用之快速切。

使用 viva 件行控制、数据采集和估。

用于 MME(多模式)的 884 Professional VA manual 供配大量附件,包括用于多模式 pro 的量。和 viva 可独。



VA scTRACE Gold Professional VA

整套,用于定或汞。包括用于 scTRACE Gold、scTRACE Gold、拌器和量杯的支架。



946 Portable VA Analyzer (scTRACE Gold)

用于定重金属,如痕量汞、砷、或之重金属的便携式金属分析器。scTRACE Gold 用的器版本。系由恒位和集成了拌器与可更式的独立量台成。用 Portable VA Analyzer 件。源由 USB 接口和内置的可充池提供。装在手提箱内交付,包含所有必需的附件。