



## Application Note AN-V-216

# 用水中的

## Straightforward determination by voltammetry using a gold microwire electrode (DHN method)

Iron is an essential element in human nutrition. It can be present in drinking water as a result of water treatment or from corrosion in the water piping system. There is no guideline value for iron in the World Health Organization's «Guidelines for Drinking-water Quality» because typical levels usually found in drinking water are of no concern. However, there are national limit values in various countries. The European Union has set a guideline indicator value for iron of 200 µg/L.

Voltammetry is a viable, less sophisticated

alternative to atomic absorption spectroscopy (AAS) for the determination of iron in drinking water. While AAS (and competing methods) can only be performed in a laboratory, adsorptive stripping voltammetric determinations can be done used conventionally in the laboratory or alternatively in the field using the with 946 Portable VA Analyzer. The determination is carried out with adsorptive stripping voltammetry (AdSV) using 2,3-dihydroxynaphthalene (DHN) on the scTRACE Gold electrode.

## SAMPLE

Tap water

## EXPERIMENTAL

The scTRACE Gold is electrochemically activated prior to the first determination. In the next step, the water sample and the supporting electrolyte are pipetted into the measuring vessel. The determination is carried out with the 884 Professional VA or with the 946 Portable VA Analyzer using the parameters specified in **Table 1**. The concentration is determined by two additions of a standard addition solution.



**Figure 1.** 946 Portable VA Analyzer (scTRACE Gold version)



**Figure 2.** 884 Professional VA fully automated for VA

**Table 1.** Parameters

Parameter	Setting
Mode	DP – Differential Pulse
Deposition potential	0 V
Deposition time	30 s
Start potential	-0.3 V
End potential	-0.95 V
Peak potential Fe	-0.65 V

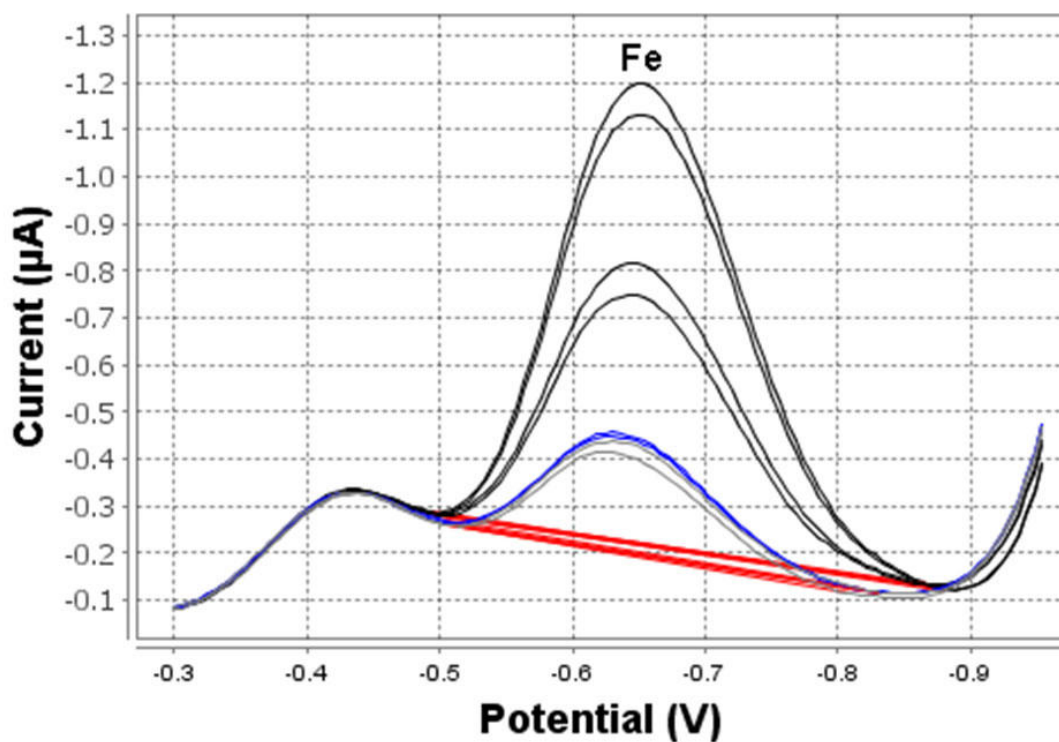
## ELECTRODES

- scTRACE Gold

## RESULTS

The limit of detection of the method is about 10  $\mu\text{g/L}$  with the 946 Portable VA Analyzer, and

approximately 0.3  $\mu\text{g/L}$  with the 884 Professional VA.



**Figure 3.** Determination of iron in tap water (946 Portable VA Analyzer; 30 s deposition time)

**Table 2.** Results for the measurement of Fe in spiked tap water

Sample	Fe, blank subtracted (µg/L)
Tap water (spiked)	10

Internal references: AW VA CH4-0578-032019;

AW VA CH4-0582-042019

## CONTACT

瑞士万通中国  
北京市海淀区上地路1号院  
1号楼7702  
100085 北京

marketing@metrohm.com.cn

## CONFIGURATION



### (MME) 884 Professional VA manual

用于多模式 (MME) 的 884 Professional VA manual 是借助多模式 pro 或 scTRACE Gold 或液滴使用伏安法和法行痕量分析的入器。此已的瑞士万通技与恒位/恒位以及外接的活 viva 件用,在重金属定域中展了新的前景。有的校准器的恒位在每次量之前均自冲洗行校准,保可能的高精度。

通此器也可使用旋行定,例如借助«循伏安溶出法»(CVS)、«循脉冲伏安溶出法»(CPVS)和位法(CP)定域中的有机添加。借助可更的量,可在使用不同的各用之快速切。

使用 **viva** 件行控制、数据采集和估。

用于 MME(多模式)的 884 Professional VA manual 供配大量附件,包括用于多模式 pro 的量。和 **viva** 可独。



### VA scTRACE Gold Professional VA

整套,用于定或汞。包括用于 scTRACE Gold、scTRACE Gold、拌器和量杯的支架。



### 946 Portable VA Analyzer (scTRACE Gold)

用于定重金属,如痕量,汞,,,,,,、或之重金属的便携式金属分析器。scTRACE Gold 用的器版本。系由恒位和集成了拌器与可更式的独立量台成。用 Portable VA Analyzer 件。源由 USB 接口和内置的可充池提供。装在手提箱内交付,包含所有必需的附件。