



Application Note AN-T-097

# Base number in petroleum products

## Potentiometric determination according to ISO 3771, ASTM D2896, and IP 276

Basic chemicals are added to petroleum products to prevent corrosion as they neutralize acidic components that form during the use and aging of these products. The base number (BN) gives an indication regarding the amount of these basic additives present, and it can be used as a measure for the degradation of the petroleum product.

The use of a pH electrode suitable for non-aqueous titrations ensures the reliable determination of the equivalence point. A

flexible sleeve diaphragm facilitates its cleaning especially after use in heavily contaminated samples, such as used engine oils. Using the correct electrode greatly increases the precision and reliability of the results.

This Application Note describes the potentiometric determination of the base number according to ISO 3771, ASTM D2896, and IP 276 using the Metrohm Solvotrode easyClean and a fully automated OMNIS system.

## SAMPLE AND SAMPLE PREPARATION

This application is demonstrated on lubricating oil and fresh motor oil.

Care should be taken to use a representative,

well-homogenized sample portion. Otherwise, no sample preparation is necessary.

## EXPERIMENTAL

The analysis is carried out on an automated system consisting of an OMNIS Sample Robot S and an OMNIS Advanced Titrator equipped with a Solvotrode easyClean.

Before the samples are measured, a blank determination is performed using the same amount of solvent as for the sample titration.

The sample is dissolved in a solvent mixture consisting of toluene, glacial acetic acid, and acetone. For the most efficient release of the basic constituents, these three solvents are added subsequently with a waiting time between the additions. Then the solution is titrated with standardized perchloric acid in glacial acetic acid until after the equivalence point is reached.

After each sample determination, the electrode needs to be rinsed with solvent solution, then isopropyl alcohol (IPA) followed by water. To rehydrate the glass membrane of the electrode, the glass membrane is placed into deionized water.

## RESULTS

For the tested samples, well-defined titration curves are obtained with acceptable results and low standard deviations. Results are summarized

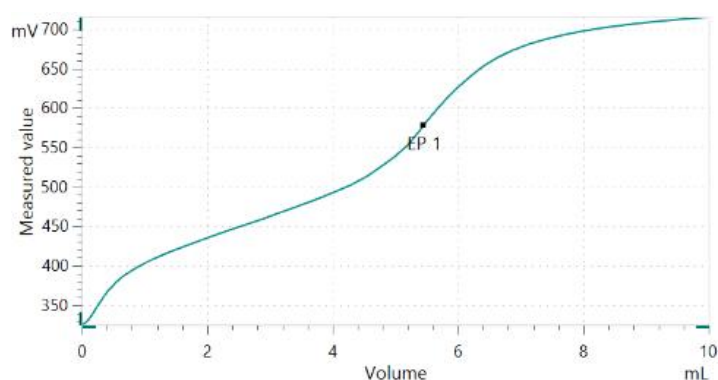
in **Table 1**. An example titration curve is displayed in **Figure 2**.



**Figure 1.** Sample Robot and OMNIS Titrator Advanced equipped with a Solvotrode easyClean for the determination of the base number of lubricating oil and motor oil.

**Table 1.** Results for the acid number determination according to ASTM D2896 on a fully automated OMNIS system.

BN in mg KOH/g sample	lubricating oil (n = 3)	motor oil (n = 26)
Mean	0.397	7.2325
SD(abs)	0.0001	0.0727
SD(rel)	0.03	1.01



**Figure 2.** Example titration curve of the base number determination in fresh motor oil.

## CONCLUSION

Fully automated determination of the base number of petroleum products according to **ASTM D2896**, **ISO 3771**, and **IP 276** can be achieved using a Metrohm OMNIS system. Using an OMNIS Sample Robot allows the fully automated titration of up to four samples

simultaneously, increasing throughput. The OMNIS platform offers the opportunity to customize your system according to your needs and expand it for other required titration applications.

Internal reference: AW TI CH1-1238-122016

## CONTACT

瑞士万通中国  
北京市海淀区上地路1号院  
1号楼7702  
100085 北京

marketing@metrohm.co  
m.cn

## CONFIGURATION



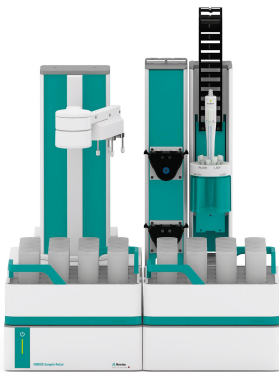
### OMNIS Advanced Titrator

新型、模式位分析 OMNIS Titrator 滴定,用于行点和等当点滴定(一/)。由于采用 3S 瓶配器技,理化学品从未像在一安全。可以使用量模和量管元自由配置滴定,并在需要展一台拌器。在需要可以通相的件功能可平行滴定升 OMNIS Advanced Titrator。

- 通计算机或本地网控制
- 可以其他用或助溶液外接最多四个滴定模或加液模
- 可以展磁力拌器和/或螺旋拌器
- 可提供不同大小的量管:5、10、20 或 50 mL
- 采用 3S 技的瓶配器:安全理化学品,自生商的原始数据

#### 量模式和件:

- 点定滴定:“Basic” 功能可
- 点和等当点滴定(一/):“Advanced” 功能可
- 点和等当点滴定(一/),包括平行滴定
- ：“Professional” 功能可



### OMNIS Sample Robot S Pick and Place

OMNIS Sample Robot S 具有一个“蠕”模(2 通道)和一个 Pick&Place 模以及大量附件,可直接入全自滴定。此系具有个品位置,可用于 32 个 120 mL 的品。此模化系供已完全安装完,因此可在短内投入行。

系也可根据需展配外台蠕以及多加一个 Pick&Place 模,由此使通量翻倍。如果需要更多工作台,可将此 Sample Robot 展 L 格款型的 OMNIS Sample Robot,由此可使七个品的品在多四个 Pick&Place 模上并行理,将品通量大四倍。



OMNIS 滴定或滴定模的数字量通道,用于接数字“dTrodes”。



### **dSolvotrode**

用于所有非水性酸/滴定的 OMNIS 数字合式 pH。玻璃膜性差的溶液行了化,并且由于活的磨口隔膜,也用于非常的品。

此可与非水参比解(化或四乙基化)一起使用。存在相的参比解中。

dTrodes 可在 OMNIS Titratoren 上使用。