



Application Note AN-T-004

## 肉制品中的化物

### Fully automated sample preparation and analysis based on ISO 1841-2

In order to maintain product quality, the sodium chloride content in meat products must be monitored, as the limit values defined by the respective public health authorities must not be exceeded. The chloride content in food correlates with the salt content; its determination is therefore described in various norms and standards. However, preparation of meat samples is time consuming, as it requires

homogenization with a mixer and a chloride extraction with water.

In order to reduce workload and increase sample throughput, this Application Note describes a fully automatic potentiometric titration of chloride with silver nitrate in meat products based on ISO 1841-2, including fully automated sample preparation using a Polytron homogenizer.

## SAMPLE AND SAMPLE PREPARATION

The method is demonstrated for different meat products: pork sausage «Lyoner» and chicken breast with curry crust. If necessary, the spice

crust around the meat is removed and then the sample is cut into small pieces.

## EXPERIMENTAL

This analysis is carried out on an automated system consisting of an OMNIS Advanced Titrator and an OMNIS Sample Robot S equipped with a dProfitrode and a dAg-Titrode. Furthermore, a Polytron homogenizer is used for sample preparation. Water is added to a reasonable and representative amount of sample. The pH is adjusted with nitric acid to below pH 1.5. The sample is titrated with standardized silver nitrate until after the equivalence point is reached. For dip rinsing of electrodes and burets, first water, then isopropanol is used. Afterwards, the electrodes are conditioned in water for one minute before the next sample.



**Figure 1.** OMNIS Sample Robot S, OMNIS Dosing Module and OMNIS Advanced Titrator equipped with dProfitrode and dAg-Titrode for the determination of chloride content.

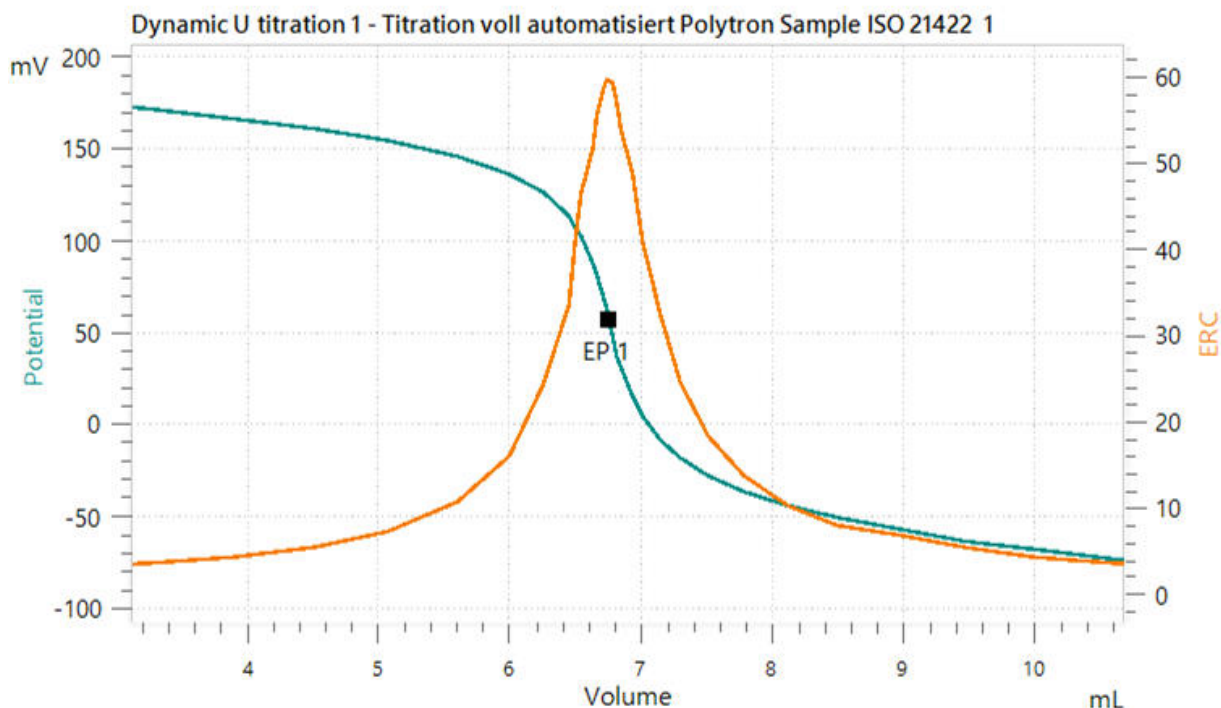
## RESULTS

The analysis demonstrates acceptable results and well-defined titration curves. The results and

an example titration curve are displayed in **Table 1** and **Figure 2**, respectively.

**Table 1.** Mean chloride content of two meat products determined with an automated OMNIS system (n = 6).

Sample	Chloride content in mg/100 g sample	SD(rel) in %
Pork sausage «Lyoner»	1175.5	1.1
Chicken breast with curry crust	1158.1	0.8



**Figure 2.** Example titration curve of the chloride determination of chicken breast.

## CONCLUSION

Titration is a precise and reliable method to determine the chloride content in meat products according to international standards, such as ISO 1841-2. Using an OMNIS Sample Robot equipped with a Polytron homogenizer allows a fully automated sample preparation and chloride content determination of up to four

samples in parallel, increasing accuracy and freeing up valuable time of the operator and thus increasing the productivity in the lab. The OMNIS system offers the opportunity to customize the system according to your needs, and expand it for other required titration applications on foodstuff.

Internal reference: AW TI CH1-1264-112018

## CONTACT

瑞士万通中国  
北京市海淀区上地路1号院  
1号楼7702  
100085 北京

marketing@metrohm.com.cn

## CONFIGURATION



### OMNIS Titrator Salt

OMNIS Titrator Salt 提供了用于量滴定的完整套件。套件包含:配有磁力拌器的 OMNIS Advanced Titrator、一个 10 mL 的量管元、一个有硝酸的滴定用的 d-AgTitrode 以及 OMNIS 件的独立可。



### Polytron PT 1300 D

Polytron PT 1300 D-Metrohm 版本均匀,可直接通 OMNIS Software, tiamo™ 或 Touch Control 行控制。  
Polytron PT 1300 D 由一个控制装置和一个装置成。通装置上的合系可便快速地更,无需外使用工具。可松粉碎固体品可。也非常用于粘性品的良好混合。