

Application Note AN-V-061

# Iron speciation in water with the Multi-Mode Electrode pro

Simultaneous determination of Fe(II) and Fe(III) in mg/L concentration levels

Various industries depend on knowing the exact concentrations of different iron species in their water. Traditional analytical methods often have difficulty to accurately distinguish between Fe(II) and Fe(III) because they have similar chemical properties. This leads to errors and incorrect data, hindering advancements in critical fields like energy generation/storage and research into chemical or electrochemical processes.

Cathodic sweeping voltammetry (CSV) overcomes these challenges and offers a robust, cost-effective, and convenient alternative to other techniques. Its ability to distinguish between ferrous and ferric iron is unparalleled. This improved accuracy enables scientists to make significant steps in technological research and industrial efficiency. In this Application Note, the Multi-Mode Electrode pro is used to simultaneously determine Fe(II) and Fe(III) in water.

## SAMPLE

Check standard solutions

## EXPERIMENTAL

Add the water sample to a vessel filled with degassed electrolyte. Use two standard additions with separate Fe(II) and Fe(III) standard solutions to perform the quantification.



Figure 1. 884 Professional VA manual for MME.

Table 1. Parameters

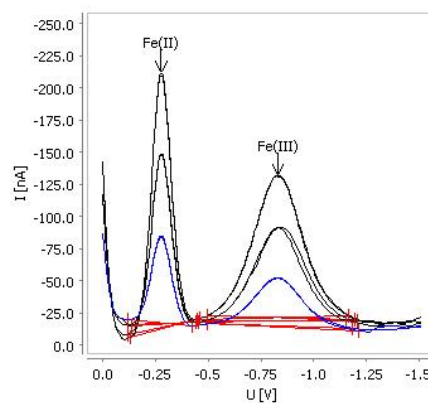
Parameter	Setting
Mode	DME
Start potential	0.0 V
End potential	-1.5 V
Sweep rate	30 mV/s
Peak potential Fe(II)	-0.25 V
Peak potential Fe(III)	-0.8 V

## ELECTRODES

- Multi-Mode Electrode pro

## RESULTS

The voltammogram shown in **Figure 2** illustrates the successful determination of Fe(II) and Fe(III) species in a solution containing 0.5 mg/L of each. The clear resolution of the two peaks demonstrates the capability of the method to differentiate and quantify Fe(II) and Fe(III) in a mixed solution.



**Figure 2.** Results of iron speciation determination in a check standard solution by CSV.

**Table 2.** Result

Sample	Fe(II) (mg/L)	Fe(III) (mg/L)
Check standard solution	0.507	0.516

## CONTACT

Metrohm Viet Nam  
Phan Dinh Giot  
70000 Ho Chi Minh

[info@metrohm.vn](mailto:info@metrohm.vn)

## CONFIGURATION



### 884 Professional VA manual for MME

884 Professional VA manual for MME is the entry-level instrument for high-end trace analysis with voltammetry and polarography with the Multi-Mode Electrode pro or the scTRACE Gold. The proven Metrohm electrode methods in combination with a completely new design of potentiostat/galvanostat and the extremely high-performance **viva** software opens up new perspectives for the determination of heavy metals. The potentiostat with a certified calibrator readjusts itself automatically before each measurement, thus guaranteeing maximum precision.

Determinations with rotating disc electrodes can also be performed with the instrument, e.g. determinations of organic additives in electroplating baths with "Cyclic Voltammetric Stripping" (CVS), "Cyclic Pulse Voltammetric Stripping" (CPVS), and chronopotentiometry (CP). The replaceable measuring head enables rapid changes between various applications with different electrodes.

The **viva** software is required for control, data acquisition, and evaluation.

The 884 Professional VA manual for MME is supplied with extensive accessories and a measuring head for the Multi-Mode Electrode pro. Electrode set and **viva** license need to be ordered separately.