



Application Note AN-V-212

Mercury in mineral water

Straightforward determination by voltammetry using a gold microwire electrode

Mercury and its compounds are toxic. The highest risk is posed by chronic poisoning with mercury compounds ingested with food. A significant part of the mercury present in the environment is of anthropogenic origin. Considerable sources are coal-fired power plants, steel, and nonferrous metal production, waste incineration plants, the chemical industry, or artisanal gold mining where the use of elemental mercury for the extraction of gold from the ore is still common. The guideline value for inorganic mercury in the World Health Organization's

«Guidelines Quality» for Drinking-water is set to 6 $\mu\text{g/L}$.

With a limit of detection (LOD) of 0.5 $\mu\text{g/L}$, anodic stripping voltammetry is a viable, less sophisticated alternative to atomic absorption spectroscopy (AAS). While AAS (and competing methods) can only be performed in a laboratory, anodic stripping voltammetry can be used conventionally in the laboratory or alternatively in the field with the 946 Portable VA Analyzer. The determination is carried out on the scTRACE Gold electrode.

SAMPLE

Bottled mineral water, spiked

EXPERIMENTAL

The scTRACE Gold is electrochemically activated and an ex situ mercury film is deposited prior to the first determination. In the next step, the water sample and the supporting electrolyte are pipetted into the measuring vessel. The determination is carried out with the 884 Professional VA or with the 946 Portable VA Analyzer using the parameters specified in **Table 1**. The concentration is determined by two additions of a standard addition solution.

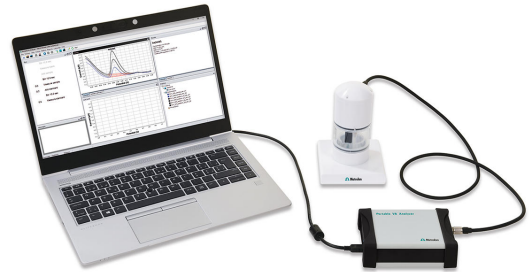


Figure 1. 946 Portable VA Analyzer (scTRACE Gold version)



Figure 2. 884 Professional VA fully automated for VA

Table 1. Parameters

Parameter	Setting
Mode	DP – Differential pulse
Deposition potential	0.3 V
Deposition time	90 s
Start potential	0.3 V
End potential	0.6 V
Peak potential Hg	0.44V

ELECTRODES

- scTRACE Gold

RESULTS

The limit of detection of the method is approximately 0.5 µg/L.

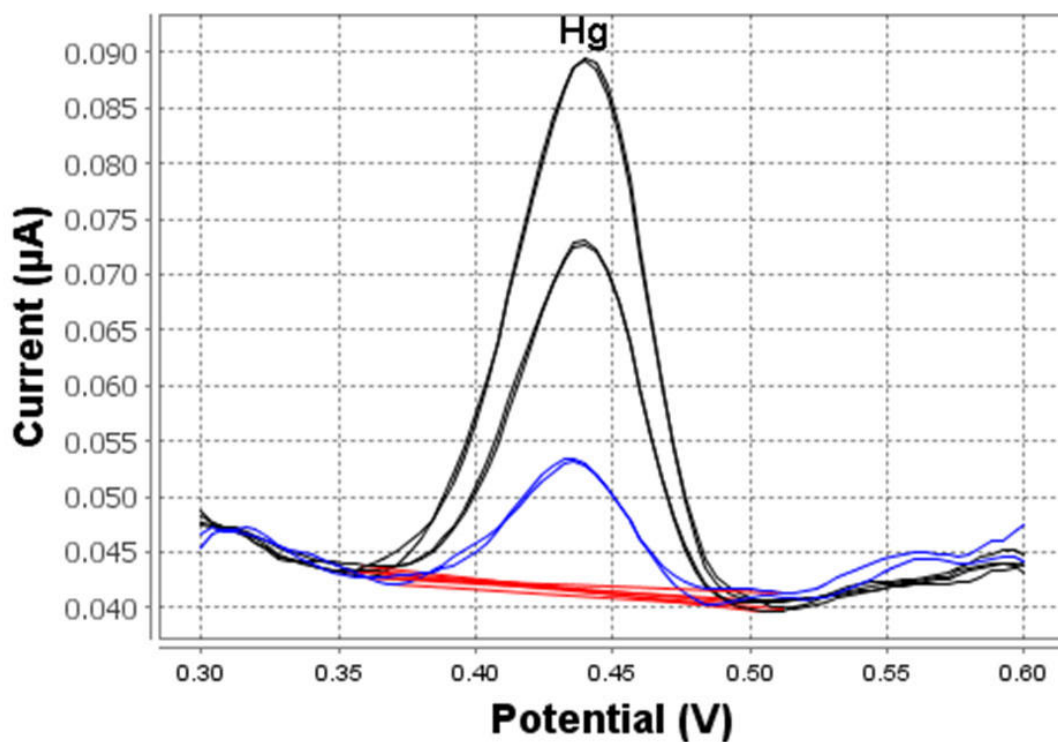


Figure 3. Determination of mercury (946 Portable VA Analyzer; 90 s deposition time)

Table 2. Results of Hg analysis in spiked bottled mineral water

Sample	Hg (µg/L)
Bottled mineral water	2.1

REFERENCES

Application Bulletin 422: [Determination of mercury in water with the scTRACE Gold](#)

CONTACT

Metrohm AG
 Ionenstrasse
 9100 Herisau

info@metrohm.com

CONFIGURATION



884 Professional VA manual for Multi-Mode Electrode (MME)

884 Professional VA manual for Multi-Mode Electrode (MME) is the entry-level instrument for high-end trace analysis with voltammetry and polarography with the Multi-Mode Electrode pro or the scTRACE Gold or the Bismuth drop electrode. The proven Metrohm electrode methods in combination with a high-performance potentiostat/galvanostat and the extremely flexible viva software open up new perspectives for the determination of heavy metals. The potentiostat with a certified calibrator readjusts itself automatically before each measurement, thus guaranteeing maximum precision.

Determinations with rotating disc electrodes can also be performed with the instrument, e.g. determinations of organic additives in electroplating baths with "Cyclic Voltammetric Stripping" (CVS), "Cyclic Pulse Voltammetric Stripping" (CPVS), and chronopotentiometry (CP). The replaceable measuring head enables rapid changes between the various applications with different electrodes.

The **viva** software is required for control, data collection, and evaluation.

The 884 Professional VA manual for MME is supplied with extensive accessories and a measuring head for the Multi-Mode Electrode pro. Electrode set and **viva** license need to be ordered separately.



VA electrode equipment with scTRACE Gold for Professional VA instruments

Complete electrode set for the determination of arsenic or mercury. Includes holders for scTRACE Gold, scTRACE Gold, stirrer and measuring vessel.



946 Portable VA Analyzer (scTRACE Gold)

Portable metal analyzer for the determination of heavy metals such as arsenic, mercury, copper, lead, zinc, nickel, cobalt, iron, bismuth or antimony in the trace range. Instrument version for the scTRACE Gold. The system is comprised of potentiostat and separate measuring stand with integrated stirrer and replaceable electrode. The instrument is operated with the Portable VA Analyzer software. The power is supplied via the USB connector and via the integrated rechargeable battery. The instrument is supplied with all required accessories in a carrying case.