



Application Note AN-PAN-1043

Online trace analysis of cations in the primary circuit of nuclear power plants

In power plants, corrosion is the primary factor leading to costly and critical downtimes. Pressurized water reactors (PWR) are generally designed with a third water circuit in addition to the two found in other thermal power plants (e.g., boiling water reactors (BWRs) or coal-fired and geothermal power plants). In this so-called «primary circuit», the primary coolant water is

pumped under high pressure to absorb heat generated by nuclear fission, further transferring this heat to the secondary circuit. The PWR ensures that radioactive materials remain contained and do not disperse to the secondary circuit and therefore potentially to the environment.

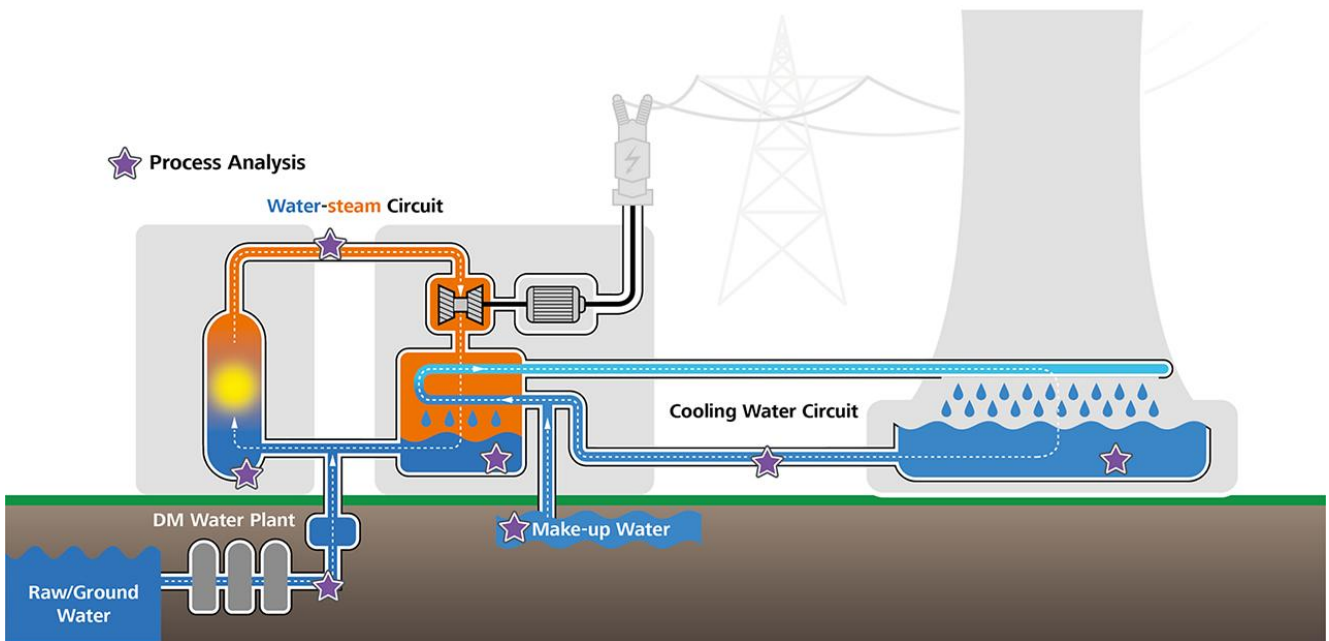


Figure 1. Diagram of a 3-water circuit nuclear power plant with stars noting areas where online process analysis can be integrated into the system.

This additional water circuit entails some specific requirements regarding chemical analysis and monitoring. In the PWR, light water is used as primary coolant. Boron (as boric acid, H_3BO_3) readily absorbs neutrons and is added to the coolant to control reactivity. Additions of monoisotopic lithium hydroxide (LiOH) to the primary circuit assures a pH value greater than 7 to prevent corrosion. **Lithium** is therefore a critical parameter to monitor in PWRs.

Nickel is an important alloying metal that increases the corrosion resistance of steel.

However, in the dissolved form, nickel promotes corrosion, making regular checks of the Ni^{2+} concentration necessary.

In addition, metals released by corrosion undergo nuclear reactions and thus increase radiation in the power plant. To limit corrosion of the materials and to prevent the formation of radioactive products, the water is often treated with depleted zinc oxide. The **zinc** concentration must be monitored as well to ensure radioactivity does not spread.

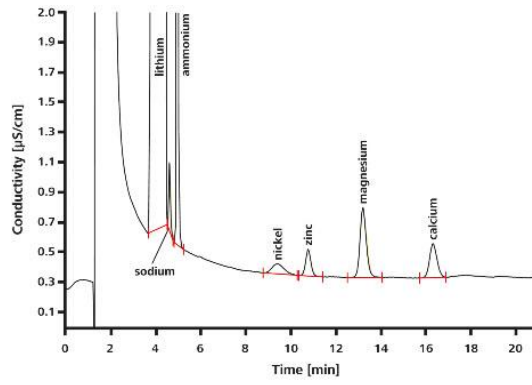


Figure 2. Simulated sample from the primary circuit of a pressurized water reactor containing 2 g/L H_3BO_3 and 3.3 mg/L LiOH spiked with 2 $\mu\text{g/L}$ nickel, zinc, calcium, and magnesium; preconcentration volume: 1000 μL .

APPLICATION

These cations and more can be determined down to the sub- $\mu\text{g/L}$ range in a single analysis using ion chromatography. However, precise, reliable trace analysis requires the method to be automated as much as possible. Metrohm Process Analytics offers a complete solution for this task: the **2060 Ion Chromatograph (IC) Process Analyzer** featuring combined Inline Preconcentration and Inline Matrix Elimination. With one injection, the 2060 IC Process Analyzer is able to measure numerous ionic compounds in aqueous media from ng/L to % concentrations. The analysis system is fed directly and continuously with samples via a bypass in the process. Automatic calibration guarantees excellent detection limits, a high reproducibility, and excellent recovery rates.

The 2060 IC Process Analyzer provides alarms if preset warning or intervention concentration limits are reached, helping to save costs by preventing irreparable damage due to corrosion. The 2060 IC Process Analyzer can monitor both anions and cations with a single ion chromatograph and two detector blocks, giving a comprehensive overview of the water circuit chemistry. The possibility to connect one analyzer to up to 20 sample streams means multiple areas within water-steam circuits in a power plant can be monitored by a single instrument. With a built-in eluent production module and optional PURELAB® flex 5/6 from ELGA® for pressureless ultrapure water, the 2060 IC Process Analyzer can be configured to run trace anion analyses autonomously for up to several weeks.

The analysis is carried out fully automatically using a combination of Inline Matrix Elimination (for the H_3BO_3) and Inline Neutralization (for the LiOH). Analyte detection is by conductivity.



Figure 3. The 2060 IC Process Analyzer is available with either one or two measurement channels, along with integrated liquid handling modules and several automated sample preparation options.

BENEFITS FOR IC IN PROCESS

- **Inline eluent preparation** ensures consistently stable baselines
- Protect valuable **company assets** (e.g. pipes, PWR, and turbines, which are prone to corrosion)
- **Safe working environment** and automated sampling)
- **High precision analyses** for a wide spectrum of analytes with multiple types of detectors



FURTHER READING

Related application notes

[Copper, nickel, zinc, and common cations in the water-steam cycle of a boiling water reactor \(BWR\)](#)

[Zinc, nickel, calcium, and magnesium in borated water of a pressurized water reactor \(PWR\)](#)

[Lithium in borated water of a pressurized water reactor \(PWR\)](#)

[Online analysis of trace cations in power plant water matrices](#)

Other related documents

[8.000.6072EN Trace-level determination of cations in the secondary circuit of a PWR-type](#)

[nuclear power plant using ion chromatography after inline sample preparation](#)

CONTACT

メトロームジャパン株式会社
143-0006 東京都大田区平
和島6-1-1
null 東京流通センター アネ
ックス9階

metrohm.jp@metrohm.jp

CONFIGURATION



2060 IC Process Analyzer

Metrohm Process Analytics製の2060 Ion Chromatograph (IC) Process Analyzerは、モジュラー2060プラットフォームコンセプトに基づいたものです。このモジュラーアーキテクチャにより、フロント周辺の様々な箇所におけるキャビネットの分離、ならびにフロント内部の複数のエリアにおける、時間を節約する連続的な分析のための最高20までのサンプル流との接続が可能になります。

このアナライザーには、ハードウェア、ソフトウェア、ならびにアプリケーションのカスタマイズにおいて限界がありません。連続的な溶離液製造モジュールから、サンプルコンティニュウムのための湿部モジュール、また複数のIC検出器ブロックに至るまで、2060 IC Process Analyzerはあらゆる産業アプリケーションのための全てのオプションを有しています。

2060ソフトウェアは、異なる操作メソッド、タイムシート、およびトレンドチャートを有する、ルーチン分析を実行するためにアナライザーをコントロールする「オールインワン」のソフトウェアソリューションです。くわえて、プロセスコミュニケーションプロトコルの多様性のおかげで（例えばModbusまたはDiscrete I/Oなど）、2060ソフトウェアは自動フィードバックを送信するフロクラミンクが可能で、プロセスに警告を発し、必要であればアクションを起こします（例えばサンプルの再測定、または洗浄サイクルの開始など）。これら全ての特徴が、産業プロセスの完全自動診断を24時間365日保証します。