



Application Note AN-P-088

Quality testing for infant formula

Fast and reliable low level lactose determination with IC-PAD

Lactose, a disaccharide made of glucose and galactose, is present in milk and milk products. As the major carbohydrate in human milk (55–70 g/L), it is also a main component of infant formulas with minimum recommendations of 4.5 g/100 kcal [1]. Analytically, such high concentrations can easily be determined by multi-component methods such as ISO 22184 or lower sensitivity methods like refractive index detection. In some cases, infants can suffer from lactose malabsorption. Here, the lactase enzymatic activity is either limited or absent from birth, impairing lactose metabolism. The lactose cannot be hydrolyzed into glucose and galactose in the small intestine, impeding the absorption of

digestible carbohydrates as monosaccharides. Consequently, numerous gastrointestinal and extra-intestinal symptoms and complaints appear (e.g. diarrhea) [1–3]. Glucose-galactose malabsorption also affects a very small subset of the population. For all malabsorption types, it is critical to eliminate any dietary sources of lactose. Lactose-free nutritional sources are especially crucial for infants, and these foodstuffs must properly meet the regulation requirements (lactose <10 mg/100 kcal) [1,3–5]. To analyze such **low lactose contents** in complex matrices like infant formula, **ion chromatography with pulsed amperometric detection (IC-PAD)** offers a robust and sensitive solution.

SAMPLES AND SAMPLE PREPARATION

Lactose determination was performed for a broad spectrum of low lactose sample matrices, comprised of infant formulas and follow-up baby food such as the reference materials NIST 2383a (baby food composite) and NIST 1869 (infant formula powder), an infant formula from HiPP (HiPP comfort, lactose reduced), and a commercially available lactose-free milk (1.5% fat, Spar Switzerland).

Powdered and liquid materials were homogenized and weighed directly into suitable containers (from 0.1–5 g, 50 mL polypropylene centrifuge tubes). The sample weight (W_S in g) was recorded to the nearest 0.001 g for later calculations. An aqueous extract was prepared by adding ultrapure water (UPW) to result in a total volume of 50 mL (W_{UPW} in kg). Afterwards, the vials were capped and mixed vigorously with a vortex mixer for approximately 20 seconds.

Carrez precipitation is a standard method to

remove proteins and larger molecules from samples in order to protect the analytical system. Following this common practice, the reagents were added, and the final weight noted (W_{UPWC} in kg). After thorough mixing, the samples were centrifuged ($5000 \times g$) for 10 minutes and decanted. The covered vials were placed directly into the autosampler. Increased column protection can be secured by an additional ultrafiltration step.

As an alternative, automated sample preparation by Inline Dialysis with a Low Volume dialysis cell is recommended. For that, samples were prepared identically to the aqueous extracts, shaken well, and covered before placing on the autosampler rack. For dialysis, no Carrez precipitation is necessary prior to the analysis, saving time and chemical reagents. Using the Low Volume dialysis cell requires only 5 mL of sample.

EXPERIMENTAL

The quantity of lactose in aqueous sample extracts was determined by ion chromatography (IC) on a **Metrosep Carb 2 - 250/4.0** column using an isocratic hydroxide eluent (400 mmol/L NaOH) and pulsed amperometric detection (PAD) with the sweep waveform (**Figure 1**).

Together with the **Metrohm Thin-Layer amperometric cell** (Au working and Pd reference electrode), a long electrode lifetime with minimal maintenance is obtainable. The sweep mode combined with less turbulent flow in the Thin-Layer cell results in a smooth baseline, a necessary precondition to analyze very low concentrations such as in low lactose products. Flow schemes for direct analysis and analysis after Metrohm Inline Dialysis are shown in **Figure 2**. Although the setup for the dialysis may look more complex, automation makes the effort worthwhile for the overall analytical process.

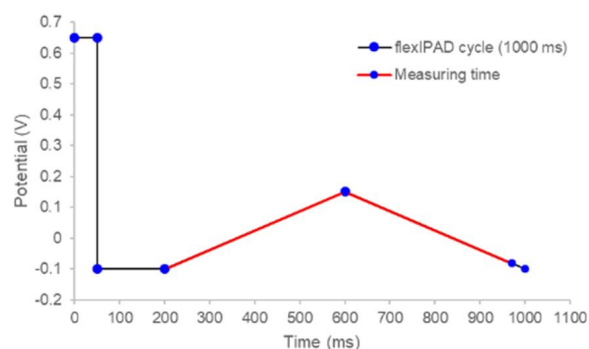


Figure 1. The sweep waveform for carbohydrate oxidation supports sensitive detection of carbohydrates with a low noise level.

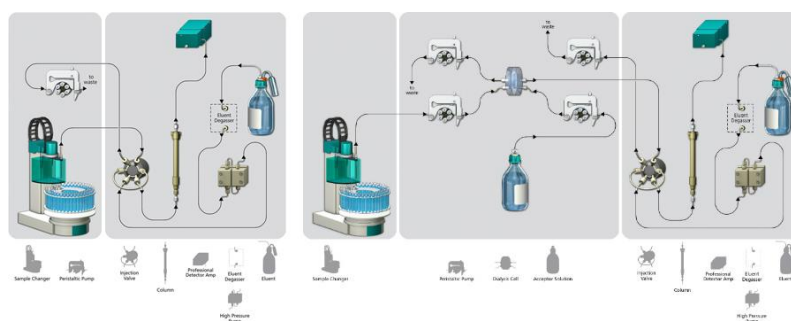


Figure 2. Example system configuration for direct lactose analysis (left, sample preparation mandatory as for example Carrez precipitation) and with optional dialysis (right, no additional sample preparation necessary). Inline Dialysis is optional and can be added to any existing instrumentation setup. For Carrez precipitation the sample path goes directly from the autosampler into the sample loop (PEEK, 10 μ L). Sample transport occurs by peristaltic pump. From the sample loop, the sample is directly injected onto the column (Metrosep Carb 2 - 250/4.0), where it is eluted with a 400 mmol/L NaOH isocratic eluent before pulsed amperometric detection (PAD).

RESULTS AND DISCUSSION

Lactose elutes in under 20 minutes (**Figure 3**), independent of whether direct injection or Inline Dialysis is used. In contrast to previously published chromatographic methods, lactose derivatives (i.e., epilactose, lactulose, allolactose, and galactosyllactose), as from prebiotic additives, were successfully separated from lactose, increasing the selectivity and accuracy of the method. The overall working range of the

method is 0.05 to 80 mg/L for liquid lactose standards, with the ability to analyze samples in a range of 0.2–21,000 mg/100g with respective dilution. The sample concentrations are determined from a linear calibration ($c(\text{Lactose})_S$ in mg/kg) and are calculated based on the sample weight to give the final lactose content ($c(\text{Lactose})_{FIN}$ in g/100 g):

$$c(\text{Lactose})_{FIN} = \frac{100 \times c(\text{Lactose})_S \times W_{UPW/UPWc}}{1000 \times W_S}$$

Validation results are shown for infant formula, baby food, and milk (**Table 1**). These display the compliance with the overall acceptance criteria of AOAC for a full single laboratory validation (RSD_r and variability 10% and 7%, spike recoveries 85–115% and 90–110% for an analytical range of 10–100 mg/100 g and >100 mg/100 g, respectively).

The results obtained for the analysis using Carrez precipitation prior to injection (**Table 1**) and using Inline Dialysis were comparable for selected test samples analyzed as shown in **Figure 3**. The data give an excellent verification for using Inline Dialysis as a time efficient alternative to Carrez precipitation.

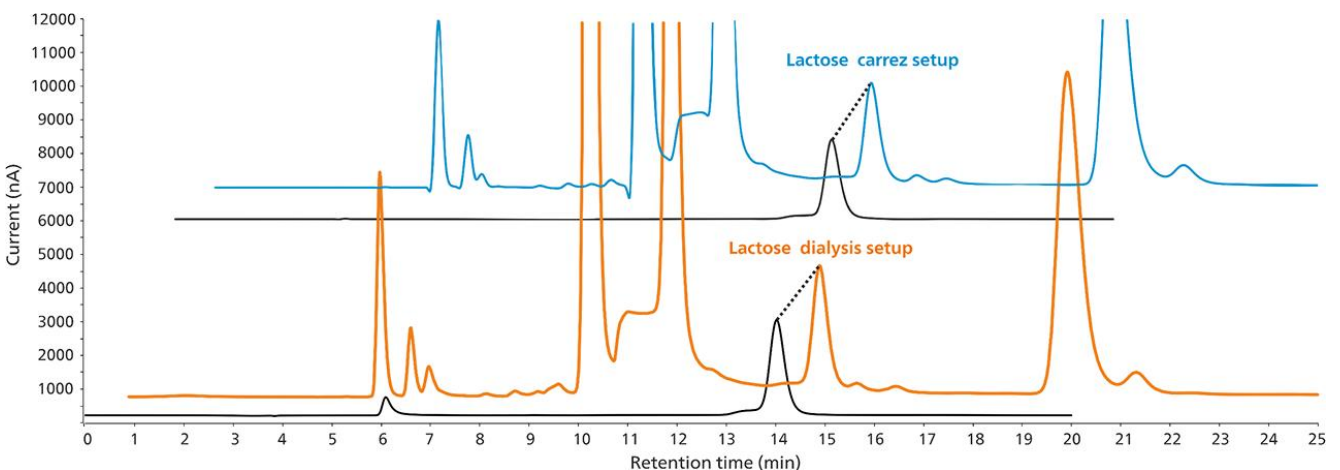


Figure 3. Lactose determination in baby food (NIST 2383a). Comparison of two sample preparation methods: Inline Dialysis ($c(\text{lactose}) = 51.1$ mg/L, orange) and Carrez precipitation ($c(\text{lactose}) = 49.6$ mg/L, blue). The relative standard deviation of the two samples is 2.1%. For comparison, a 40 mg/L lactose standard (black) is overlaid.

Table 1. Lactose expressed as lactose monohydrate (conversion factor 1.05) in lactose-free infant formula and milk samples determined after sample preparation by Carrez precipitation. The table shows the repeatability R_r as RSD from individually prepared samples measured within a short time period ($n = 7$), the day-to-day variability as RSD over individual prepared samples measured on different days (4–8 d), and spike recovery as the average of all spike experiments analyzed over several days.

Repeatability (mg/100 g) (RSD _r , %)	Day-to-day variability (mg/100g) (%)	Total spike recovery (%)
NIST 2383a infant food (average 520 ± 27 mg/100 g ($n = 7$), target 500 ± 100 mg/100 g, recovery 106 ± 6%)		
520 ± 27 (5.1)	528 ± 29 (5.5)	103 ± 2
NIST 1869 infant formula powder (average 569 ± 33 mg/100 g ($n = 7$), target 520 ± 120 mg/100 g, target recovery 109 ± 6%)		
569 ± 33 (5.5)	523 ± 31 (5.9)	98 ± 3
HiPP Comfort infant formula (20.8 g/100 g ($n = 7$), target 22.1 g/100 g, target recovery 97 ± 4%)		
20751 ± 743 (3.6)	22163 ± 258 (1.2)	102 ± 3
Sparaha 1.5% fat, lactose-free milk		
2.35 ± 0.18 (7.9)	2.10 ± 0.05 (2.2)	111 ± 2

CONCLUSION

Infant formula is a very complex and challenging matrix as it contains all kinds of nutrients (e.g., proteins, fats, carbohydrates, vitamins, and minerals). Dedicated sample preparation and analysis methods are needed to guarantee high accuracy, sensitivity, and selectivity for the determination of low lactose concentrations. IC-PAD overcomes such analytical challenges with [automated inline sample preparation](#) options and results in excellent separation of lactose from other matrix components and lactose derivatives.

The estimated LOQ of 4 mg lactose/100 g in these sample matrices is lower than the requirements and known thresholds for lactose-free infant formula products. Thus, adequate sensitivity and robustness as shown by long-term analysis and spike experiments is given by this method. Additionally, the flexibility for user adapted applications, optional sample preparation, and/or automation make IC-PAD ideal for routine analytics and a highly valuable addition to the laboratory analytical portfolio.

REFERENCES

1. EFSA. Scientific Opinion: Essential Composition of Infant and Follow-up Formulae. *Eur. Food Saf. Auth. EFSA J.* **2014**, 12 (7), 3760.
2. Facioni, M. S.; Raspini, B.; Pivari, F.; Dogliotti, E.; Cena, H. Nutritional Management of Lactose Intolerance: The Importance of Diet and Food Labelling. *J. Transl. Med.* **2020**, 18 (1), 260.
3. EFSA. Scientific Opinion on Lactose Thresholds in Lactose Intolerance and Galactosaemia. *Eur. Food Saf. Auth. EFSA J.* **2010**, 8 (9), 1777.
4. European Commission. Commission Delegated Regulation (EU) 2016/127 of 25 September 2015 Supplementing Regulation (EU) No 609/2013 of the European Parliament and of the Council as Regards the Specific Compositional and Information Requirements for Infant Formula and Follow-on Formula and as Regards Requirements on Information Relating to Infant and Young Child Feeding. *Off. J. Eur. Union* **2016**, 29.
5. FAO/WHO. CODEX Alimentarius - General Standard for the Labelling of Prepacked Foods CXS 1-1985. *Int. Food Stand.*

Internal reference: AW IC CH6-1435-022021

CONTACT

メトロームジャパン株式会社
143-0006 東京都大田区平
和島6-1-1
null 東京流通センター アネ
ックス9階

metrohm.jp@metrohm.jp

CONFIGURATION



940 Professional IC Vario ONE/Prep 1

940 プロフェッショナル IC Vario ONE/Prep 1 はインラインウルトラフィルタレーションやインライン透析などといったメトロームインラインサンプル前処理のコンビネーションによるサフレクション無しのインテリシエントコンハクトIC装置です。この装置は任意の分離メソッドおよび検出メソッドによって使用することかできます。

典型的な使用領域:

- インラインウルトラフィルタレーションもしくはインライン透析後のサフレクション無しの陰イオンおよび陽イオンの測定
- インラインウルトラフィルタレーションもしくはインライン透析後のUV/VIS使用
- インラインウルトラフィルタレーションもしくはインライン透析後のアンヘロメトリック検出器による使用



945 Professional Detector Vario – Amperometry

ICアンヘロメトリック検出器が装備されたインテリシエントスタントアローン検出器です。4つの測定モードによる優れた選択性が特長です: DC、PAD、flexIPAD、CV。抜群の信号対雑音比および非常に高速の測定可能準備状態により高精度の測定が保証されます。インテリシエントIC装置と、または独立した検出器として使用できます。



Metrosep Carb 2 - 250/4.0

ICカラムMetrosep Carb 2 - 250/4.0は、アルカリ性溶離液およびハルスアンヘロメトリー検出を用いた炭水化物の測定に特に適しています。大容量の陰イオン交換カラムは、スチロール/シヒニルヘンセン共重合体をベースとしています。これはpH = 0~14の範囲で安定しており、単糖類および二糖類を分離します。さらに、数種の糖アルコール、無水糖、アミノ糖などの分析にも適しています。Metrosep Carb 2分離カラムの250mmのハーシオンは、複雑な分離のために最適化されています。



858 Professional Sample Processor – Pump

858 フロフェッショナルサンプルプロセッサ - ホンプは、500 μ Lから500 mLまでのサンプルを処理します。サンプルは内蔵式双方向性の2チャンネルのヘリスタリックホンプまたは800 トシーノ電動ヒュレットによって転送されます。



IC: Low Volume

高速インライン透析のための付属品セット。858 Professional Sample Processorおよび追加の2チャンネルタイプのヘリスタリックホンプとの使用に。



IC: Carb (AuPd)

追加の付属品を含む薄層セルから構成される機器、金作用電極ならびにハラシウム参照電極による炭水化物分析のための電極付き。



MagIC Net 4.0 Professional: 1

すべてのインテリジェントなProfessional ICシステム、コンパクトなIC装置とそれらの周辺機器、すべての検出器と様々なオートサンフラー、800 Dosino、771 Compact InterfaceなどのコントロールのためのプロフェッショナルなPCプログラム。このソフトウェアにより、イオンクロマトグラフィー分析のチェック、データ記録、評価・モニタリングとレポートの作成が可能となります。

ルーチンオペレーションのためのグラフィック ユーザーインターフェース、広範なデータヘース プログラム、メソッド開発、コンフィグレーションならびに手動のシステム制御; 非常にフレキシブルなユーザー管理、高性能なデータヘース オペレーション、広範なデータエクスポート機能、独自設定可能なレポート作成機能、全システム コンホーネットおよびクロマトグラフィー結果のコントロールおよびモニタリング。

MagIC Net ProfessionalはFDA規定21 CFR Part 11およびGLPに完全に準拠しています。

MagIC Net は16のタイアロク言語で使用可能です: ドイツ語、英語、中国語 (繁体、簡体)、フランス語、イタリア語、スペイン語、ホルトカル語、フルカリア語、チェコ語、ハンカリー語、日本語、韓国語、ロシア語、スロハキア語、ホーランド語

1ライセンス

インストールファイルと文書は 1 つの USB スティックに保存され、納品されます。