

Application Note AN-EIS-004

# Electrochemical Impedance Spectroscopy

## Part 4 – Equivalent circuit models

The circuit elements which are described in Application Note AN-EIS-003 can be combined in series and in parallel to build equivalent circuit models which can then be used to model the various phenomena occurring at the electrochemical interface.

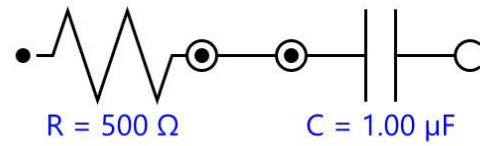
This seven-part series introduces EIS and covers basic theory, experimental setups, common equivalent

circuits used for fitting data, and tips for improving the quality of the measured data and fitting. This Application Note (part 4) provides example equivalent circuit models produced from the elements discussed in part 3. These models are among the most commonly encountered within electrochemistry research. The associated Nyquist plot is also shown for each model discussed.

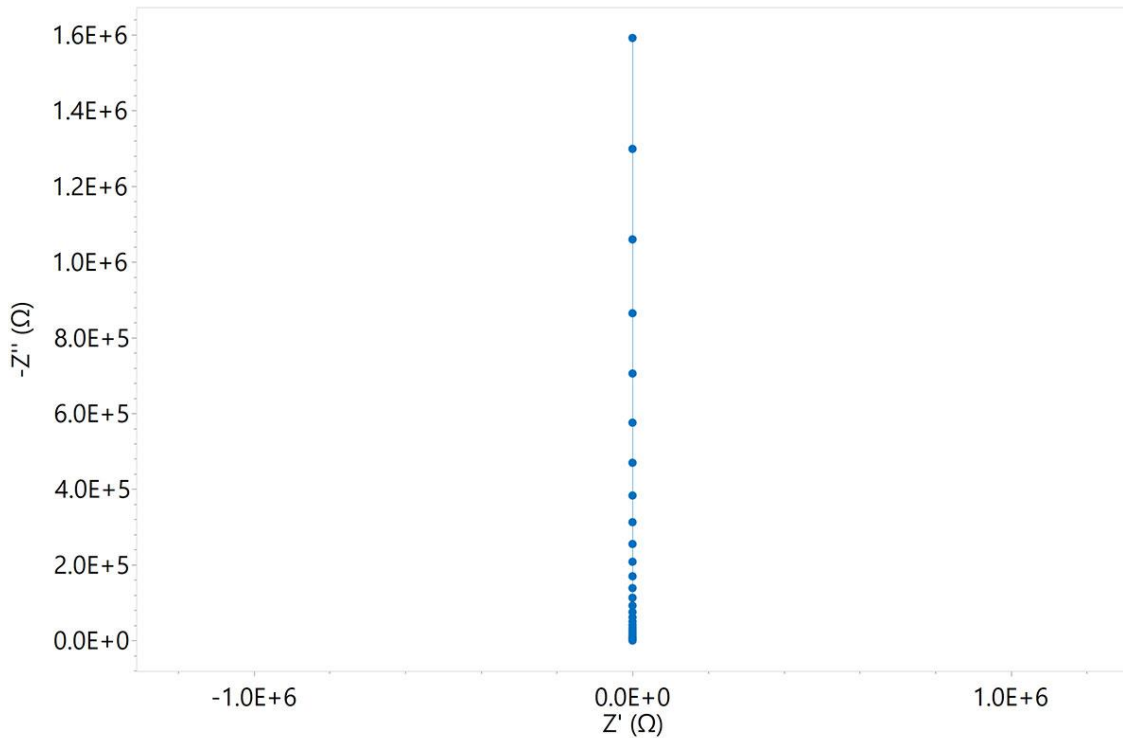
## MODEL 1 – A RESISTOR AND CAPACITOR IN SERIES

Model 1 (Figure 1) can be used, for example, to model a metal with an undamaged high-impedance coating. It can also be used to determine the double layer capacitance of a system if no faradaic reaction is occurring at the DC potential where it is measured. Here, the value of R gives the resistance of the electrolyte, and the value of C gives the coating capacitance.

In Figure 2, the resulting Nyquist plot is shown. It consists of a straight (capacitor) line at a value on the x-axis that corresponds to the resistance of the resistor in the circuit.



**Figure 1.** Equivalent circuit diagram for an RC (Resistor-Capacitor) circuit in series.



**Figure 2.** Nyquist plot of a typical RC circuit.

## MODEL 2 – A RESISTOR, CAPACITOR, AND AN INDUCTOR IN SERIES

Model 2 (Figure 3) could be used to model the response of a supercapacitor. Here, the value of R gives the internal resistance of the supercapacitor, and the value of C gives the capacitance value of the supercapacitor, while L can be attributed to the cable's inductance.

In Figure 4, the resulting Nyquist plot is shown. As introduced in the preceding Application Note ([AN-EIS-003](#)), this type of induction produces negative values for the imaginary impedance in the high frequency region of the plot.

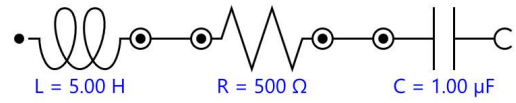


Figure 3. Equivalent circuit diagram for an RCL circuit.

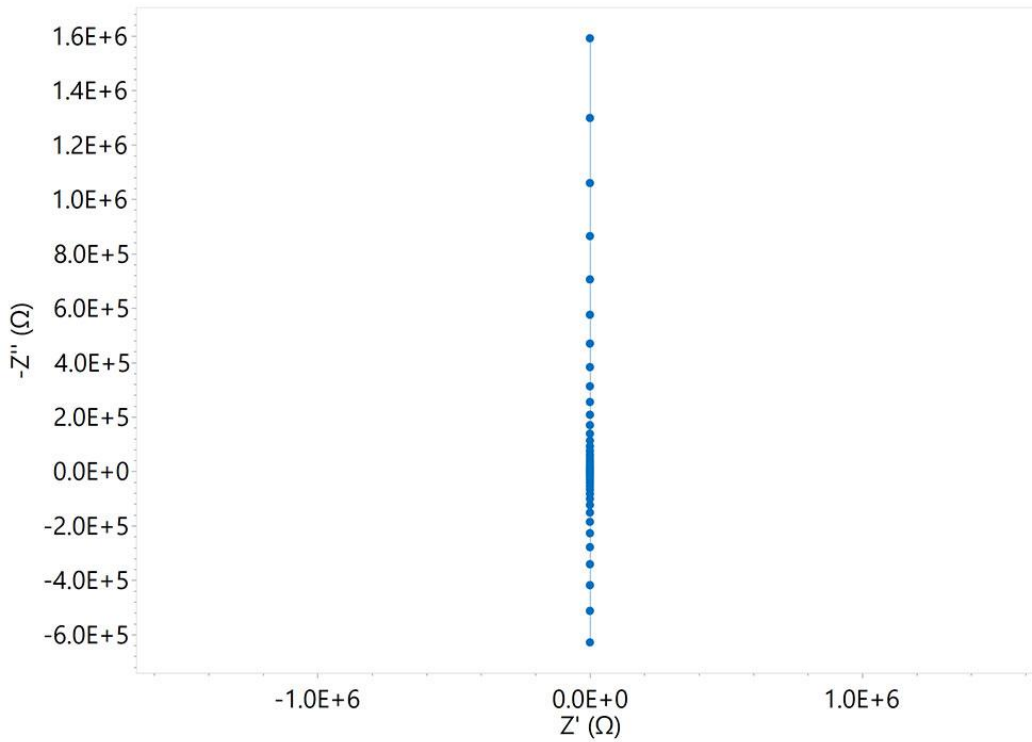


Figure 4. Nyquist plot of a typical Resistor-Capacitor-Inductor (RCL) circuit.

### MODEL 3 – A RESISTOR AND CAPACITOR IN PARALLEL (SIMPLEST EXAMPLE OF A RANDES CIRCUIT)

The Randles circuit (Figure 5) is one of the simplest and most common models for a three-electrode cell. It includes a solution resistance ( $R_{\Omega}$ ), either a double layer capacitor C or a Constant Phase Element (CPE), and a generic element for the faradaic impedance, due to the electrochemical processes. In the simplest case of the Randles circuit, the faradaic impedance is solely the charge-transfer resistance  $R_{ct}$ . It is often the starting point for other more complex models.

In Figure 6, a typical Nyquist plot resulting from the equivalent circuit of Model 3 is shown. The blue dots represent the Nyquist plot of the equivalent circuit with the capacitor, while the red dots represent the Nyquist plot of the equivalent circuit with a CPE ( $n = 0.8$ ). The general recommendation is usually to use a CPE to account for any non-ideality in the capacitance of the system. Of course, there are exceptions to this. It is important to remember to use the circuit which makes the most sense in reality as opposed to the one that gives the best mathematical fit (see more in [AN-EIS-005](#)).

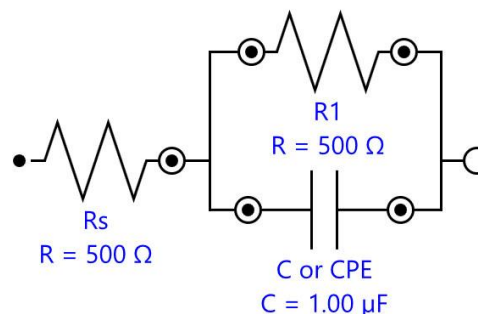
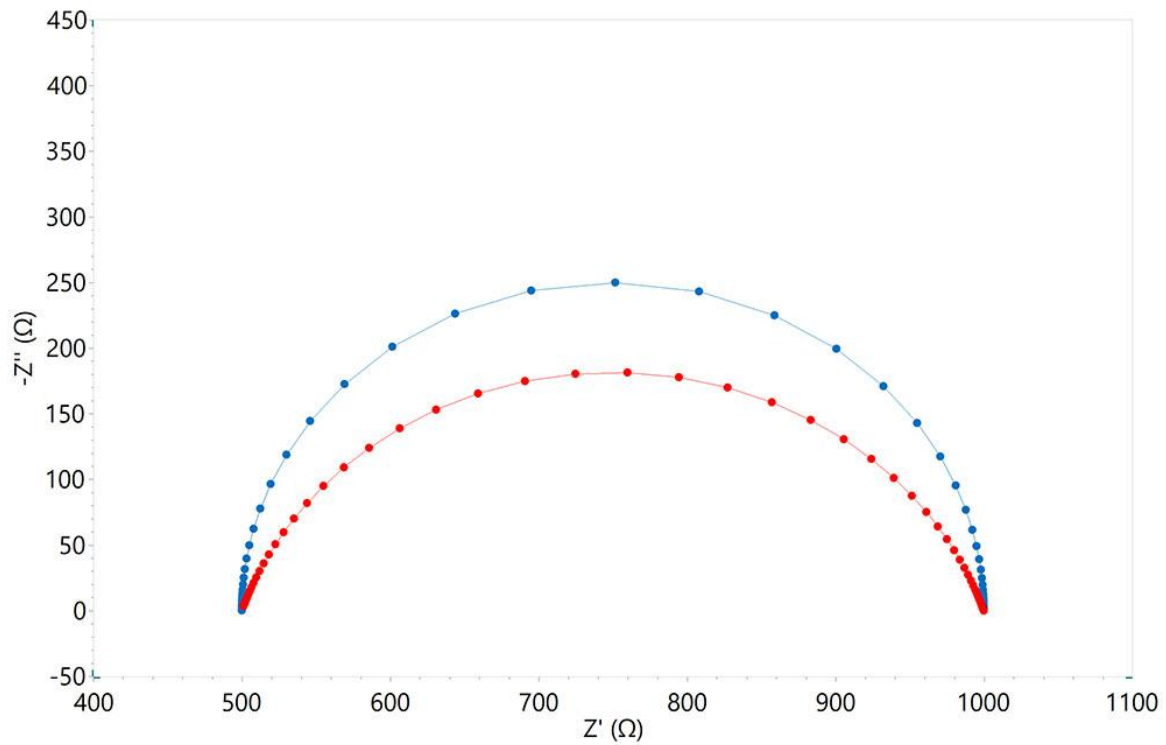


Figure 5. Equivalent circuit diagram for an RC circuit in parallel.

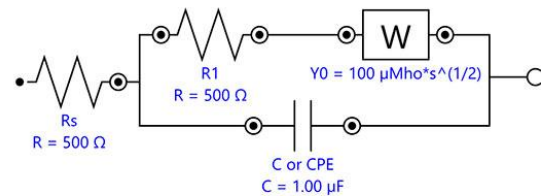


**Figure 6.** Nyquist plot resulting from the equivalent circuit in Model 3. The blue dots represent the results with the capacitor, the red dots represent the results with a CPE ( $n = 0.8$ ).

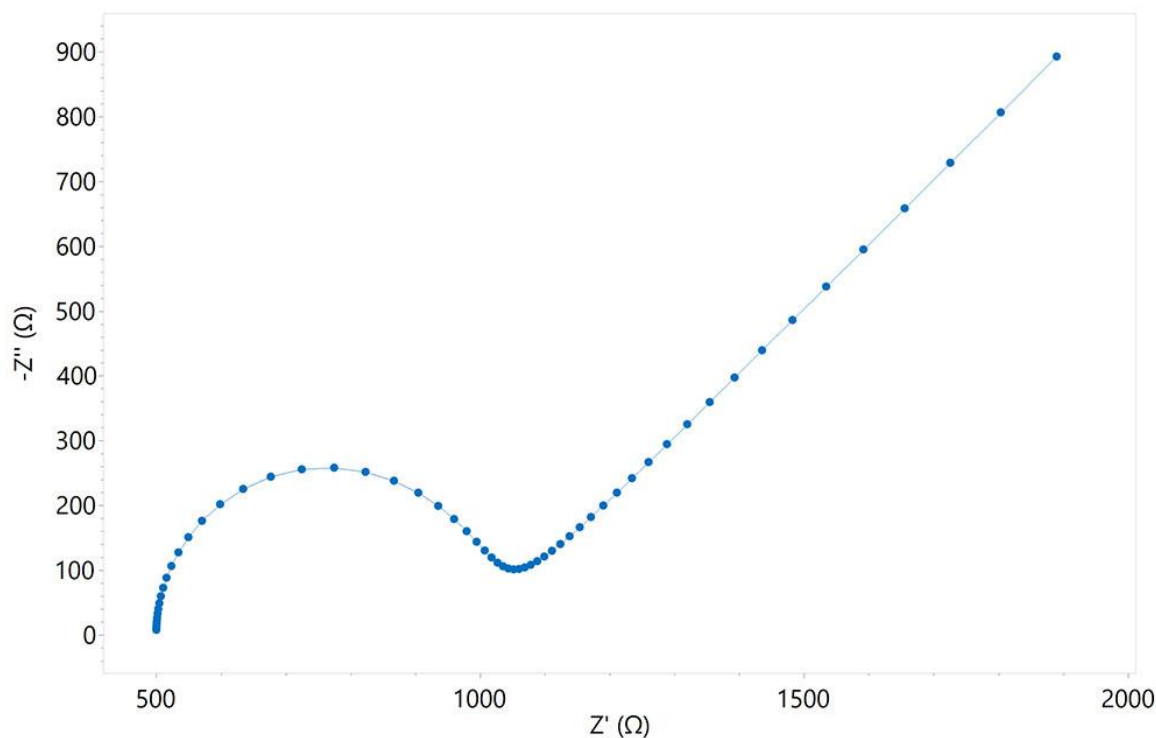
## MODEL 4 – MIXED KINETIC AND DIFFUSION CONTROL

The Randles circuit can be easily modified to also describe electrode processes where both kinetics and diffusion play a role (Figure 7). Model 4 includes a solution resistance ( $R_{\Omega}$ ), a double layer capacitor C (or a CPE), the charge-transfer resistance, and a Warburg element,  $Z_{WAR}$ , which contains information about the diffusion coefficient for a species undergoing semi-infinite diffusion. Read [AN-EIS-003](#) for more information about the Warburg element.

In Figure 8, a typical Nyquist plot resulting from the equivalent circuit in Model 4 is shown.



**Figure 7.** Equivalent circuit diagram for describing a system under mixed kinetic and diffusion control.

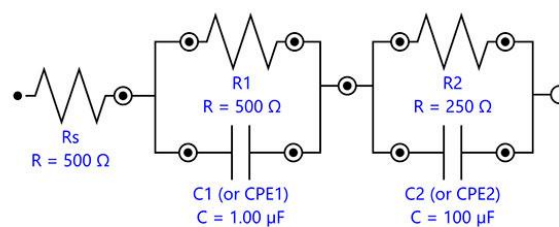


**Figure 8.** Nyquist plot of a system under mixed kinetic and diffusion control.

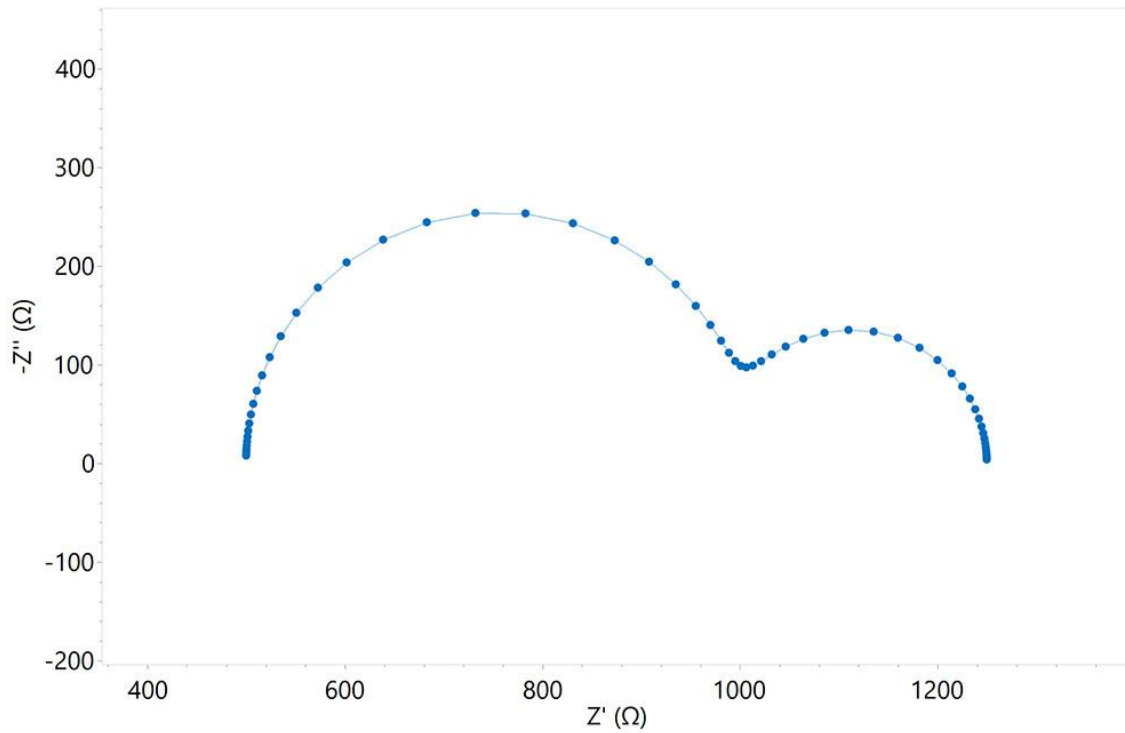
## MODEL 5 – TWO Randles CIRCUITS IN SERIES

Model 5 can be used, for example, to model the response of batteries (Figure 9) or EC reactions involving adsorbed species (in this case, C2 or CPE2 is referred to as the adsorption capacitance). Here, each R and C (or CPE) in parallel can represent one electrode of the battery.

In Figure 10, a typical Nyquist plot is shown resulting from the equivalent circuit in Model 5.



**Figure 9.** Equivalent circuit diagram for two Randles circuits in series.

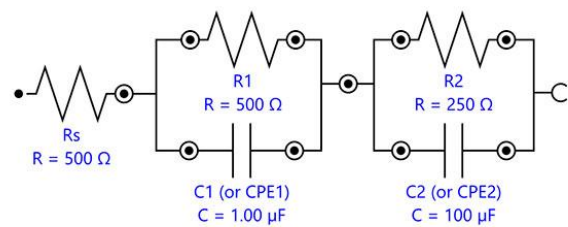


**Figure 10.** Nyquist plot produced from the equivalent circuit in Model 5.

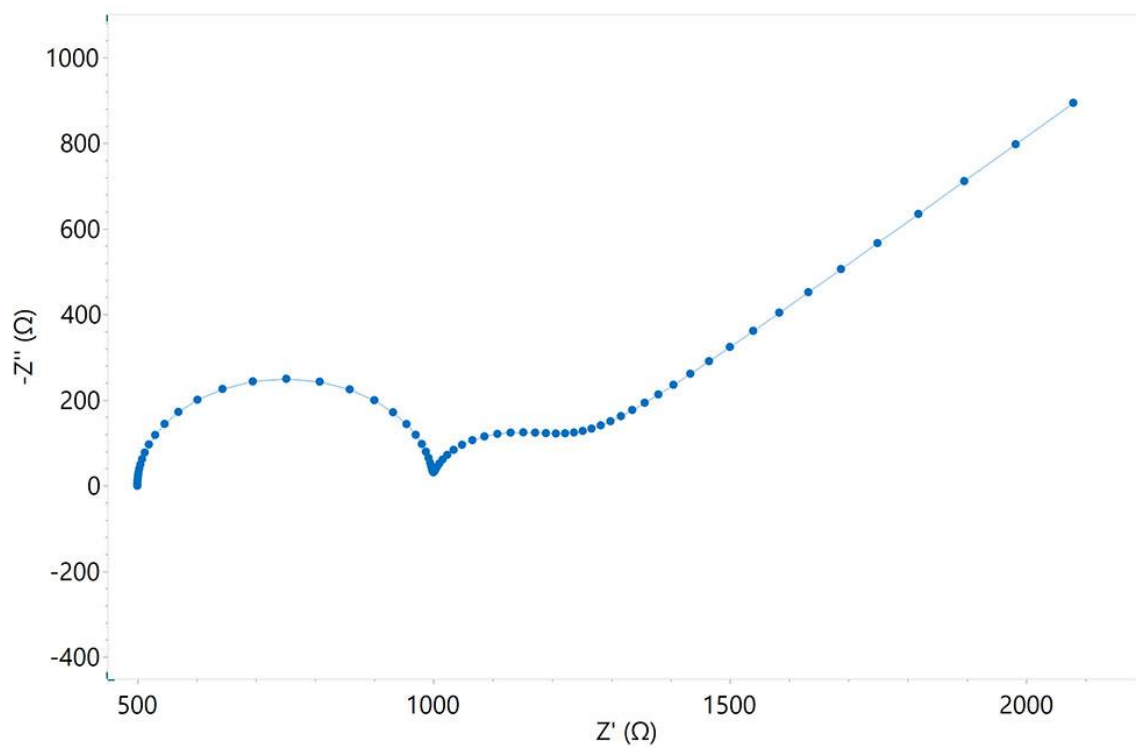
## MODEL 6 – EXAMPLE OF A COMPLEX CIRCUIT

Model 6 (Figure 11) can be used, for example, to describe the impedance of an organic coating on a metal substrate in contact with an electrolyte.

In Figure 12, a typical Nyquist plot is shown resulting from the equivalent circuit in Model 6.



**Figure 11.** Equivalent circuit diagram for describing an organic coating on a metal substrate.



**Figure 12.** Nyquist plot produced from the equivalent circuit in Model 6.

## NOTE: NON-UNIQUENESS OF MODELS

It is important to remember that the equivalent circuit modelling is a method that aims to match a theoretical model of an electrochemical interface with an experimental set of data. Proper assignment of the circuit elements can only be performed when sufficient information about the chemical and electrochemical phenomena taking place at the interface is available. Moreover, it is important to keep in mind that several arrangements of circuit elements

are possible for a given set of data, and that some equivalent circuits are mathematically identical. In other words, it is important to not rely solely on EIS, and a combination of techniques should be employed to completely and accurately characterize the electrochemical interface. This limitation of EIS is explained more in the next Application Note in the series ([AN-EIS-005](#)).

## CONCLUSIONS

This Application Note shows how electrical elements can be arranged in order to build both simple and more complex equivalent circuits that can be used for

fitting EIS data. The resulting Nyquist plots for all the equivalent circuits are shown as well.

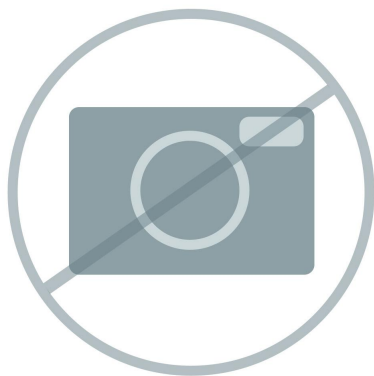


## CONTACT

Metrohm Italiana Srl  
Via G. Di Vittorio, 5  
21040 Origgio (VA)

[info@metrohm.it](mailto:info@metrohm.it)

## CONFIGURATION



### Software avanzato per la ricerca elettrochimica

NOVA è il pacchetto software progettato per controllare tutti gli strumenti Autolab con interfaccia USB.

Progettato da elettrochimici per elettrochimici e integrando oltre due decenni di esperienza degli utenti e la più recente tecnologia software .NET, NOVA offre più potenza e maggiore flessibilità al vostro potenziostato/galvanostato Autolab.

NOVA offre le seguenti caratteristiche uniche:

- editor di sequenza potente e flessibile
- chiara visione dei dati in tempo reale rilevanti
- potenti analisi dei dati e strumenti di plottaggio
- Controllo integrato per dispositivi esterni come dispositivi Metrohm Liquid Handling