



Application Note AN-V-197

Indirect determination of iodide in brine with stripping voltammetry

Quantification of iodide in the chlor-alkali process through iodate formation with the hanging mercury drop electrode

Monitoring the iodide concentration in NaCl brine is crucial during membrane process-based chlor-alkali electrolysis. Iodide can easily oxidize to iodate during electrolysis, leading to its precipitation and fouling of the membrane surface. Fouling can reduce the high efficiency of the membrane process and lead to increased energy consumption and decreased product quality. Therefore, monitoring the iodide concentration can help prevent fouling and protect the expensive membranes used in this process.

Stripping voltammetry, with its low detection limit and quick analysis capabilities, emerges as an attractive tool for the analysis of iodide in highly concentrated brines. By utilizing voltammetry, chlor-alkali plants can effectively monitor and manage iodide levels, thus preventing membrane fouling. This approach not only preserves membrane durability and function but also results in high performance of the electrolysis process.

SAMPLE

Sodium chloride brine, $\beta(\text{NaCl}) = 300 \text{ g/L}$

EXPERIMENTAL

Add 10 mL oxidized sodium chloride brine sample and 2 mL of ultrapure water into the measuring vessel. The determination of iodide is carried out with the 884 Professional VA (Figure 1) using the parameters specified in Table 1. The concentration is determined by two additions of iodate standard addition solution.



Figure 1. 884 Professional VA manual for MME.

Table 1. Parameters

Parameter	Setting
Mode	HMDE
Start potential	-0.7 V
End potential	-1.3 V
Sweep rate	13 mV/s
Peak potential iodide	-1.05 V

ELECTRODES

- Multi-Mode Electrode pro

RESULTS

The chlor-alkali brine solution contains a high concentration of chloride ions that can interfere with the direct measurement of iodide. By converting iodide to iodate, these interferences are minimized. The determined iodate concentration is then recalculated as iodide concentration as indicated in **Table 2**.

The method is suitable for the determination of low concentrations of iodide in sodium chloride brine ($\beta(\text{NaCl}) = 300 \text{ g/L}$) samples.

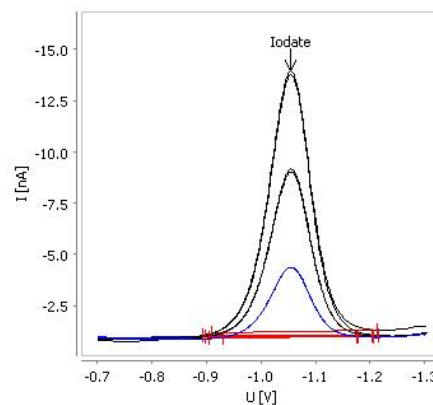


Figure 2. Determination of iodate in sodium chloride brine with stripping voltammetry.

Table 2. Result

Sample	Iodate ($\mu\text{g/L}$)
Sodium chloride brine	72.86

Table 2. Result

Sample	Iodate ($\mu\text{g/L}$)
Sodium chloride brine	72.86
Sample	Iodide ($\mu\text{g/L}$)
Sodium chloride brine	52.63

CONTACT

Metrohm Italiana Srl
Via G. Di Vittorio, 5
21040 Origgio (VA)

info@metrohm.it

CONFIGURATION



884 Professional VA manual per l'elettrodo Multi-Mode (MME)

L'884 Professional VA manual per l'elettrodo Multi-Mode (MME) è il modello base per la analisi delle tracce di fascia alta con voltammetria e polarografia con l'elettrodo Multi-Mode, l'elettrodo scTRACE Gold o l'elettrodo a goccia di bismuto. La comprovata tecnologia degli elettrodi Metrohm, in combinazione con un potenziostato/galvanostato potente e il software viva estremamente flessibile, apre nuove prospettive per la determinazione dei metalli pesanti. Il potenziostato con calibratore certificato si regola automaticamente prima di ogni misurazione e garantisce la massima precisione possibile.

Con lo strumento possono essere eseguite anche determinazioni con elettrodi a disco rotante, per esempio determinazioni di additivi organici in bagni galvanici con «Cyclic Voltammetric Stripping» (CVS), «Cyclic Pulse Voltammetric Stripping (CPVS) e cronopotenziometria (CP). La sonda di misura sostituibile consente il cambio rapido tra le varie applicazioni con elettrodi diversi.

Per il controllo, la registrazione e la valutazione dei dati è necessario il software **viva**.

L'884 Professional VA manual per MME viene fornito con una vasta gamma di accessori e una sonda di misura per elettrodi Multi-Mode pro. Il set di elettrodi e la licenza **viva** devono essere ordinati separatamente.