



Application Note AN-RS-016

Trace Detection of Potassium Ferrocyanide in Table Salt

Protecting consumer safety with Misa

Potassium ferrocyanide (KFC) is an anti-caking compound added to table salt. Although KFC is a common non-toxic food additive, its spectroscopic response is representative of analogous cyanide compounds. Trace detection of other cyanides in food products is essential to the safety of consumers, as

they can be toxic at oral consumption levels as low as 20 $\mu\text{g/g}$. This application demonstrates rapid trace analysis of potassium ferrocyanide in table salt with Misa (Metrohm Instant SERS Analyzer), in a simple assay format with minimal use of laboratory reagents.

INTRODUCTION

Federal guidelines state that KFC levels may not exceed 13 $\mu\text{g/g}$ as an additive to table salt. This application note describes detection of trace amounts

of potassium ferrocyanate in table salt with Misa and Metrohm Raman's silver nanoparticle (Ag NP) solution.

CYANIDE IN THE SERS SPECTRUM

A standard SERS reference spectrum (Figure 1) for KFC (100 µg/g, Ag NPs) is dominated by a prominent peak at 2133 cm⁻¹ corresponding to the CN stretching mode. The CN cyanide stretch is distinctive, as it is one of very few Raman peaks which appear above 1800

cm⁻¹. In a y-corrected spectrum, this strong, distinct cyanide peak appears for any cyanide moiety, whether benign KFC or toxic hydrogen cyanide gas, making SERS an excellent technology for cyanide detection.

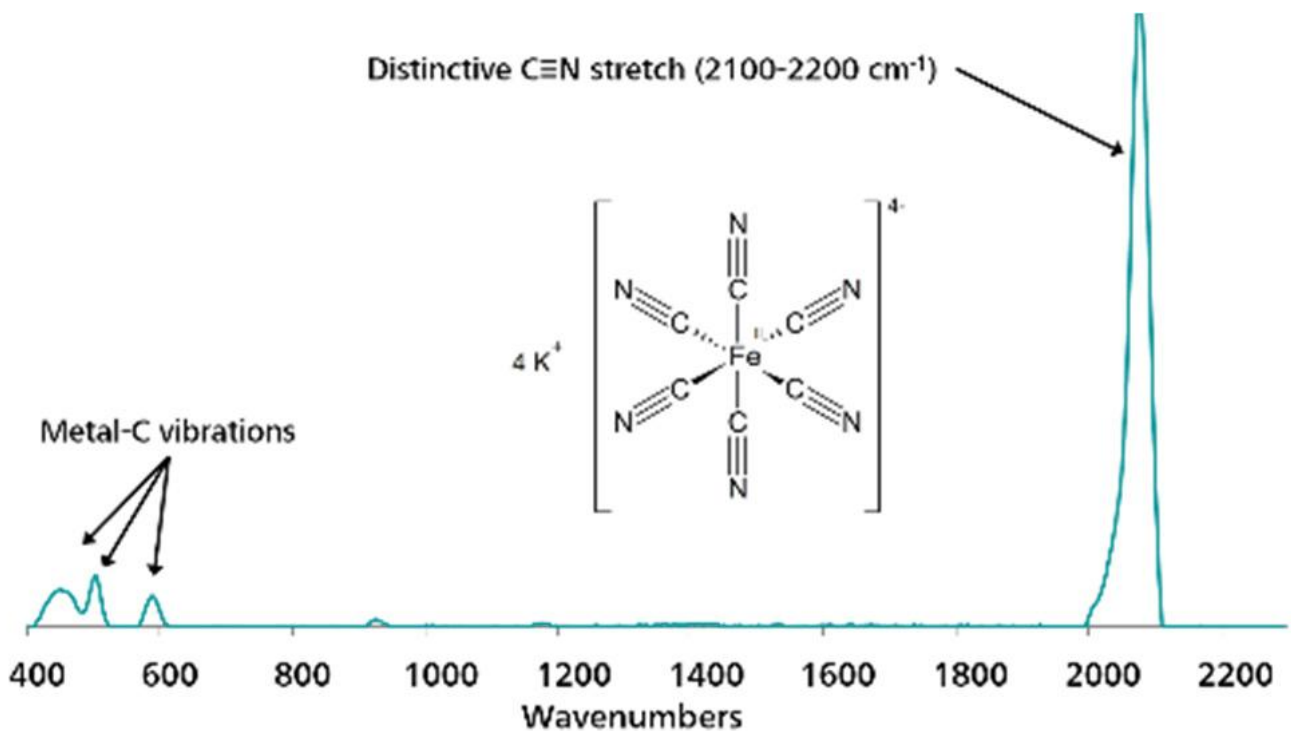


Figure 1. Representative SERS spectrum of cyanide.

EXPERIMENT

To prepare spiked samples, regular table salt was doped with potassium hexacyanoferrate(II) trihydrate dissolved in water to generate a concentration range of test samples: 10,000, 1,000, 100, 10, 1 µg/g, and 100 ng/g. Following the addition of analyte, samples were air-dried.

For SERS analysis, 100 mg of each sample was dissolved in 0.5 mL water. A 100 µL aliquot of the sample was mixed thoroughly with 800 µL Ag NPs and 50 µL 50 mmol/L NaCl in a glass vial. The sample vial was inserted into the vial attachment on Misa for testing.



Table 1. Experimental Parameters

Instrument		Acquisition	
Firmware	0.9.33	Laser Power	5
Software	Misa Cal V1.0.15	Int. Time	1 s
Misa Vial Attachment	6.07505.040	Averages	10
ID Kit - Ag NP	6.07506.450	Raster	ON

RESULTS

Figure 2 displays overlaid Ag NP SERS spectra acquired for different concentrations of KFC, demonstrating detection down to 1 µg/g.

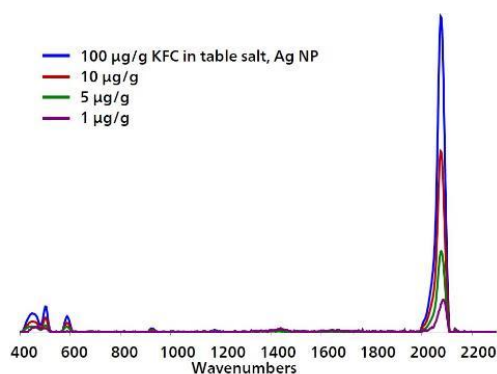


Figure 2. Overlaid, baselined, background-subtracted SERS spectra of KFC in table salt with Misa and Ag NPs.

FIELD TEST PROTOCOL

Detection of potassium ferrocyanide in the field

Using the large end of the scoop, add 3–4 scoops of sample to a 2 mL vial. Add water to the vial until ~1/4 full. Cap and shake the vial gently to dissolve solids, then let the sample rest for 2 minutes. Fill a clean vial

halfway full with Ag NPs. Using pipettes, add 2 drops of sample solution and 1 drop of NaCl solution to Ag NPs, then cap and shake the vial gently to mix. Insert into vial attachment on Misa for measurement.

Table 2. Requirements for Field Test Protocol

ID Kit - Ag NP	6.07506.450
includes:	Silver nanoparticles (Ag NP)
	Scoop
	Disposable pipettes
	2 mL glass vials
Reagents	
Water	
NaCl solution	3 g NaCl in 100 mL water
Test settings	Use ID Kit OP on Misa

CONCLUSION

Misa's rapid, facile trace detection of potassium ferrocyanide in table salt down to 1 µg/g is an order of magnitude below permissible levels. The simple procedure described herein requires minimal sample

preparation and is ideally suited for on-site testing. Given the similarity of SERS cyanide spectra, the results of this study suggest that Misa may be used as a robust cyanide sensor.

CONTACT

Metrohm France
13, avenue du Québec - CS
90038
91978 VILLEBON
COURTABOEUF CEDEX

info@metrohm.fr

CONFIGURATION



MISA Advanced

Metrohm Instant SERS Analyzer (MISA) est un système d'analyse portable hautement performant pour détecter ou identifier rapidement des traces de substances illicites, d'additifs et de contaminants alimentaires. MISA possède un spectrographe très efficace doté de la technologie ORS (Orbital Raster Scan) unique de Metrohm. Son encombrement est minimal et la durée de vie prolongée de la batterie en fait le système d'analyse idéal pour les tests sur site ou les applications de laboratoire mobiles. MISA propose divers accessoires laser de classe 1 pour des options d'échantillonnage flexibles. L'appareil d'analyse peut fonctionner via la connectivité Bluetooth ou USB.

Le module MISA Advanced est un ensemble complet qui permet à l'utilisateur d'effectuer des analyses SERS avec les solutions de nanoparticules de Metrohm et des bandelettes réactives P-SERS.

Le module MISA Advanced contient un embout de flacon MISA, un embout P-SERS, un standard de calibration ASTM, un câble USB mini, un bloc d'alimentation USB et le logiciel MISA Cal pour le fonctionnement de l'appareil MISA. Une mallette de protection robuste est également fournie pour ranger l'appareil et ses accessoires en toute sécurité.



Kit d'identification – nanoparticules d'argent (Ag NP)

Le kit d'identification Ag NP comprend les composants nécessaires à un utilisateur Mira/Misa pour une analyse SERS avec une solution d'argent colloïdal. Le kit se compose d'une spatule à usage unique, d'une pipette compte-gouttes, d'un petit flacon d'échantillon et d'un flacon d'argent colloïdal.