



Application Note AN-H-144

Ferrous iron in iron sucrose injection

Rapid and reliable determination by thermometric titration

Iron sucrose injections are used during the treatment of iron deficiency anemia. They contain a mixture of ferric iron (Fe^{3+}) and ferrous iron (Fe^{2+}). Ferrous iron content may be determined by subtracting the ferric iron content from the total determined iron content. Yet, this increases the measurement error due to error propagation. Alternative determination of iron(II) with cerium(IV) by potentiometric titration may be hampered, as the equivalence point cannot be determined unequivocally.

Determination by thermometric titration is a more

robust and therefore more reliable alternative, as this method is unaffected by the sample matrix.

Here, the endpoint of the titration is indicated by a fast responding thermometric sensor. Endpoint detection is further improved by spiking the sample with 0.2% ammonium iron(II) sulfate (FAS), increasing the reliability of the determination. Compared to potentiometric titration, thermometric titration is faster and more convenient as no sensor maintenance is required. One determination takes about 2–3 minutes.

SAMPLE AND SAMPLE PREPARATION

The method is demonstrated for three batches of iron sucrose solution.

The contents of several ampoules from the same

batch are combined in a centrifuge tube previously flooded with nitrogen. The centrifuge tube is capped tightly afterwards to prevent the entrance of air.

EXPERIMENTAL

An 859 Titrotherm which is equipped with a Thermoprobe and controlled by *tiamo*TM is used for this application.

An aliquot of sample is weighed directly into the titration vessel. Both the spike solution (ferric ammonium sulfate, FAS) to improve the detection of the endpoint and diluted sulfuric acid solution are dosed to the sample. The mixture is then made up to a total volume of approximately 30 mL with deionized water. The sample is titrated with standardized ceric ammonium nitrate until after the exothermic endpoint.



Figure 1. 859 Titrotherm with tiamo. Example setup for the thermometric titration of ferrous iron.

RESULTS

The analysis demonstrates acceptable and reproducible results with a clear exothermic endpoint.

The results are summarized in **Table 1**, and an example titration curve is displayed in **Figure 2**.

Table 1. Mean ferrous iron content determined by thermometric titration (n = 3).

Batch	Fe(II) / %	SD(abs) / %
1	0.238	0.001
2	0.220	0.007
3	0.227	0.003

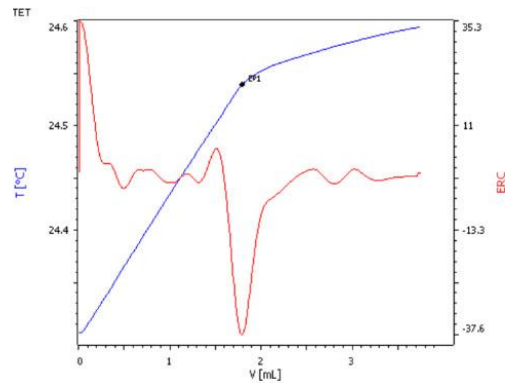


Figure 2. Example titration curve for the determination of ferrous iron by thermometric titration.

CONCLUSION

The determination of ferrous iron by thermometric titration is a quick and reliable method to assess the Fe^{2+} content alone, independent of its sample matrix. Furthermore, only one titration is necessary, whereas

potentiometric titration requires two. The Thermoprobe does not require any maintenance nor conditioning or other preparation steps, making thermometric titration easy and convenient.

Internal reference: AW TI CH1-1268-01201

CONTACT

Metrohm France
 13, avenue du Québec - CS
 90038
 91978 VILLEBON
 COURTABOEUF CEDEX

info@metrohm.fr

CONFIGURATION



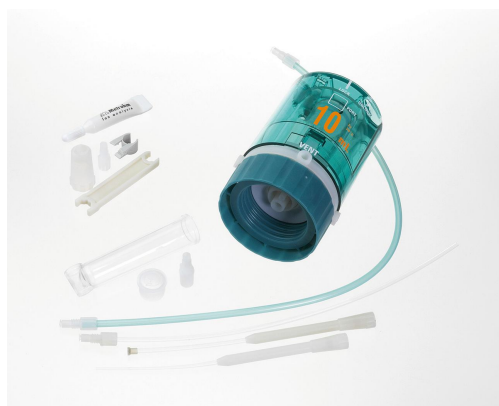
859 Titrotherm complet avec tiamo™

Titreur assisté par ordinateur pour le titrage thermométrique. Avec accessoires complets pour le titrage (burette de 10 mL, station de titrage avec agitateur à hélice, Thermoprobe, récipient de titrage et tiamo™ light).



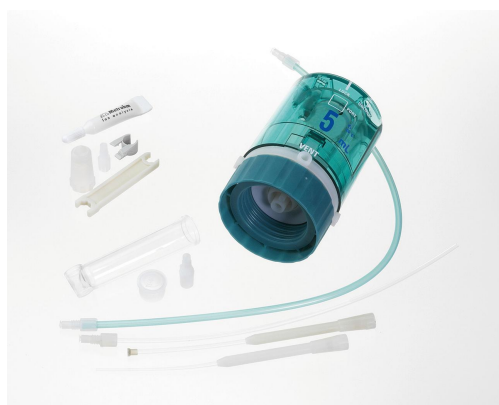
800 Dosino

Moteur de burette avec système de lecture/écriture pour les Unités de distribution intelligentes. Avec câble attendant (150 cm).



807 Dosing Unit 10 mL

807 Dosing Unit avec puce électronique de données intégrée avec cylindre en verre de 10 mL et protection contre la lumière, pouvant être installée sur une bouteille à réactifs avec filetage en verre ISO/DIN GL 45, connexion tubulaire FEP, pointe anti-diffusion. Connexion tubulaire FEP, pointe anti-diffusion.



807 Dosing Unit 5 mL

807 Dosing Unit avec puce électronique de données intégrée avec cylindre en verre de 5 mL et protection contre la lumière, pouvant être installée sur une bouteille à réactifs avec filetage en verre ISO/DIN GL 45, connexion tubulaire FEP, pointe anti-diffusion. Connexion tubulaire FEP, pointe anti-diffusion.