



Application Note AN-V-197

# Indirect determination of iodide in brine with stripping voltammetry

Quantification of iodide in the chlor-alkali process through iodate formation with the hanging mercury drop electrode

Monitoring the iodide concentration in NaCl brine is crucial during membrane process-based chlor-alkali electrolysis. Iodide can easily oxidize to iodate during electrolysis, leading to its precipitation and fouling of the membrane surface. Fouling can reduce the high efficiency of the membrane process and lead to increased energy consumption and decreased product quality. Therefore, monitoring the iodide concentration can help prevent fouling and protect the expensive membranes used in this process.

Stripping voltammetry, with its low detection limit and quick analysis capabilities, emerges as an attractive tool for the analysis of iodide in highly concentrated brines. By utilizing voltammetry, chlor-alkali plants can effectively monitor and manage iodide levels, thus preventing membrane fouling. This approach not only preserves membrane durability and function but also results in high performance of the electrolysis process.

## SAMPLE

Sodium chloride brine,  $\beta(\text{NaCl}) = 300 \text{ g/L}$

## EXPERIMENTAL

Add 10 mL oxidized sodium chloride brine sample and 2 mL of ultrapure water into the measuring vessel. The determination of iodide is carried out with the 884 Professional VA (Figure 1) using the parameters specified in Table 1. The concentration is determined by two additions of iodate standard addition solution.



Figure 1. 884 Professional VA manual for MME.

Table 1. Parameters

Parameter	Setting
Mode	HMDE
Start potential	-0.7 V
End potential	-1.3 V
Sweep rate	13 mV/s
Peak potential iodide	-1.05 V

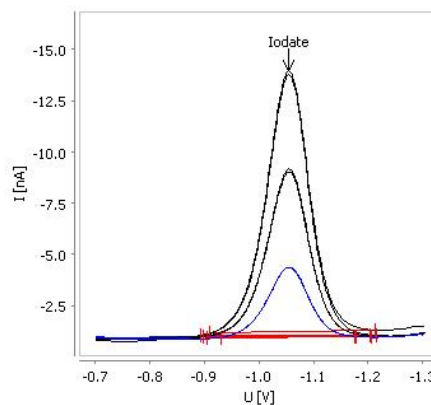
## ELECTRODES

- Multi-Mode Electrode pro

## RESULTS

The chlor-alkali brine solution contains a high concentration of chloride ions that can interfere with the direct measurement of iodide. By converting iodide to iodate, these interferences are minimized. The determined iodate concentration is then recalculated as iodide concentration as indicated in **Table 2**.

The method is suitable for the determination of low concentrations of iodide in sodium chloride brine ( $\beta(\text{NaCl}) = 300 \text{ g/L}$ ) samples.



**Figure 2.** Determination of iodate in sodium chloride brine with stripping voltammetry.

**Table 2.** Result

Sample	Iodate ( $\mu\text{g/L}$ )
Sodium chloride brine	72.86

**Table 2.** Result

Sample	Iodate ( $\mu\text{g/L}$ )
Sodium chloride brine	72.86
Sample	Iodide ( $\mu\text{g/L}$ )
Sodium chloride brine	52.63

## CONTACT

Metrohm Hispania  
Calle Aguacate 15  
28044 Madrid

[mh@metrohm.es](mailto:mh@metrohm.es)

## CONFIGURATION



### 884 Professional VA manual para electrodo Multi-Mode (MME)

884 Professional VA manual para electrodo Multi-Mode (MME) es el aparato de iniciación para el análisis de trazas de última generación mediante voltamperometría y polarografía con el electrodo Multi-Mode pro, el scTRACE Gold o el electrodo a gota de bismuto. La reconocida tecnología de electrodos de Metrohm, combinada con un potente potenciostato/galvanostato y el software viva sumamente flexible, aporta nuevas perspectivas para la determinación de metales pesados. El potenciostato con calibrador certificado se reajusta automáticamente antes de cada medida y garantiza la mayor precisión posible.

Con el aparato también se pueden llevar a cabo determinaciones con electrodos de disco rotatorio, como determinaciones de aditivos orgánicos en banos galvánicos mediante la voltamperometría de redisolución cíclica (CVS), la voltamperometría de redisolución cíclica por impulsos (CPVS) y la cronopotenciometría (CP). El cabezal de medida intercambiable permite cambiar rápidamente entre las diversas aplicaciones con electrodos diferentes.

El software **viva** es necesario para el control, así como para el registro y evaluación de datos.

El 884 Professional VA manual para MME se suministra con una extensa gama de accesorios y un cabezal de medida para el electrodo Multi-Mode pro. El juego de electrodos y la licencia **viva** se deben pedir por separado.