



Application Note AN-O-043

Carbonate impurities in caustic soda

Robust IC analysis of carbonate in sodium hydroxide

Sodium hydroxide (NaOH, also known as caustic soda or soda lye) is a strong, harmful base made of solid white crystals. It is used in many industries (e.g., paper manufacturing, petrochemistry, soap manufacturing [1]) with an annual production of about 60 million tons worldwide [2]. Caustic soda is very hygroscopic and also absorbs carbon dioxide (CO_2) from the atmosphere. This increases the carbonate content while reducing the hydroxide concentration of the product. Therefore, it should be stored under both water-free and CO_2 -free conditions, with minimal atmospheric contact. Depending on the application and its purity requirements, caustic soda as a raw product must fulfill the respective quality criteria.

Quality control analysis comprises the determination of contaminants such as alkalinity, trace metals, anionic impurities (e.g., nitrate and sulfate), as well as carbonate. The analysis of carbonate by ion chromatography (IC) is quite tricky. Suppressed anion IC with hydroxide eluents does not work as suppression converts carbonate back to carbonic acid (H_2CO_3) with almost no sensitivity. In this Application Note carbonate determination in NaOH is demonstrated by applying ion-exclusion chromatography with conductivity detection after inverse suppression – a way for automated, reliable, and secure quantification.

SAMPLE AND SAMPLE PREPARATION

Two 50% sodium hydroxide solutions are analyzed for their carbonate content (**Figure 1**). As 50% NaOH is too highly concentrated to be directly injected into the IC, a 1:20 dilution with degassed ultrapure water is applied. To avoid extra CO₂ adsorption, the final

sample is kept in a closed bottle. Depending on the quality of the original sample, Metrohm Inline Ultrafiltration is a suitable choice for automated sample preparation.

The analysis is performed on a Compact IC Flex system, fully automated with a 858 Professional Sample Processor and the Metrohm intelligent Partial Loop Injection Technique (MiPT) (**Figure 2**). Carbonate (as carbonic acid) is separated from other analytes in the sample on the Metrosep Organic Acids - 250/7.8 analytical column with a sulfuric acid eluent (**Figure 1**). The column is operated at 30 °C, providing thermal stability for reproducible results.

With direct conductivity detection, carbonate (as

carbonic acid) cannot be quantified. Thus, after separation, inverse suppression is applied prior to conductivity detection. In contrast to classical anion suppression, inverse suppression replaces the H⁺ ion with Li⁺. This step neutralizes the sulfuric acid eluent and converts weak acids into their salts. In this way, the eluent background conductivity is reduced, and the weak acids are dissociated. This improves the conductivity response of e.g., organic acids or carbonic acid.

A

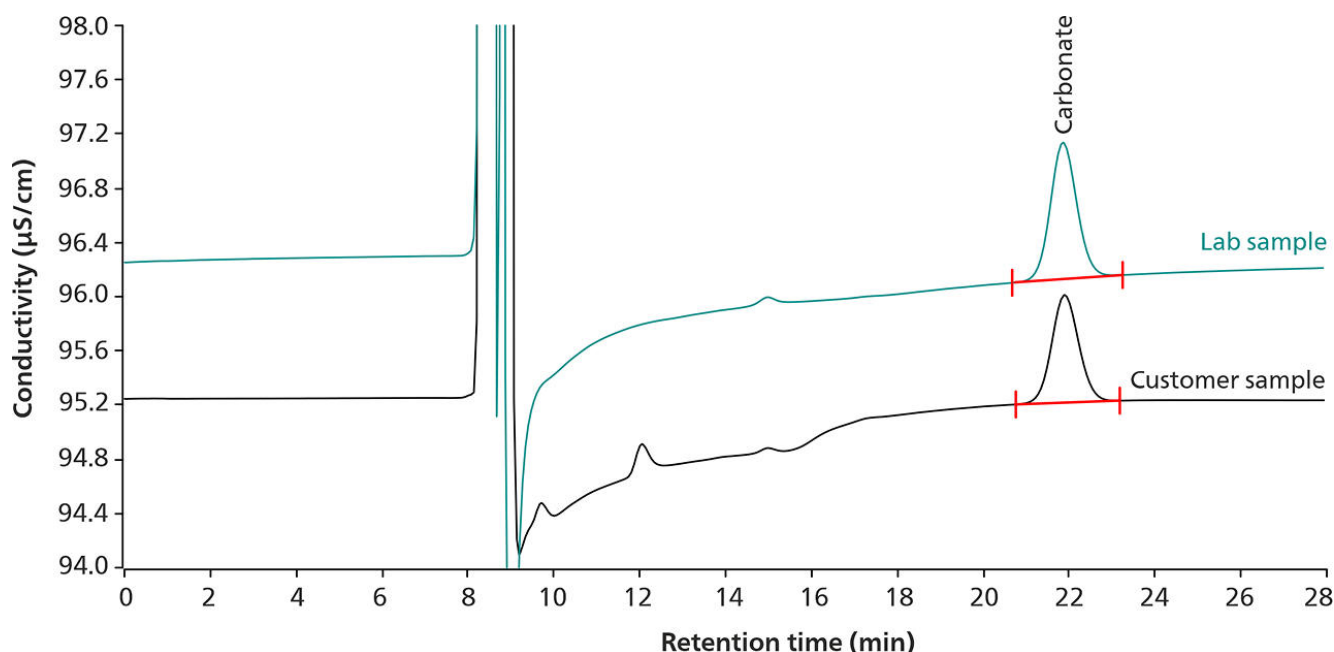


Figure 1. (A) Chromatogram overlay of carbonate in two 50% NaOH samples (lab sample: 1018 mg/kg carbonate, customer sample: 816 mg/kg carbonate) analyzed by a Compact IC 930 Compact IC Flex. A 20 µL volume of the diluted samples is injected applying the Metrohm intelligent Partial Loop Injection Technique (MiPT).

B

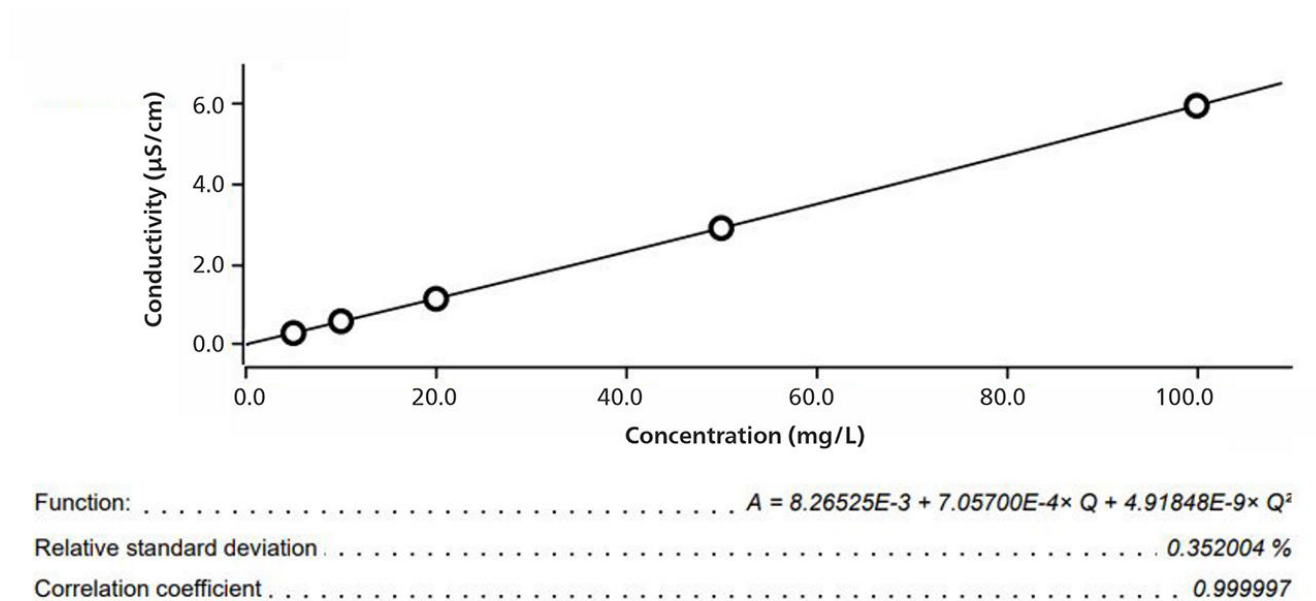


Figure 1. (B) The calibration (5–100 mg/L) is performed from a single standard using MiPT.



Figure 2. Compact instrumentation to quantify carbonate in sodium hydroxide: Compact IC Flex with a Dosino for MiPT and a 858 Professional Sample Processor.

The calibration ranged from 5 to 100 mg/L for carbonate (Figure 1). The calibration curve is built by injecting different volumes of a single standard solution as a fully automated process with MiPT (Figure 1).

Two sample bottles of 50% NaOH were tested in this

application example. The first was supplied externally, and the second bottle was sourced from the testing laboratory. Table 1 shows the concentration of carbonate in sodium hydroxide from these two samples.

Table 1. Concentration of carbonate in two samples of 50% sodium hydroxide as measured by ion-exclusion chromatography.

	Carbonate (mg/kg)
Customer sample	816
Lab sample	1018

INTRODUCCIÓN

The quality control of sodium hydroxide for carbonate content is possible with ion-exclusion chromatography. To use the universal maintenance-free detection technique of conductivity, inverse suppression with Li⁺ is a crucial step. This is easily performed with the Metrohm Suppressor Module (MSM). The freedom of usable regeneration solutions

and 100% pH stability allows full flexibility of the MSM for a variety of challenging applications. Automated IC delivers fast and reliable results. The Metrohm intelligent Partial Loop Injection Technique and optional Inline Ultrafiltration save additional time, reduce labor costs, and make this an efficient and accurate choice for quality control measurements.

REFERENCES

1. NIOSH. *Sodium Hydroxide*, The National Institute for Occupational Safety and Health (NIOSH).
<https://www.cdc.gov/niosh/topics/sodium-hydroxide/> (accessed 2022-05-13).
2. Vargel, C. Chapter E.4 - Inorganic Bases. In *Corrosion of Aluminium*; Vargel, C., Ed.; Elsevier: Amsterdam, 2004; pp 385–393.

Internal reference: AW IC CH6-1220-122014


CONTACT

Metrohm Argentina S.A.
Avda. Regimiento de
Patricios 1456
1266 Buenos Aires

info@metrohm.com.ar

www.metrohm.com

4

 Metrohm

CONFIGURATION



Metrosep Organic Acids - 250/7,8

La Metrosep Organic Acids - 250/7,8 es una columna de intercambio de cationes a base de polímero. Es la columna de alto rendimiento para la determinación de ácidos orgánicos y para solucionar problemas de separación complejos y difíciles. Además, también pueden determinarse carbonatos (con supresión inversa), fluoruros (ácido fluorhídrico), fosfatos (ácido fosfórico) y ácidos orgánicos. En comparación con la Hamilton PRP-X300 - 250/4,0, la columna Metrosep Organic Acids - 250/7,8 posee una capacidad y una selectividad mayores.



930 Compact IC Flex Oven/ChS/PP/Deg

El 930 Compact IC Flex Oven/ChS/PP/Deg es un aparato inteligente Compact IC con **horno para columnas**, **supresión química** y una **bomba peristáltica** para la regeneración de supresores, así como un **desgasificador** incorporado. El aparato se puede emplear con cualquier método de separación o de detección.

Ámbitos típicos de aplicación:

- Determinación de aniones con supresión química y detección de conductividad
- Ácidos orgánicos con cromatografía de exclusión iónica y supresión inversa



858 Professional Sample Processor – Pump

El 858 Professional Sample Processor – Pump procesa muestras de 500 µL a 500 mL. La transferencia de muestras se realiza por medio de la bomba peristáltica de dos canales bidireccional integrada o con un 800 Dosino.



Juego de accesorios CI: MiPT

Set de accesorios para el montaje de un Dosino para Partial Loop Injection.



800 Dosino

El 800 Dosino es un accionamiento con hardware de grabación/lectura para Unidades de dosificación inteligentes. Con cable fijo (150 cm).