



Application Note AN-V-213

# Copper in drinking water

## Straightforward determination by voltammetry using a gold microwire electrode

Higher levels of copper in drinking water are usually caused by corrosive action of water leaching copper from copper pipes. While copper is an essential nutrient for the human body, ingestion of higher concentrations have an adverse effect on our health. The current World Health Organization's «Guidelines for Drinking-water Quality» recommend a maximum concentration of 2000 µg/L.

With a limit of detection (LOD) of 0.5 µg/L, anodic

stripping voltammetry is a viable, less sophisticated alternative to atomic absorption spectroscopy (AAS) for the determination of copper in drinking water. While AAS (and competing methods) can only be performed in a laboratory, anodic stripping voltammetry can be used conventionally in the laboratory or alternatively in the field with the 946 Portable VA Analyzer. The determination is carried out on the scTRACE Gold electrode.

## SAMPLE

Tap water

## EXPERIMENTAL

The scTRACE Gold is electrochemically activated prior to the first determination. In the next step, the water sample and the supporting electrolyte are pipetted into the measuring vessel. The determination is carried out with the 884 Professional VA or with the 946 Portable VA Analyzer using the parameters specified in **Table 1**. The concentration is determined by two additions of a standard addition solution.



**Figure 1.** 946 Portable VA Analyzer (scTRACE Gold version)



**Figure 2.** 884 Professional VA fully automated for VA

**Table 1.** Parameters

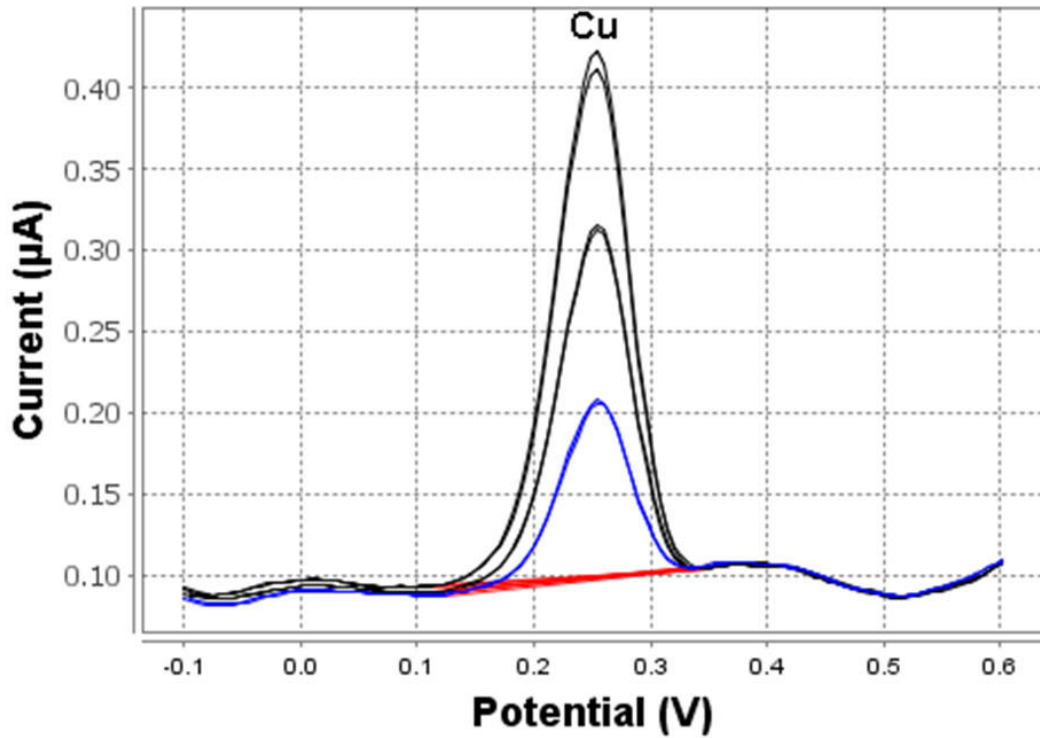
| Parameter            | Setting                 |
|----------------------|-------------------------|
| Mode                 | DP – Differential pulse |
| Deposition potential | -0.3 V                  |
| Deposition time      | 30 s                    |
| Start potential      | -0.1 V                  |
| End potential        | 0.6 V                   |
| Peak potential Cu    | 0.25 V                  |

## **ELECTRODES**

- scTRACE Gold

## **RESULTS**

The limit of detection of the method is approximately 0.5 µg/L.



**Figure 3.** Determination of copper in tap water (946 Portable VA Analyzer; 30 s deposition time)

**Table 2.** Results of Cu analysis in tap water

| Sample    | Cu ( $\mu\text{g/L}$ ) |
|-----------|------------------------|
| Tap water | 5.1                    |

## REFERENCES

Application Bulletin 429: [Determination of copper in water with the scTRACE Gold](#)

## CONTACT

Metrohm USA  
 9250 Camden Field Pkwy  
 33578 Riverview, FL

[info@metrohmusa.com](mailto:info@metrohmusa.com)

## CONFIGURATION



### 884 Professional VA manual for Multi-Mode Electrode (MME)

884 Professional VA manual for Multi-Mode Electrode (MME) is the entry-level instrument for high-end trace analysis with voltammetry and polarography with the Multi-Mode Electrode pro or the scTRACE Gold or the Bismuth drop electrode. The proven Metrohm electrode methods in combination with a high-performance potentiostat/galvanostat and the extremely flexible viva software open up new perspectives for the determination of heavy metals. The potentiostat with a certified calibrator readjusts itself automatically before each measurement, thus guaranteeing maximum precision.

Determinations with rotating disc electrodes can also be performed with the instrument, e.g. determinations of organic additives in electroplating baths with "Cyclic Voltammetric Stripping" (CVS), "Cyclic Pulse Voltammetric Stripping" (CPVS), and chronopotentiometry (CP). The replaceable measuring head enables rapid changes between the various applications with different electrodes.

The **viva** software is required for control, data collection, and evaluation.

The 884 Professional VA manual for MME is supplied with extensive accessories and a measuring head for the Multi-Mode Electrode pro. Electrode set and **viva** license need to be ordered separately.



### VA electrode equipment with scTRACE Gold for Professional VA instruments

Complete electrode set for the determination of arsenic or mercury. Includes holders for scTRACE Gold, scTRACE Gold, stirrer and measuring vessel.



### 946 Portable VA Analyzer (scTRACE Gold)

Portable metal analyzer for the determination of heavy metals such as arsenic, mercury, copper, lead, zinc, nickel, cobalt, iron, bismuth or antimony in the trace range. Instrument version for the scTRACE Gold. The system is comprised of potentiostat and separate measuring stand with integrated stirrer and replaceable electrode. The instrument is operated with the Portable VA Analyzer software. The power is supplied via the USB connector and via the integrated rechargeable battery. The instrument is supplied with all required accessories in a carrying case.