



Application Note AN-RS-040

# Trace Detection of DMT in Plant Matter

## Protecting Consumer Safety with MIRA

*N,N*-Dimethyltryptamine (DMT) is a naturally occurring [1] potent hallucinogenic compound used in traditional religious ceremonies of indigenous Central and South American cultures [2]. Modern recreational use of DMT is growing and although it is legally protected in some countries, new legislation attempts to reduce its abuse and associated adverse health effects. However, laws that address plant material containing DMT differ in neighboring countries, making enforcement of such legislation difficult. In the United States, for instance, DMT is a Schedule 1 drug, but the cultivation of trees and other plants known to contain high levels of the easily extracted compound (as much as 3.8 mg/g or 0.38%

dried plant weight [3], with a typical dose of 0.48 mg/kg body weight [4]) is permitted.

Illicit synthesis and large-scale distribution of DMT-enriched plant material is rising and must be regulated. As of March in fiscal year 2022, the U.S. Customs and Border Protection Officers (CBPOs) in Memphis, Tennessee had already seized over 635 pounds (288 kg) of DMT [5]. The ideal test for detection is robust, field-based, and can quickly and easily identify DMT in plant materials. MIRA XTR DS from Metrohm Raman provides rapid and sensitive detection of DMT in a limited resource setting using spiked plant bark as the test material.

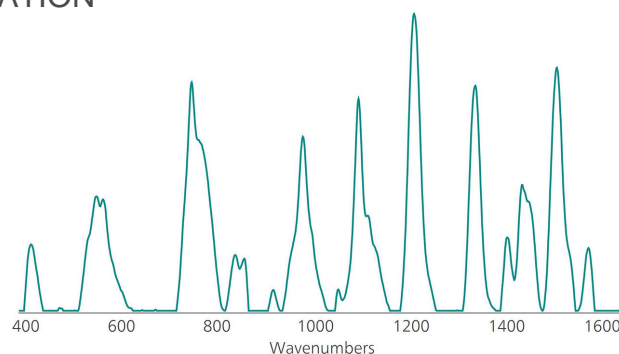
## INTRODUCTION

This Application Note simulates a test for DMT in plant material (e.g., roots, bark). Simple extraction, followed immediately by SERS (Surface-enhanced Raman

spectroscopy) analysis of the extract using colloidal gold nanoparticles (Au NPs) and/or Au P-SERS strips as SERS substrates yields positive detection of DMT.

## REFERENCE SPECTRUM AND LIBRARY CREATION

A SERS reference spectrum for DMT (Cayman Chemicals) was prepared using a solution of 1 mg/mL DMT in methanol mixed with Au NPs. The SERS spectrum (**Figure 1**) contains several highly resolved peaks which permit unambiguous identification of DMT. This spectrum can be used to create a DMT library entry that can be matched against test samples.



**Figure 1.** Reference Au NP SERS spectrum of DMT.

## MATERIALS AND METHODS

To simulate testing for the presence of DMT in suspect test samples, bark was harvested from a local plant, dried in an oven, and then ground to a rough powder using a mortar and pestle.

The resulting powder was measured out in 50 mg portions and treated with DMT to yield test samples containing 0.1%, 0.05%, 0.01%, and 0.005% mass ratios of DMT to the ground bark. After drying, each sample was placed in a glass vial with 500 L of dichloromethane (DCM). The vials were capped, shaken for one minute, then rested for five minutes to facilitate extraction of DMT and allow the settling of the plant material from the solution.





For assays using Au NPs, care was taken to pipette 100 L of clear extract from the top of each test sample vial to a fresh vial. DCM was removed from the sample through evaporation before 800 L of Au

NPs was introduced, and afterward the vial was capped and gently shaken. After two minutes, the vial was placed into the vial holder attachment on MIRA XTR DS for spectral acquisition (**Figure 2**).

**P-SERS TEST**

For analysis using P-SERS strips, 10 L of the DCM extract was pipetted onto the test strip, followed by 10 L of 1 mmol/L HCl. The strip was then fully dried

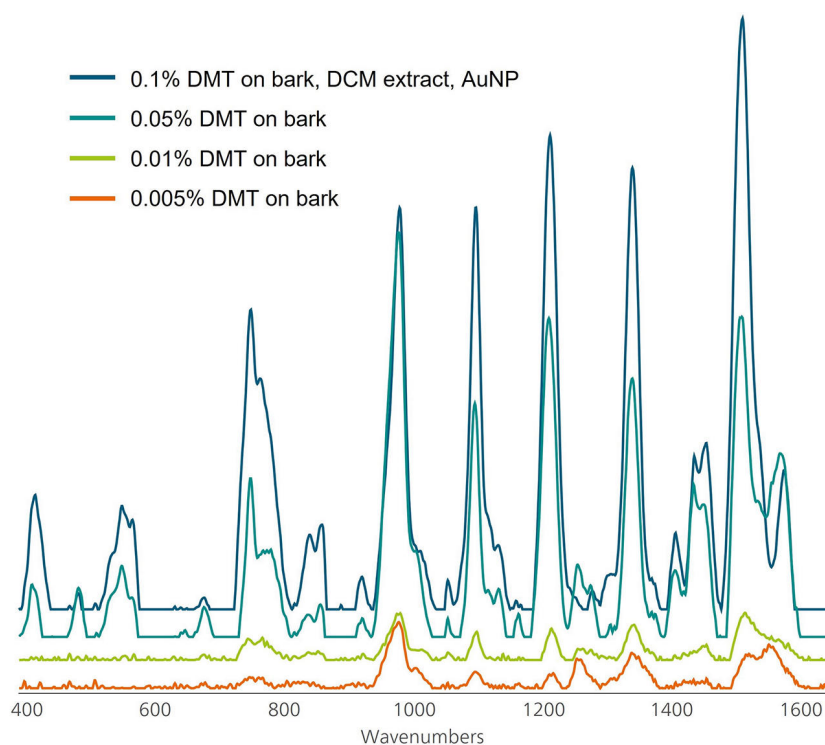
and placed into the SERS attachment on MIRA XTR DS for measurement.

| MIRA XTR DS settings for both assays |     |
|--------------------------------------|-----|
| Laser Power                          | 5   |
| Integration time (s)                 | 4.0 |
| Averages                             | 5   |
| Raster                               | ON  |

**RESULTS**

As shown in **Figure 2**, dichloromethane extracts of bark samples containing 0.1% and 0.05% DMT provide a strong SERS response using Au NPs. While the response is considerably reduced at the

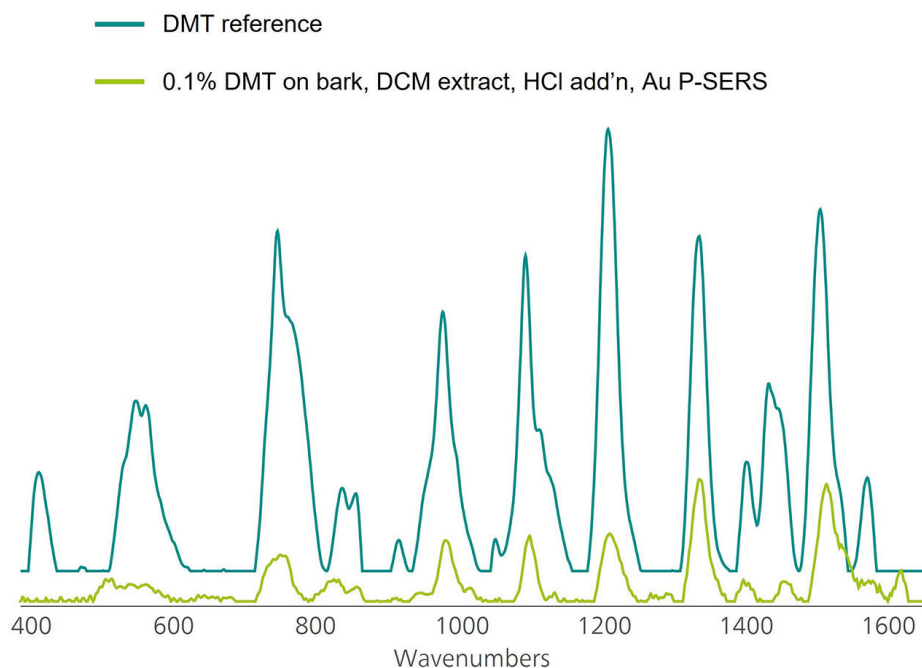
lower concentrations tested, it is sufficiently strong for some of the peaks to provide a LOD of approximately 0.005% for the experimental conditions employed in the test simulation.



**Figure 2.** Signature Au NP SERS peaks from DMT can be detected very sensitively at even at 0.005 wt% (shown in orange).

With P-SERS strips, detection sensitivity is reduced but still sufficient for test samples containing higher concentrations of DMT (**Figure 3**). There are two arguments for the use of P-SERS strips:

1. P-SERS, included in the ID Kit, is designed specifically for use in field conditions.
2. Assay sensitivity is not as critical for DMT detection as for some other trace substances, as extractable DMT is typically present in plant materials at concentrations greater than 0.1%.



**Figure 3.** Signature Au P-SERS peaks from DMT can be detected sensitively even at 0.1 wt% (shown in green).

## CONCLUSION

DMT is among the most common drugs seized by Custom and Border Patrol (CBP) agents—it is often encountered as shipments of root bark containing high concentrations of the hallucinogen (from 0.2%

to 3.8% by weight). MIRA XTR DS, used with ID Kit, is a user-friendly, on-site solution for rapid and sensitive DMT detection that can facilitate detection and seizure of illegal imports.

## REFERENCES

1. Philadelphia CBP Seizes Two Shipments of Dangerous Controlled Substances Destined to NY and Chicago | U.S. Customs and Border Protection.  
<https://www.cbp.gov/newsroom/local-media-release/philadelphia-cbp-seizes-two-shipments-dangerous-controlled-substances> (accessed 2022-10-17).
2. 60 Pounds of Dimethyltryptamine Seized by CBP Officers | U.S. Customs and Border Protection.  
<https://www.cbp.gov/newsroom/local-media-release/60-pounds-dimethyltryptamine-seized-cbp-officers> (accessed 2022-10-17).
3. Chambers, M. I.; Appley, M. G.; Longo, C. M.; et al. Detection and Quantification of Psychoactive N,N-Dimethyltryptamine in Ayahuasca Brews by Ambient Ionization High-Resolution Mass Spectrometry. *ACS Omega* **2020**, 5 (44), 28547–28554.  
[DOI:10.1021/acsomega.0c03196](https://doi.org/10.1021/acsomega.0c03196)
4. N,n Dimethyltryptamine - an overview | ScienceDirect Topics.  
<https://www.sciencedirect.com/topics/nursing-and-health-professions/n-n-dimethyltryptamine> (accessed 2022-10-14).
5. CBP Memphis Seizes over 634 lbs of DMT so far this Fiscal Year | U.S. Customs and Border Protection.  
<https://www.cbp.gov/newsroom/local-media-release/cbp-memphis-seizes-over-634-lbs-dmt-so-far-fiscal-year> (accessed 2022-10-14).

## CONTACT

Metrohm Nederland  
Bijdorpplein 13-15  
2992 LB Barendrecht

[info@metrohm.nl](mailto:info@metrohm.nl)

## CONFIGURATION



### MIRA XTR Basic

MIRA XTR is an alternative for high power 1064 nm systems. Powered by advanced computational processing, MIRA XTR uses a more sensitive 785 nm laser light along with XTR algorithms to eXTRACT the Raman data from the sample fluorescence. MIRA XTR also features Orbital Raster Scanning (ORS) to provide better coverage of the sample increasing the accuracy of the results.

The Basic package is a starter package that contains the basic components required for operating the MIRA XTR. The Basic package includes a Calibration Standard and Intelligent Universal Attachment. Class 3B operation. MIRA XTR supports Metrohm handheld Raman libraries.



#### ID Kit – Au P-SERS

The ID Kit - Au P-SERS contains the components a Mira / Misa user requires to perform a SERS analysis using gold P-SERS strips. The kit contains a disposable spatula, dropper, sample vials and 2 gold P-SERS strips.