

Application Note AN-D-003

# Quality control of dialysis concentrates

## Comprehensive analysis of anions, acetate, and cations by IC

Hemodialysis is a medical treatment applied to sustain life when renal functions decline and the kidneys' endogenous detoxification abilities fail [1,2]. Dialysis fluids (hemodialysis solutions), composed of electrolytes, buffers, and carbohydrates (glucose) identical to the blood, are a central element of this treatment [1,3–5]. The diffusion gradient between the blood and the dialysis fluid allows removal of

metabolic waste and normalization of electrolyte content [1,2]. Dialysis fluids are prepared by adding concentrates that contain electrolytes, carbohydrates, and buffers to water. These require the highest standards for manufacturing and on-site preparation, specified by e.g., the European Pharmacopeia, ISO 11663, ISO 23500, or ISO 13958 (for hemodialysis concentrates) [1,2,4].

Atomic absorption spectroscopy (AAS) is often used for quality control purposes but is restricted to cationic (metallic) components and a limited number of concurrently determined analytes. Ion chromatography (IC) is an automated, fast, and sensitive solution to accurately quantify cationic and anionic components including acetate

simultaneously. This comprehensive approach makes IC an economic alternative to traditional analytical techniques for the quality control of pharmaceutical solutions like hemodialysis concentrates. Ease-of-use, accuracy, and the high throughput capabilities of IC increase productivity and comply with the demands of modern routine and research laboratories.

## SAMPLE AND SAMPLE PREPARATION

Dialysis fluids must closely mimic blood plasma composition to remove toxic components from blood by diffusion. These fluids are typically composed of water, electrolytes that provide cations and anions (e.g., sodium, potassium, calcium, chloride), buffers (e.g., acetate or carbonate), and carbohydrates (e.g., glucose) [1,3–5]. In this application example, cations, anions, and acetate content were analyzed in two hemodialysis concentrates (Table 1). Optimal results were obtained with a dilution in the range of 1:500 to 1:750 using ultrapure water (UPW).

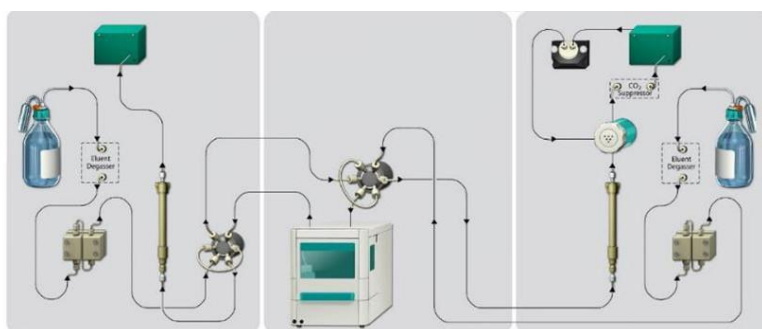
The dialysis concentrates were provided by [MTN](#)

[Neubrandenburg GmbH](#) a [Nipro](#) company, an established producer of high-quality hemodialysis products. Both were acid concentrates (A-concentrates) for bicarbonate dialysis with different compositions (Table 1). The production of such concentrates is subject to strong standardized quality criteria as e.g., ISO 13958, ISO 11663, and ANSI/AAMI RD 61:2000 [1]. Strict standards also apply to the other components necessary for the preparation of the final dialysis fluid, including water and the basic concentrates (B-concentrates) [1,3–5].

## EXPERIMENTAL

Anions and cations were analyzed with a dual channel IC setup (Figure 1) using conductivity detection (sequentially suppressed for anions). A

UV/VIS detector (947 Professional UV/VIS detector Vario) can be used as well to exclude nitrite, nitrate, and bromide contaminations in the concentrates.



**Figure 1.** Flow path for a dual channel Metrohm IC system. Injection was performed using the 889 Sample Center – cool (middle). Non-suppressed conductivity was used for cation detection, while anions were detected with suppressed conductivity as well as UV (205 nm).

**These impurities can be determined with high precision and sensitivity even in presence of elevated chloride concentrations** (Table 1). Method performance tests with nitrate- and nitrite-spiked concentrates yielded recoveries of 90–110%.

**Table 1.** Composition (average and range) of two tested hemodialysis acid concentrates (A-concentrates) according to the manufacturer.

A-concentrate	#293	#570
Sodium (mol/L)	3.61 (3.51–3.70)	4.64 (4.52–4.75)
Potassium (mmol/L)	70.00 (66.50–73.50)	90.00 (85.50–94.50)
Magnesium (mmol/L)	17.50 (16.63–18.37)	22.50 (21.38–23.62)
Calcium (mmol/L)	52.50 (49.88–55.12)	56.25 (53.44–59.06)
Chloride (mol/L)	3.82 (3.62–4.01)	4.88 (4.64–5.13)
Acetic acid (mol/L)	0.11 (0.10–0.11)	0.14 (0.13–0.14)
Glucose (g/L)	35.00 (33.25–36.75)	45.00 (42.75–47.75)

The complete system (**Figure 1**) was controlled by Waters Empower™ 3 software. A refrigerated autosampler (889 IC Sample Center – cool) was used to extend the stability of the highly diluted samples. Anions were separated using the [Metrosep A Supp 19](#) - 150/4.0 column (standard eluent and flow rate, **Figure 2 A, C**). This high-capacity IC column exhibits excellent separation capabilities, even for highly loaded matrices.

The unique properties of the Metrosep A Supp 19 column allow adequate separation and quantification of acetate even in presence of high concentrations of chloride. In addition to acetate (0.4–20 mg/L) and chloride (6–300 mg/L), the system calibration included fluoride (0.02–1 mg/L), nitrite, and bromide (0.04–2 mg/L), as well as nitrate, phosphate, and

sulfate (0.2–10 mg/L).

Cations were separated using a [Metrosep C 6](#) - 150/4.0 column (standard eluent, flow rate: 1.3 mL/min, **Figure 2 B**). Cation calibration was performed for sodium (4–200 mg/L), ammonium (0.02–1 mg/L), and potassium, calcium, and magnesium (0.2–10 mg/L). The special column chemistry of the Metrosep C 6 guarantees optimal peak resolutions and enables quantification of low concentrations of analytes (e.g., ammonium) that elute close to more highly concentrated components (e.g., sodium).

Anions and cations were analyzed simultaneously from the same sample in less than 25 minutes (**Figure 2**). The robustness of both separation columns permits high flow rates, speeding up the overall run time.

## RESULTS

A summary of the results, including the recoveries calculated compared to the manufacturer values, is shown in **Table 2**. Relative standard deviations (RSDs) of less than 1% for anions and cations for repeated sample measurements reveal adequate repeatability of the method. The recoveries calculated according to the manufacturer data fell between 91–106% for all analytes (**Tables 1 and 2**).

The major components of the tested A-concentrates are sodium and chloride, corresponding to the main fractions in blood plasma, with 136–145 mEq/L and

98–106 mEq/L, respectively [2]. However, this also shows that these concentrates are highly saline solutions — analytically challenging and often requiring matrix elimination steps for accurate analyte determination. When present in high concentrations, both sodium and chloride can overlap nearby peaks (e.g., acetate, nitrite, or ammonium) making their quantification impossible or overloading the column, resulting in peak broadening and substantial retention time shifts.

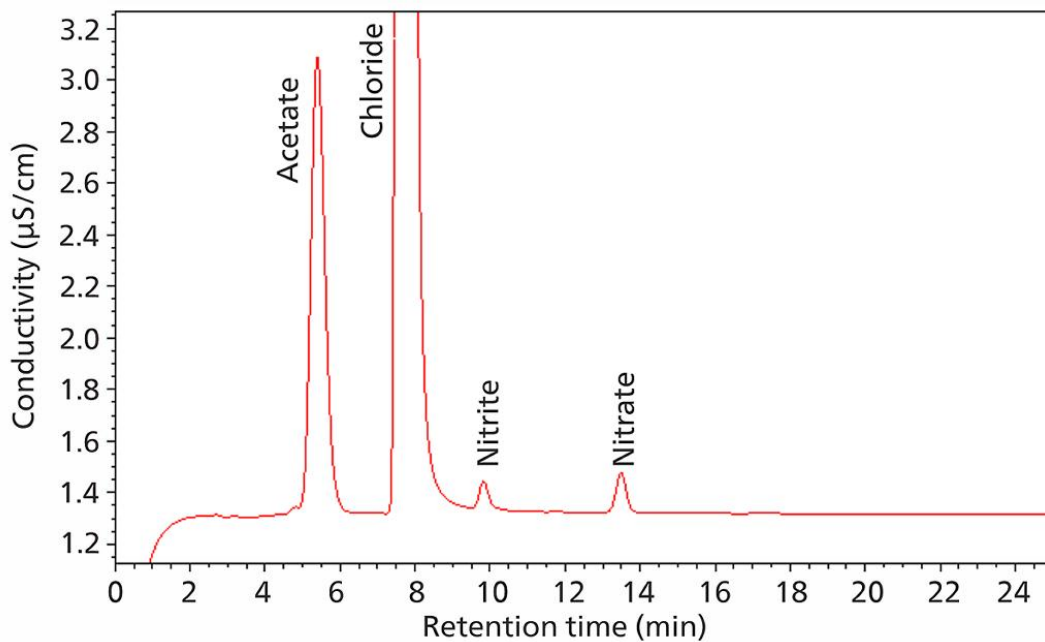


Figure 2 A.

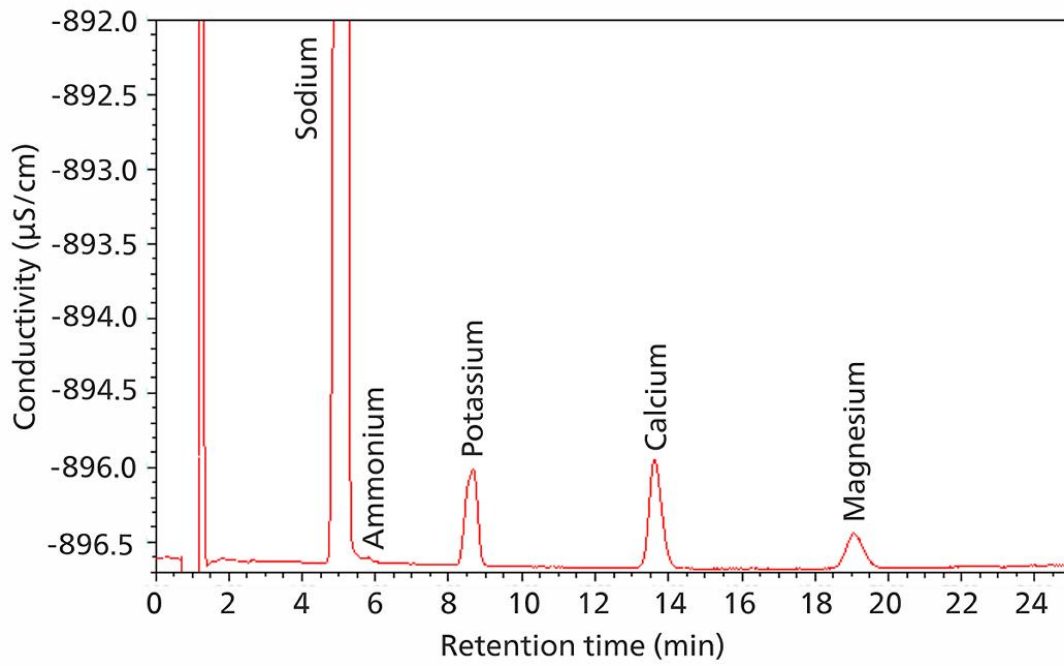


Figure 2 B.

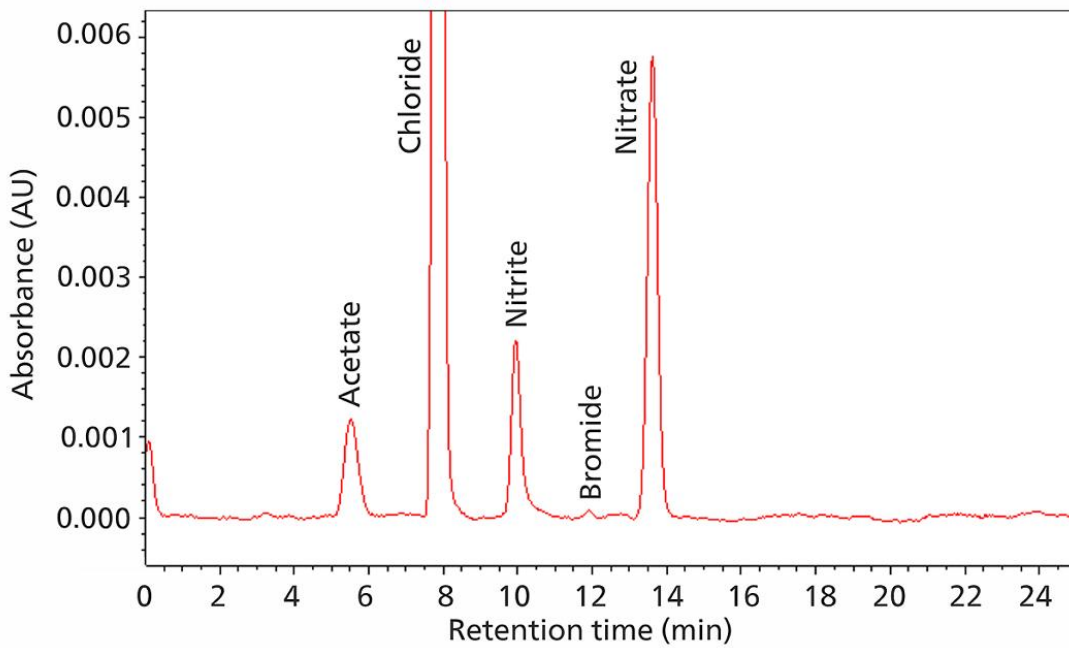


Figure 2 C. Chromatograms showing conductivity (A, B) and UV (C) signals for IC analysis of anions (including acetate) and cations in the hemodialysis concentrate sample #293. All samples were diluted by a factor of 750 with UPW. Injection volume was 20  $\mu\text{L}$ .

**For the A-concentrates, the accurate determination of all components (acetate, chloride, sodium, potassium, calcium, and magnesium,** Table 1) is indispensable and requires appropriate peak separation combined with sharp and symmetric peaks. The use of the Metrosep A Supp 19 and Metrosep C 6 columns prevents the aforementioned problems – the high column capacities prevent matrix overload and guarantee excellent peak separation.

**Table 2.** Data for the major components in the hemodialysis A-concentrate samples #293 and #570 from MTN Neubrandenburg GmbH a Nipro company. The data show average values and RSDs for two separately prepared and analyzed samples (dilution 1:500) as well as the recoveries based on the manufacturer data.

	#293 Conc <sub>AVG</sub> ±SD (RSD (%))	Recovery (%)	#570 Conc <sub>AVG</sub> ±SD (RSD (%))	Recovery (%)
Sodium (mol/L)	3.70±0.04 (1.0)	103	4.90±0.03 (0.6)	106
Potassium (mmol/L)	66.21±0.52 (0.8)	95	86.75±0.42 (0.5)	96
Magnesium (mmol/L)	15.95±0.11 (0.7)	91	21.47±0.08 (0.4)	96
Calcium (mmol/L)	50.36±0.56 (1.1)	96	55.18±0.19 (0.3)	98
Chloride (mol/L)	3.84±0.01 (0.2)	103	4.97±0.01 (0.1)	104
Acetic acid (mol/L)	0.11±<0.01 (<0.1)	102	0.14±<0.01 (0.2)	102

Acetate ( $\approx 8$  g/L) can be determined directly beside high chloride concentrations ( $\approx 180$  g/L) on the Metrosep A Supp 19 column. No additional steps are required, such as matrix elimination or using different dilution factors. Cations can be determined in parallel from the same sample (Figure 1, cation channel) as

the Metrosep C 6 column is also ideal for high matrix samples.

To analyze the potential impurities nitrite, bromide, and nitrate, higher sensitivity can be achieved using a UV/VIS detector at a wavelength of 205 nm.

## CONCLUSION

Dialysis concentrates used for hemodialysis treatments are highly saline solutions, requiring matrix-tolerant, accurate, and sensitive quality control analytics. By using a dual channel IC system, anions and cations can be determined accurately and simultaneously from the same sample. In less than 25 minutes, major concentrate components of acetate, chloride, sodium, potassium, calcium, and magnesium, along with impurities (e.g., nitrite, nitrate, or ammonium) can be quantified. Although analyzing high salinity matrices is often challenging,

the high capacity separation columns [Metrosep A Supp 19](#) and [Metrosep C 6](#) reduce the common risks for column overload and inaccurate peak identification and quantification. Simultaneous analysis of anionic and cationic components and impurities enables a comprehensive examination of all analytes from a single sample, presenting IC as an accurate, sensitive, efficient, high-throughput analytical technique for the quality control of pharmaceutical solutions such as hemodialysis concentrates.

Metrohm IC systems can be fully controlled (including the intelligent and automated features) by different software: MagIC Net (Metrohm), Empower™ 3

(Waters), or OpenLab CDS (Agilent). These options provide a flexible solution for many analytical laboratories.

## REFERENCES

[1] Hoenich, N.; Thijssen, S.; Kitzler, T.; Levin, R.; Ronco, C. Impact of Water Quality and Dialysis Fluid Composition on Dialysis Practice. *BPU* **2008**, *26* (1), 6–11. <https://doi.org/10.1159/000110556>.

[2] Hoenich, N. A.; Ronco, C. Haemodialysis Fluid: Composition and Clinical Importance. *BPU* **2007**, *25* (1), 62–68. <https://doi.org/10.1159/000096400>.

[3] Coulliette, A. D.; Arduino, M. J. Hemodialysis and

Water Quality. *Seminars in Dialysis* **2013**, *26* (4), 427–438. <https://doi.org/10.1111/sdi.12113>.

[4] Parker, J. N.; Parker, P. M. *Hemodialysis - A Medical Dictionary, Bibliography, and Annotated Research Guide to Internet References*; ICON Health Publications, USA, 2004.

[5] Catto, G. R. D. *Haemodialysis*; Kluwer Academic Publishers, Dordrecht, Boston, London, 1989.

Internal reference: AW IC CH-1455-042022

## CONTACT

Metrohm UK & Ireland  
Evenwood Close  
WA7 1LZ Runcorn

[info@metrohm.co.uk](mailto:info@metrohm.co.uk)

## CONFIGURATION



### Metrosep A Supp 19 - 150/4.0

Outstanding separation properties and high-capacity – these are the things which clearly distinguish the Metrosep A Supp 19 product family from the rest of the column portfolio. It features best peak symmetries and selectivities as well as high thermal, mechanical and chemical stability, which makes it extremely robust and stable in the presence of higher flow rates and pressures.

The 150 mm version is considered the standard column for anion chromatography, as it reliably solves the lion's share of applications and is very versatile in its use. Thanks to its high capacity, the Metrosep A Supp 19 - 150/4.0 separation column is particularly well suited even for complex applications with sophisticated matrices. The range of applications of the Metrosep A Supp 19 - 150/4.0 is very versatile, thanks to its outstanding separation properties and comprises the following applications, for example:

- Determination of standard anions (fluoride, chloride, nitrite, bromide, nitrate, phosphate and sulfate) in a wide variety of water samples;
- Determination of standard anions and organic acids in complex sample matrices, e.g. environmental or food samples;
- Determination of standard anions and organic acids in boiler feed water to ensure the safe operation of power plants;
- Determination of standard anions in pharmaceutical samples.





#### **Metrosep A Supp 19 Guard/4.0**

The Metrosep A Supp 19 Guard/4.0 reliably protects the anion separation columns of the Metrosep A Supp 19 product family against contaminations from the sample or eluent and thus prolong their service life significantly. The guard columns and separation columns of the Metrosep A Supp 19 product family are made of PEEK and filled with the same material. This ensures that the chromatographic separating efficiency is not restricted in any way.

The "On Column Guard System" makes it possible to screw the guard column onto the anion separation column directly and conveniently. The economical price and simple handling make the Metrosep A Supp 19 Guard/4.0 the ideal protection for the separation column.



#### **Metrosep C 6 - 150/4.0**

Le matériau haute capacité de la C 6 fait de la colonne de séparation Metrosep C 6 - 150/4,0 la solution optimale pour la séparation des cations standard à des concentrations très différentes avec des temps de rétention raisonnables. Les eaux potables présentant de faibles teneurs en ammonium peuvent être déterminées à l'aide de cette colonne.



#### **Metrosep C 6 Guard/4.0**

The Metrosep C 6 Guard/4.0 contains the C 6 column material and is used to protect against particles and contamination. This considerably lengthens the service life of the analytical separation column. The Metrosep C 6 Guard/4.0 works according to the "On Column Guard System" and is screwed directly onto the respective separation column with virtually no dead volume.



### 940 Professional IC Vario TWO/SeS/PP

The 940 Professional IC Vario TWO/SeS/PP is the intelligent **two-channel** IC instrument with **sequential suppression** (one channel) and a **peristaltic pump** for suppressor regeneration. The instrument can be used with any separation and detection methods.

Typical areas of application:

- Standard instrument for parallel anion and cation determinations
- Trace analysis for anions and cations
- Online monitoring for anions and cations



### 889 IC Sample Center – cool

The 889 IC Sample Center – cool is the appropriate automation solution when you have only a very small amount of sample. In comparison with the 889 IC Sample Center, it possesses in addition a cooling function and is thus the ideal sample changer for biochemically relevant or thermally unstable samples.



### 947 Professional UV/VIS Detector Vario MW

As an intelligent, multi-wavelength detector, the 947 Professional UV/VIS Detector Vario MW permits a secure and reliable quantification of substances active in the ultraviolet or visible range. Up to eight wavelengths can be freely selected. A diode array is used for detection.