



Application Note AN-PAN-1043

Online trace analysis of cations in the primary circuit of nuclear power plants

In power plants, corrosion is the primary factor leading to costly and critical downtimes. Pressurized water reactors (PWR) are generally designed with a third water circuit in addition to the two found in other thermal power plants (e.g., boiling water reactors (BWRs) or coal-fired and geothermal power plants). In this so-called «primary circuit», the primary

coolant water is pumped under high pressure to absorb heat generated by nuclear fission, further transferring this heat to the secondary circuit. The PWR ensures that radioactive materials remain contained and do not disperse to the secondary circuit and therefore potentially to the environment.

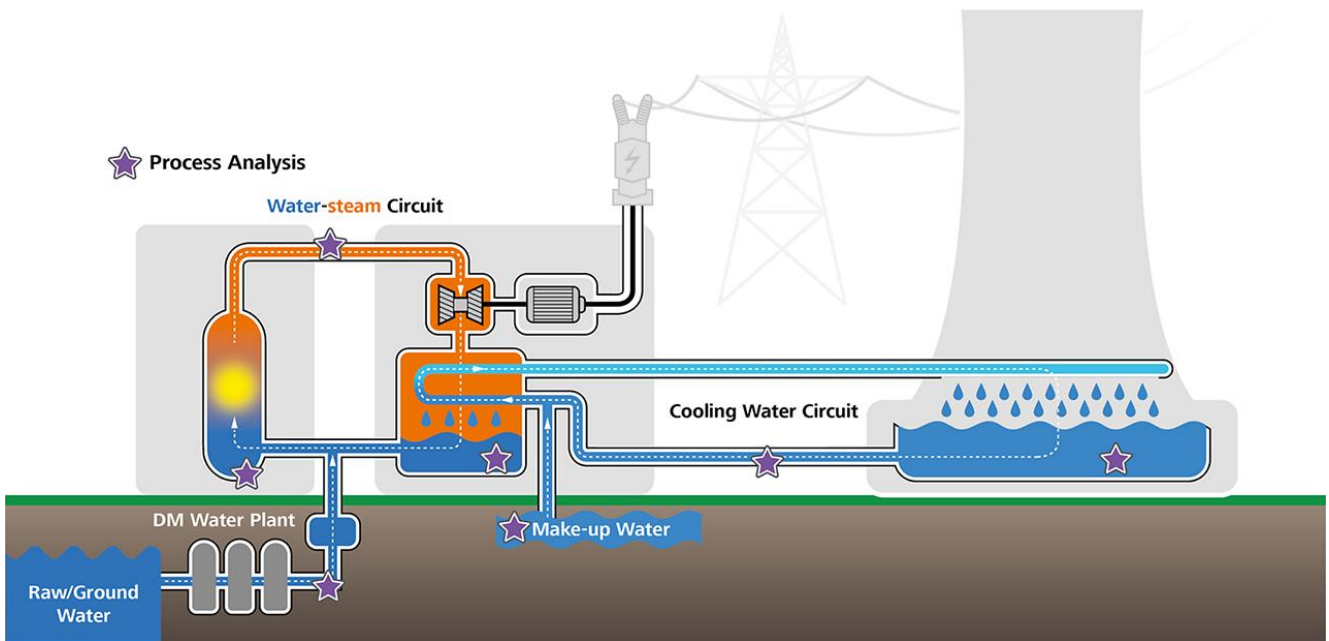


Figure 1. Diagram of a 3-water circuit nuclear power plant with stars noting areas where online process analysis can be integrated into the system.

This additional water circuit entails some specific requirements regarding chemical analysis and monitoring. In the PWR, light water is used as primary coolant. Boron (as boric acid, H_3BO_3) readily absorbs neutrons and is added to the coolant to control reactivity. Additions of monoisotopic lithium hydroxide (LiOH) to the primary circuit assures a pH value greater than 7 to prevent corrosion. **Lithium** is therefore a critical parameter to monitor in PWRs. **Nickel** is an important alloying metal that increases

the corrosion resistance of steel. However, in the dissolved form, nickel promotes corrosion, making regular checks of the Ni^{2+} concentration necessary. In addition, metals released by corrosion undergo nuclear reactions and thus increase radiation in the power plant. To limit corrosion of the materials and to prevent the formation of radioactive products, the water is often treated with depleted zinc oxide. The **zinc** concentration must be monitored as well to ensure radioactivity does not spread.

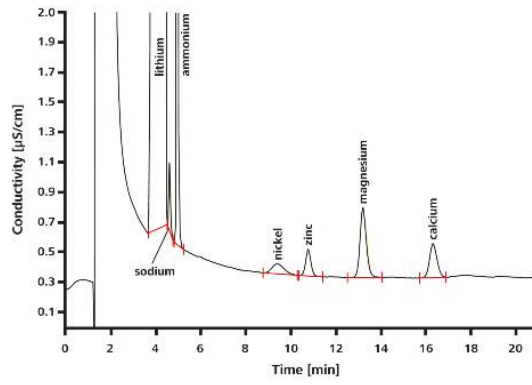


Figure 2. Simulated sample from the primary circuit of a pressurized water reactor containing 2 g/L H_3BO_3 and 3.3 mg/L LiOH spiked with 2 $\mu\text{g/L}$ nickel, zinc, calcium, and magnesium; preconcentration volume: 1000 μL .

APPLICATION

These cations and more can be determined down to the sub- $\mu\text{g/L}$ range in a single analysis using ion chromatography. However, precise, reliable trace analysis requires the method to be automated as much as possible. Metrohm Process Analytics offers a complete solution for this task: the **2060 Ion Chromatograph (IC) Process Analyzer** featuring combined Inline Preconcentration and Inline Matrix Elimination. With one injection, the 2060 IC Process Analyzer is able to measure numerous ionic compounds in aqueous media from ng/L to % concentrations. The analysis system is fed directly and continuously with samples via a bypass in the process. Automatic calibration guarantees excellent detection limits, a high reproducibility, and excellent recovery rates.

The 2060 IC Process Analyzer provides alarms if preset warning or intervention concentration limits are reached, helping to save costs by preventing irreparable damage due to corrosion. The 2060 IC Process Analyzer can monitor both anions and cations with a single ion chromatograph and two detector blocks, giving a comprehensive overview of the water circuit chemistry. The possibility to connect one analyzer to up to 20 sample streams means multiple areas within water-steam circuits in a power plant can be monitored by a single instrument. With a built-in eluent production module and optional PURELAB® flex 5/6 from ELGA® for pressureless ultrapure water, the 2060 IC Process Analyzer can be configured to run trace anion analyses autonomously for up to several weeks.

The analysis is carried out fully automatically using a combination of Inline Matrix Elimination (for the H_3BO_3) and Inline Neutralization (for the LiOH). Analyte detection is by conductivity.



Figure 3. The 2060 IC Process Analyzer is available with either one or two measurement channels, along with integrated liquid handling modules and several automated sample preparation options.

BENEFITS FOR IC IN PROCESS

- **Inline eluent preparation** ensures consistently stable baselines
- Protect valuable **company assets** (e.g. pipes, PWR, and turbines, which are prone to corrosion)
- **Safe working environment** and automated sampling)
- **High precision analyses** for a wide spectrum of analytes with multiple types of detectors



FURTHER READING

Related application notes

[Copper, nickel, zinc, and common cations in the water-steam cycle of a boiling water reactor \(BWR\)](#)

[Zinc, nickel, calcium, and magnesium in borated water of a pressurized water reactor \(PWR\)](#)

[Lithium in borated water of a pressurized water reactor \(PWR\)](#)

[Online analysis of trace cations in power plant water matrices](#)

Other related documents

[8.000.6072EN Trace-level determination of cations in the secondary circuit of a PWR-type nuclear power](#)

[plant using ion chromatography after inline sample preparation](#)

CONTACT

Metrohm Deutschland
In den Birken 3
70794 Filderstadt

info@metrohm.de

CONFIGURATION



2060 IC Process Analyzer

Der 2060 Ion Chromatograph (IC) Process Analyzer von Metrohm Process Analytics basiert auf dem modularen Konzept der 2060-Plattform. Dank dieser modularen Architektur können die Schränke getrennt und an unterschiedlichen Standorten in einem Betrieb aufgestellt werden. Darüber hinaus können für zeitsparende sequenzielle Analysen in mehreren Bereichen eines Betriebs bis zu 20 Probenströme angeschlossen werden.

Dieses Analysengerät hat keinerlei Einschränkungen hinsichtlich Hardware, Software und Individualisierung der Anwendungen. Vom beständigen Eluent Production Module über Nassteilmodule für die Probenkonditionierung bis hin zu mehreren IC-Detektorblöcken bietet der 2060 IC Process Analyzer alle Optionen für beliebige industrielle Anwendungen.

Die Software des 2060 ist eine Komplettlösung zur Steuerung des Analysengeräts bei der Durchführung von Routineanalysen und bietet verschiedene Betriebsarten, Zeitprogramme und Trenddiagramme. Darüber hinaus kann die Software des 2060 dank der Vielzahl an Kommunikationsprotokollen (z. B. Modbus oder diskreter E/A) so programmiert werden, dass automatisch Rückmeldungen und Alarme an den Prozess gesendet und bei Bedarf Massnahmen ergriffen werden (z. B. erneute Messung einer Probe oder Start eines Reinigungszyklus). Alle diese Funktionen gewährleisten eine vollautomatische Diagnose des industriellen Prozesses rund um die Uhr, sieben Tage die Woche.