



Application Note AN-RA-004

# UV/VIS spectroelectrochemical monitoring of 4-nitrophenol degradation

Spectroelectrochemistry is a multi-response technique that provides both electrochemical and spectroscopic information about a chemical system in a single experiment, i.e., it offers information from two different points of view. Spectroelectrochemistry focused on the UV/VIS region is one of the most

important combinations because this allows us to obtain not only valuable qualitative information, but also outstanding quantitative results. In this application note, the degradation kinetics for 4-nitrophenol, a known pollutant, were determined using SPELEC.

## INTRODUCTION

In-situ spectroelectrochemistry provides both electrochemical and real-time spectroscopic information while a redox reaction takes place. In contrast, ex-situ methods usually require one or more samples and external instruments for data analysis in order to better understand the different processes occurring on the electrode surface.

Although 4-nitrophenol (4-NP) is included in the U.S. Environmental Protection Agency List of Priority Pollutants [1,2], this compound (which is hazardous for humans, plants, and animals) has been widely

used in the fabrication of drugs, leather, or pesticides [3], in agriculture, as well as in domestic activities [4]. Therefore, the study of its degradation is currently an important issue.

In this work, the combination of electrochemistry and UV/VIS spectroscopy in a single experiment has allowed monitoring the degradation of 4-NP from an aqueous solution. Furthermore, spectroelectrochemistry displays the quantitative information needed to calculate the efficiency of the degradation process.

## MATERIAL AND METHODS

### Instrumentation

Spectroelectrochemical monitoring was performed using SPELEC, a fully-integrated instrument for UV/VIS spectroelectrochemistry. This instrument integrates in a unique box the electrochemical (bipotentiostat/galvanostat) and the spectroscopic equipment (light source and detector). SPELEC was used in combination with a bifurcated reflection probe (RPROBE-VIS-UV) (Figure 1). This instrument is controlled by Dropview SPELEC, a dedicated software that allows performing real-time spectroelectrochemical measurements and provides completely synchronized electrochemical and optical data.

Gold screen-printed electrodes (SPEs) used in this work (220AT) consist of a flat ceramic strip on which a three-electrode system comprising the electrochemical cell is screen-printed. The gold working electrode is circular with a diameter of 4.0 mm, a silver electrode is used as pseudoreference electrode, and a carbon electrode acts as counter electrode. The 220AT electrodes were used in a near-normal reflection configuration in a reflection cell (REFLECELL).

### Methods

Electrochemical degradation of 4-nitrophenol is based on its irreversible reduction in  $\text{Na}_2\text{SO}_4$  aqueous solution. UV/VIS spectra were simultaneously

recorded along with the electrochemical signal, obtaining additional information of the electrode surface during the whole experiment.

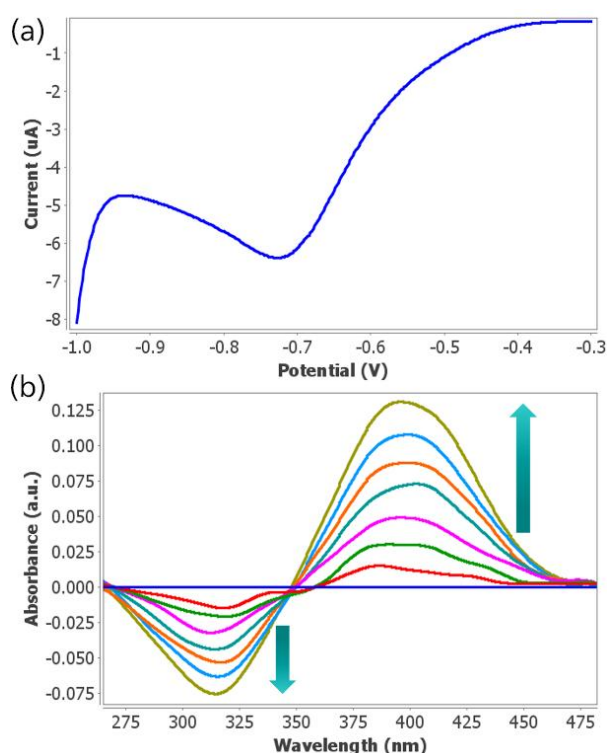


**Figure 1.** Setup for UV/VIS spectroelectrochemistry.

## RESULTS

Spectroelectrochemical behavior of 4-NP was studied by linear sweep voltammetry (Fig. 2a), scanning the potential from -0.30 V to -1.00 V at a rate of  $0.01 \text{ V s}^{-1}$  in a solution composed of  $1 \times 10^{-4} \text{ M}$  4-NP and  $0.5 \text{ M}$   $\text{Na}_2\text{SO}_4$ . UV/VIS spectra were simultaneously recorded to the electrochemical experiment and the

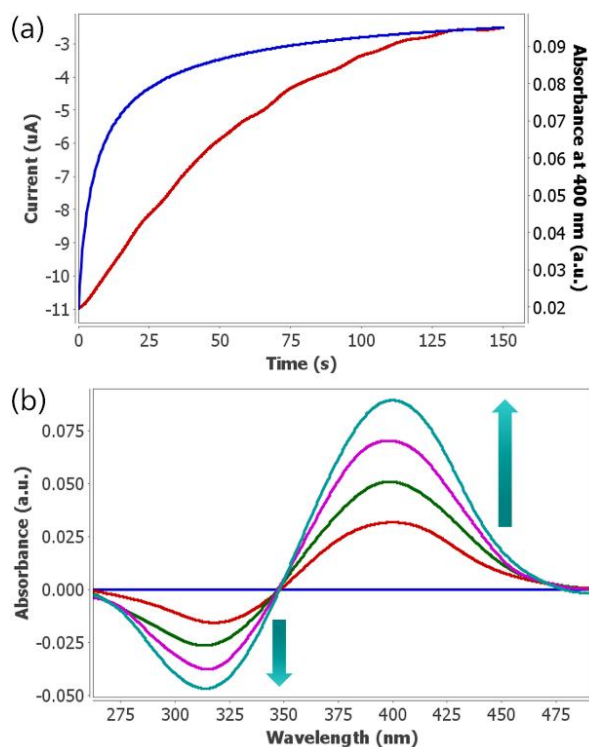
spectrum of the initial solution (4-NP) was taken as reference for the UV/VIS absorption spectra. As can be observed in Fig. 2b, UV/VIS spectra show two absorption bands, centered at 320 and 400 nm, related to the consumption of 4-NP and the generation of degradation products, respectively.



**Figure 2.** (a) Linear sweep voltammogram obtained scanning the potential from -0.30 V to -1.00 V and (b) UV/VIS spectra simultaneously obtained in  $1 \times 10^{-4} \text{ M}$  4-NP and  $0.5 \text{ M}$   $\text{Na}_2\text{SO}_4$  solution aqueous solution using 220AT electrodes.

As a proof of concept, the electrochemical degradation of 4-NP was performed by chronoamperometry, applying -1.00 V over a period of 150 s (blue line in Fig. 3a) in a mixed solution of  $2 \times 10^{-5} \text{ M}$  4-NP and  $0.5 \text{ M}$   $\text{Na}_2\text{SO}_4$ . Although 750 UV/VIS spectra were simultaneously recorded to the chronoamperometry, only a few spectra from the experiment are represented in Fig. 3b.

Time-resolved spectroelectrochemistry utilizes short integration times and therefore it provides a large number of spectra during an electrochemical experiment. It allows us to represent the evolution of the absorption band at 400 nm with time, and as can be seen in Fig. 3a (red line), the absorbance at 400 nm increases during the chronoamperometry.



**Figure 3.** (a) Chronoamperogram performed in  $2 \times 10^{-5}$  M 4-NP and 0.5 M  $\text{Na}_2\text{SO}_4$  solution applying -1.00 V during 150 s (blue line) using 220AT electrodes. Evolution of the UV/VIS absorbance at 400 nm (red line) with time. (b) UV/VIS spectra recorded during the electrochemical process.

However, spectroelectrochemistry not only provides qualitative information but also quantitative information that can be used to calculate the

efficiency of the degradation process. The theoretical maximum absorbance value is calculated according to the Lambert-Beer's law:

$$A_{\text{theoretical}} = \epsilon \cdot b \cdot C \quad (\text{eq. 1})$$

where  $\epsilon$  is the molar absorption coefficient,  $b$  is the optical pathway length, and  $C$  is the concentration (in moles per liter, M). The experimental maximum

absorbance value is extracted from the UV/VIS spectra and the efficiency ( $r$ ) is calculated as:

$$r = \frac{A_{\text{experimental}}}{A_{\text{theoretical}}} \times 100 \quad (\text{eq. 2})$$

According to the Lambert-Beer's law (eq. 1) with  $\epsilon = 17357 \text{ L mol}^{-1} \text{ cm}^{-1}$  at 400 nm [5],  $b = 0.36 \text{ cm}$ , and  $C = 2 \times 10^{-5} \text{ M}$ , the  $A_{\text{theoretical}}$  value was 0.125 a.u. On the other hand, the experimental maximum value of absorbance obtained is 0.095 a.u., so the efficiency of

this simple electrochemical degradation process (eq.2) was  $r = 76.0\%$ .

The efficiency of this procedure was evaluated with respect to the time while the potential was applied:

Time (s)	Efficiency (%)
25	21.6
50	39.4
75	45.6
100	53.2
125	61.4
150	76.0

## CONCLUSIONS

A compact instrument for real-time UV/VIS spectroelectrochemistry provides valuable information of the different processes that take place on the electrode surface.

SPELEC instrument provides information of a different nature (electrochemical and spectroscopic) within a single experiment.

This multi-response technique enables the study of degradation kinetics for various pollutants.

Quantitative information obtained by UV/VIS spectroelectrochemistry has demonstrated to be very useful in the determination of the efficiency of the degradation of the pollutant 4-nitrophenol.

## REFERENCES

1. US Environmental Protection Agency, US Environmental Protection Agency, Federal Register, 1979, 44, 233, Fed. Regist. 44 (1979) 23.
2. US Environmental Protection Agency, US Environmental Protection Agency, Fed. Regist. 1989, 52, 131, Fed. Regist. 52 (1989) 131.
3. D. Chaara, I. Pavlovic, F. Bruna, M.A. Ulibarri, K. Draoui, C. Barriga, Removal of nitrophenol pesticides from aqueous solutions by layered double hydroxides and their calcined products., Appl. Clay Sci. 50 (2010) 292–298.
4. S. Laha, K.P. Petrova, Biodegradation of 4-nitrophenol by indigenous microbial populations in Everglades soils, Biodegradation. 8 (1998) 349–356.
5. D. Ibanez, E. Gomez, E. Valles, A. Colina, A. Heras, Spectroelectrochemical monitoring of contaminants during the electrochemical filtration process using free-standing carbon nanotube filters, Electrochim. Acta. 280 (2018) 17–24.

## CONTACT

Metrohm Deutschland  
In den Birken 3  
70794 Filderstadt

[info@metrohm.de](mailto:info@metrohm.de)



### SPELEC UV-VIS-Messgerät (200 - 900 nm)

SPELEC ist ein Messgerät zur Durchführung spektroelektrochemischer Messungen. Es kombiniert in nur einer Box eine Lichtquelle, einen Bipotentiostat/Galvanostat und ein Spektrometer (UV/VIS-Wellenlängenbereich: 200 - 900 nm) mit einer dedizierten spektroelektrochemischen Software, die eine Synchronisation optischer und elektrochemischer Experimente ermöglicht.



### Reflexionssonde VIS-UV

Reflexionssonde VIS-UV zur Durchführung von Reflexionsexperimenten, geeignet für die Arbeit mit unserer Reflexionszelle für unsere Dickfilmelektroden oder mit einer konventionellen Zelle.



### Reflexionszelle für Dickfilmelektroden

Zelle aus Polytetrafluorethylen, geeignet zur Durchführung von Reflexionsexperimenten mit Dickfilmelektroden im Standardformat mit der elektrochemischen Zelle in der Mitte des Streifens. Verschlusssystem mit leistungsstarken Magneten.





### Dickfilmelektrode aus Gold (AUX: Au; REF: Ag) / Ink AT

Dickfilmelektrode aus Gold (AUX: Au; REF: Ag) / Ink AT. Für das Arbeiten mit Mikrovolumen einsetzbar, auch für dezentrale Analysen oder die Entwicklung spezifischer Sensoren geeignet.