

CH-9101 Herisau/Switzerland
Phone +41 71 353 85 85
Fax +41 71 353 89 01
CompuServe 100031,3703
<http://www.metrohm.com>

726 TP Backup

Data Backup for the 726 Titroprocessor
6.6026.000 Version 1.0
for MS-Windows™

Instructions for Use

Contents

1. Introduction	2
2. Installation and setup	3
2.1 System requirements	3
2.2 Installation of the program	4
2.3 Configuration of the 726 TP Backup program	4
3. Data transfer 726 Titroprocessor – PC	8
3.1 Backing up the 726 Titroprocessor files	8
3.2 File names.....	8
3.3 The file backup.....	9
3.4 Automated data transfer	10
3.5 Copying files from the PC to the 726 Titroprocessor	11
3.6 Receiving reports	13
4. Viewing ASCII files	15
4.1 Viewing files (View)	15
4.2 Printing files (Print).....	15
4.3 Use screen fonts	15
5. Details regarding operation	16
5.1 Saving files	16
5.2 The session list	16
5.3 TP Backup status	19
5.4 The interface	19
5.5 Default settings	20
6. Troubleshooting	22
7. License terms	25
8. Index	26

1 Introduction

The program offers the following possibilities:

- Methods, determinations, sample silos and access control files can be saved on the PC and reloaded on the 726 Titroprocessor or the data card. These binary files can be sent back to the Titroprocessor to be viewed and edited.
- Determinations can also be saved automatically to the computer right after completion, by using the 'auto save' function (Destination 'RS232 x').
- The built-in terminal program can be used for receipt and storage of individual reports on the PC.

The files of the 726 Titroprocessor are transferred to the PC in the background, work with the computer can continue normally. A small control box informs you of the status of the transfer.

The 726 TP Backup version 1.0 is designed for the transfer (sending and receipt) of data with the 726 Titroprocessor and the 5.726.0010 (or higher) program version.

Switch to the dialog page **Configuration** of the 726 Titroprocessor to view the program version.

Please refer to the 8.726.1003 Instructions for Use for operation of the 726 Titroprocessor.

2 Installation and setup

2.1 System requirements

Computer	IBM-compatible PC
Operating system	DOS with Windows 3.1x, Windows 95 or NT 4.0
Mouse	required
Memory	min. 4 MB RAM min. 2 MB free storage on the hard disk, disk drive 3½"
RS232 interface	for the connection to the 726 Titroprocessor
Connecting cable	6.2125.060 possibly 6.2125.010 Adapter (adapter cable 25-pin to 9-pin)
726 Titroprocessor	Program version 5.726.0010 or higher

Warning:

Before the RS connecting cable is plugged in or disconnected, both the PC and the 726 Titroprocessor must be switched off. Connection with instruments switched on could lead to damage!

2.2 Installation of the program

Windows 3.1x

Insert the installation disk of 726 TP Backup in the 3½" disk drive.
Start Windows 3.1x if you have not already done so.

- In the Windows Program Manager, choose the **Run** command from the **File** menu.
Windows shows the dialog box **Run**.
- Enter **a:setup** in the Command Line box, press the **Enter** key.
- The '**InstallShield Wizard**' will then guide you through the setup process.
Just follow the instructions on the screen.

Windows 95 / NT 4.0

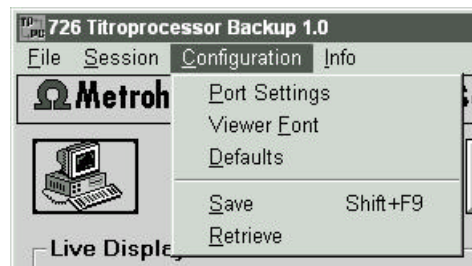
Insert the installation disk of 726 TP Backup in the 3½" disk drive.
Start Win95/NT if you have not already done so.

- Click the **Start** button on the task bar and chose the **Run** option in the Start menu.
Windows shows the dialog box **Run**.
- Enter **a:setup** in the Command Line box, press the **Enter** key.
- The '**InstallShield Wizard**' will then guide you through the setup process.
Just follow the instructions on the screen.

2.3 Configuration of the 726 TP Backup program

Port settings

Start the 726 TP Backup program and open the **Port Settings** menu option in the **Configuration** menu.



Switch on the 726 Titroprocessor. Switch to the dialog page **Config.** and then **Interfaces**.

Warning:

The RS232 interface of the 726 Titroprocessor (RS232 Interface.1 or Interface.2) and the current RS232 interface of the computer must have the same configuration.

The following are suggested values:

Baud rate 9600
Data bits 8
Stop bit(s) 1
Parity none
Handshake HWshort

Set the following parameters on the Titroprocessor if you have the PC connected to the 726's RS232 Interface 1.

Configuration: Interfaces			
RS232	Ifc.1	Ifc.2	
Baud rate	9600	9600	<— Data transfer parameter
Data bit	8	8	<— "
Stop bit	1	1	<— "
Parity	none	none	<— "
Handshake	HWshort	HWshort	<— "
Receive mode	off	off	<— must be set off for file backup
Balance	none	none	
Printer	none	none	
Communication Int.		1	<— RS232 interface
Commun. mode	keyCTRL		<— Communication mode
Internal printer on			
Auto form feed off			
			Quit

Set the following parameters on the TP Backup program if you have the 726 connected to the PC's COM2 interface.

The screenshot shows a 'Port Settings' dialog box with the following configurations:

- Baud Rate:** Radio buttons for 300, 600, 1200, 2400, 4800, and 9600. The 9600 option is selected.
- Data Bits:** Radio buttons for 7 and 8. The 8 option is selected.
- Stop Bits:** Radio buttons for 1 and 2. The 1 option is selected.
- Parity:** Radio buttons for None, Odd, and Even. The None option is selected.
- Com Port:** Radio buttons for Com1, Com2, Com3, and Com4. The Com2 option is selected.
- Handshake:** Radio buttons for None, RTS/CTS, and HWShort. The HWShort option is selected.
- Transmit Buffer Size:** A text box containing the value 20480.
- Buttons for 'OK' and 'Cancel' are visible at the bottom right.

To save the selected settings in the 726 TP Backup program, first confirm the settings of the dialog box **Port settings** by clicking **OK**. Finally, either the key combination **Shift + F9** can be pressed or the **Save** command chosen from the **Configuration** menu.

Important Note

File transfer from PC to Titroprocessor may cause problems with some Personal Computers that are equipped with high speed serial interfaces. If you experience problems with file transfer set the PC's transmit buffer to minimal size or switch off the interface's FIFO buffer.

Switch off the FIFO buffer of the serial interface with **Windows 3.x** as follows:

Start **Sysedit.exe** or **Notepad.exe** from the accessories window and open the **System.ini** file (must be present in the C:\Windows directory). Search the **[386Enh]** section and modify the **COMxFIFO** entry to 'COMxFIFO=0' (x=1 or 2). Save the system.ini file, close the editor application and restart Windows.

Modify the transmit buffer for **Windows 95** as follows:

Click **Start** on the task bar and then – **Settings – Control panel – System – Device Manager – Ports – COMx – Properties – Port settings – Advanced**

(COMx=COM1 or COM2)

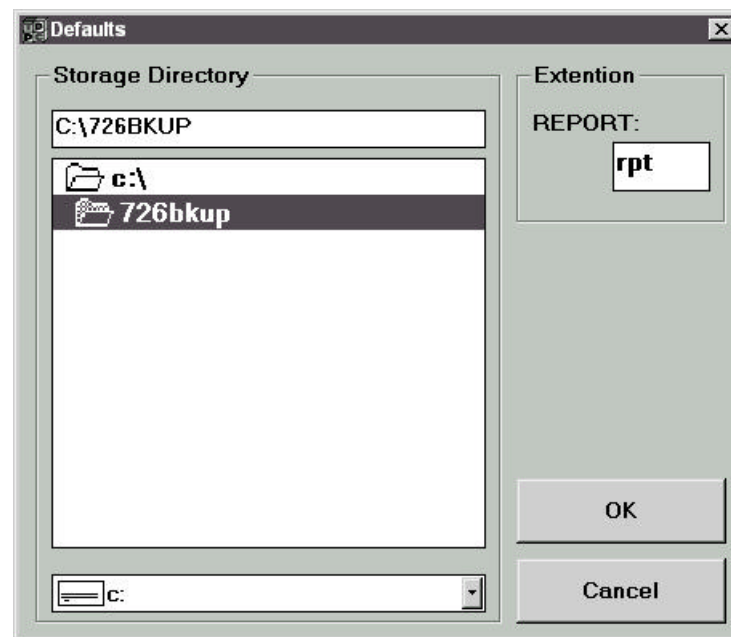
Put the transmit buffer to **minimal size**. Quit the Control panel and restart Windows.

Viewer font

You may choose your own font for the data display in the terminal window by clicking the **Viewer font** command in the **configuration** menu.

Defaults

By clicking on the **Defaults** command in the **configuration** menu you may define the directory to store the Titroprocessor's binary files in. It is also possible to define a default file name extension for report files.



Save / Retrieve

The configuration settings can be saved and retrieved. The **726bkup.ini** file contains these settings and must not be deleted or modified manually.

3 Data transfer 726 Titroprocessor – PC

3.1 Backing up the 726 Titroprocessor files

It is good practice to save the contents of the 726 Titroprocessor on a PC from time to time using the 726's File manager. The following files can be transferred:

- **Determinations** (*.dtm or any file name)
- **Methods** (*.mth)
- **Sample silos** (*.slo)
- **Access configuration** (*.acf)

Either single, several or all files of a storage location can be backed up.

3.2 File names

In contrast to DOS computers, the files on the 726 Titroprocessor can be freely named. In particular, characters such as ?, * or + and others can be used. Moreover, the instrument distinguishes between uppercase and lowercase letters.

However, when working with 726 TP Backup, these options should not be used for the following reasons:

- If the 726 Titroprocessor file name contains characters that are not permitted by DOS, the file will not be transferred correctly and an error message will be displayed.
- If files of the 726 Titroprocessor whose names differ only by uppercase or lowercase notation (e.g. TEST.mth and Test.mth) are transferred to the PC, only the file last sent will be stored. DOS does not distinguish between uppercase and lowercase notation. The TEST.mth and Test.mth files are therefore regarded as identical and will be overwritten without warning.

Caution:

With the 726 Titroprocessor always use file designations that are valid under DOS and unambiguous. Do not use special characters.

3.3 The file backup



With the RS232 cable attached to both the PC and the 726 Titroprocessor, start 726 TP Backup and click the **Receive** arrow or choose the **Receive** command from the **File** menu.

Instead of the "Receive" and "Send" arrows, the "Stop" icon appears.

In the 726 Titroprocessor switch to the File manager (softkey **[File manager]** on the **Main Page**) and choose a storage location (softkey **[Change storage]**). Here, the desired files can be marked for file operations. Use the softkeys **[Un/Mark]** or **[Un/Mark all]** to mark the files you wish to backup. You may either use the **[Select]** softkey of the second softkey list (softkey **[>> >>]**) to apply specific file selection filters.

Change view	Change storage	Un/Lock file	Load from	Copy to	Delete	Un/Mark	Un/Mark all	>> >>
Send to RS	Receive from RS		Sort	Select				>> >>

The transfer is started with the softkey **[Send to RS]** and **RS232 Intface 1** (or **RS232 Intface 2**).



If the transfer is at an end or if you wish to terminate the connection, either click the "Stop" icon or choose **Stop** from the **File** menu.

All transferred files with the necessary additional information are listed below the live display in a table (→ Session List).

3.4 Automated data transfer

Determinations can be sent to the computer automatically.

As the 726 TP Backup program works completely in the background, determinations can be saved continuously without blocking the computer for other applications.

Connect the PC and 726 Titroprocessor, switch on both instruments and start the 726 TP Backup program.



To set up the connection, click **Receive** (or choose the **Receive** command from the **File** menu).

On the **Main page** of the 726 Titroprocessor, modify the following settings:

```
Auto save      'on'  
Destination    'RS232 1' or 'RS232 2'
```

The determination data are now sent to the PC after completion of the determination.

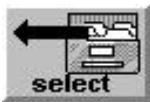
3.5 Copying files from the PC to the 726 Titroprocessor

The 726 Titroprocessor can send both binary and pure text files (ASCII). However, it can receive only binary data in the special format of the 726 Titroprocessor.

Warning:

Never try to edit binary files on the PC. Each of these files is checked exhaustively for integrity during transfer. If a file is changed, an error message is displayed as soon as you try to transfer it and the file cannot be transferred correctly to the 726 Titroprocessor!

Switch off both PC and 726 Titroprocessor and connect them with the RS232 cable. Switch on both instruments. Switch to the File manager of the 726 Titroprocessor and choose the desired storage location. Start Windows and 726 TP Backup on the PC.



The files to be transferred must first be added to the Session List. This is done either

- by clicking **Select** (choose the **Select** command from the **Files** menu). Select the files you wish to transfer by clicking with the mouse and confirm the selection with **OK**,
- or
- by opening the dialog box "**Select File(s)**" as described above and then filling in the "**File Name**" box accordingly. For example, to select all methods in a directory, enter ***.mth** and confirm with **OK**,
- or
- by opening an existing Session List (call up the **Open** option from the **Session** menu). Use the mouse to select a file in the Session List that you wish to transfer and choose the **Put in queue** command from the **File** menu or use the key combination **Ctrl + P**. The file so selected will be appended to the end of the Session List.

The selected files are not prepared for transfer until the program has checked whether they have the correct format for the 726 Titroprocessor. If the file is acceptable, "In queue" appears in the Status column of the Session List. If the file is unacceptable, "Rejected" appears. These files are not transferred.



You can remove wrongly selected files from the Session List by selecting the file in question with the mouse and clicking **Remove** (or choose the **Remove** command from the **File** menu).

Copying files

In the 726 Titroprocessor switch to the **File manager** and choose a storage location (softkey [**Change storage**]). Press the softkey [**Receive from RS**] and select an interface (**RS232 intface1** or **RS232 intface 2**).



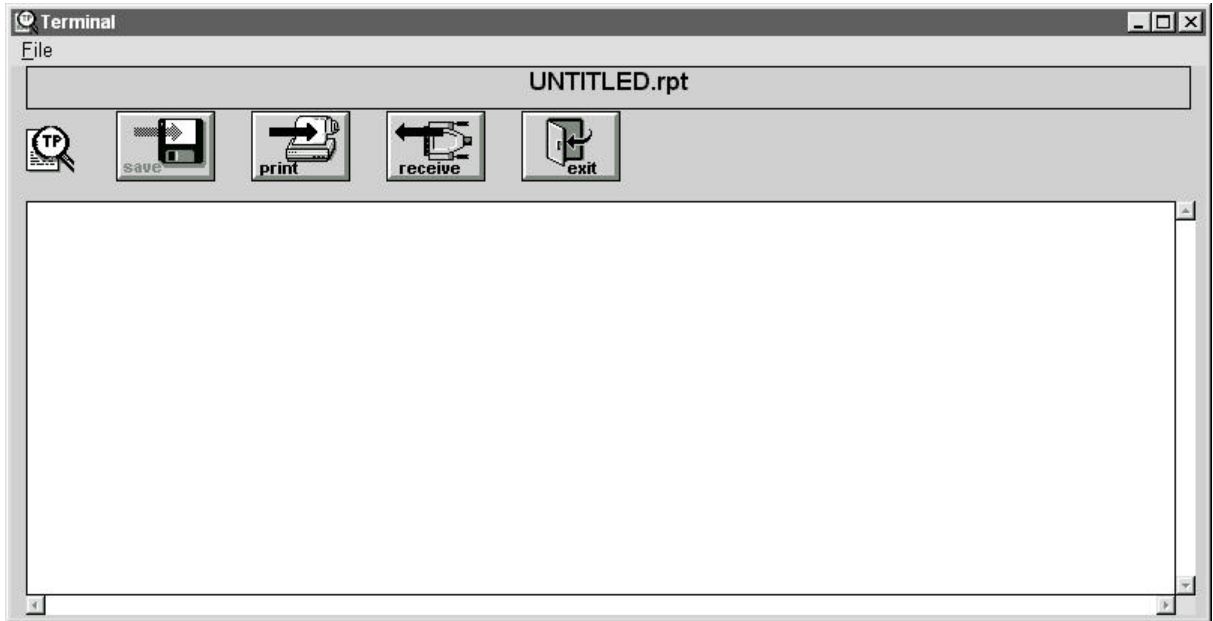
On the PC click the **Send** icon (or choose the **Send** command from the **File** menu).

The program now prompts you to ensure that the 726 Titroprocessor is ready to receive. Confirm the readiness to receive with **OK**. The files are now transferred. Every correctly transferred file is given the status "Sent OK".

3.6 Receiving reports

With the 726 TP Backup program it is possible to receive all reports (but not curves) of a determination. In contrast to binary files, reports – actually pure printer reports – must be received with the terminal program as they have neither checksums nor special headers that allow a check on correct transfer.

Start 726 TP Backup and choose the **Terminal** command from the **Session** menu. The following window appears on your screen.



In contrast to the normal **Receive** command, in the terminal mode the file is first received and then saved, automatic file naming is not possible.



Click **Receive** to set up the connection to the 726 Titroprocessor. **Stop** appears instead of the Receive icon.

The communication mode of the 726 Titroprocessor must be set to 'keyCTRL' or 'LIMS' to enable transmission of reports. Switch to the dialog page **Config. / Interfaces** to modify the corresponding setting.

Reports that you wish to be sent from the 726 Titroprocessor to the PC must be set up as follows:

* Report				
for	Type	Specification	print	send
Mode	*ShrtRes		no	yes
	SmplData		no	yes
			no	no

If a report has to be reproduced manually and saved on a PC, press the **<PRINT> key** on the Titroprocessor's keyboard, select the desired report type and press the **[Send]** softkey.

	Send	Print
--	------	-------

Reports are sent with a leading report label, such as 'fdr ('full determination results') or 'sd ('sample data') to identify the report type. The end of a single report is easy to recognize by the 'end' tag.

Multiple reports may be transferred and saved in a single file after termination of the data transmission (click **STOP**). Click **Save**, select the appropriate directory and assign a file name. Reports that are received may be printed directly.

4 Viewing ASCII files

4.1 Viewing files (View)

The reports generated by the 726 Titroprocessor can be opened for viewing, saved under different file names and printed out.

Choose the **Open** command from the **File** menu.

The entire ASCII file can be viewed using the scroll bars. It is not possible to edit the file.

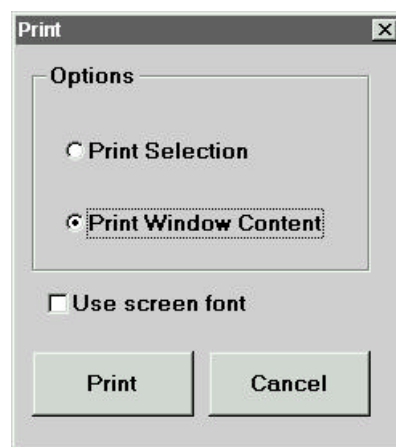
4.2 Printing files (Print)

It is also possible to print out entire files or selected blocks directly from the 726 TP Backup program.



If a file is loaded in the Terminal window, click **Print** (or choose the **Print** command from the **File** menu).

The following dialog window appears:



4.3 Use screen font

If this box is inactive, the reports are printed out using the standard font of the printer.

Activate this box if you wish the printer to print with the screen font.

To change the font, choose the **Viewer font** command from the **Configuration** menu. Select the desired font and font size and confirm with **OK**. If required, save the font in the Configuration menu with the **Save** command.

5 Details regarding operation

5.1 Saving files

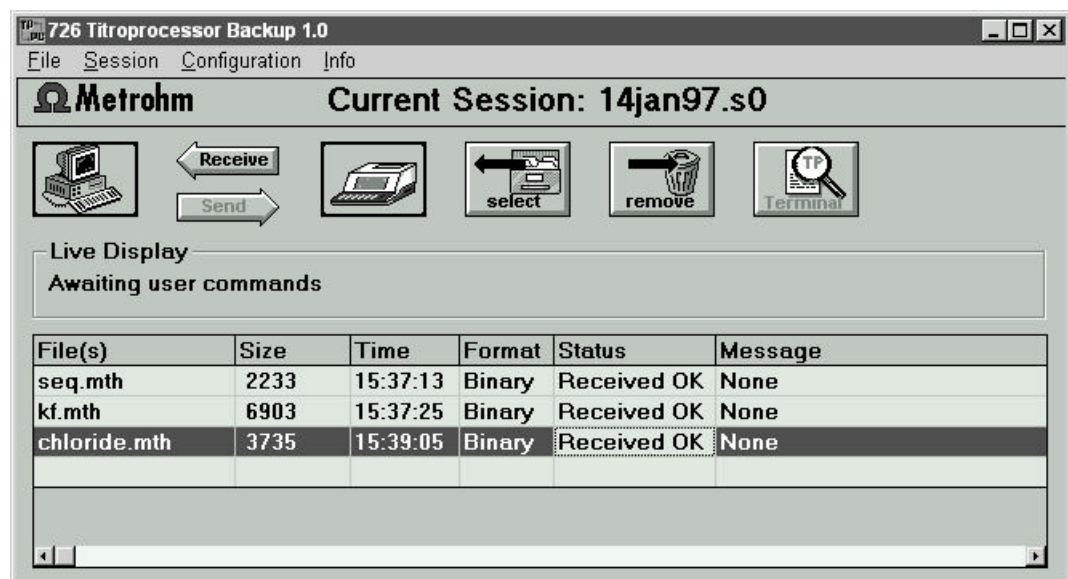
Except in terminal operation, the received files are automatically stored in the defined directory (→ Configuration).



Reports (ASCII files) can be saved in a freely selectable directory.

5.2 The Session List

The Session List provides information on the transferred files. While it is not necessary to save such a list, this may be helpful for managing files.



Example of a Session List

Files with the format designation "Binary" can be sent back to the 726 Titroprocessor. Use the scroll bar to view the directory of the individual files.

Saving the Session List

If necessary, the Session List can be saved. To do this, choose either **Save** or **Save as** from the **Session** menu. With the Save command, the Session List is saved under the automatically generated file name ("Current Session: "). If you wish to assign a name yourself, choose **Save as**.

Each time 726 TP Backup is started, a new Session List is opened. The file name comprises:

the date (for example, **14jan97.**) and the extension **.s0 to .s99**

to be able to distinguish different Session Lists during a day in a particular directory.

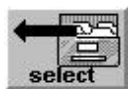
Opening a Session List

To open a new Session List, you can choose the **New** command from the **Session** menu. If the previous Session List in the current directory has already been saved, the number of the extension is automatically incremented by 1.

With the **Open** command from the **Session** menu, existing Session Lists can be opened for editing.

Editing a Session List

Files can be added to or removed from a Session List or the status can be changed (received files can be prepared for transfer).



To include stored files in the Session List, click **Select**, select the desired files by clicking them and confirm with **OK**. The files are now listed in the Session List. The status is "In queue", the file is ready for transfer.



To remove a file from the Session List, select it and click the **Remove** icon or press **Ctrl + M** (from the **File** menu: **Remove**). Files removed by mistake can be reinserted using **Select**.

Status messages and their meaning

Received OK	The file has been correctly transferred from the 726 Titroprocessor and saved on the PC.
Not received	Although the file has been sent by the 726 Titroprocessor, it could not be received or saved properly on the PC, e.g. because of an inadmissible file name.
In queue	File in the binary format of the 726 Titroprocessor, ready to be transferred.
Sent OK	The file has been correctly transferred from the PC to the 726 Titroprocessor.
Rejected	A file format has been detected that cannot be sent to the 726 Titroprocessor, e.g. an ASCII file.

Format

Binary	File in the format of the 726 Titroprocessor, can be reloaded.
ASCII	Designation for a report, cannot be reloaded. It can be viewed in 726 TP Backup or edited with other programs (e.g. word processors).
-	File that cannot be assigned to any of the formats described above.

5.3 TP Backup status

The 726 TP Backup program is able to work in the background. The small window **TP Backup Status** remains in the foreground and informs you of the status of the Backup program. As soon as a file is being transferred, the **Usage** line shows the file name and the percentage occupancy of the transmit buffer.

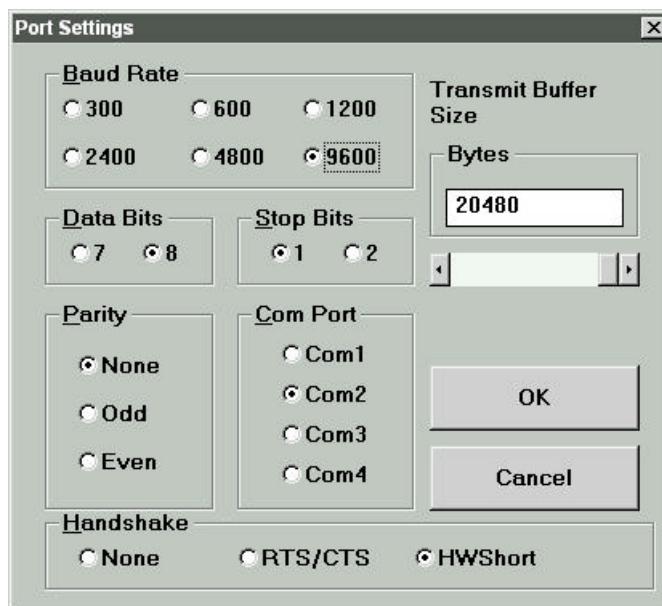


"Idle" tells you that the program is ready to receive.

If "Error" appears instead, the connection in the Backup program must be terminated (**Stop**). Ensure that the 726 Titroprocessor is no longer sending data (if you abort the transfer, it may be necessary to press the softkey **[Reset RS232 1]** (possibly **RS232 2**) on the **Configuration / Interfaces** page. Reset the Backup program to the receive mode and start the transfer from the 726 Titroprocessor.

5.4 The interface

This window is used to set the configuration for the RS232 interface. Open the window by choosing the **Port Settings** command from the **Configuration** menu.



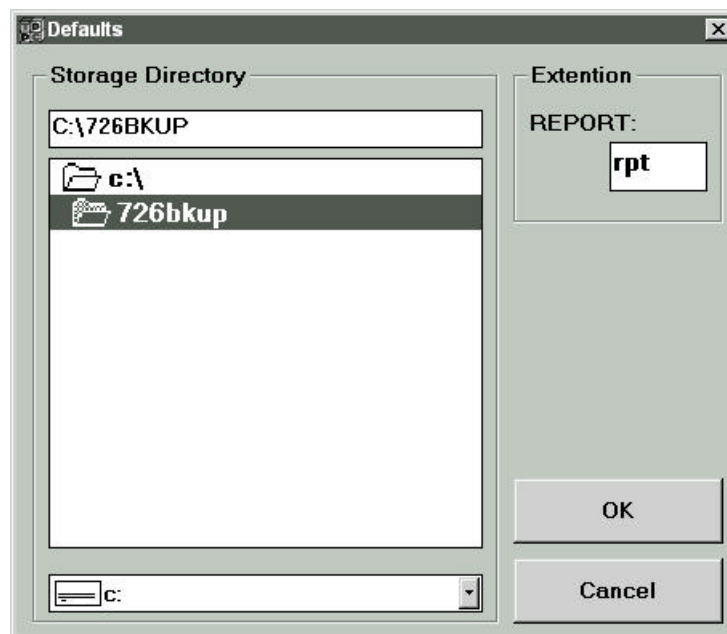
Transmit Buffer Size	Determines the size of the transmit buffer. Any value between 1024 and 20480 bytes can be entered. Select a relatively large buffer if computer-bound operations are being performed in parallel to the 726 TP Backup program. If the buffer size is too small and the other program requires too much computing power, the 726 Titroprocessor may output the error message "Send timeout". In such a case, wait until the PC is again "free" and then press r for "retry" on the 726 Titroprocessor. The transfer will be continued.
Handshake	With the 6.2125.060 Connecting cable, work should be performed only with HWshort.

If you wish to accept the changes, click **OK**. To return to the program without saving the changes, click **Cancel**.

Select **Save** from the **Configuration** menu to save the changes.

5.5 Default settings

In this window, the storage directory and the file name extensions for the ASCII files (**Reports**) are defined. Open the window by selecting the **Defaults** command from the **Configuration** menu.



Storage Directory	Storage directory for the 726 Titroprocessor binary files. If you wish to store the Session List file in the same directory, a new Session List must be opened after the modified directory has been confirmed with OK .
Report	File name extension for the ASCII files.

If you wish to accept the settings, click **OK**. To return to the program without changes, click **Cancel**.

Choose **Save** from the **Configuration** menu to save the changes.

To access the stored settings after changing the default settings, choose the **Retrieve** command from the **Configuration** menu.

6 Troubleshooting

Should problems arise during operation of the 726 TP Backup program, please first check whether

- the correct cable is used (see section 2.1)
- the cable is plugged into the correct socket (see section 2.3)
- the RS232 interface configurations on the computer and the 726 Titroprocessor match exactly.

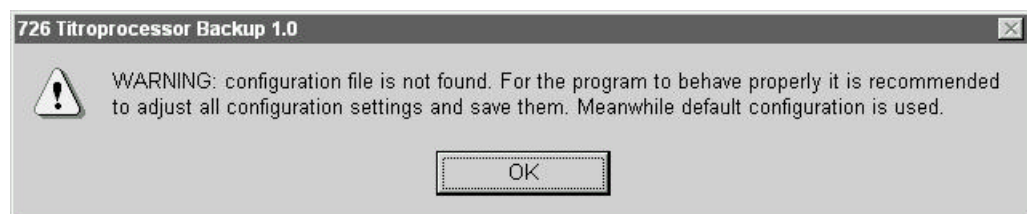
If the connection is terminated during a transfer, ensure that both the PC and the 726 Titroprocessor can no longer send. In the case of the 726 Titroprocessor, switch to the dialog page **Config. / Interfaces** and press – possibly several times – the softkey **[Reset RS232 1]** or **[Reset RS232 2]**.

In what follows, several of the most important error messages and warnings are described.

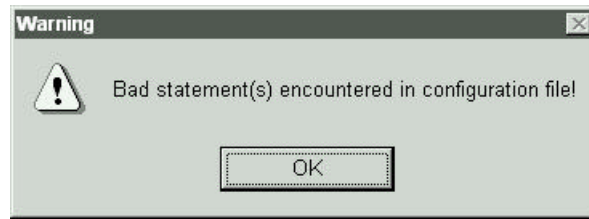
On starting



It is not possible to start the program twice. Confirm the message with **OK**.



This message appears if the **726bkup.ini** file does not exist. Confirm this message with **OK**, the program starts with the default settings. Set the configuration to suit your requirements (see section 2.3) and save the settings using the **Save** command in the **Configuration** menu.



This message appears if the **726bkup.ini** file has been found, but the entries are faulty. The program starts with the default settings. Set the configuration to suit your requirements (see section 2.3) and save the settings with the **Save** command in the **Configuration** menu.

Start of the transfer (receive)



This message appears if the COM interface of the PC is either already in use (e.g. mouse) or a connection cannot be established. Ensure that the connecting cable is plugged into the correct socket or change the settings in the **Configuration** menu in the dialog box **Port Settings**. Do not forget to save the altered settings (**Save** command from the **Configuration** menu).

Start of the transfer (send)



This message appears if the serial interface of the PC is either already in use (e.g. mouse) or a connection cannot be established. Ensure that the connecting cable is plugged into the proper socket or change the settings in the **Configuration** menu in the dialog box **Port Settings**. Do not forget to save the altered settings (**Save** command from the **Configuration** menu).

During the transfer (receive)



This message appears if no handshake is used and the transmit buffer is too small, for example because the PC cannot process (save) the incoming data at the present time. Confirm the message with **OK**, the transfer will be terminated. The transfer must also be aborted on the 726 Titroprocessor. To do this, switch to the dialog page **Config. / Interfaces** and press – possibly several times – the softkey **[Reset RS232 1]** or **[Reset RS232 2]**.

It is preferable to work with a handshake. If this is not possible for some reason or other, you should increase the size of the transmit buffer and ensure that the PC is free to receive the data during the transfer.



This message can have two causes: either the transfer was started at the 726 Titroprocessor *before* the PC was set to receive or inadmissible reports were sent.

Terminate the transfer (**Stop**) and reset the RS232 interface of the 726 Titroprocessor. To do this, switch to the dialog page **Config. / Interfaces** and press – possibly several times – the softkey **[Reset RS232 1]** or **[Reset RS232 2]**.

- In a transfer from the 726 Titroprocessor to the PC, ensure that you do not send data from the 726 Titroprocessor before you have clicked **Receive**.

7 License terms

This software is licensed to the purchaser for use on only one computer at a time. You may transfer the software to another computer provided the use of the software on the original computer is terminated. The use of the software in a computer network, file server or virtual disk is a violation of the license granted. We authorize you to make one backup or archive copy of the software for the sole purpose of protecting your investment from loss. You may not make copies of the manual nor alter or modify the software. The license and your right to use this software automatically terminate if you violate any part of the license.

Return the enclosed registration card to us as soon as possible so that we can register you as an official purchaser of the software. Only registered purchaser will receive any program updates at a special price.

If you have any questions concerning this license, please write to:

Metrohm Ltd.
Oberdorfstrasse 68
CH-9101 Herisau
Switzerland

8 Index

-	18
*.acf	8
*.cnf	8
*.dtm	8
*.mth	8
*.rck	8
*.slo	8
<PRINT>	14
726 Titroprocessor	2, 4, 8, 11
726bkup.ini	7, 22, 23

A

Access configuration	8
ASCII	11, 15, 18
ASCII files	15, 16, 20
Auto save	2, 10
Automated data transfer	10

B

Backing up	8
Backup status	19
Bad statement	23
Baud rate	5
Binary	16, 18
Binary data	11
Binary files	2, 7, 11
Buffer size	20

C

Change storage	9, 12
COM	5, 6
Commun. mode	5
Communication Int.	5
Communication mode	5
Configuration	2, 4, 15, 19
Configuration file	8
Connecting cable	3
Connection	9, 10, 13
Contents	1
Copying files	11, 12
Ctrl + M	17

D

Damage	3
Data bits	5
Data transfer	5, 8, 10
Default settings	20, 23
Defaults	7
Destination	2, 10
Determinations	2, 8, 10
Device unavailable	23

DOS	3, 8
-----	------

E

Editing a Session List	17
Error	19, 24

F

FIFO	6
File backup	9
File Format	18
File name	7, 8, 11, 15
File name extension	17
Format	18
Framing error	23

H

Handshake	5, 20, 24
Hard disk	3
HWshort	5, 20

I

Idle	19
In queue	17, 18
Installation	3
Installation of the program	4
InstallShield	4
Interface	4, 5, 6, 12, 19
Introduction	2

K

keyCTRL	5, 13
---------	-------

L

License	25
LIMS	13

M

Main Page	9, 10
Managing files	16
Methods	2, 8, 11
Mouse	3

N

New	17
Not received	18

O

Open	11, 15, 17
Opening a Session List	17
Operating system	3
Overflow	24

P

Parity	5
Port Settings	4, 19
Previous instance	22
Print	14, 15
Printing files	15
Problems	22
Program version	2, 3
Put in queue	11

Q

Queue	11, 17
-------------	--------

R

Rack data file.....	8
RAM	3
Receive	9, 10, 12, 13
Receive buffer	24
Receive mode	5
Received OK	18
Receiving reports	13
Registration card	25
Rejected	18
Remove	17
Remove selected files	11
Report	21
Report files	7
Report label	14
Report type	14
Reports	16, 20
Reset RS232	19
Retrieve	7
RS232	2, 3, 4, 5, 9, 10, 12
RS232 cable	9, 11
RS232 Intface	9

S

Sample silos	2, 8
Save	6, 7, 14, 15, 16
Saving files	16
Saving the Session List	16
Screen font	15
Select	9, 11
Send	9, 12, 14
Send timeout	20
Sent OK	18
Session list	11, 16
Setup	3, 4
Special characters	8
Status	2, 11, 12
Status messages	18
Stop bit	5
Storage Directory	21
Storage location	9, 11, 12
System requirements	3

T

Terminal	7, 13, 15
Terminate the connection	9
Text file	11
Transmit buffer	6, 19, 20, 24
Troubleshooting	22

U

Updates	25
Usage	19

V

View	15
Viewer font	7, 15
Viewing files	15

W

Windows 3.1x	3, 4
Windows 95	3, 4
Windows NT 4.0	3, 4