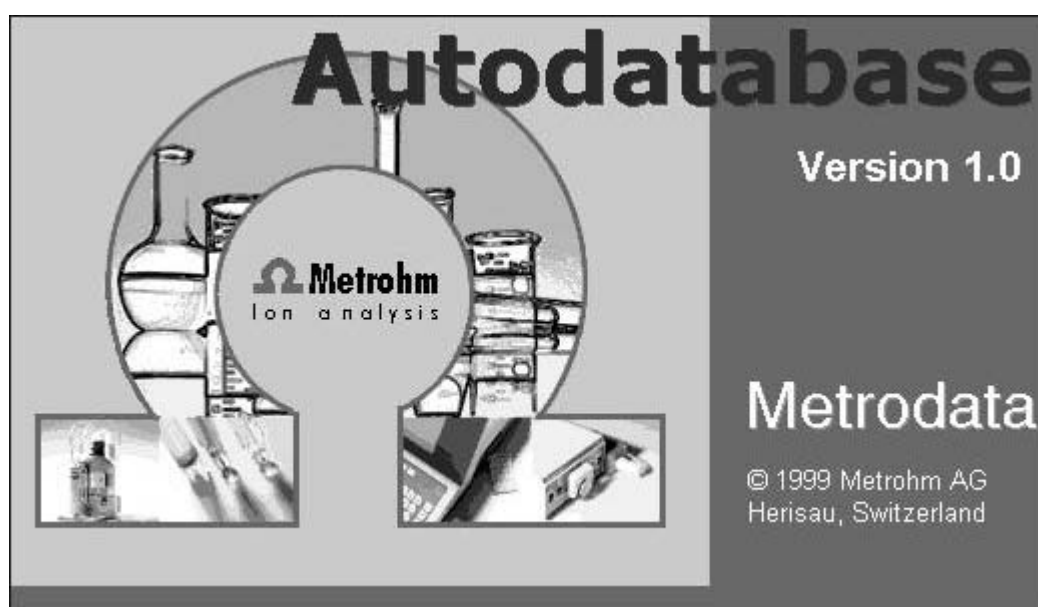


# Autodatabase 1.0



Software Manual

8.110.8213





Metrohm AG  
CH-9100 Herisau  
Switzerland  
Phone +41 71 353 85 85  
Fax +41 71 353 89 01  
info@metrohm.com  
www.metrohm.com

# **Autodatabase 1.0**

## **Software Manual**

Teachware  
Metrohm AG  
CH-9100 Herisau  
teachware@metrohm.com

This documentation is protected by copyright. All rights reserved.

Although all the information given in this documentation has been checked with great care, errors cannot be entirely excluded. Should you notice any mistakes please send us your comments using the address given above.

Documentation in additional languages can be found on  
<http://documents.metrohm.com>.

# Table of contents

<b>1</b>	<b>Introduction</b>	<b>1</b>
1.1	Purpose of program	1
1.2	Notation and pictograms	1
1.3	Installation	2
1.3.1	Hardware requirements for the PC	2
1.3.2	Software Installation	2
1.3.3	Software deinstallation	2
1.3.4	Registration	2
1.4	Overview	3
1.4.1	Overview of program windows	3
1.4.2	File types of Autodatabase	3
1.4.3	Export file types	4
1.4.4	Context-sensitive menus	4
1.4.5	Help	4
<b>2</b>	<b>Main window</b>	<b>5</b>
2.1	Main Window overview	5
2.2	Starting/closing the program	5
2.2.1	Starting the Autodatabase program	5
2.2.2	Closing the Autodatabase program	5
2.3	Databases	6
2.3.1	Database organization	6
2.3.2	Handling of databases	6
2.3.3	Import determinations from IC program	7
2.3.4	Send determinations to IC program	7
2.3.5	Backup database files	7
2.4	Filtering and sorting	8
2.4.1	Handling of filter files	8
2.4.2	Filter designer	9
2.5	Options and windows	11
2.5.1	General preferences	11
2.5.2	Opening of windows	11
<b>3</b>	<b>Explorer</b>	<b>13</b>
3.1	Explorer window	13
3.1.1	Explorer window overview	13
3.1.2	Opening/closing the Explorer window	13
3.1.3	Explorer items	13
3.2	Display of curves	14
3.2.1	Display of chromatogram curves	14
3.2.2	Display of calibration curves	15
3.2.3	Display of overlay curves	15

3.3	<b>Export of curves</b> .....	<b>16</b>
3.3.1	Copy curves to clipboard.....	16
3.3.2	Export of curves as graphic files.....	16
3.4	<b>Printing of curves</b> .....	<b>17</b>
3.4.1	Print curves .....	17
3.4.2	Curves print preview .....	17
3.4.3	Page setup.....	18
<b>4</b>	<b>Report</b> .....	<b>19</b>
4.1	<b>Report window</b> .....	<b>19</b>
4.1.1	Report window overview .....	19
4.1.2	Opening/closing of the Report window.....	19
4.2	<b>Report window functions</b> .....	<b>19</b>
4.2.1	Load report template .....	19
4.2.2	Edit report template .....	20
4.2.3	Data selection .....	20
4.3	<b>Export of reports</b> .....	<b>20</b>
4.3.1	Copy reports to clipboard.....	20
4.3.2	Export reports .....	20
4.4	<b>Printing of reports</b> .....	<b>21</b>
4.4.1	Print report .....	21
4.4.2	Report print preview.....	21
4.5	<b>Report Generator window</b> .....	<b>22</b>
4.5.1	Report Generator window overview .....	22
4.5.2	Opening/closing of the Report Generator window.....	22
4.6	<b>Report Generator functions</b> .....	<b>23</b>
4.6.1	Handling of report template files.....	23
4.6.2	Show data records.....	23
4.7	<b>Design report templates</b> .....	<b>24</b>
4.7.1	Report page setup .....	24
4.7.2	Defining template regions.....	25
4.7.3	Text labels .....	25
4.7.4	Text fields.....	27
4.7.5	Graphic fields.....	29
4.7.6	Table fields.....	30
4.7.7	Bitmap fields .....	33
4.7.8	Metafile fields .....	34
<b>5</b>	<b>Appendix</b> .....	<b>35</b>
5.1	<b>Software license</b> .....	<b>35</b>
5.2	<b>Ordering designations</b> .....	<b>35</b>
5.3	<b>Index</b> .....	<b>36</b>




# 1 Introduction

## 1.1 Purpose of program

«**Autodatabase 1.0**» is a database tool for archiving and administration of chromatograms and results produced with the «**IC Net 2.0**» and «**761 Compact IC 1.1**» programs. All measurement data sent by the programs is stored in a database. This data can be sorted and filtered with the help of different criteria. All curves and reports can be displayed and printed out. With the Report Generator it is possible to create format reports for single determinations and also table reports for a summary of sample series.

## 1.2 Notation and pictograms

The following notations are used in this software manual:

Range	<b>Menu item, parameter or entry value</b>
REPORT	<b>Program window</b>
<OK>	<b>Button</b>
[ Ctrl ]	<b>Key</b>
	<b>Warning</b> This symbol draws attention to possible damage to instruments or instrument parts if the associated directions are not followed correctly.
	<b>Caution</b> This symbol marks important information. First read the associated directions before you continue.
	<b>Comment</b> This symbol marks additional information and tips.

## 1.3 Installation

### 1.3.1 Hardware requirements for the PC

Computer	Pentium II with 200 MHz or higher
Operating system	Windows <sup>®</sup> 95, Windows <sup>®</sup> 98, or Windows <sup>®</sup> NT
Free space on hard disk	5 MB for program files 50 MB recommended for data files
Working memory RAM	32 MB, recommended 64 MB
Graphics resolution	800×600, better 1024×768 or more
Printer	Any printer supported by the operating system

### 1.3.2 Software Installation

Insert installation CD into CD drive. Select <Start> and **Run**. Find the file **setup.exe** on the CD and click on <OK>. Click on **IC Net** or **761** in the selection menu and follow the setup program instructions.

The «**Autodatabase 1.0**» program will be installed in the desired directory in addition to the software packages «**IC Net 2.0**» or «**761 Compact IC 1.1**». Icons are created in the program folder, the startup folder and on the desktop. In addition to the program files of the «Autodatabase» program, the following folders are installed:

#### Filters

Folder for storage of filter criteria files (\*.flt).

#### Report templates

Folder for storage of custom report files (\*.rt) with examples.

#### User database

Folder for storage of database files (\*.adb) with a demo database.

### 1.3.3 Software deinstallation

Select <Start> / **Settings** / **Control panel**. Double-click the **Software** icon. Select **Metrohm IC Net 2.0** or **761 Compact IC version 1.1** in the list and click on <Add/remove>. All program files and icons should be removed.

### 1.3.4 Registration

Please send us your **Registration card** as soon as possible so we can register you as an official user. Only registered users will get updated program versions at a special price.

## 1.4 Overview

### 1.4.1 Overview of program windows

«Autodatabase 1.0» consists of different windows whose functionality is linked together. The different windows are:

<b>MAIN WINDOW</b>	Administration of databases, display of subwindows.
<b>EXPLORER</b>	File manager view of database.
<b>CHROMATOGRAM</b>	Display of chromatogram curve.
<b>GRAPH</b>	Display of calibration graph.
<b>REPORT</b>	Display of user definable reports.
<b>REPORT GENERATOR</b>	Creation of user definable reports.
<b>CHROMATOGRAMS</b>	Tabular view of chromatogram and passport data for all determinations.
<b>INTEGRATION EVENTS</b>	Display of integration events.
<b>PEAK</b>	Display of peak results.
<b>CALIBRATION GRAPH</b>	Display of calibration graph data.
<b>COMMENT</b>	Display of comment.
<b>GLP LOG</b>	Display of GLP log.
<b>DATA LOG</b>	Display of data log.

### 1.4.2 File types of Autodatabase

The following file types are produced automatically by the «Autodatabase» program when a new database is created:

<b>*.adb</b>	<b>Autodatabase file</b> Contains chromatogram and method data of all determinations.
<b>*.id</b>	<b>Configuration file</b> Contains all current settings of the VA Database program and its windows.
<b>*.db</b>	<b>Database file</b> Paradox database file.
<b>*.mb</b>	<b>Database file</b> Paradox database file with blob fields (curves, binary determination file, etc.).
<b>*.px</b>	<b>Special database file</b> Special index file created automatically.



*These 5 files on the hard disk should never be renamed with the Windows Explorer or another file manager tool. For this purpose the function **Save As...** should be used.*

The following file types are produced by the Autodatabase program when saving templates or filter definitions:

- \*.rt**            **Report template**  
Template file for Report Generator.
- \*.flt**           **Filtering criteria file**  
Special file for storing defined filtering criteria (see *section 2.4.1*).

### 1.4.3 Export file types


The following file types can be exported by the «Autodatabase» program:

- \*.txt**            **ASCII text file**  
ASCII text file format for export of text reports (see *section 4.3.1*).
- \*.emf**           **Enhanced Windows metafile**  
Graphic file format for export of curve subwindows (see *section 3.3.2 and section 4.3.2*).
- \*.bmp**           **Bitmap file**  
Graphic file format for export of curve subwindows (see *section 3.3.2 and section 4.3.2*).

### 1.4.4 Context-sensitive menus

Most of the menu functions of the program windows or subwindows are also accessible by clicking on the desired window or item and pressing the **right mouse button**. The pop up windows have different contents and functions depending on the selected active window or item type.

### 1.4.5 Help

By clicking on  , by selecting the **Help / Contents** menu item, or by pressing the [ F1 ] key you can get on-line help on the current topic anywhere in the program.

- Green texts*            can be clicked to jump to a different Help topic.
- Violet texts*           identify the dialog item, parameter or button in the corresponding window.
- Blue texts*            identify important information.

## 2 Main window

### 2.1 Main Window overview

The **MAIN WINDOW** is the center of the «Autodatabase» software. From here the current working database is opened. In the window detailed information about the stored determinations (reports, chromatograms, and calibration curves) can be displayed in subwindows. The content of the displayed subwindows can be printed and exported. The other Autodatabase windows are also opened from the **MAIN WINDOW**.

### 2.2 Starting/closing the program

#### 2.2.1 Starting the Autodatabase program




##### Start the Program

Double-click the Autodatabase icon or the **AutoDB.exe** file to start the «Autodatabase 1.0» program.

#### 2.2.2 Closing the Autodatabase program

##### MAIN WINDOW / File / Exit

Quit the «Autodatabase 1.0» program. The current database will be closed and saved (the same function can be done by pressing the  button of the **MAIN WINDOW**).

## 2.3 Databases

### 2.3.1 Database organization

Each database consists of the 5 files \*.adb, \*.id, \*.mb, \*.db, \*.px, which are created automatically when a new database is created (see also *section 1.4.2*). All changes in the database will be stored immediately to this 5 files on the hard disk.



*These five files on the hard disk should never be renamed with the Windows Explorer or another file manager tool. For this purpose the function **Save As...** should be used.*

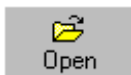
The current working database may be different from databases opened in background for data transfer.

### 2.3.2 Handling of databases



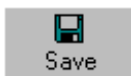
**MAIN WINDOW / File / New...**

Create a new database. The **Create new Autodatabase file** window appears where the name of the database file (\*.adb) and its directory have to be entered. Then the new database will be opened.



**MAIN WINDOW / File / Open...**

Open an existing database. The **Open Autodatabase file** window appears where the name of the database file (\*.adb) and its directory have to be selected.

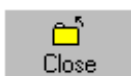


**MAIN WINDOW / File / Save**

Save the current database.

**MAIN WINDOW / File / Save Database As...**

Save the current database under a new name. The **Save Autodatabase file as** window appears where the name of the database file (\*.adb) and its directory have to be entered.



**MAIN WINDOW / File / Close**

Close the current database.

**MAIN WINDOW / File / 1 ... #**

The list of the previous opened databases. When an entry of the list is clicked on the corresponding database will be opened.

### 2.3.3 Import determinations from IC program

The import of determinations from the IC programs «**IC Net**» and «**761 Compact IC**» must be done by sending the determinations from these programs to «**Autodatabase**». For details see on-line help of «**IC Net**» and «**761 Compact IC**».

### 2.3.4 Send determinations to IC program



Send the determinations selected in the **REPORT** window to the IC program «**IC Net**» and «**761 Compact IC**».

The <**Send**> button is only available if the IC program has been started and the **Options / Indicate AutoDB server** option has been enabled.

### 2.3.5 Backup database files

Changes in the database will be stored immediately to the 5 database files \*.adb, \*.id, \*.mb, \*.db, \*.px on the hard disk and can not be canceled by an undo function. So if you want to return to a former version of the database, this database must have been copied before by means of the function **Save As...** under a new name. This backup copy can then be opened again and stored under the original name with **Save As...** .



*These five files on the hard disk should never be renamed with the Windows Explorer or another file manager tool. For this purpose the function **Save As...** should be used.*

## 2.4 Filtering and sorting

### 2.4.1 Handling of filter files

Filters can be used for filtering and sorting of determinations displayed in the **EXPLORER** and **REPORT** windows. The filtering and sorting criteria can be stored in a special filtering criteria file (\*.flt).



#### MAIN WINDOW / Data / Filter / New

The **Filter designer** window (see *section 2.4.2*) will be opened for entry of new or editing of existing filtering criteria. After closing this window the determinations are filtered. The filtering expression is shown in the pop-up field below the toolbar, where the 10 previously defined filtering expressions can be easily selected.



#### MAIN WINDOW / Data / Filter / New

The **Filter designer** window (see *section 2.4.2*) will be opened for entry of new or editing of existing filtering criteria. After closing this window the determinations are filtered. The filtering expression is shown in the pop-up field below the toolbar, where the 10 previously defined filtering expressions can be easily selected.



#### MAIN WINDOW / Data / Filter / Load

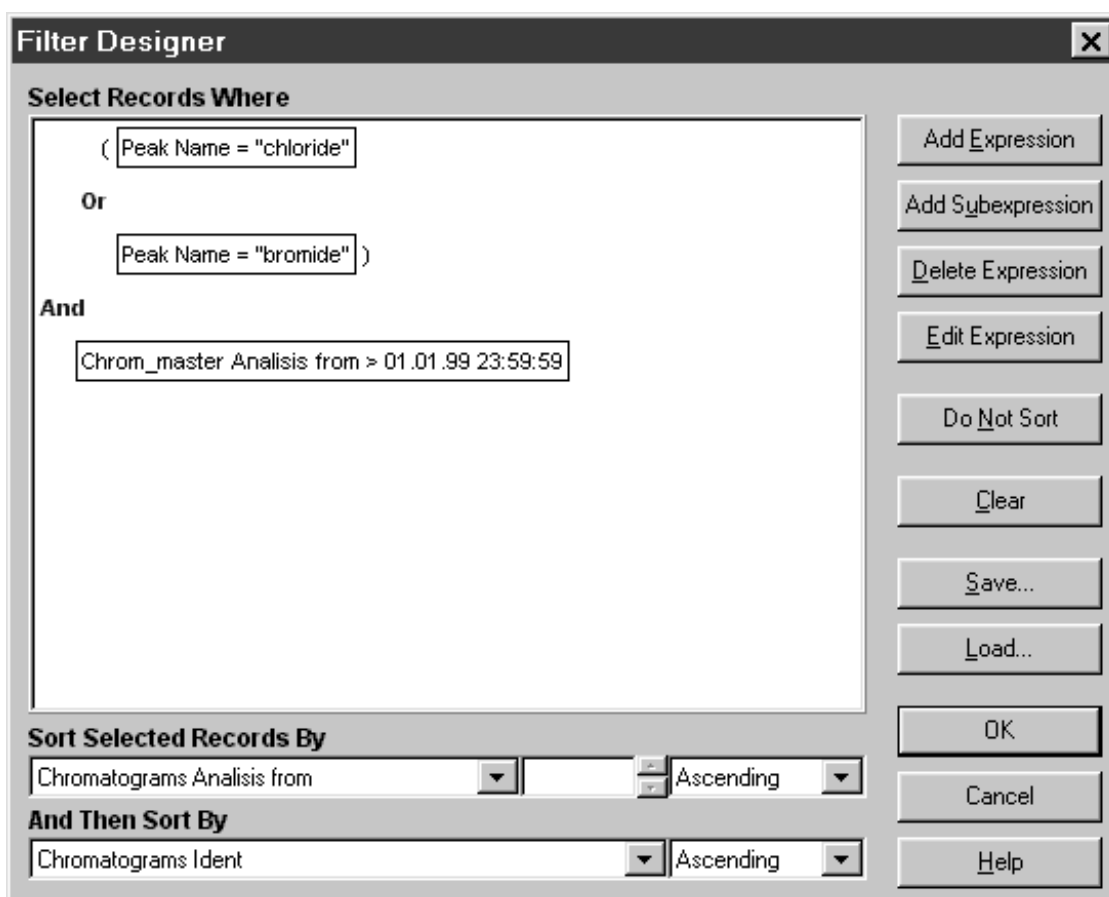
Load an existing filtering criteria file (\*.flt) and filter the determinations. The filtering expression is shown in the pop-up field below the toolbar, where the 10 previously defined filtering expressions can be easily selected.



Delete the applied filtering and sorting criteria and select all determinations.

### 2.4.2 Filter designer

The **Filter designer** window is used for entering and modifying filtering and sorting criteria which can be saved in a special filtering criteria file (\*.flt).



#### Filtering criteria

##### Select Records Where

Tree view of all defined filtering criteria with expressions and subexpressions. The selected expression is highlighted. The filtering criteria can contain the following items:

- Logical Operator** Selection of the logical operators **And**, **Or**, **And Not**, **Or Not**. The first expression has no operator.
- Field** Selection of a database field for the logical expression.
- Comparison Operator** Selection of one of the following comparison operators: =, <>, <, <=, >, >=
- Value** Entry of a numeric or alphanumeric value for comparison.

<Add <u>E</u> xpression>	Add a new expression to the filtering criteria in the same hierarchy level as the selected expression.
<Add <u>S</u> ubexpression>	Add a new expression to the filtering criteria in the next lower hierarchy level as the selected expression (this corresponds to entering a bracket in the filtering criteria expression).
< <u>D</u> elete Expression>	Delete selected expression or subexpression.
<Edit Expression>	Edit the selected expression or subexpression.

### Sorting criteria

Sort Selected Records By	Selection of a database field for main sorting of the determinations. The sorting order can be set to <b>A</b> scending or <b>D</b> escending.
And Then Sort By	Selection of a database field for further sorting of the determinations. The sorting order can be set to <b>A</b> scending or <b>D</b> escending.
<Do <u>N</u> ot Sort>	Deactivate the sorting function.

### Buttons

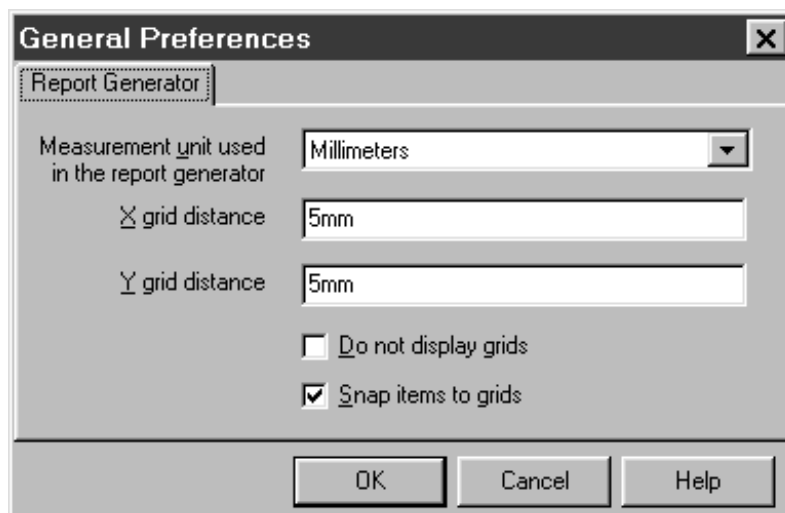
<Clear>	Clear all filtering and sorting criteria.
<Save>	Save the filtering and sorting criteria to a file with extension <b>*.flt</b> into the <b>Filters</b> directory.
<Load>	Load the filtering and sorting criteria from a previously stored file with extension <b>*.flt</b> from the <b>Filters</b> directory.
<OK>	Filter and sort the determinations according to the set filtering and sorting criteria. The filtering expression is shown in the pop-up field below the toolbar, where the 10 previously defined filtering expressions can be easily selected.

## 2.5 Options and windows

### 2.5.1 General preferences

MAIN WINDOW / Settings / General Preferences...

In the **General Preferences** window the default settings for the Report Generator can be defined with the **Report Generator** tab:



Selection of measurement unit, grid size, grid display and snapping of items to grids.

### 2.5.2 Opening of windows



MAIN WINDOW / Window / Report

The **REPORT** window will be opened or (if it is already open) put on top.



MAIN WINDOW / Window / Explorer

The **EXPLORER** window will be opened or (if it is already open) put on top.

MAIN WINDOW / Table / Chromatograms

The **CHROMATOGRAMS** window will be opened or (if it is already open) put on top. It shows a tabular view of chromatogram and passport data for all determinations.

MAIN WINDOW / Table / Integration Events

The **INTEGRATION EVENTS** window will be opened or (if it is already open) put on top. It shows the integration events for the selected determination.

### **MAIN WINDOW / Table / Peak**

The **PEAK** window will be opened or (if it is already open) put on top. It shows peak results for the selected determination.

### **MAIN WINDOW / Table / Calibration Graph**

The **CALIBRATION GRAPH** window will be opened or (if it is already open) put on top. It shows the calibration graph data for the selected determination.

### **MAIN WINDOW / Table / Comment**

The **COMMENT** window will be opened or (if it is already open) put on top. It shows the comment for the selected determination.

### **MAIN WINDOW / Table / GLP Log**

The **GLP LOG** window will be opened or (if it is already open) put on top. It shows the GLP Log for the selected determination.

### **MAIN WINDOW / Table / Data Log**

The **DATA LOG** window will be opened or (if it is already open) put on top. It shows the Data Log for the selected determination.

## 3 Explorer

### 3.1 Explorer window

#### 3.1.1 Explorer window overview

The **EXPLORER** window displays the content of the database in a file manager way (tree view). Detailed information about the determinations is accessible by expanding the different branches of the tree. From the **EXPLORER** window, single or overlay curves can be opened directly in the **MAIN WINDOW**.


**EXPLORER** and **REPORT** are linked. If an entry in the **EXPLORER** is marked the pointer in the **REPORT** jumps automatically to this determination and vice versa.

#### 3.1.2 Opening/closing the Explorer window












**MAIN WINDOW / Window / Explorer**

The **EXPLORER** window will be opened or (if it is already open) put on top.

The **EXPLORER** window will be closed by pressing the  button of the **EXPLORER** window.

#### 3.1.3 Explorer items

-  **Open next level**  
Open this expandable level of the tree by clicking on the "+" sign.
-  **Close this level**  
Close this expanded level of the tree by clicking on the "-" sign.
-  **System information**  
Folder with method passport and integration parameters.
-  **Integration events**  
Folder with integration events.
-  **Peak**  
Folder with peak results.

-  **Graphics**  
Folder with chromatogram and calibration curves.
-  **Comment**  
Method comment.
-  **GLP Log**  
Folder with GLP Log messages.
-  **Data Log**  
Folder with GLP Log messages.

## 3.2 Display of curves

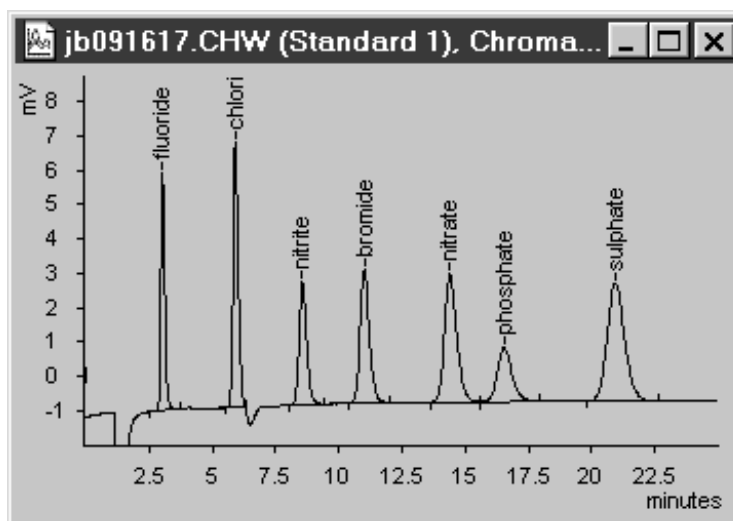
### 3.2.1 Display of chromatogram curves



#### EXPLORER / View graphic

Open a subwindow in the **MAIN WINDOW** which shows the chromatogram of the selected determination.

The curve window can also be opened by drag and drop of the chromatogram item directly to an empty space of the **MAIN WINDOW**.



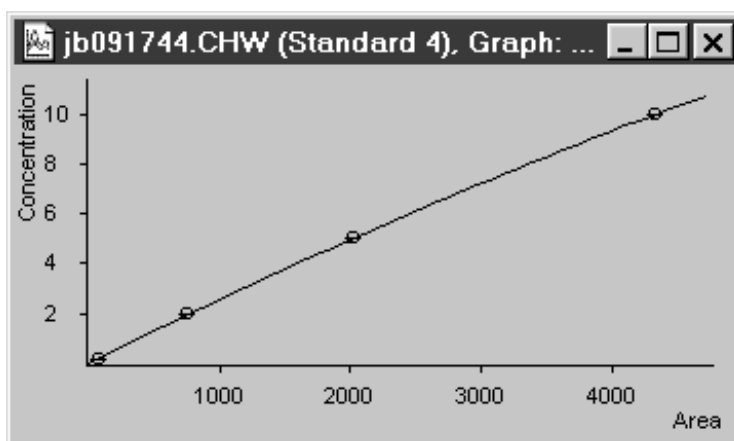
### 3.2.2 Display of calibration curves



#### EXPLORER / View graphic

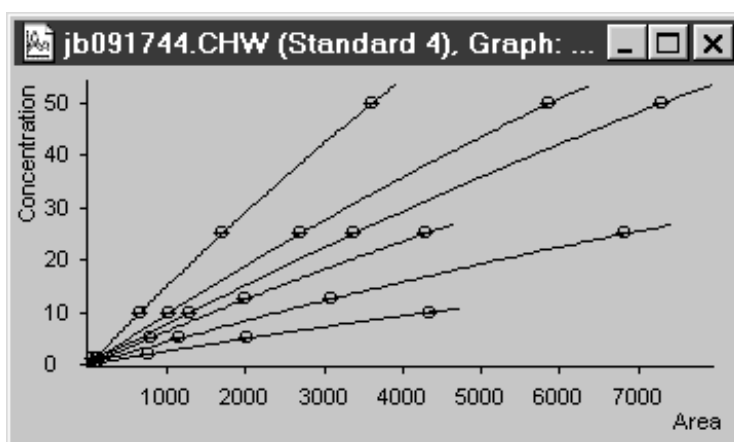
Open a subwindow in the **MAIN WINDOW** which shows the selected calibration curve of the selected determination.

The calibration curve window can also be opened by drag and drop of the calibration curve item directly to an empty space of the **MAIN WINDOW**.



### 3.2.3 Display of overlay curves

Overlay curves of several chromatogram or calibration curves can be opened by drag and drop of the graphic items directly into an open curve window in the **MAIN WINDOW**.



### 3.3 Export of curves

#### 3.3.1 Copy curves to clipboard

##### Copy (Ctrl+C)

By clicking this menu item of the context-sensitive menu in the curve window, the curve is copied to the clipboard.



*With Autodatabase under Windows 95 and Windows 98, curves are copied to the clipboard in square size. If you import the curves into other programs from the clipboard, always resize the graphic window to its initial aspect ratio, otherwise axes, labels, and texts are not displayed correctly. Alternatively, export and import the curve in the \*.emf or \*.bmp format where the aspect ratio is retained.*

#### 3.3.2 Export of curves as graphic files

##### Save As Metafile... (\*.emf)

##### Save As Bitmap... (\*.bmp)

By clicking this menu items of the context-sensitive menu in the curve window, the content of the current curve subwindow will be saved as a graphics file on the hard disk. The destination directory and the file name have to be entered in the appearing **SAVE AS** window. The graphics file can be imported into other programs like Microsoft Word or Excel.



*Some programs (e.g. Microsoft Word 6 and 7) cannot import of files in the \*.emf format. In this case, export and import the curve in the \*.bmp format.*

## 3.4 Printing of curves

### 3.4.1 Print curves







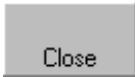
#### Print... (Ctrl+P)

By clicking this menu item of the context-sensitive menu in the curve window, the content of the selected subwindow is printed. The number of prints and the pages to be printed can be selected in the appearing **PRINT** window which depends on the selected printer.

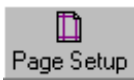
### 3.4.2 Curves print preview

#### Print Preview

By clicking this menu item of the context-sensitive menu in the curve window, the **PRINT PREVIEW** window appears. The content of the current curve window is shown in the appearance formatted for the desired printer. The following functions are available by pressing the corresponding buttons in the **PRINT PREVIEW** window or selecting the menu items in the context-sensitive menu:

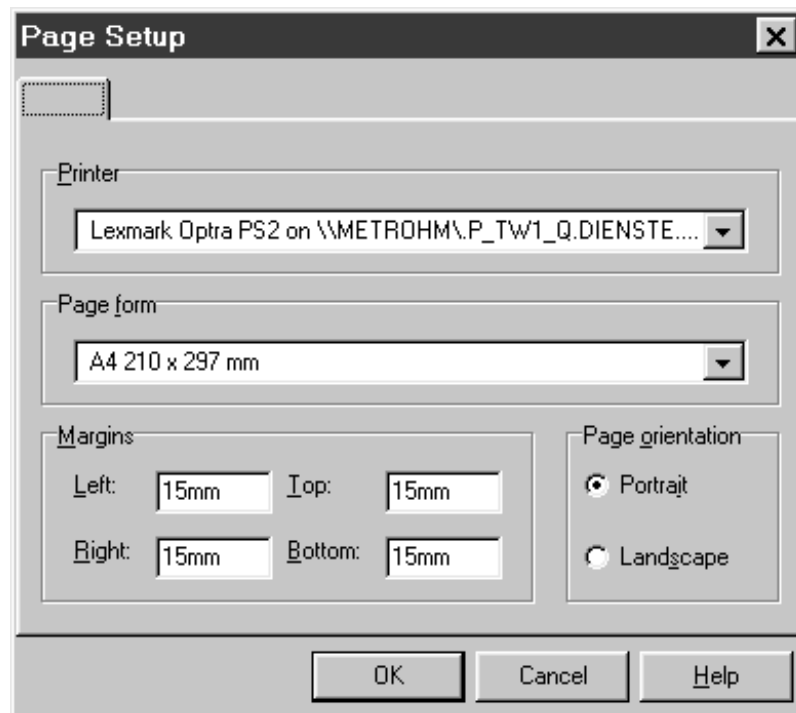
	<b><u>F</u>irst Page</b>	Go to first page.
	<b><u>P</u>revious Page</b>	Go to previous page.
	<b><u>N</u>ext Page</b>	Go to next page.
	<b><u>L</u>ast Page</b>	Go to last page.
	<b><u>P</u>rint...</b>	See <i>section 3.4.1</i> .
	<b><u>P</u>age <u>S</u>etup...</b>	See <i>section 3.4.3</i> .
	<b><u>C</u>lose</b>	Close preview window.

### 3.4.3 Page setup



#### Page Setup...

By clicking this menu item of the context-sensitive menu in the print preview window, the **Page setup** window appears:



<b>Printer</b>	Selection of printer.
<b>Page form</b>	Selection of paper size.
<b>Margins</b>	Selection of left, right, top, and bottom margin.
<b>Page orientation</b>	Selection of <b>Portrait</b> or <b>Landscape</b> page format.

# 4 Report

## 4.1 Report window

### 4.1.1 Report window overview

The **REPORT** window displays custom reports containing selected fields and curves of the database. Templates for custom reports are created by the user in the **REPORT GENERATOR** window (see *section 4.5*) and stored in a report template file \*.rt. Based on the determination data stored in the database, the fields in the template are filled automatically with the corresponding data (text or graphics) as soon as a specific determination in the **EXPLORER** window has been selected.


Report templates can be used for creating user defined printouts but also for a fast browsing of the analysis results. With a suitable template all important results and curves are shown in an window.

### 4.1.2 Opening/closing of the Report window



**MAIN WINDOW / Window / Report**

The **REPORT** window will be opened or (if it is already open) put on top.

The **REPORT** window will be closed by pressing the  button of the **REPORT**

## 4.2 Report window functions

### 4.2.1 Load report template



**Load template**

The **Open report template** window opens. After selection of the report template file (\*.rt) and clicking on **<Open>**, the report template is opened in the **REPORT** window.

## 4.2.2 Edit report template



Edit...

The **REPORT GENERATOR** window opens for modification of an existing or creation of a new report template (see *section 4.7*).

## 4.2.3 Data selection



Select All

Select all determinations of the report.



Deselect All

Deselect the selected determinations in the report.

## 4.3 Export of reports

### 4.3.1 Copy reports to clipboard



Copy (Ctrl+C)

Copy the report to the clipboard in a graphic format.

Copy As Text

Copy the report to the clipboard in a text format.

### 4.3.2 Export reports

Export As Metafile... (\*.emf)

By clicking this menu item of the context-sensitive menu in the **REPORT** window, the selected data records will be saved as a graphic file (\*.emf) on the hard disk. The destination directory and the file name have to be entered in the appearing **SAVE AS** window. The graphics file can be imported into other programs like Microsoft Word or Excel.

Export As Text... (\*.txt)

By clicking this menu item of the context-sensitive menu in the **REPORT** window, the selected data records will be saved as a text file (\*.txt) or on the hard disk. The destination directory and the file name have to be entered in the appearing **SAVE AS** window. The graphics file can be imported into other programs like Microsoft Word or Excel.

## 4.4 Printing of reports

### 4.4.1 Print report



#### Print... (Ctrl+P)

Print the selected data records of the report. The number of prints and the pages to be printed can be selected in the appearing **PRINT** window which depends on the selected printer.

### 4.4.2 Report print preview



#### Print Preview

Open the **PRINT PREVIEW** window. The selected data records of the **REPORT** window are shown in the appearance formatted for the desired printer. The following functions are available by pressing the corresponding buttons in the **PRINT PREVIEW** window or selecting the menu items in the context-sensitive menu:



#### First Page

Go to first page.



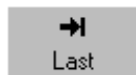
#### Previous Page

Go to previous page.



#### Next Page

Go to next page.



#### Last Page

Go to last page.



#### Print...

See *section 4.4.1*.



#### Page Setup...

See *section 4.7.1*.



#### Close

Close preview window.

## 4.5 Report Generator window

### 4.5.1 Report Generator window overview

The **REPORT GENERATOR** window is used for creation and modification of custom report templates which are stored in a report template file (\*.rt). Text, table and graphic fields of the database, text labels, bitmaps and metafiles can be inserted and positioned in the template to create the desired report.

Report templates can be used for creating user defined printouts but also for a fast browsing of the analysis results. With a suitable template all important results and curves are shown in the **REPORT** window.

### 4.5.2 Opening/closing of the Report Generator window



#### **REPORT / Edit...**

The **REPORT GENERATOR** window opens for modification of an existing or creation of a new report template.




#### **REPORT GENERATOR / Template / Apply**

Close the **REPORT GENERATOR** window and apply the modified report template in the **REPORT** window. If the template has been modified, the user is asked if it should be saved or not.



#### **REPORT GENERATOR / Template / Cancel**

Close the **REPORT GENERATOR** window without applying the modifications (can also be done by pressing the  button of the **REPORT GENERATOR** window).

## 4.6 Report Generator functions

### 4.6.1 Handling of report template files


**REPORT GENERATOR / Template / New**

Create a new report template. A new empty template will be opened.


**REPORT GENERATOR / Template / Open...**

Open an existing report template. The **Open report template** window appears where the name of the template file \*.rt and its directory have to be selected.


**REPORT GENERATOR / Template / Save**

Save the current report template. If the template has not yet been stored before, the **Save report template** window appears where the name of the template file \*.rt and its directory have to be entered.

**REPORT GENERATOR / Template / Save As...**

Save the current report template under a new name. The **Save report template** window appears where the name of the template file \*.rt and its directory have to be entered.

### 4.6.2 Show data records



Fill data fields with content of first data record.



Fill data fields with content of previous data record.



Fill data fields with content of next data record.



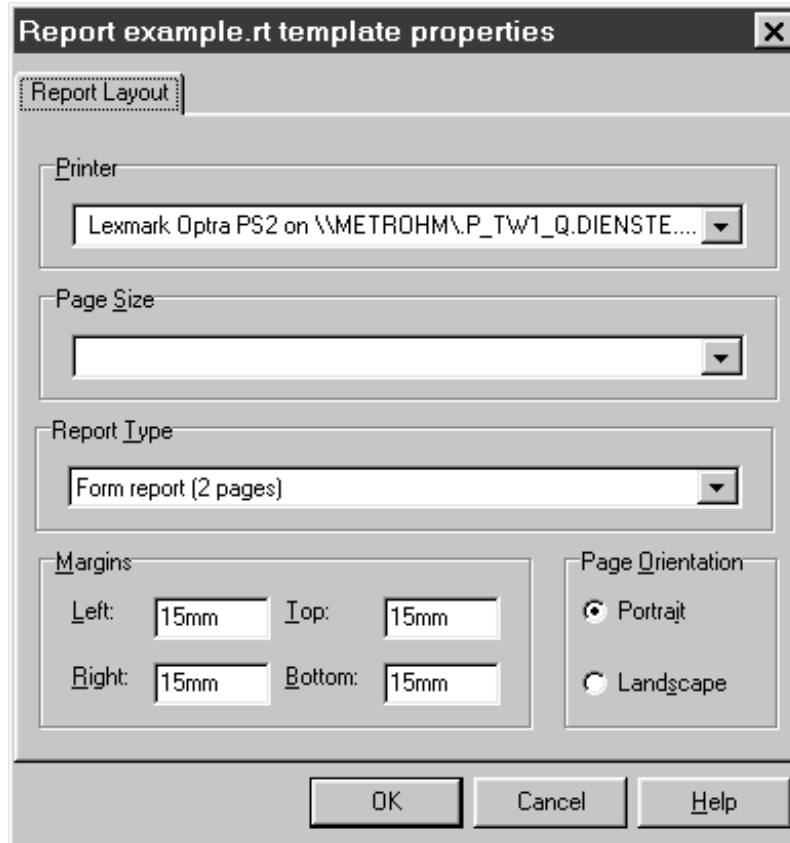
Fill data fields with content of last data record.

## 4.7 Design report templates

### 4.7.1 Report page setup

REPORT GENERATOR / Template / Page Setup

Definition of page setup parameters for the report template:



<b>Printer</b>	Selection of printer.
<b>Page Size</b>	Selection of paper size.
<b>Report Type</b>	Selection of report type:
<b>Tabular report</b>	A continuous report for all selected determinations will be created. The space available for text and graphic items of a single determination can be adjusted. In the <b>REPORT GENERATOR</b> window only the current determination is shown. In the printout, all selected determinations are lined up to one tabular report.
<b>Form report (# pages)</b>	Each determination will get one or more pages when printing the report.
<b>Margins</b>	Selection of left, right, top, and bottom margin.
<b>Page orientation</b>	Selection of <b>Portrait</b> or <b>Landscape</b> page format.

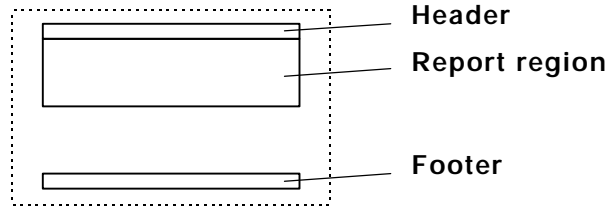
### 4.7.2 Defining template regions

#### Template area

The maximum area of the template available for insertion of labels and fields is defined by the margins and page orientation set in the Report page setup window (see *section 4.7.1*).

#### Template regions

Each template contains the three regions **Header**, **Report region** and **Footer**, which can be adjusted vertically by moving the border line to the desired height with the mouse.



### 4.7.3 Text labels



#### New text label

Add a new text label to the template by opening a rectangle at the desired location. Text labels can be added to all regions of the template.

#### REPORT GENERATOR / Item / Edit...

Change the content of the selected text label.

#### REPORT GENERATOR / Item / Delete

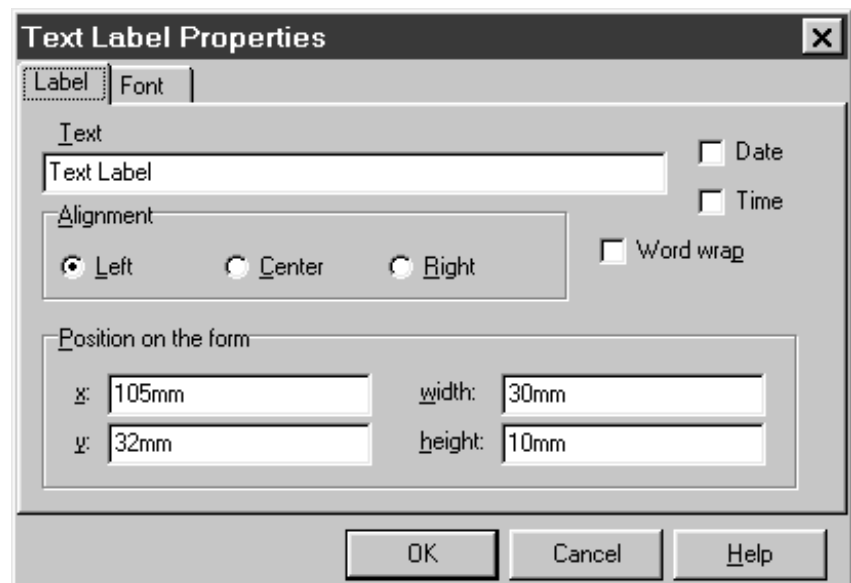
Delete the selected text label.






#### REPORT GENERATOR / Item / Properties

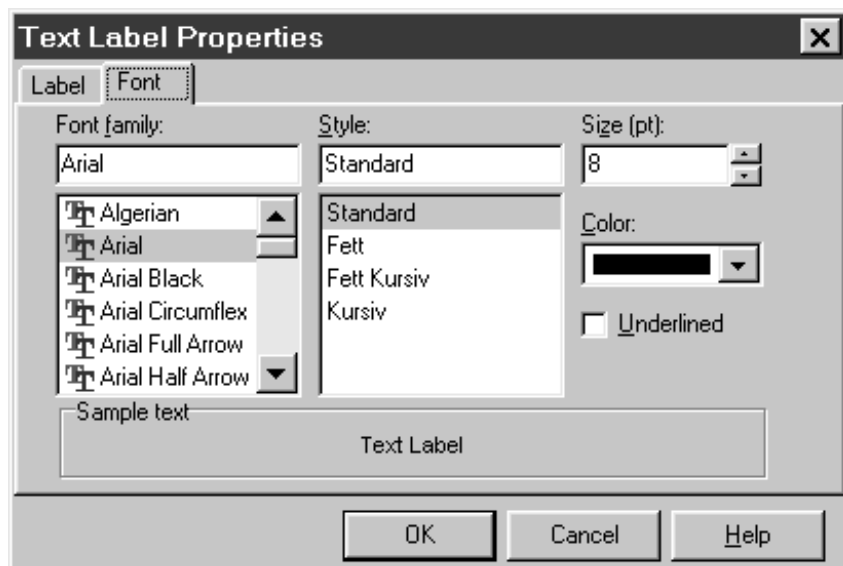
The properties of the text label can be changed in the appearing **Text label properties** window which contains two tabs:






#### Label



<b>Text</b>	Content of text label.
<b>Date</b>	Automatic entry of current date.
<b>Time</b>	Automatic entry of current time.
<b>Alignment</b>	Text alignment in the text field.
	Align text left.
	Center text.
	Align text right.
<b>Word wrap</b>	Enable this option for text labels with more than one line.
<b>Position on the form</b>	Entry of <b>x</b> and <b>y</b> position, <b>width</b> and <b>height</b> of the text label.

**Font**



<b>Font family</b>	Font selection.
<b>Style</b>	Font style.
	Set text style to bold.
	Set text style to italic.
<b>Size</b>	Font size in pt.
	Increase font size.
	Decrease font size.
<b>Color</b>	Font color.
<b>Underlined</b>	Underline text.
	Underline text.

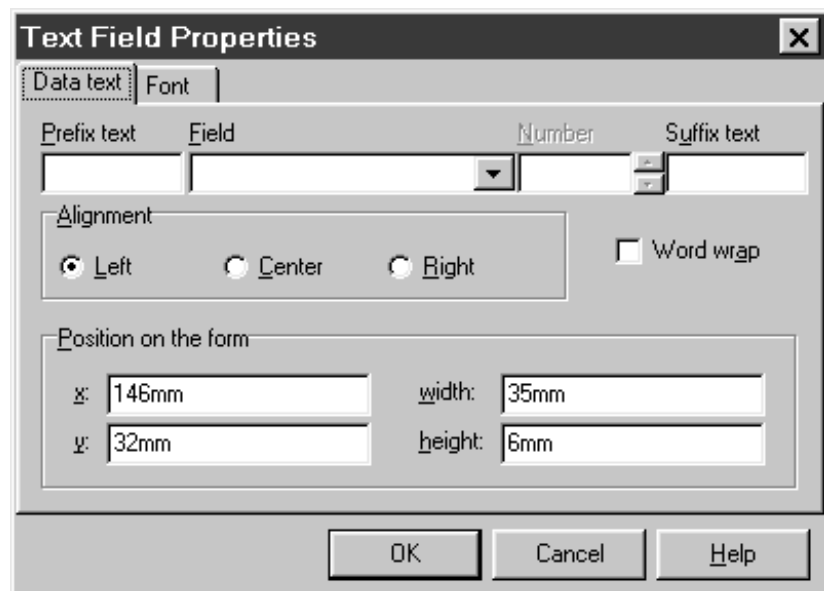
### 4.7.4 Text fields



#### New text field

Add a new text field out of the database to the template by opening a rectangle at the desired location. When the field has been placed, the **Text field properties** window opens which contains two tabs:

#### Label



<b>Prefix text</b>	Possibility to insert text before field text.
<b>Field</b>	Selection of the text field from the current database (details see on-line help of the «IC Net» or «761 Compact IC» programs).
<b>Number</b>	Selection of number for certain fields.
<b>Suffix</b>	Possibility to insert text after field text.

**Alignment** Text alignment in the text field.



Align text left.



Center text.



Align text right.

**Word wrap** Enable this option for text labels with more than one line.

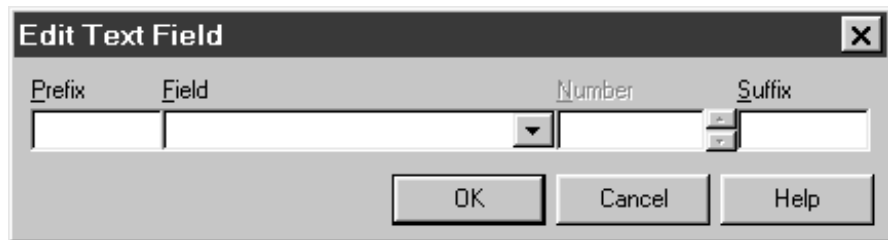
**Position on the form** Entry of **x** and **y** position, **width** and **height** of the text label.

#### Font

The font family, font style, font size and font color can be changed (see *section 4.7.3*).

**REPORT GENERATOR / Item / Edit...**

Change the content of the selected text field by selection of another field in the **Edit text field** window.



<b>Prefix text</b>	Possibility to insert text before field text.
<b>Field</b>	Selection of the text field from the current database (details see on-line help of the «IC Net» or «761 Compact IC» programs).
<b>Number</b>	Selection of number for certain fields.
<b>Suffix</b>	Possibility to insert text after field text.

**REPORT GENERATOR / Item / Delete**

Delete the selected text field.

**REPORT GENERATOR / Item / Properties**

The properties of the text field can be changed in the appearing **Text field properties** window (see above).

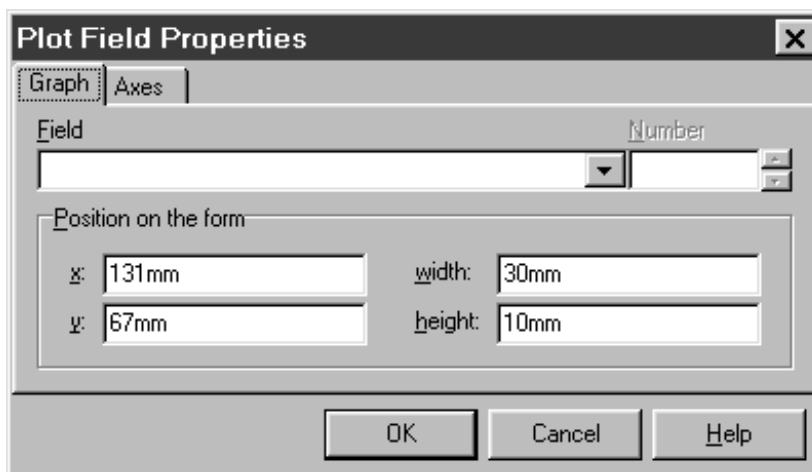
### 4.7.5 Graphic fields



#### New graphic field

Add a new graphic field (chromatogram or calibration curve) out of the database to the template by opening a rectangle at the desired location. When the field has been placed, the **Plot field properties** window opens where the content and properties of the graphic field have to be selected on the following two tabs:

#### Graph

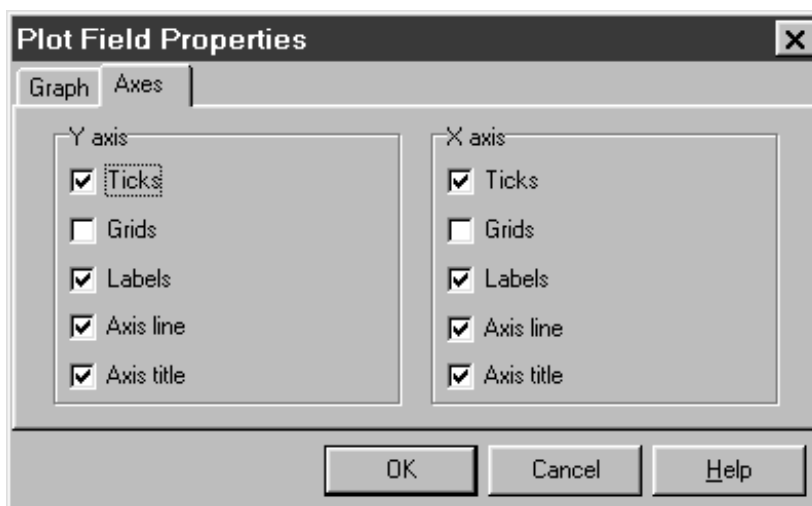


**Field** Selection of the content of the graphic field (chromatogram curve or calibration curve).

**Number** Selection of calibration curve number.

**Position on the form** Entry of **x** and **y** position, **width** and **height** of the graphic field.

#### Axes



<b>Y axis</b>	Ticks, grids, labels, axis line and axis title for the y axis can be enabled or disabled.
<b>X axis</b>	Ticks, grids, labels, axis line and axis title for the x axis can be enabled or disabled.

#### REPORT GENERATOR / Item / Delete

Delete the selected graphic field.



#### REPORT GENERATOR / Item / Properties

The properties of the graphic field can be changed in the appearing **Plot field properties** window (see above).

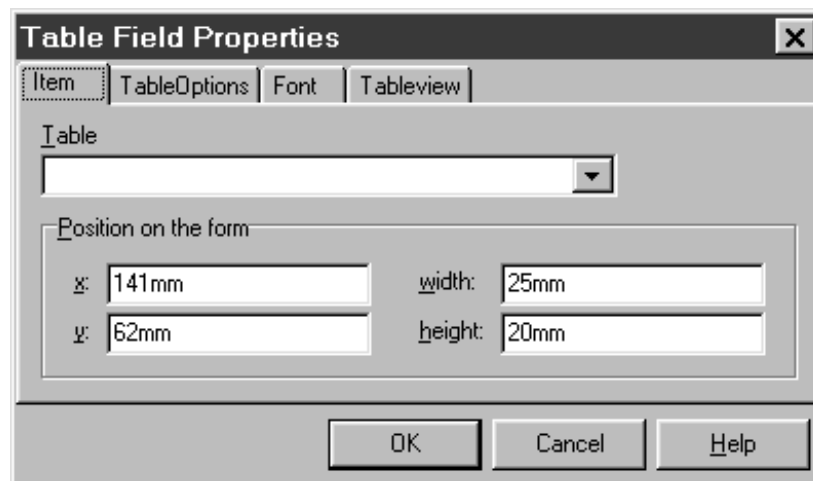
### 4.7.6 Table fields



#### New table field

Add a new table field out of the database to the template by opening a rectangle at the desired location. When the field has been placed, the **Table field properties** window opens where the content and properties of the table field have to be selected on the following four tabs:

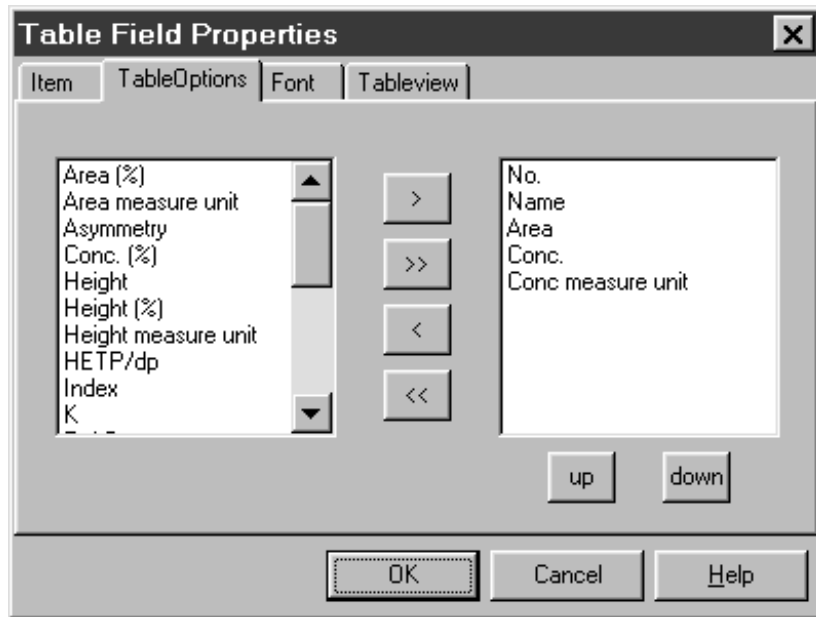
#### Item



**Table** Selection of the determination table which will be used for the table field.

**Position on the form** Entry of **x** and **y** position, **width** and **height** of the graphic field.

Table options



**First column**

Available fields of the selected table for display in the table field.

**Second column**

Visible fields of the selected table in the table field.



Move selected field from one column to the other.



Move all fields from one column to the other.

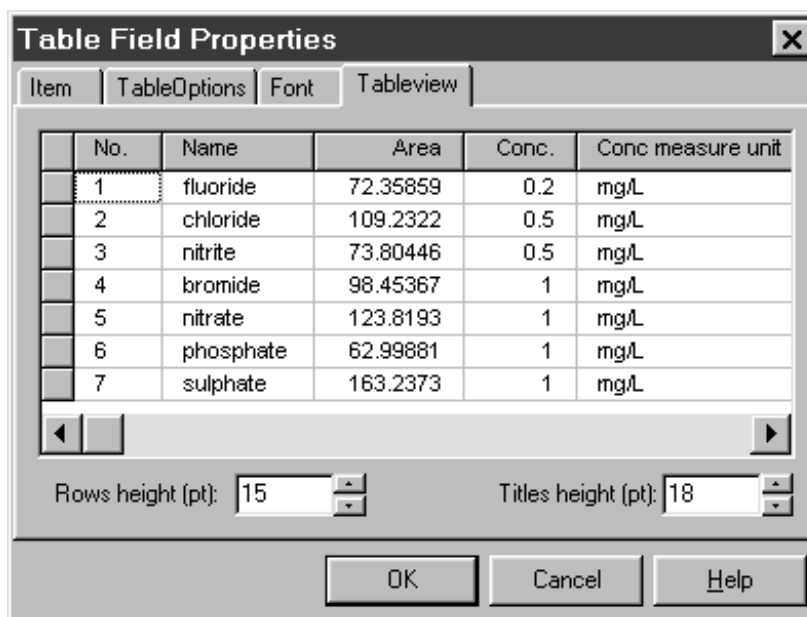


Change position of the selected field in the column of visible fields.

**Font**


The font family, font style, font size and font color for the table field can be changed (see *section 4.7.3*).

## Table view



**Rows height** Height of the table rows in pt.

**Titles height** Height of the title row in pt.

**Field columns** The column width can be adjusted by moving the cursor in the title line of the table between two columns until the cursor appears as . With the left-hand mouse key the column can then be drawn to the required size. By clicking the columns with the right-hand mouse key, the columns can be modified using the following items of the context-sensitive menu:

**Change title** Possibility to enter a new title for the column.

**Center** Center text in the column.

**Left** Align text left in the column.

**Right** Align text right in the column.

**Titles font** Selection of font family, font style, font size and font color for the column title.

**Formats** Possibility to define the number of digits for numeric columns.

**REPORT GENERATOR / Item / Delete**  
Delete the selected table field.



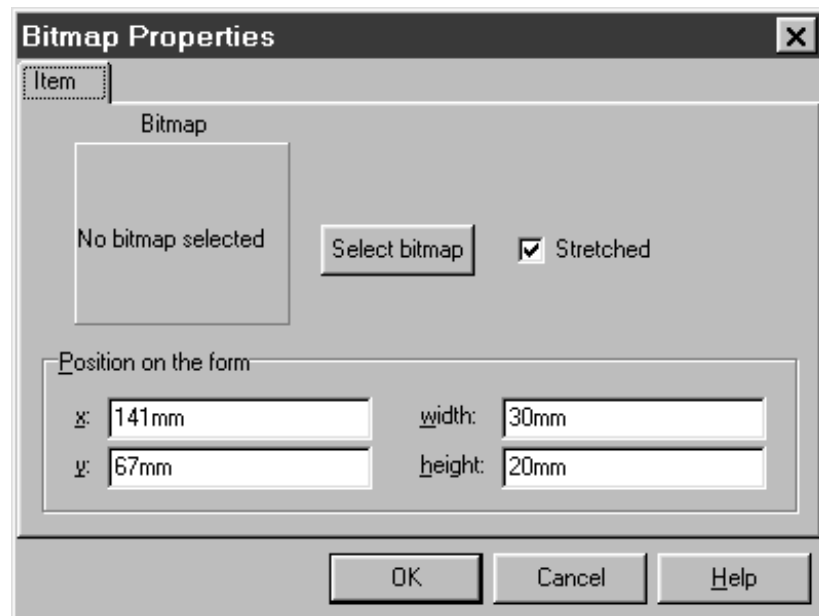
**REPORT GENERATOR / Item / Properties**  
The properties of the table field can be changed in the appearing **Table field properties** window (see above).

4.7.7 Bitmap fields



**New bitmap field**

Add a new bitmap field (BMP file) to the template by opening a rectangle at the desired location. When the field has been placed, the **Bitmap properties** window opens.



<b>Bitmap</b>	Display of selected bitmap.
<b>&lt;Select bitmap&gt;</b>	Selection of the bitmap file (*.bmp) to be displayed.
<b>Stretched</b>	If this option is enabled, the bitmap is stretched if the field is resized.
<hr/>	
<b>Position on the form</b>	Entry of <b>x</b> and <b>y</b> position, <b>width</b> and <b>height</b> of the bitmap field.

**REPORT GENERATOR / Item / Delete**  
Delete the selected bitmap field.



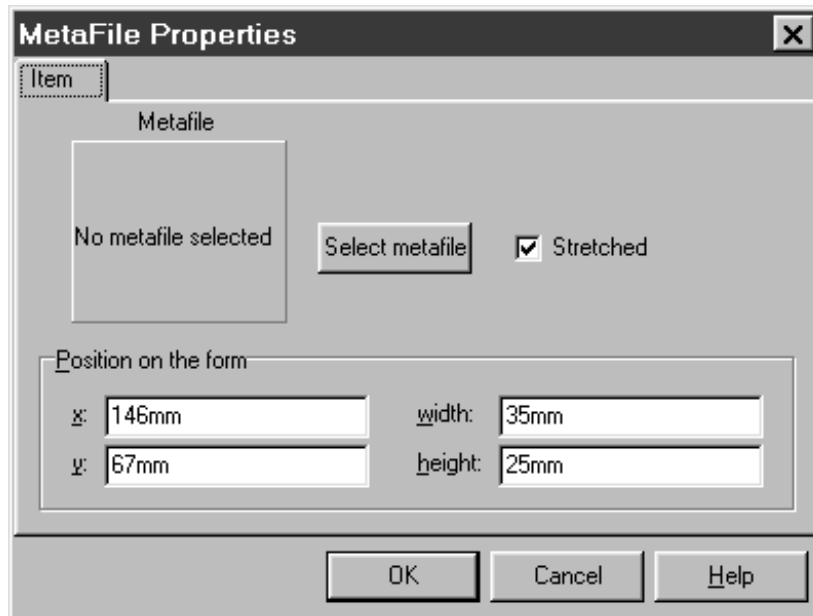
**REPORT GENERATOR / Item / Properties**  
The properties of the bitmap field can be changed in the appearing **Bitmap properties** window (see above).

### 4.7.8 Metafile fields



#### New metafile field

Add a new metafile field (EMF file) to the template by opening a rectangle at the desired location. When the field has been placed, the **Metafile properties** window opens.



<b>Metafile</b>	Display of selected metafile.
<b>&lt;Select metafile&gt;</b>	Selection of the metafile (*.emf) to be displayed.
<b>Stretched</b>	If this option is enabled, the metafile is stretched if the field is resized.
<b>Position on the form</b>	Entry of <b>x</b> and <b>y</b> position, <b>width</b> and <b>height</b> of the metafile field.

#### REPORT GENERATOR / Item / Delete

Delete the selected metafile field.



#### REPORT GENERATOR / Item / Properties

The properties of the metafile field can be changed in the appearing **Metafile properties** window (see above).

# 5 Appendix

## 5.1 Software license

As the purchaser of the «Autodatabase 1.0» PC software you also receive the license to use this software on your PC. The PC software has been validated by Metrohm in accordance with the requirements of the ISO 9001 quality system concerning its functioning, analytical performance and accuracy of results. The software functions are documented in the Software Manual provided.

Please send us your Registration card as soon as possible so that we can register you as an official purchaser. As a registered purchaser you will receive any updated program versions for a preferential price.

## 5.2 Ordering designations

<b>6.6034.003</b>	<b>«IC Net 2.0» Software</b> incl. «IC Net 2.0» and «Autodatabase 1.0» software
<b>8.110.8193</b>	<b>«IC Net 2.0» Software Manual</b>
<b>8.110.8213</b>	<b>«Autodatabase 1.0» Software Manual</b>

## 5.3 Index

<b>A</b>	Chromatogram	backup ..... 7
<Add Expression> ..... 10	display curve ..... 14	close ..... 6
<Add Subexpression> ..... 10	open table view ..... 11	create new ..... 6
Alignment ..... 26,27	<Clear> ..... 10	handling ..... 6
And Then Sort By ..... 10	Clipboard ..... 16,20	organization ..... 6
Axes ..... 29	<b>Color</b> ..... 26	save ..... 6
	Comment ..... 1	save as ..... 6
<b>B</b>	Comment window ..... 12	<b>Date</b> ..... 26
Backup databases ..... 7	Context-sensitive menus ..... 4	<Delete Expression> ..... 10
<b>Bitmap</b> ..... 33	Copy to clipboard ..... 16,20	Determination
Bitmap fields ..... 33	Curves	import ..... 7
	print ..... 17	send to IC program ..... 7
<b>C</b>	print preview ..... 17	Display
Calibration curve	report ..... 29	calibration curves ..... 15
display ..... 15	<b>D</b>	chromatogram curves ..... 14
report ..... 29	Data log window ..... 12	overlay curves ..... 15
Caution ..... 1	Data selection ..... 20	<Do Not Sort> ..... 10
<b>Center</b> ..... 32	Database ..... 6	
<b>Change title</b> ..... 32		

<b>E</b>			
<Edit Expression>	10		
Explorer			
items	13		
open	11,13		
overview	13		
Export			
curves	16		
reports	20		
<b>F</b>			
Field	27,28,29		
File types			
export	4		
overview	3		
Files			
ADB files	2,3,6,7		
BMP files	4,16		
DB files	3,6,7		
EMF files	4,16,20		
FLT files	2,4,8,9		
ID files	3,6,7		
MB files	3,6,7		
PX files	3,6,7		
RT files	2,4		
TXT files	4,20		
Filtering			
create new filter	8		
criteria	9		
delete filter	8		
Filter designer	9		
handling of filter files	8		
load filter	8		
Font	26,27,31		
Font family	26		
Form report	24		
Formats	32		
<b>G</b>			
General Preferences	11		
GLP log window	12		
Graph	29		
Graphic field	29		
<b>H</b>			
Hardware requirements	2		
Help	4		
<b>I</b>			
Import determinations	7		
Integration events	11		
Introduction	1		
Item	30		
<b>L</b>			
Label	25,27		
Left	32		
License	35		
<Load>	10		
<b>M</b>			
Main Window			
closing	5		
		overview	5
<b>Margins</b>	18,24		
<b>Metafile</b>	34		
Metafile fields	34		
<b>N</b>			
Notation	1		
<b>Number</b>	27,28,29		
<b>O</b>			
On-line help	4		
Opening of windows	11		
Operator	9		
Ordering designations	35		
Overlay curves	15		
<b>P</b>			
Page form	18		
Page orientation	18,24		
Page setup			
curves	18		
report	24		
Page Size	24		
Peak window	12		
Pictograms	1		
Position on the form	26,27,29,30,33,34		
Prefix text	27,28		
Print			
curves	17		
reports	21		
Print preview			
curves	17		
report	21		
Printer	18,24		
Program windows			
Explorer	13		
Main window	5		
overview	3		
Purpose of program	1		
<b>R</b>			
Registration card	2,35		
Report			
open	11,19		
page setup	24		
print	21		
print preview	21		
Report Generator			
functions	23		
open	22		
overview	22		
settings	11		
Report template			
area	25		
bitmap fields	33		
create	23		
define template regions	25		
description	22		
design	24		
edit	20,22		
file handling	23		
graphic fields	29		
load	19		
metafile fields	34		
open	23		
regions	25		
save	23		
table fields	30		
text fields	27		
text labels	25		
<b>Report Type</b>	24		
Report window			
functions	19		
open	19		
overview	19		
<b>Right</b>	32		
<b>Rows height</b>	32		
<b>S</b>			
<Save>	10		
<Select bitmap>	33		
<Select metafile>	34		
Select Records Where	9		
Send determinations			
to IC program	7		
Show data records	23		
Size	26		
Software			
deinstallation	2		
installation	2		
license	35		
Sort Selected Records By	10		
Sorting criteria	10		
Starting the program	5		
Stretched	33,34		
Style	26		
Suffix	27,28		
<b>T</b>			
Table	30		
Table field	30		
Table options	31		
Table view	32		
Tabular report	24		
Text	26		
Text field	27		
Text label	25		
Time	26		
Titles font	32		
Titles height	32		
<b>U</b>			
Underlined	26		
<b>W</b>			
Warning	1		
Word wrap	26,27		
<b>X</b>			
X axis	30		
<b>Y</b>			
Y axis	29		