

Site Preparation Checklist



Manual

81058026EN / 2022-01-20





CH-9100 Herisau
Switzerland
+41 71 353 85 85
info@metrohm.com
www.metrohm.com

Site Preparation Checklist

2.0

Manual

Technical Communication
Metrohm AG
CH-9100 Herisau

This documentation is protected by copyright. All rights reserved.

This documentation has been prepared with great care. However, errors can never be entirely ruled out. Please send comments regarding possible errors to the address above.

Disclaimer

Deficiencies arising from circumstances that are not the responsibility of Metrohm, such as improper storage or improper use, etc., are expressly excluded from the warranty. Unauthorized modifications to the product (e.g. conversions or attachments) exclude any liability on the part of the manufacturer for resulting damage and its consequences. Instructions and notes in the Metrohm product documentation must be strictly followed. Otherwise, Metrohm's liability is excluded.



Table of Contents

1	Introduction	1
2	Vision Air Software	2
3	Site Preparation Checklist for Vision Air Server	3
4	Technical Information for Vision Air Server	4
5	Minimum System Requirements	5
	5.1 Vision Air Server Requirements	5
	5.2 Vision Air Manager Network Client Requirements	6
6	Windows Update	7
7	User Permissions	8
	7.1 Permission Requirements by Product	8
8	Communication Protocols	9
9	Server and Client Firewall Ports	10





1 Introduction

This is a short guide to assist in the preparation of a site for the installation of a Vision Air Server. It is important for each requirement to be met before beginning the installation to avoid any delays in the process.

Please pay special attention to the areas related to security access rights and firewall ports. Depending on the customer's IT Department these items can take days to resolve, for internal departments, or weeks for outsourced departments.



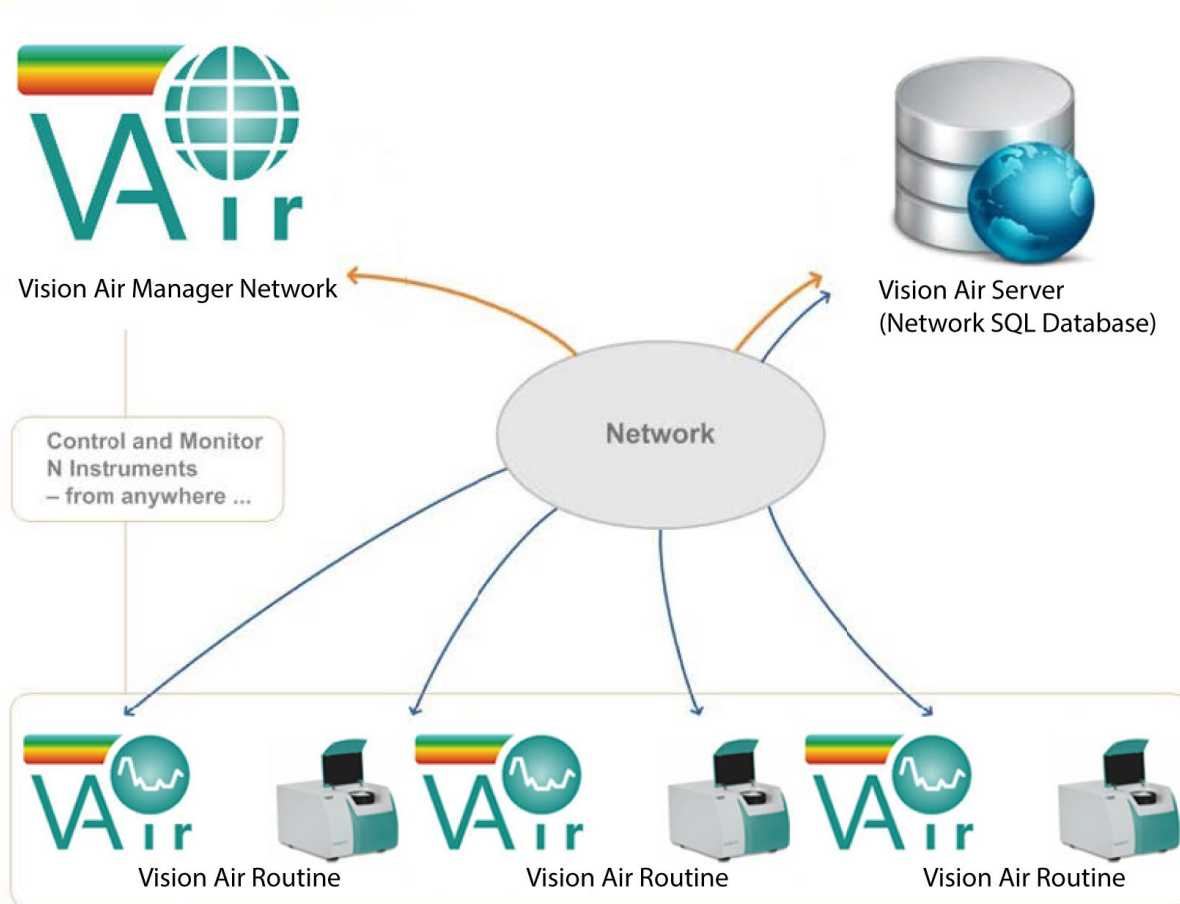
2 Vision Air Software

Vision Air 2.0 is the latest in intelligent remote support. It eliminates complexity at instrument level and allows a central specialist to monitor and manage remote instruments either within your network or across networks or the Internet. Automated surveillance alerts and new reporting options ensure that each part of the analysis process is monitored, managed and optimized. Instrument adjustments and updates are easily made and distributed, which also adds security and integrity of your complete analytical system.

Vision Air 2.0 supports instruments and analysis technologies. Products currently supported include:

- Metrohm XDS lab product family
- Metrohm DS2500 product family

Possible Vision Air Client Server setup:



3 Site Preparation Checklist for Vision Air Server

Location: _____ Installation Date: _____

Company Name: _____

Customer Representative: _____

Phone: _____ Email: _____

Metrohm Instrument(s): _____

Verification step	YES
Does the Operating Systems & Server meet the minimum system requirements (See Minimum System Requirements)?	<input type="checkbox"/>
Have all Windows Updates been applied?	<input type="checkbox"/>
Is Internet Explorer version 8 or higher?	<input type="checkbox"/>
Does the computer have internet browser access for downloading prerequisites?	<input type="checkbox"/>
Is the site is using a Proxy Server (use HTTP client if using a Proxy Server)?	<input type="checkbox"/>
Contact Details for Local IT (to be available during installation)	<input type="checkbox"/>

Name: _____

Phone Number: _____

Email: _____



4 Technical Information for Vision Air Server

Vision Air DNS or IP Address:

Firewall Ports (See Server & Client Firewall Ports)

TCP (required):

HTTPS (Proxy Only):

ClickOnce (required):

SQL Server

Will SQL be installed on the same server as Vision Air?

YES NO

SQL Version:

2014 2016 2017

SQL Server Name:

Vision Air Instance Name:

Is the User Account for installation a full administrator and has SQL Sysadmin rights?

YES NO

Email Configuration (optional)

Server Address/Name:

Port:

User Name:

Password:



5 Minimum System Requirements

5.1 Vision Air Server Requirements

Operating Systems	Windows Server 2012 R2 with Service Packs Windows Server 2016 Windows Server 2019 Operating System Language must be English (during installation only)
CPU	Dual 2 GHz Processors
Memory (RAM)	8 GB
HDD	80 GB free space (dependent on data storage needs) NTFS File System
Video	SVGA at 1024x768, 16-bit color
NIC	1 Gbit Ethernet
Database Server	Microsoft SQL Server 2014 / 2016 / 2017 Vision Air Server installations connected to Microsoft SQL Server 2012 should be migrated to Microsoft SQL Server 2014 prior to upgrading to Vision Air Server 2.0.7.
Connectivity	2-5 open ports on firewall* (Incoming) (The number of ports is dependent on instrument type & proxy server configuration) External IP address or DNS address (recommended) for external clients to be able to communicate with the Vision Air Server SMTP account for emailing Reports & Vision Air Manager download links (optional)
Additional Software & Requirements	
	Internet Information Services (IIS) Server role .NET 4.8 Framework Extended Crystal Reports 13.01 runtime (included with install) MATLAB Compiler Runtime 8.0 (installed separately)



5.2 Vision Air Manager Network Client Requirements

Operating Systems	Windows 7 Enterprise SP1 (32 & 64 bit) Windows 10 (32 & 64 bit) Windows Server 2012 / 2016 / 2019 Operating System Language must be English (during installation only)
CPU	2 GHz
Memory (RAM)	2 GB
HDD	10 GB free space
Video	SVGA 1024x768, min. 16-bit color (1280x1024 recommended)
NIC	1x 100 Mbit Ethernet
Firewall Ports	2 Firewall ports for outgoing communication
Additional Required Software	
	.NET 4.8 Framework Extended (included) Crystal Reports 13.01 runtime (included) Internet Explorer 8 or higher



6 Windows Update

All the latest Windows Service Packs and Windows patches must be installed via Windows Update or WSUS prior to any software installation.

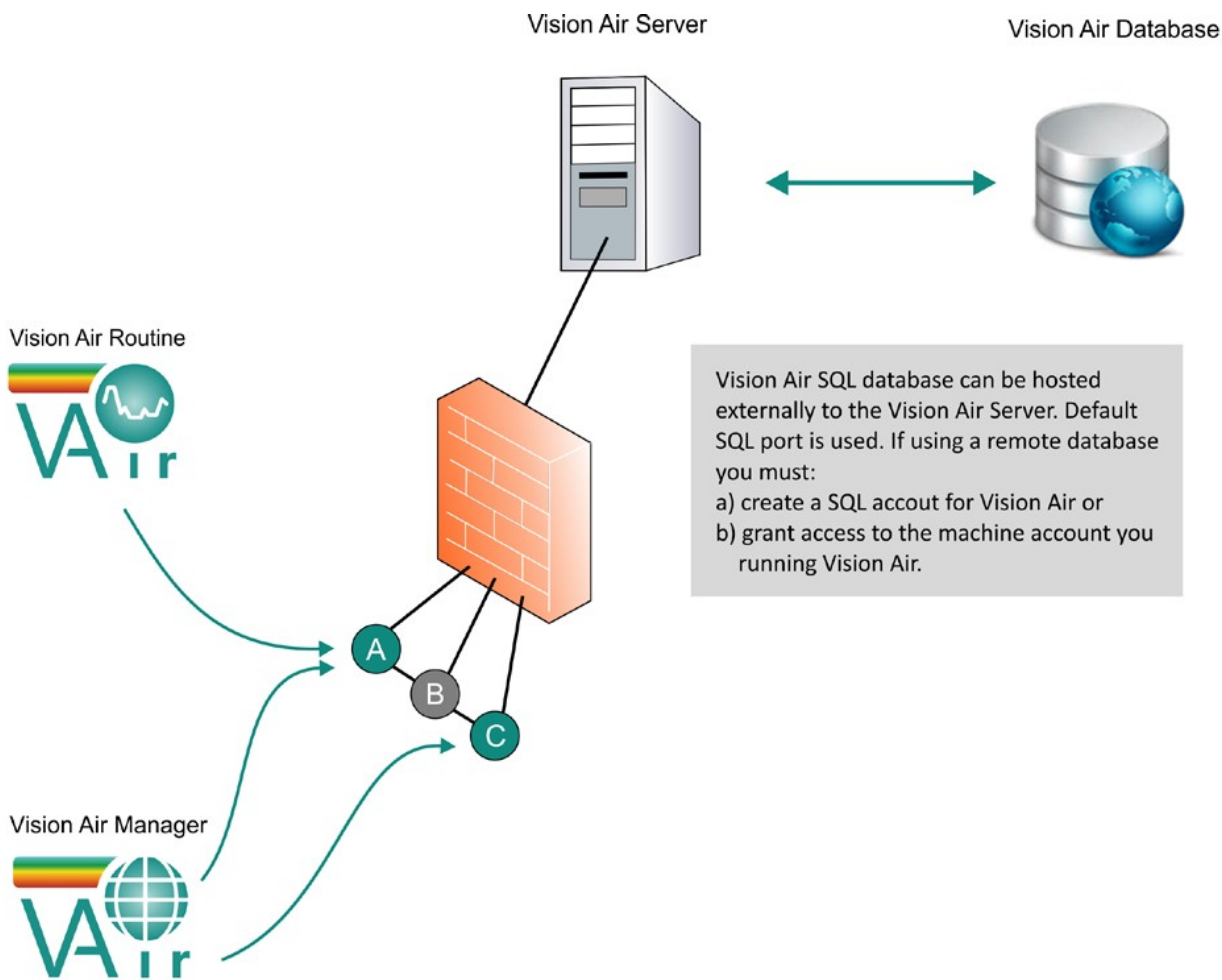


8 Communication Protocols

Communication between the Vision Air Server and Vision Air clients is based on WCF and TCP or HTTP and is encrypted with an SSL certificate. The HTTP version is intended for use only by customers with Proxy servers, which limit TCP communications.



9 Server and Client Firewall Ports



Vision Air SQL database can be hosted externally to the Vision Air Server. Default SQL port is used. If using a remote database you must:
 a) create a SQL account for Vision Air or
 b) grant access to the machine account you running Vision Air.

Port A: Required standard port for TCP communication with Vision Air Server (Vision Air clients).
Port B: Alternative port for HTTP communication with Vision Air Server (Vision Air clients).
Port C: Required HTTP port for ClickOnce installation and update of Vision Air Manager clients.

Mail account:
 Vision Air has features for generating and sending emails to users. Such mails are sent from the Vision Air Server which in that case needs to be configured with a SMTP Relay agent (not mandatory).

Client and instrument ports:
 Communication is always initiated from the Vision Air client and the instruments. The same ports opened on the Vision Air Server/firewall must be open for outgoing traffic only on the clients and instruments.

Port numbers:
 Metrohm recommends using ports in the 8000 range to reduce potential interference by other applications. The port range can be changed to meet the customer's needs.

