

1 Minimum system requirements

Please refer to the Empower™ software documentation for information regarding the technical requirements for your computer (PC).

Application software

- Empower™ 3 software
- Microsoft Internet Explorer 8.0

Devices supported

The Metrohm IC Driver 2.0 for Empower™ supports the following devices and instruments:

- **850 Professional IC**
(version: 2.850.1010, 2.850.2010, 2.850.2030)
- **881 Compact IC pro**
(version: 2.881.0010, 2.881.0020, 2.881.0030)
- **930 Compact IC Flex**
(version: 2.930.1100, 2.930.1160, 2.930.1200, 2.930.1260, 2.930.1300, 2.930.1360, 2.930.1400, 2.930.1460, 2.930.1500, 2.930.1560, 2.930.2100, 2.930.2160, 2.930.2200, 2.930.2260, 2.930.2300, 2.930.2360, 2.930.2400, 2.930.2460, 2.930.2500, 2.930.2560)
- **940 Professional IC Vario**
(version: 2.940.1100, 2.940.1110, 2.940.1200, 2.940.1300, 2.940.1400, 2.940.1410, 2.940.1440, 2.940.1500, 2.940.1540, 2.940.2400, 2.940.2500)
- **942 Extension Module Vario**
(version: 2.942.0040, 2.942.1060)
- **858 Professional Sample Processor**
(version: 2.858.0010, 2.858.0020)
- **889 IC Sample Center**
(version: 2.889.0010, 2.889.0020)
- **945 Professional Detector Vario – Amperometry**
(version: 2.945.0020)
- **800 Dosino**
(version: 2.800.0010)
- **Remote Box MSB**
(version: 6.214.8010)

Limitations

One IC system may maximally include the following modules:

- One sample changer (889 sample center or 858 sample processor)
- One professional detector vario – amperometry (2.945.0020)
- Two IC conductivity detectors (2.850.9010)
- The number of MSB devices (e.g. Dosinos) depends on the number of available ports (according to the system configuration).
- One IC system can only include one IC instrument (e.g. two 930 Compact IC Flex instruments cannot be controlled in one IC System).

Firmware requirements

- 850/881 instruments: version 5.850.0109 or higher
- 858 instruments: version 5.858.0010 or higher
- 930/940 instruments: version 5.940.0100 or higher
- 889 instruments: version 0840.100-1.30 or higher



NOTE

The Windows user must have administrator rights in order to be able to install the software.



CAUTION

Data loss may occur if the PC switches to sleep mode during a determination. The **sleep mode** should therefore be **disabled** in the energy settings of the operating system.

2 Installation



NOTE

The installation procedure differs whether you install the Metrohm IC Driver for the first time or you perform an upgrade from version 1.1. If you perform an upgrade, you first have to uninstall version 1.1 and afterwards install version 2.0. Do not install version 2.0 on top of version 1.1!

- Base installation: *See chapter 2.2 on page 5*
- Upgrade: *See chapter 2.1 on page 3*



NOTE

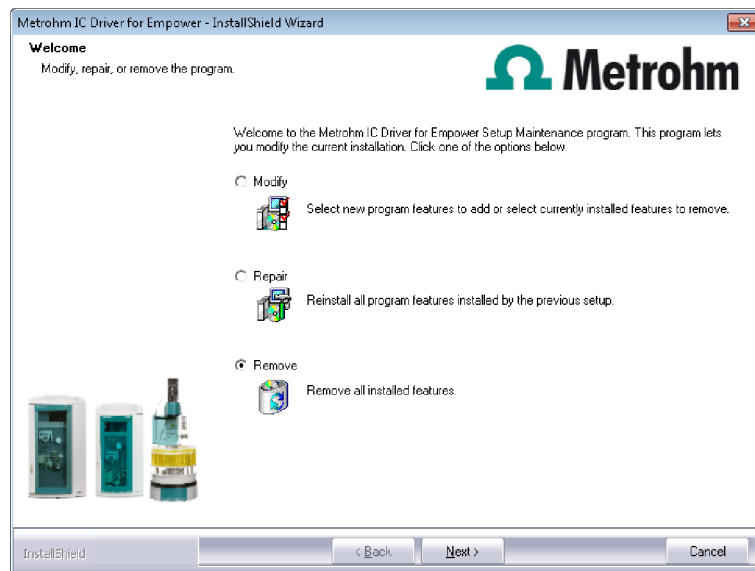
Regulated operation (FDA)

In regulated operation, the current installation needs to be checked with the "Database Installation Verification Utility" in the start menu folder of Empower before installing the Metrohm IC Driver 2.0 for Empower™. Hereby a report is created that shows all the changes in the software Empower.

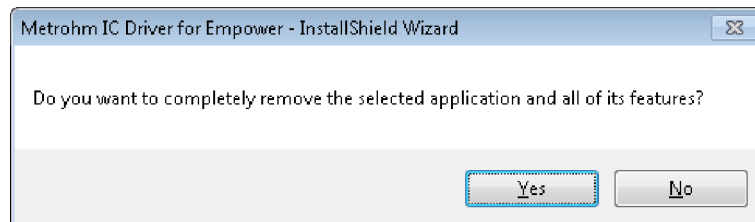
Start ▶ All Programs ▶ Empower ▶ verify files

2.1 Upgrade Installation

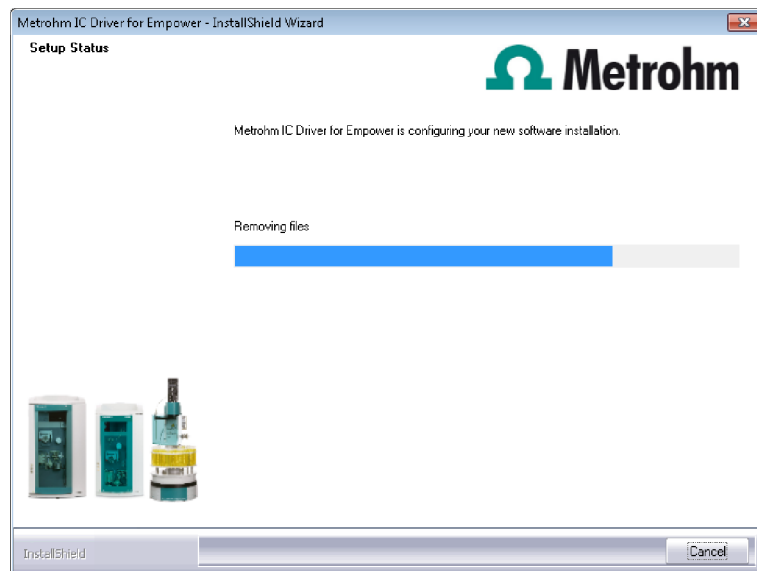
- 1 Before installing the Metrohm IC Driver 2.0 you first have to uninstall version 1.1. For this purpose double-click on the file **setup.exe**.
- 2 Select **[Remove]** and click on **[Next]**.



- 3 Confirm the message with **[Yes]**.



- 4 Wait for the uninstallation to complete.



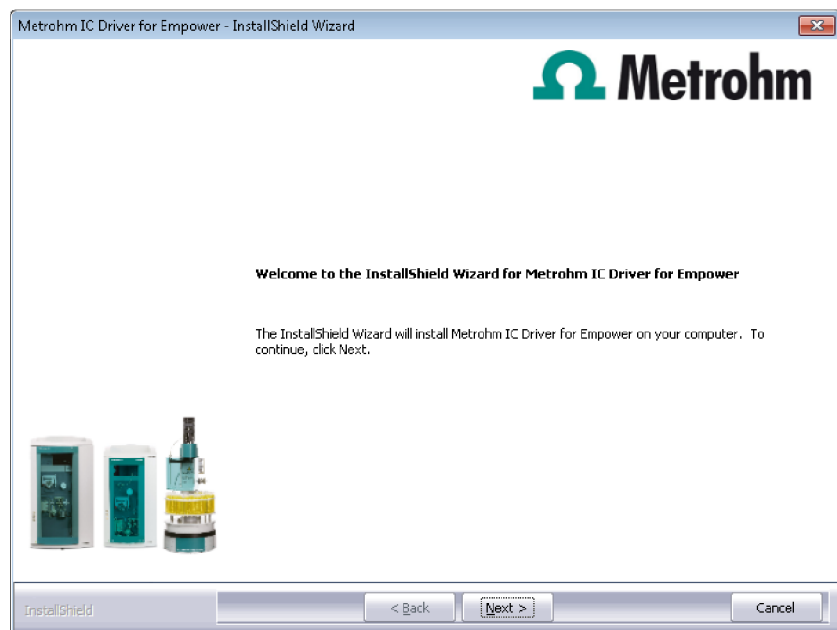
5 Click on **[Finish]**.



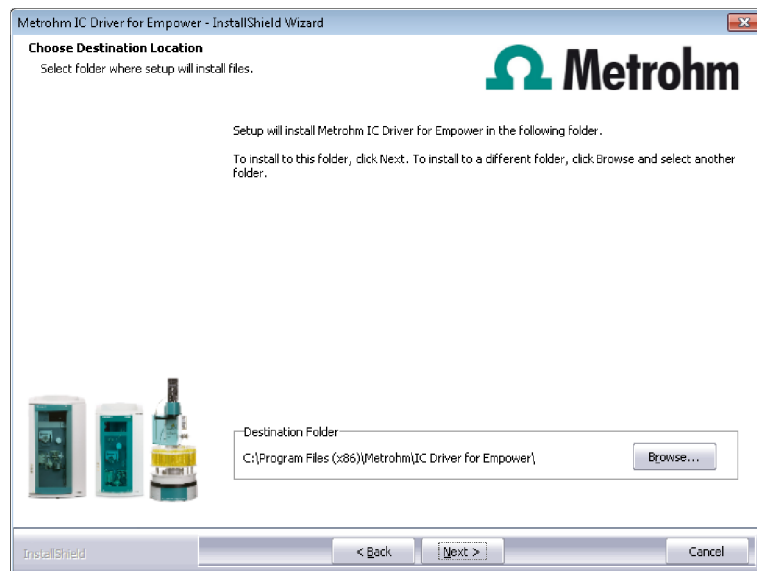
6 Go to *chapter 2.2 on page 5* and install the Metrohm IC Driver 2.0 as described.

2.2 Base Installation

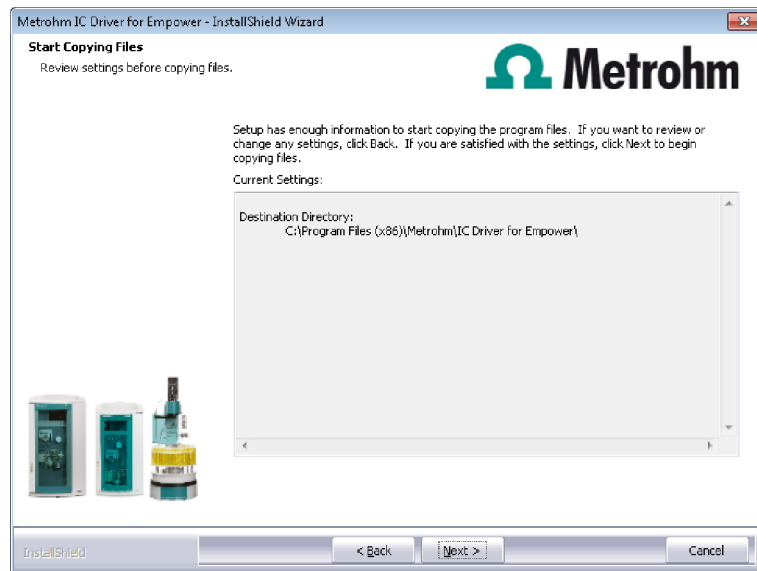
- 1 Prior to the installation, ensure that all modules are switched off.
- 2 The installation process starts automatically when you insert the CD into the drive. If this option is disabled on your computer, double-click on the file **setup.exe**.
Afterwards, click on **[Next]**.
- 3 During the installation process, the Welcome screen appears first. Click on **[Next]** to install the software.



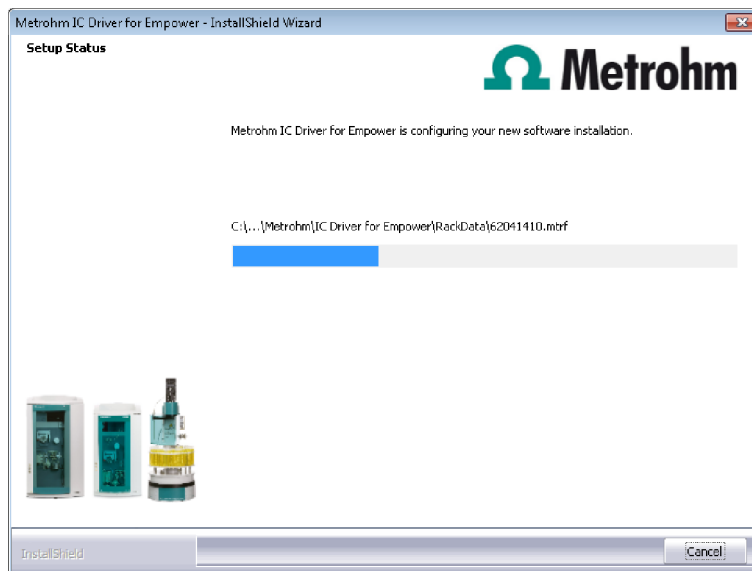
- 4 Now confirm the target folder for the **Metrohm IC Driver 2.0 for Empower** installation with **[Next]** or select a different target folder with **[Browse...]**.



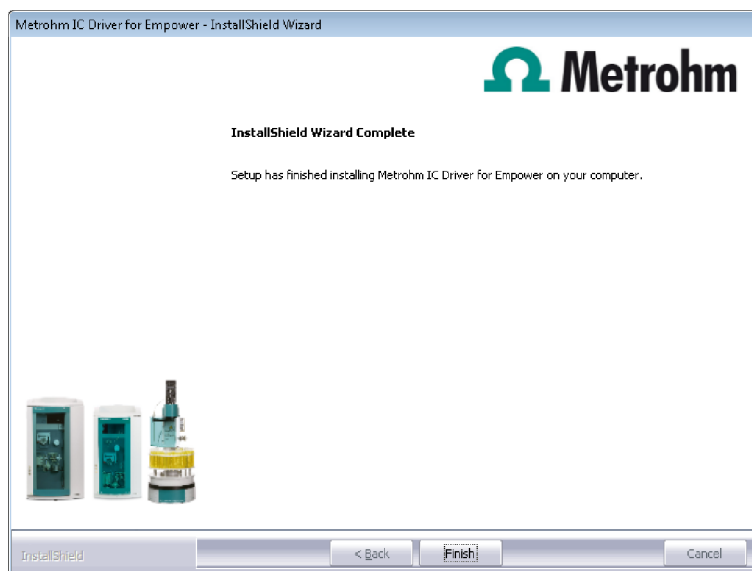
5 Click on **[Next]**.



6 Wait for the installation to complete.



7 Click on **[Finish]**.



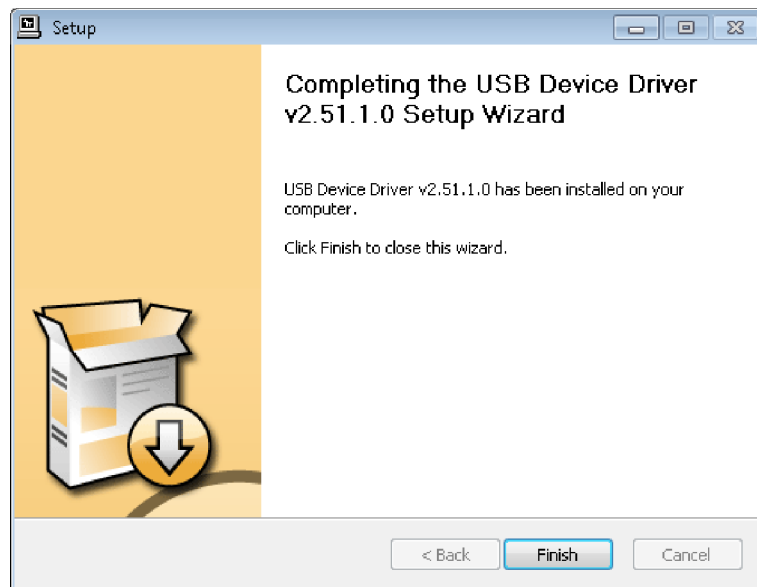
At the end of the installation, the file **Empower.log** will be created. This file contains all relevant information concerning your current **Empower** installation. Save this file on your hard drive for future reference and print it (add to IQ).



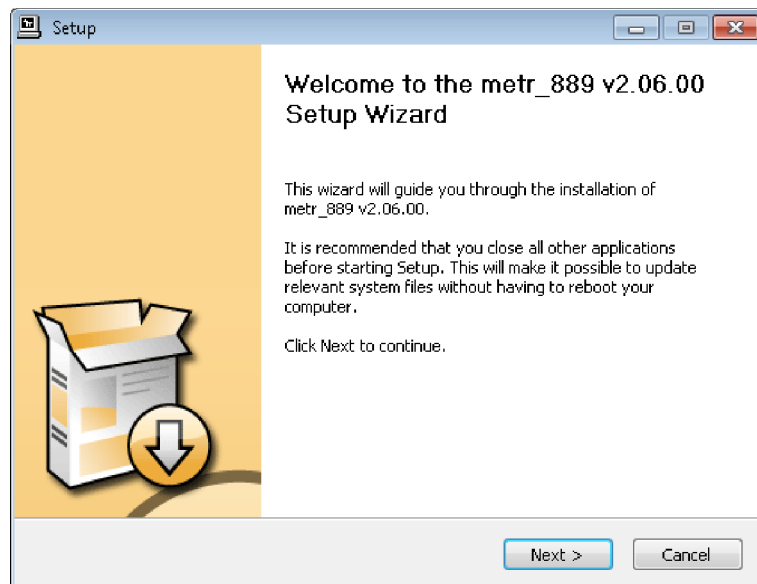
NOTE

The **InstallLog** file can be found in the **Windows** folder under the name **Empower.log**. It contains a listing of all files copied to your computer during the installation and a confirmation that the installation has been successfully completed.

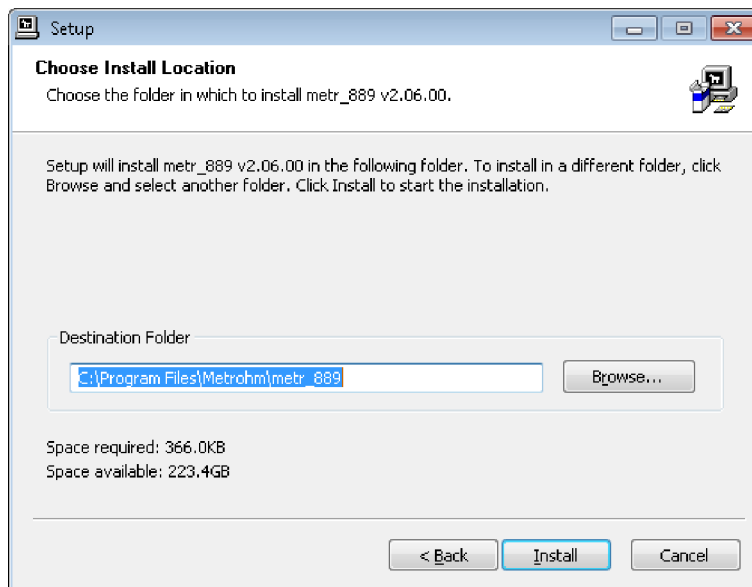
8 Click on **[Finish]** to complete the installation.



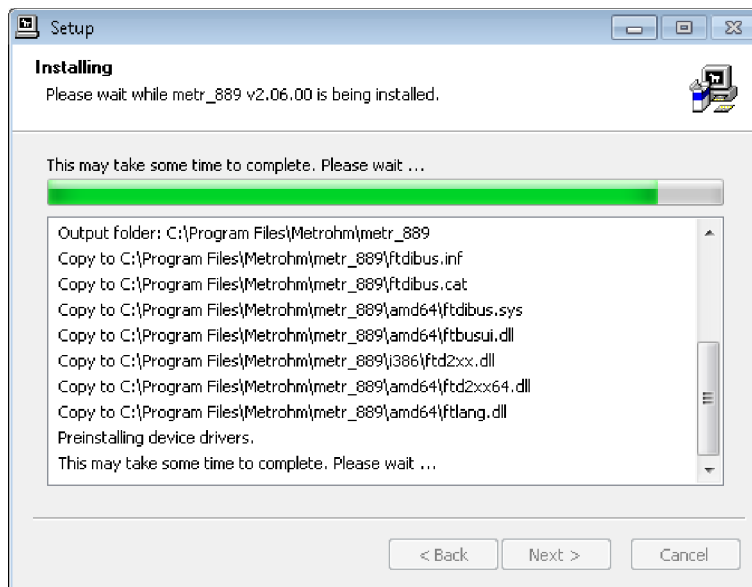
- 9 Next you have to install the 889 IC Sample Center driver. For this purpose click on **[Next]**.



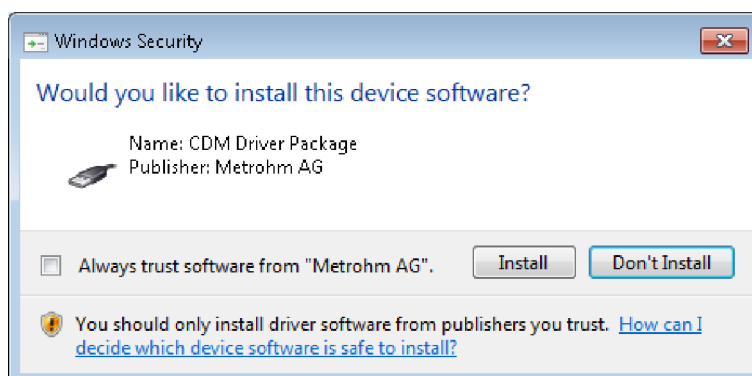
- 10 Confirm the target folder with **[Install]** or select a different target folder with **[Browse...]**.



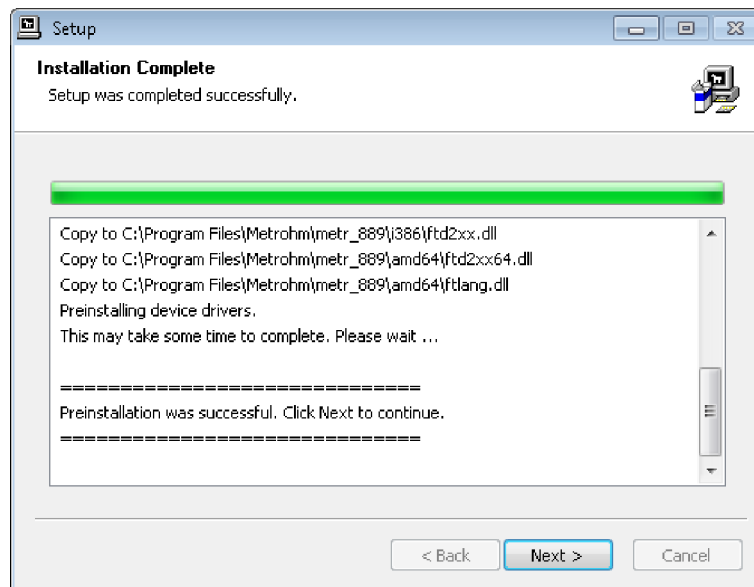
- 11 Wait for the installation to complete. Afterwards click on **[Next]**.



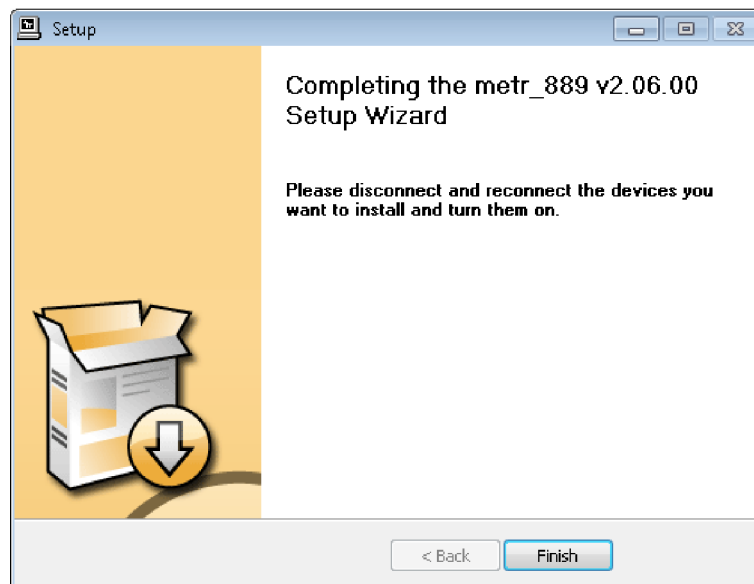
- 12 Click on **[Install]** to install the CDM driver package.



- 13 Wait for the installation to complete. Afterwards click on **[Next]**.



- 14** Disconnect and reconnect the devices you want to install. Afterwards click on **[Finish]** to end the installation.



- 15** If you are asked to restart your PC, shut down your PC and restart it again.

- 16** In regulated operation, start the program "Database Installation Verification Utility" in the start menu.

Start ► All Programs ► Empower ► verify files

The result list shows all changes to the current Empower installation. Usually the Metrohm IC driver software does not cause any changes in Empower.

When using a special sample rack, the adjusted rack data is saved in the file „RackCodeMapping.html“. When performing the „verify files“ function, this file is shown as changed.

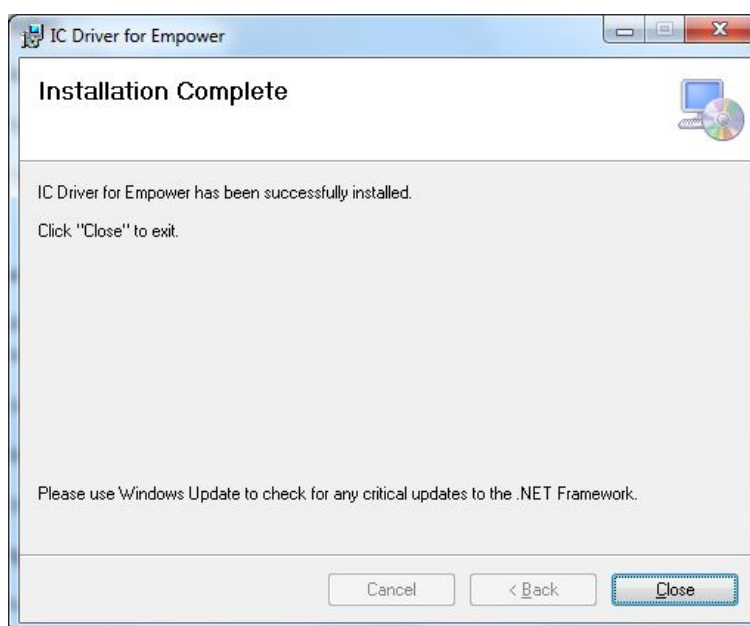
Print out the list with the record of changes and add to the IQ documents.

2.3 Installation in a Citrix environment

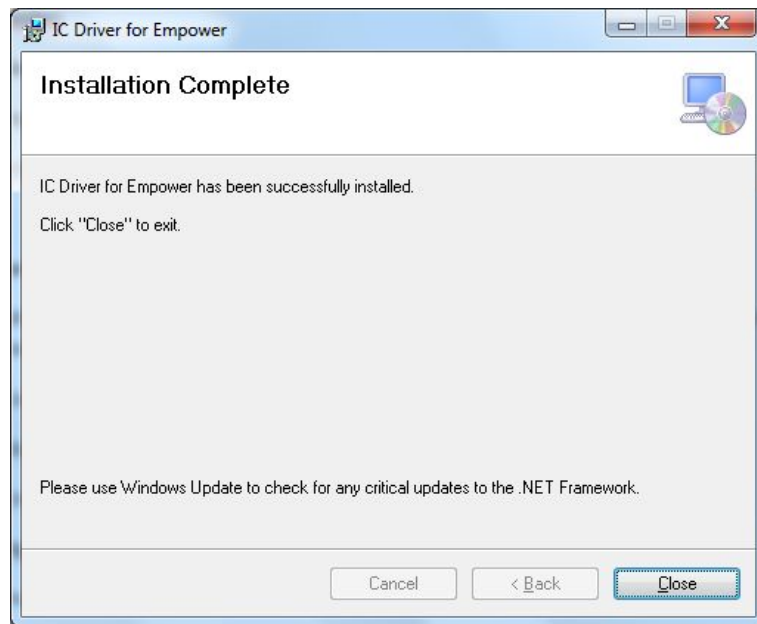
To install the **Metrohm IC Driver 2.0 for Empower™** in a Citrix environment, the following preconditions must be met:

- Empower™ must be installed according to the Waters instructions.
- Empower™ must be configured in a Citrix Xen App Server 6.5 environment. For minimum system requirements, refer to the Waters instructions.

- 1 Install the Metrohm IC Driver 2.0 for Empower™ on the Citrix Server.
Follow the instructions given in *chapter 2.2, page 5*.



- 2 Install the Metrohm IC Driver 2.0 for Empower™ on every client (LAC/E or computer) to which a Metrohm IC instrument is connected.
Follow the instructions given in *chapter 2.2, page 5*.



3 Uninstalling

- 1 In order to uninstall the **Metrohm IC Driver 2.0 for Empower™**, start the file **setup.exe** on the installation CD or go to:
 - in Windows XP and older - **Control Panel ▶ Software**
 - in Windows Vista / Windows 7 - **Control Panel ▶ Programs and Features**and click on **Metrohm IC Driver 2.0 for Empower**. Then select **Change/Remove**.