

Application Bulletin 800105015EN

Installation Instruction for ProfIC Vario 8 Cation

The ProfIC Vario 8 Cation is a Professional IC Vario system for the analysis of non-suppressed cations or anions with Inline Sample Preconcentration and Matrix Elimination. «ProfIC Vario 8» safely masters all routine tasks in ion chromatography. It is simple to use and extremely reliable.

For the installation instructions for suppressed systems, please check Application Bulletin 800105014EN.

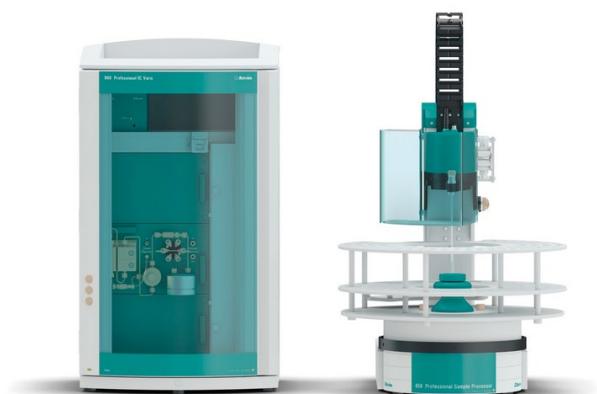


Table of contents

1.	Delivery Package	2
	IC	2
	Detector	2
	Sample processor	2
	Accessories	2
	Optional	2
2.	Installation	2
2.1.	Installation of the software	2
2.2.	Accessory Kit: Vario/Flex Basic (6.5000.000)	2
2.3.	Accessory Kit: Vario/Flex ONE (6.5000.010)	2
2.4.	858 Professional Sample Processor	3
2.4.1.	Capillary connections on the 858	3
2.5.	Interconnection of devices	3
2.6.	940 Professional IC Vario	3
3.	MagIC Net	4
3.1.	Configuration	4
3.2.	Method adjustment	4
3.3.	Purge of the system	4
3.4.	User-defined determination	4
4.	Optional equipment	5
4.1.	Liquid Handling Station	5
4.2.	Eluent Production Module	6
4.3.	Alternative MSM rinsing and regeneration methods	6

1. Delivery Package

Delivered with ProfIC Vario 8 Cation package:

Nr	Article no.	Article designation
----	-------------	---------------------

IC

1	2.940.1100	Professional IC Vario ONE
---	------------	---------------------------

Detector

1	2.850.9010	IC Conductivity Detector
---	------------	--------------------------

Sample processor

1	2.858.0030	Professional Sample Processor - Pump - Injector
---	------------	---

Accessories

1	6.1602.150	Bottle attachment / GL 45 – 3 × UNF 10/32
1	6.1608.070	Eluent bottle / 2 L /GL 45
1	6.1825.230	PEEK sample loop 10 µL

Optional

1	6.6059.4*	MagIC Net 4.* Professional (* newest MagIC Net version) CD – 1 license
1	6.6059.4*	MagIC Net 4.* Multi (* newest MagIC Net version) - 3 licenses
1	6.2041.760	Sample rack 54 × 11 mL + 1 × 300 mL
1	6.2041.440	Sample rack 148 × 11 mL + 3 × 300 mL
1	6.2743.040	Sample tubes 2.5 mL
1	6.2743.050	Sample tubes 11 mL
1	6.2743.070	Stopper with perforation
1	6.xxxx	Metrosep C Supp column depending on application
1	6.xxxx	resp. Metrosep C Supp Guard column
1	6.1010.300	Metrosep C PCC 1/4.0
1	6.1010.300	Metrosep C PCC 1 HC/4.0
1	6.1010.300	Metrosep C PCC 1 VHC/4.0
1	2.941.0010	Eluent Production Module
1	6.2769.110	Sensor empty 2 L
1	6.5330.130	IC Equipment: LQH Station
1	2.800.0010	800 Dosino
1	6.1580.150	807 Dosing Unit 5 mL
1	6.1014.200	Metrosep I Trap 1 - 100/4.0
1	6.2744.080	M6 thread / UNF 10/32 coupling

2. Installation

Following is a detailed description of how to install a ProfIC Vario 8 Cation.

We strongly recommend that the individual steps are carried out in the order given below.

2.1. Installation of the software

All programs must be shut down first. Make sure no Metrohm instrument is connected to the PC. Install MagIC Net with the help of the MagIC Net CD. The Microsoft Installation Wizard is accepted and executed. All the standard directories proposed by the program should be accepted. Restart Windows.

Now as soon as you connect a new Metrohm instrument to the PC via USB, the driver is installed and a window will pop up in MagIC Net asking if you'd like to store this device in your configuration. If you do, please answer with yes. The names will be checked later in this installation instruction.

2.2. Accessory Kit: Vario/Flex Basic (6.5000.000)

Using the Accessory Kit Vario/Flex Basic, install the Professional IC Vario. Remove the handle, place the detector block in the instrument, and connect the detector cable. Then, remove the transport locking screws, connect the leak sensor cable, and connect the drainage tubing.

Next, set up the waste collector by assembling the cap and screwing it onto the vessel. Then hang the waste collector holder on the side of the IC so droplets can be observed coming out of the capillaries that are later connected to the collector. Attach the waste tube to the vessel and lead it to the waste canister. If the tube is too long, please shorten it, because it is important to have a high level difference for the liquid to drain properly.

The power cable and USB cable (6.2151.020) are plugged into the rear of the Professional IC Vario. Please don't switch on the instrument yet. This step will follow after the installation is completed.

2.3. Accessory Kit: Vario/Flex ONE (6.5000.010)

In the box with the Accessory Kit ONE, you will find all the accessories for setting up the eluent bottle. Please lead the aspiration tube for the eluent through the M8 stopper, the o-ring, and the eluent cap. Then fix the white weight (6.2744.210), the adaptor (6.2744.210), and the aspiration filter (6.2821.090) on the eluent aspiration tube, all the while being careful not to touch the filter and its connections with bare hands in order to avoid cross contamination. Also fix the filled adsorber tube on the eluent cap. Please refer to the 940 Professional IC Vario manual for a detailed description.

2.4. 858 Professional Sample Processor

For a detailed description, please refer to the 858 Professional Sample Processor manual. In general, you will have to do the following: first, plug in the Swing Head connection cable and the power supply cable. The controller cable (6.2151.000) is plugged into the plug "Contr." on the 858 and connected to the IC device via USB. The Sample Processor initializes and lifts its Swing Head, once the IC device it is connected to is recognized by the software. For this, you have to plug the USB cable of the IC into the PC and turn it on. Afterwards, it is possible to mount the retaining plate, the needle, and the safety shield.

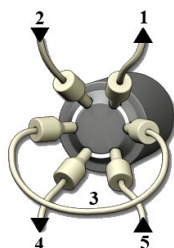
For the following installations, please shut down the IC again and disconnect the 858 Professional Sample Processor from the power supply.

2.4.1. Capillary connections on the 858

Inline Matrix Elimination is a technique that is able to separate ionic analytes from the uncharged matrix without sample preparation cartridges (SPE cartridges). In addition, the counter ions of the analytes and of the matrix are removed. The sample is measured with the help of a sample loop which is placed on an additional valve, and then washed off (by means of a transfer solution) onto a preconcentration column. The transfer solution can be ultrapure water or a diluted solvent. This solution rinses any uncharged and organic matrix components off of the preconcentration column.

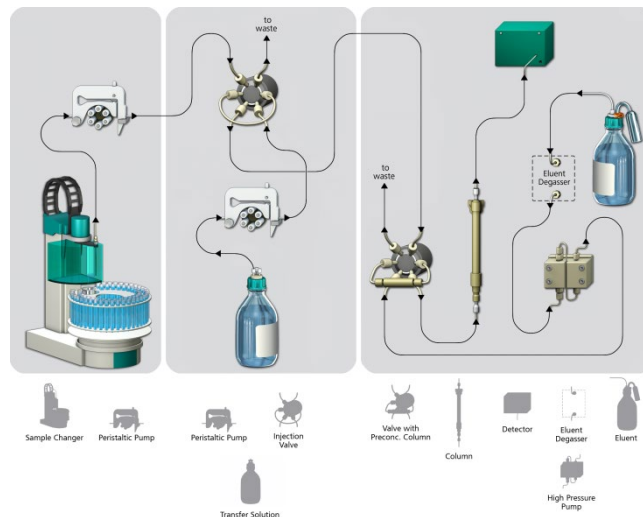
The injector at the 858 Professional Sample Processor needs to be equipped in the following way:

1. Sample outlet capillary - PTFE, 0.5 mm ID, to be placed into the waste collector
2. Sample aspiration capillary - PTFE, 0.5 mm ID, connected to the aspiration tube on the Swing Arm via the white/white peristaltic pump tubing (6.1826.360)
3. 10 μ L sample loop (6.1825.230)
4. Transfer solution outlet capillary - PTFE, 0.5 mm ID, to be connected to position 1 of the IC injection valve
5. Transfer solution inlet capillary - PTFE, 0.5 mm ID, connected to the transfer solution bottle via the white/white peristaltic pump tubing (6.1826.360)



2.5. Interconnection of devices

The entire setup of the ProfIC Vario 8 Cation package is depicted here:

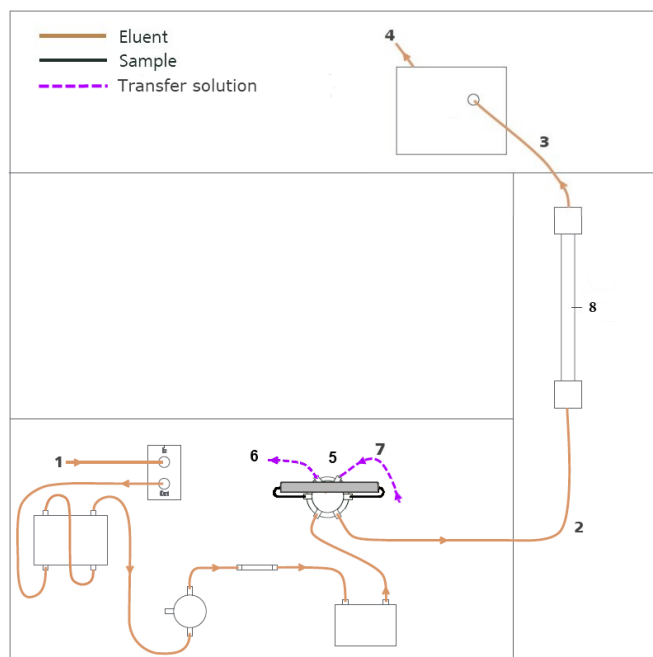


Prepare and degas an eluent suitable for the column you plan to use (see column leaflet). For the Metrosep C 4 - 150/4.0, a solution of 1.7 mmol/L HNO_3 + 0.7 mmol/L dipicolinic acid (DPA, 2,6-Pyridinedicarboxylic acid) is adequate.

2.6. 940 Professional IC Vario

Capillaries are connected according to the following list and diagram:

1. Connection to the eluent bottle
2. Capillary to column inlet – 0.25 mm ID
3. Detector inlet capillary
4. Detector outlet capillary
5. Sample aspiration capillary from the injector on the Sample Processor to the injection valve on the IC at position 1 – PTFE, 0.5 mm ID
6. Preconcentration column (6.1010.310)
7. Transfer solution outlet – PTFE, 0.5 mm ID, to be placed into the waste collector
8. The UNF 10/32 coupling (6.2744.040) is installed instead of the column to rinse the system with eluent. After rinsing, the column is installed.



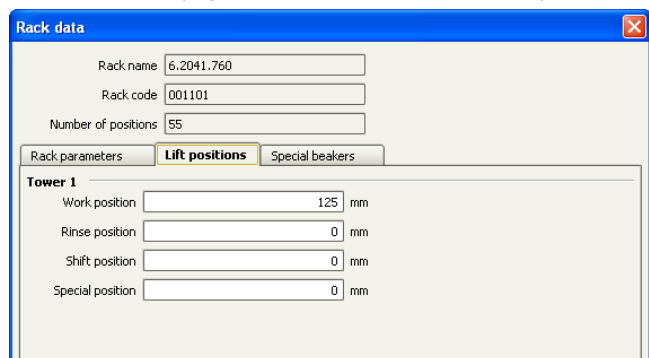
3. MagIC Net

3.1. Configuration

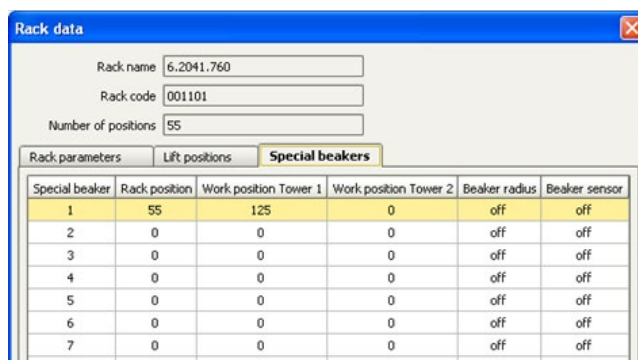
Now connect the USB cables from the instruments and turn their power on. Connected USB devices are automatically recognized when MagIC Net is started. After confirmation of the automatically generated requests, the devices and columns are stored in the configuration. The devices are predefined as "940 Professional IC Vario 1" and "858 Professional Sample Processor 1". Name them accordingly, if other names appear in your configuration (e.g., due to changed settings on your computer).

In the window configuration, the 940 Professional IC Vario, the 858 Professional Sample Processor, and the Metrosep C 4 - 150/4.0 column are visible. Add and define the eluent.

The settings for the rack require a "work position" fitting to the respective rack (e.g., 125 mm for rack 6.2041.760).



Also define a special beaker for rinsing the needle. Fill a beaker with ultrapure water and place it at the defined position on the rack.



Special beaker	Rack position	Work position Tower 1	Work position Tower 2	Beaker radius	Beaker sensor
1	55	125	0	off	off
2	0	0	0	off	off
3	0	0	0	off	off
4	0	0	0	off	off
5	0	0	0	off	off
6	0	0	0	off	off
7	0	0	0	off	off
~	~	~	~

3.2. Method adjustment

The method for this configuration can be found in the example method folder on your MagIC Net CD. In the method window, import the method for ProfIC Vario 8 Cation from the installation CD: Go to File → method manager and choose your method group. Afterwards, click on edit → import and choose the pathway on the installation CD: MagICNet\examples\methods\ ProfIC Vario \ProfIC Vario_8_Cation.imet

In the method window, open the ProfIC Vario 8 Cation method and assign the following equipment: first, define the rack of the connected sample processor, then assign the eluent to the IC pump and assign the Metrosep C 4 - 150/4.0 column to the cation analysis. Adjust the temperature of the column oven to 30 °C and turn it on.

Perform a method test and save the method.

3.3. Purge of the system

Before inserting the column, flush the system for about 10 minutes and eliminate air bubbles (by using the purge valve and syringe).

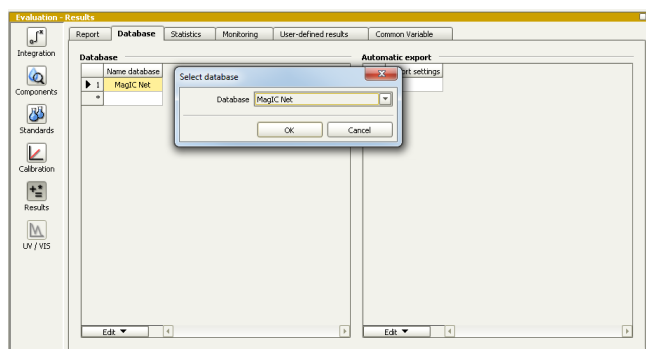
Now insert and rinse the precolumn for 10 minutes by leading the outlet directly into the waste. Afterwards connect the analytical column and flush it likewise for 10 minutes. Only afterwards is the column completely connected to the flow path of the eluent (see the 940 Professional IC Vario manual for more details).

In order to start the equilibration, go to the window workplace, load the cation method, and press "Start HW".

Equilibrate the system until the baseline is stable.

3.4. User-defined determination

In the window method, under Evaluation, enter the ions and the concentrations of the required standards. Then add the correct Database in the Evaluation window (Evaluation → Results → Database) for the method.



In the window workplace, set up a “determination series”, describing your samples by ident, vial number, sample type (standard, blank, or sample, etc.). After putting the analyte solutions onto the rack, press “Start”.

For evaluation and after recording the first chromatogram, check the retention times of your compounds. Since they depend on the performance of your column and the dead volume of your system, you may have to adjust them in your method.

4. Optional equipment

4.1. Liquid Handling Station

The Liquid Handling Station (LQH Station) consists of two functional units: the rinsing unit and the dilution unit. As an add-on, it is mainly useful for rinsing the needle both on the inside and outside, thus minimizing contamination.

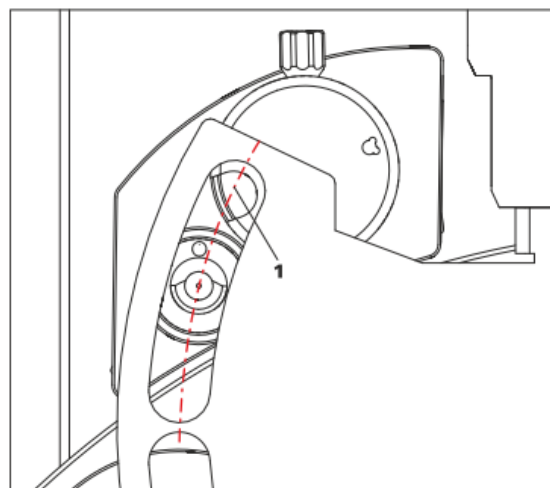
The following accessories are needed:

Nr	Article no.	Article designation
1	6.1819.100	FEP aspiration tubing to 2 L bottle
1	2.800.0010	800 Dosino
1	6.1580.150	5 mL 807 Dosing Unit
1	6.1014.200	Metrosep I Trap 1 - 100/4.0
1	6.1608.070	Eluent bottle /2 L / GL 45
1	6.1831.180	PEEK capillary ID 0.5 mm, 3 m
1	6.2744.010	Pressure screw 5×
1	6.2841.120	Liquid Handling Station left
1	6.2744.080	M6 thread/UNF 10/32 coupling

The installation of the LQH Station is done in two steps. First mount and align the Liquid Handling Station on the left-hand side of the Sample Processor. To accomplish this, remove the sample rack and place the Liquid Handling Station on the black rail of the Sample Processor. Secure it temporarily in place with the screw and then loosen the small screws of the foot. The rack is replaced on the Sample Processor and the

small screws are fixed in a way that the approximate distance between the LQH Station and the rack is 0.5–1 mm.

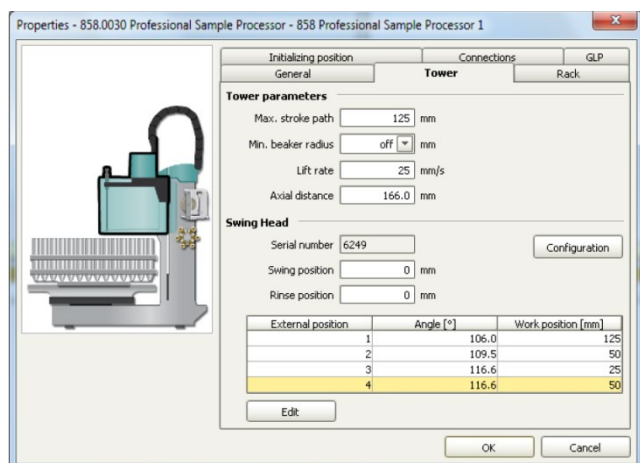
Now the Liquid Handling Station must be aligned with the retaining plate. For this, loosen the big screw again and move the LQH Station underneath the retaining plate. Looking from above, you should now be able to see the small hole of the rinsing unit and part of the larger hole of the dilution vessel, similar to the following diagram.



When you have found the correct position, please tighten the screw to secure the LQH Station completely to the Sample Processor.

In a second step, the work positions for the sample tube need to be defined in the configuration.

Please go to the configuration of the Sample Processor. Under Tower, it is possible to define external positions of the Swing Head. For rinsing purposes, only the External Position 1 (small inner tube) and the External Position 2 (outer tube of rinsing unit) have to be defined. The proposed angles are only guiding values; they need to be adapted for every system separately. This can be done easily by adjusting the angles in the manual control window. As soon as you have found the correct angles, make sure to save them in the configuration. The work positions are fixed for all of the different setups.

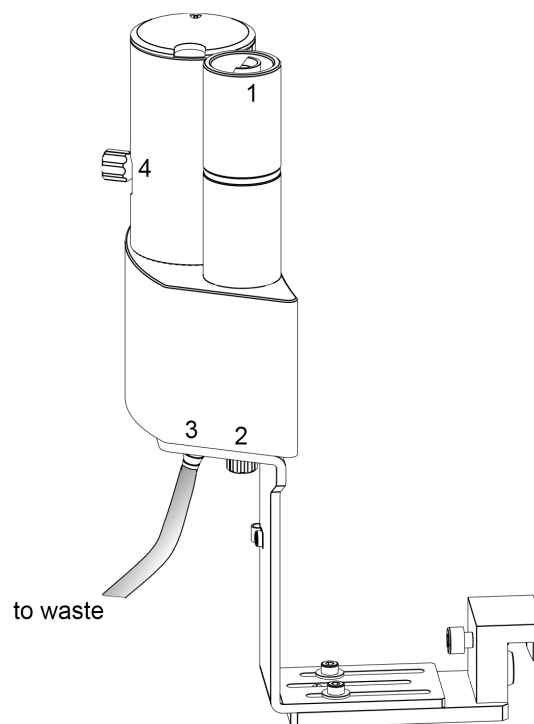


Mount the Dosino on the 5 mL 807 Dosing Unit and connect the FEP aspiration tube M6 (6.1819.100) on Port 2 of the Dosino. Then, fill the 2 L bottle with ultrapure water and secure the Dosino with the 807 Dosing Unit on it.

Disconnect the 858 Sample Processor from its power source and plug the Dosino into a free MSB position on the 858 Professional Sample Processor. Reconnect the Sample Processor to the power source.

Now connect the Dosino port 1 with an adapter (6.2744.080) and a capillary to the PEEK pressure screw (number 2 in the following graphic) on the Liquid Handling Station. Then use the Dosino to push water into the rinsing unit from below when needed. Here, it is recommended to install an I-Trap (6.1014.200) into the flow path of the water, in order to remove any impurities that could have accumulated in the water reservoir. During the rinsing process, the inner tube of the rinsing unit is meant to be filled constantly with fresh ultrapure water so the aspiration needle can be thoroughly cleaned from the outside.

Please secure the PVC tubing (6.1801.120) to the disposal connector on the bottom of the Liquid Handling Station and lead its other end into a waste canister.



Number 4 in the picture above shows the attachment point of a capillary in case of a dilution feature, and number 1 indicates the rinsing entity.

The rinsing time program with the Liquid Handling Station works in a similar way to the one used for rinsing with a special beaker: just move to the desired angle, go into work position, and start the Dosino. Make sure to always dispose the waste in the external position 2.

4.2. Eluent Production Module

The 941 Eluent Production Module prepares fresh new eluent out of eluent concentrate and ultrapure water. For installation instructions and further information, please refer to the 941 Eluent Production module manual.

4.3 Alternative MSM rinsing and regeneration methods

For alternative suppressor rinsing and regeneration methods and setups, please refer to Application Bulletin 800105018EN.