

1 Minimum system requirements

Please refer to the Empower™ software documentation for information regarding the technical requirements for your computer (PC).

Application software

- Empower™ 3 software
- Microsoft Internet Explorer 8.0

Devices supported

The Metrohm IC Driver for Empower™ supports the following devices and instruments:

- **850 Professional IC**
(version: 2.850.1010, 2.850.2010, 2.850.2030)
- **881 Compact IC pro**
(version: 2.881.0010, 2.881.0020, 2.881.0030)
- **930 Compact IC Flex**
(version: 2.930.1100, 2.930.1160, 2.930.1200, 2.930.1260, 2.930.1300, 2.930.1360, 2.930.1400, 2.930.1460, 2.930.1500, 2.930.1560, 2.930.2100, 2.930.2160, 2.930.2200, 2.930.2260, 2.930.2300, 2.930.2360, 2.930.2400, 2.930.2460, 2.930.2500, 2.930.2560)
- **940 Professional IC Vario**
(version: 2.940.1100, 2.940.1110, 2.940.1200, 2.940.1300, 2.940.1400, 2.940.1410, 2.940.1500)
- **858 Professional Sample Processor**
(version: 2.858.0010, 2.858.0020)
- **800 Dosino**
(version: 2.800.0010)

One analyzer with conductivity detector (850/881/930/940), one sample changer (858) and up to five *800 Dosinos* can be operated in one configuration.

Firmware requirements

- 850/881 instruments: version 5.850.0109 or higher
- 858 instruments: version 5.858.0010 or higher
- 930/940 instruments: version 5.940.0100 or higher



NOTE

The Windows user must have administrator rights in order to be able to install the software.



CAUTION

Data loss may occur if the PC switches to sleep mode during a determination. The **sleep mode** should therefore be **disabled** in the energy settings of the operating system.

2 Installation



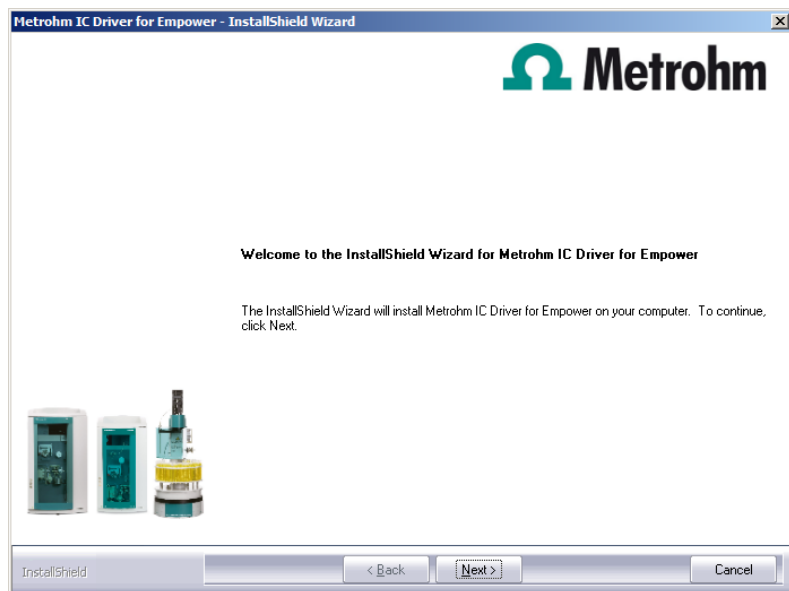
NOTE

Regulated operation (FDA)

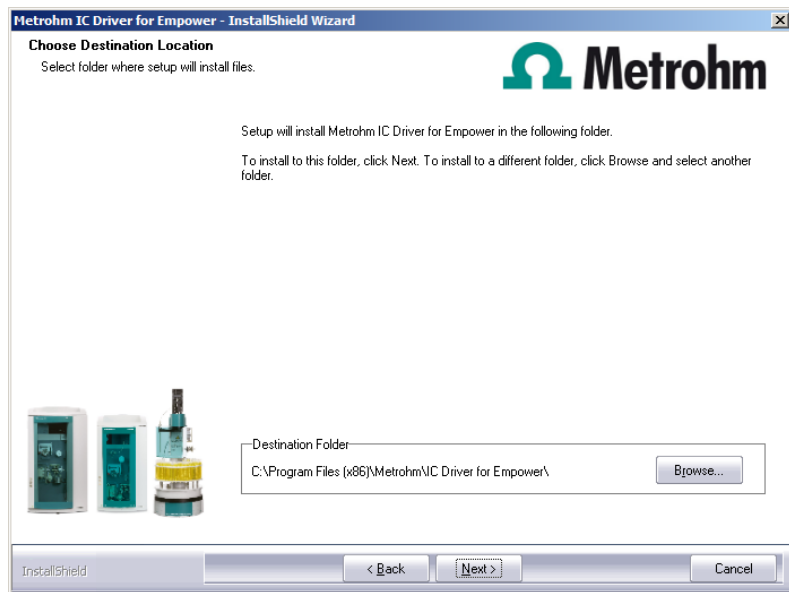
In regulated operation, the current installation needs to be checked with the "Database Installation Verification Utility" in the start menu folder of Empower before installing the Metrohm IC Driver for Empower™. Hereby a report is created that shows all the changes in the software Empower.

Start ► All Programs ► Empower ► verify files

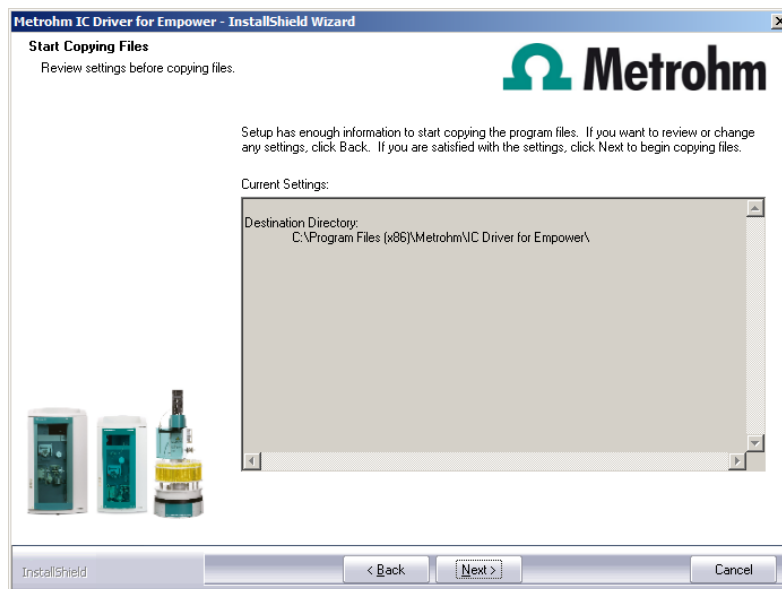
- 1** The installation process starts automatically when you insert the CD into the drive. If this option is disabled on your computer, double-click on the file **setup.exe**.
Afterwards, click on **[Next]**.
- 2** During the installation process, the Welcome screen appears first. Click on **[Next]** to install the software.



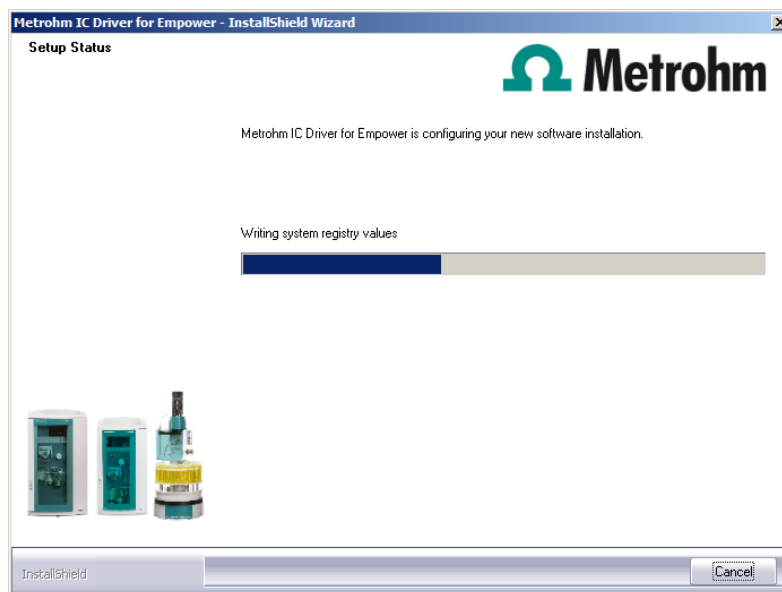
- 3 Now confirm the target folder for the **Metrohm IC Driver for Empower** installation with **[Next]** or select a different target folder with **[Browse...]**.



- 4 Click on **[Next]**.



5 Wait for the installation to complete.



6 Click on **[Finish]**.



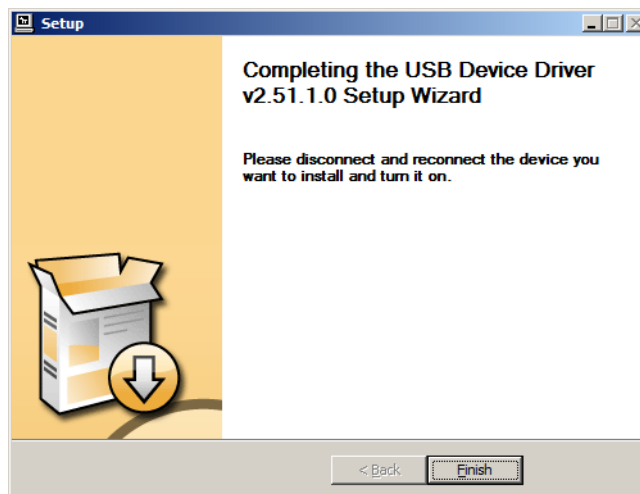
At the end of the installation, the file **Empower.log** will be created. This file contains all relevant information concerning your current **Empower** installation. Save this file on your hard drive for future reference and print it (add to IQ).



NOTE

The **InstallLog** file can be found in the **Windows** folder under the name **Empower.log**. It contains a listing of all files copied to your computer during the installation and a confirmation that the installation has been successfully completed.

- 7 Click on **[Finish]** to complete the installation.



- 8 In regulated operation, start the program "Database Installation Verification Utility" in the start menu.

Start ► All Programs ► Empower ► verify files

The result list shows all changes to the current Empower installation. Usually the Metrohm IC driver software does not cause any changes in Empower.

When using a special sample rack, the adjusted rack data is saved in the file „RackCodeMapping.html“. When performing the „verify files“ function, this file is shown as changed.

Print out the list with the record of changes and add to the IQ documents.

3 Uninstalling

1 In order to uninstall the **Metrohm IC Driver for Empower™**, start the file **setup.exe** on the installation CD or go to:

- in Windows XP and older - **Control Panel ► Software**
- in Windows Vista / Windows 7 - **Control Panel ► Programs and Features**

and click on **Metrohm IC Driver for Empower**. Then select **Change/Remove**.