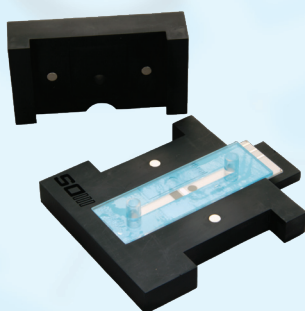


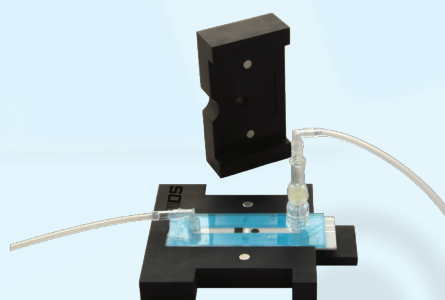
Spectroelectrochemical Reflection Flow-Cell for Thin-Layer Flow-Cell Screen-Printed Electrodes

Ref. TLFCL-REFLECELL

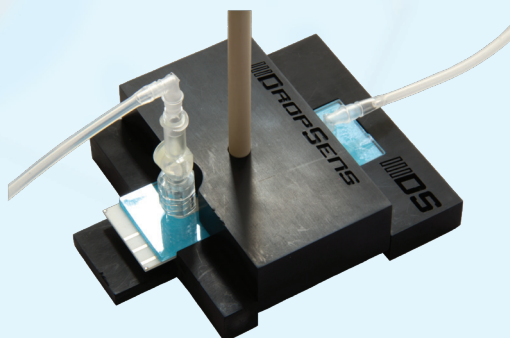
DropSens Spectroelectrochemical Reflection Flow-Cell for Thin Layer Flow-Cell Screen-Printed Electrodes (ref. TLFCL-REFLECELL) is a suitable holder for references **TLFCL110-CIR**, **TLFCL210AT-CIR** and **TLFCL510-CIR** when performing **spectroelectrochemical measurements**. Besides holding the Thin-Layer Flow-Cell Screen-Printed Electrodes the upper cover has a hole for fitting ref. **RPROBE-VIS-UV**, getting an easy and comfortable set-up for reflection experiments. The possibility of carrying out these experiments under **flow conditions** is possible in combination with ref. **TLFCL-FLOWFITTING** and ref. **TLFCL-INLINEPORT** accessories. It also has the innovative open-close system without screws for an easy sensors replacement.



The TLFCL Screen-Printed Electrodes are easily placed on the holder.



Inlet channel is the one located closer to the circular working electrode, also the In-line Luer Injection Port (ref. TLFCL-INLINEPORT) when is used.



The upper part of this holder can be simply placed due to two magnets that allow an easy sensors replacement. The reflection probe (ref. RPROBE-VIS-UV) fits in the specially designed hole over the circular working electrode.

Related products



TLFCL510-CIR



TLFCL-FLOWFITTINGS



SPELEC



TLFCL110-CIR



TLFCL210AT-CIR

Full Catalogue



Parque Tecnológico de Asturias - Edif. CEEI. 33428 LLanera (Asturias). Spain
(+34) 985 27 76 85 - info@dropsens.com - www.dropsens.com

Contact Form

