

Glassy Carbon Electrode Tip



Outstanding chemical resistance due to shaft made from glass

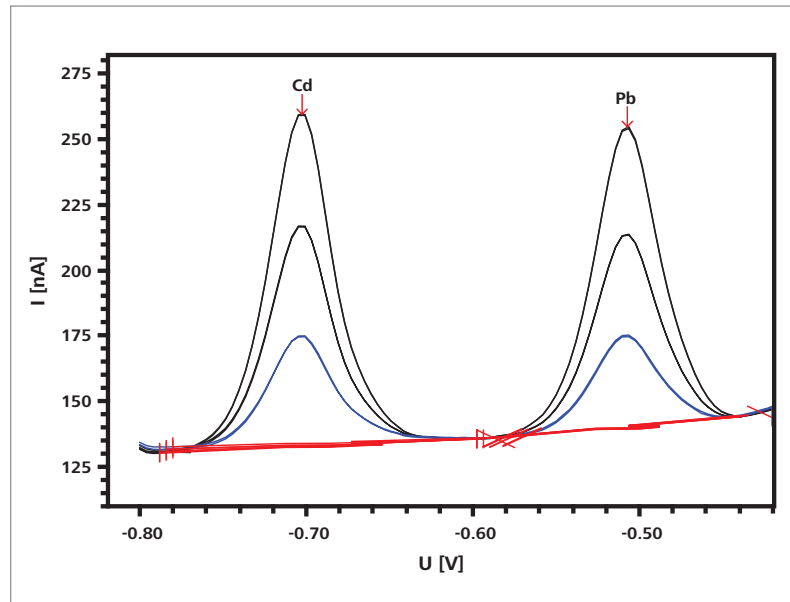


Highlights

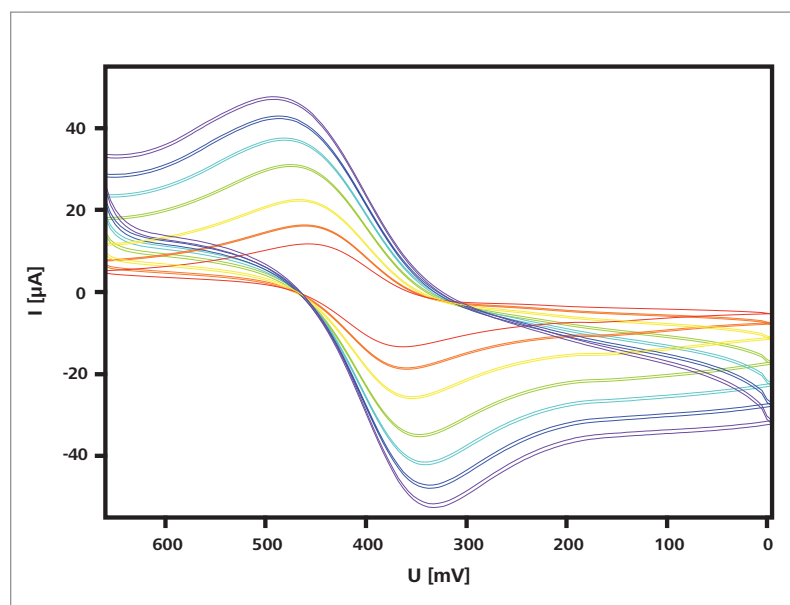
- Outstanding chemical resistance due to exclusive use of glass and glassy carbon
- Ideal for use in aggressive acids, bases, oxidants or solvents
- Long lifetime
- High stability and reproducibility of measurements
- Rapid conditioning
- Ideal for GLP-compliant work due to serial number and individual quality certificate
- Very low background current
- Can be combined with all existing RDE drives with M3 threads
- Fits all Metrohm VA stands

Applications

1. Determinations of cadmium and lead on a mercury film electrode



2. Experiments in Research and Development with cyclic voltammetry



Technical data

Electrode material	Glassy carbon (GC)
Diameter of the active zone	2.0 mm ± 0.1 mm
Shaft material	Glass
Shaft diameter	8.0 mm
Shaft length	52.5 mm
Thread connection	M3
Temperature range	0 - 50 °C

Ordering information

6.1204.600 Glassy carbon electrode tip, shaft made of glass

Additional

6.1204.210 Driving axle for rotating disk electrode (RDE) with corrosion-resistant titanium axle

6.1204.220 Driving axle for rotating disk electrode (RDE) with corrosion-resistant titanium axle and mercury contact

www.metrohm.com