

Platinum electrode tip



in a glass shaft, for CVS applications



Highlights

- Outstanding chemical resistance through the exclusive use of glass and platinum
- Operation also used in aggressive acids, bases, oxidants or solvents
- Long lifetime
- High stability and reproducibility of the measurements
- Rapid conditioning
- Ideal for GLP-compliant work due to serial numbers and individual quality certificates
- Very low background current
- Can be combined with all existing RDE drives with M3 threads
- Fits all Metrohm VA stands

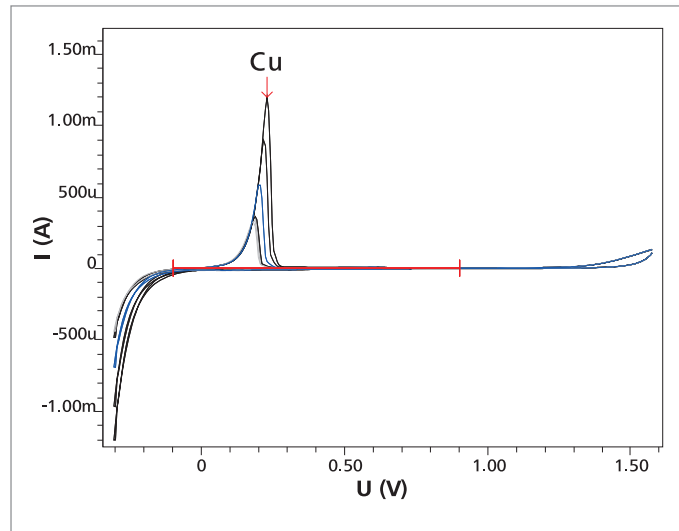
Robust and long-lived

The new platinum electrode tip with glass shaft was especially designed for the determination of organic additives in galvanic baths by CVS (cyclic voltammetric stripping). Of course, it is also suitable for any other applications that can be performed with platinum electrodes, in particular when aggressive media are involved. Only the platinum electrode material and the glass shaft come in contact with the solution to be measured. This means that the electrode tip has outstanding chemical resistance and a long lifetime – even in electrolytes such as concentrated mineral acids or organic solvents.

The platinum wire is embedded in glass. Hence, there is no gap between the two materials and no need for filler or adhesive. The perfectly polished surface of the electrode tip results in exceptionally low background currents. Each electrode tip carries an indelible serial number and hence, is always clearly identifiable. Furthermore, you receive a test certificate for each individual electrode. These features make GLP-compliant documentation easier for you.

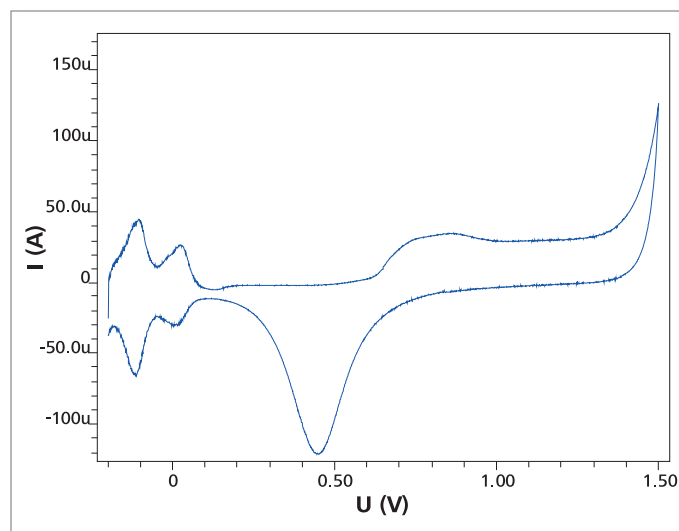
Applications

1. Determination of organic additives through CVS (cyclic voltammetric stripping), for example in acidic copper baths, tin baths or tin-lead baths



Typical application: Determination of an organic additive in an acidic copper bath by CVS (cyclic voltammetric stripping)

2. Cyclovoltammetric experiments in research and development



Cyclic voltammogram in 0.5 mol/L sulfuric acid

Technical specifications

Electrode material	Pt
Diameter of the active area	2 mm ± 0.05 mm
Shaft material	glass
Shaft diameter	7.75 mm
Shaft length	52.5 mm
Connecting thread	M3
Temperature range:	0 – 50 °C

Ordering information

6.1204.610 Platinum electrode tip 2 mm for CVS, glass shaft

Compatible RDE drives

6.1204.210 Drive for rotating disk electrodes (RDE) with corrosion-resistant titanium axle

6.1204.220 Drive for rotating disk electrodes (RDE) with corrosion-resistant titanium axle and mercury contact

www.metrohm.com