

IC Application Note No. U-16

Title: Caffeine in cola soft drinks

Summary: Determination of caffeine in a cola soft drink using RP chromatography with UV/VIS detection.

Sample: Cola soft drink

Sample Preparation: Direct injection after degassing

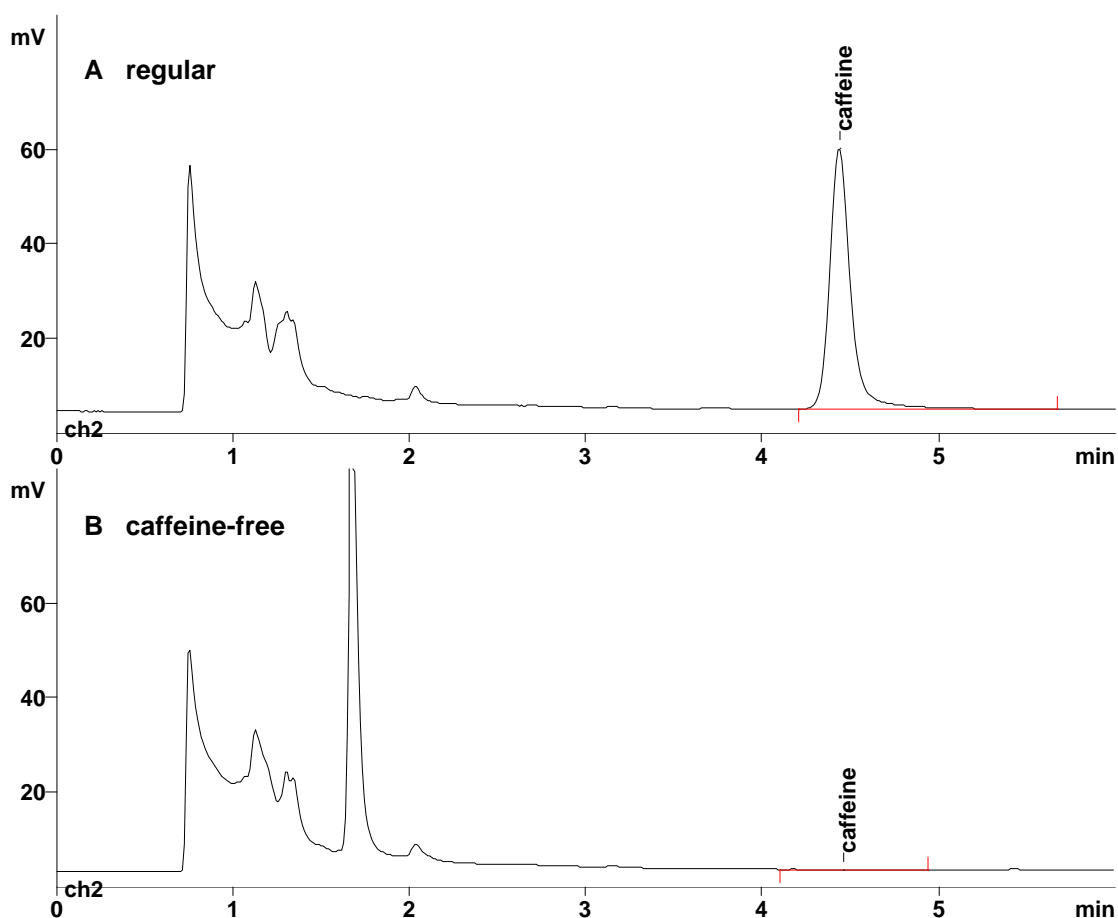
Column: Prontosil 120 C18 AQ (Bischoff)

Wavelength: 254 nm

Eluent: 25 mmol/L sodium dihydrogenphosphate,
30% acetonitrile

Flow: 1.2 mL/min

Injection Volume: 1.5 μ L



Results:	Caffeine (regular) mg/L	Caffeine (caffeine-free) mg/L
	141.3	n.d.