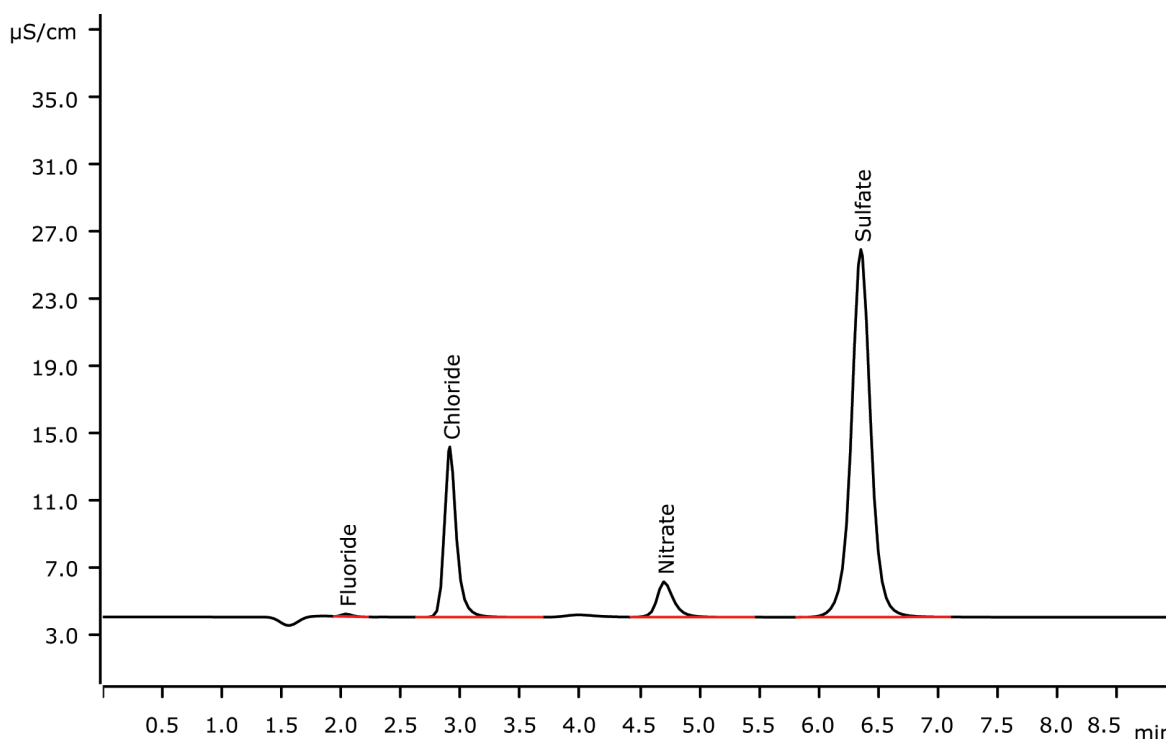


# Fast IC: Drinking water analysis including fluoride within less than seven minutes



Fast IC means short runtimes and high sample throughput on short columns with a strong eluent. Under the same condition as in AN-S-322, drinking water analysis including fluoride is possible within seven minutes on a Metrosep A Supp 5 - 100/4.0.

## Results

Anion	Concentration [mg/L]
Fluoride	0.07
Chloride	7.08
Nitrate	4.01
Sulfate	38.23

## Sample

Drinking water

## Sample preparation

None

## Columns

Metrosep A Supp 5 - 100/4.0	6.1006.510
Metrosep A Supp 4/5 Guard/4.0	6.1006.500

## Solutions

Eluent	4.6 mmol/L sodium carbonate 1.3 mmol/L sodium hydrogen carbonate 5% acetone
Suppressor regenerant	100 mmol/L sulfuric acid
Rinsing solution	STREAM

## Analysis

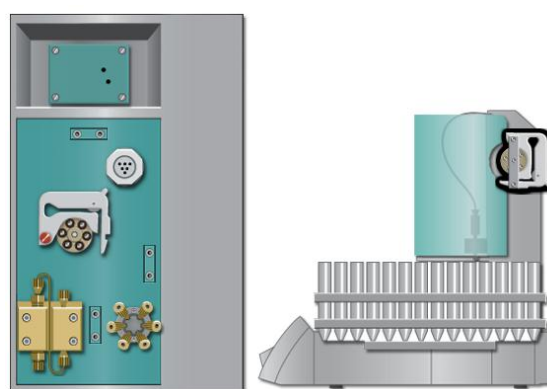
Conductivity detection after sequential suppression

## Instrumentation

930 Compact IC Flex SeS/PP/Deg	2.930.1560
IC Conductivity Detector	2.850.9010
863 Compact IC Autosampler	2.863.0010
MSM Rotor A	6.2832.000

## Parameters

Flow rate	0.8 mL/min
Injection volume	20 µL
P <sub>max</sub>	15 MPa
Recording time	9 min
Column temperature	Room temperature



[www.metrohm.com](http://www.metrohm.com)

 **Metrohm**