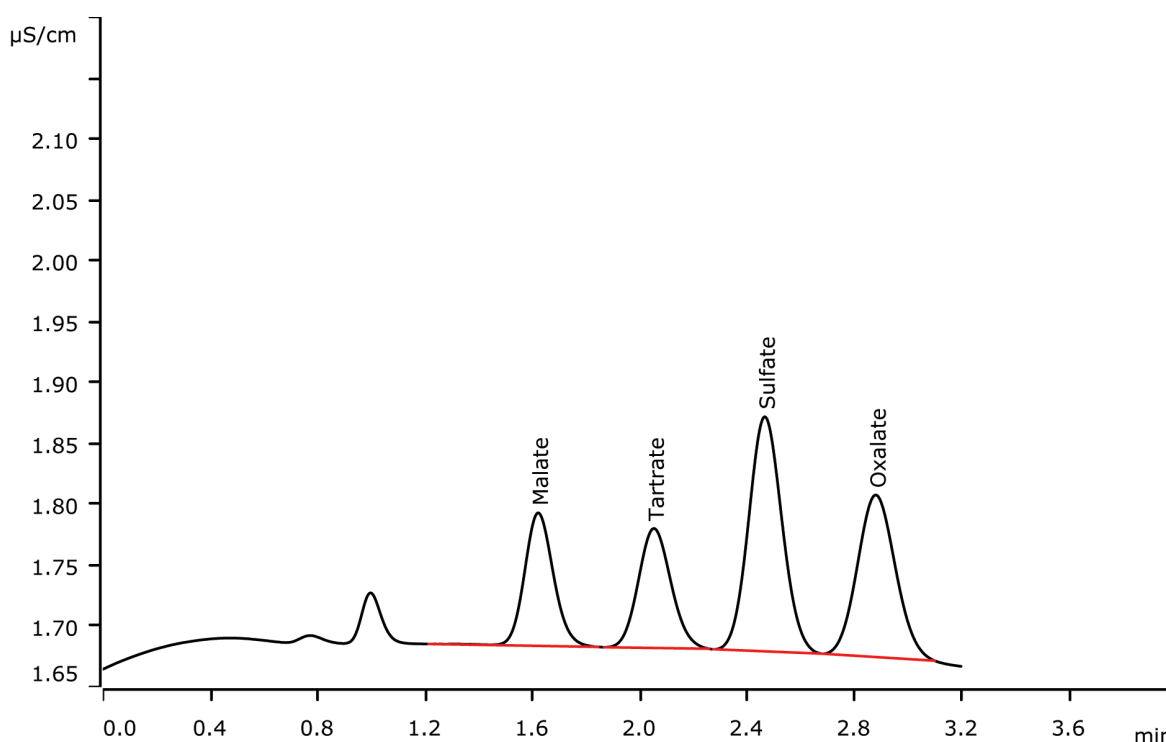


# Fast IC: Separation of organic acid anions besides sulfate within three minutes



Fast IC means high sample throughput achieved on short columns with relatively high flow rates and strong eluents. Malate, tartrate and oxalate are well separated from sulfate within three minutes using a Metrosep A Supp 10 - 50/2.0.

## Results

Anion	Concentration [mg/L]
Malate	1.00
Tartrate	1.00
Sulfate	1.00
Oxalate	1.00

## Sample

Standard solution

## Sample preparation

None

## Columns

Metrosep A Supp 10 - 50/2.0	6.1020.250
Metrosep A Supp 10 Guard/2.0	6.1020.600

## Solutions

Eluent (941 Eluent Production Module)	5.0 mmol/L sodium carbonate 5.0 mmol/L sodium hydrogen carbonate
Suppressor regenerant	500 mmol/L sulfuric acid
Rinsing solution	STREAM

## Analysis

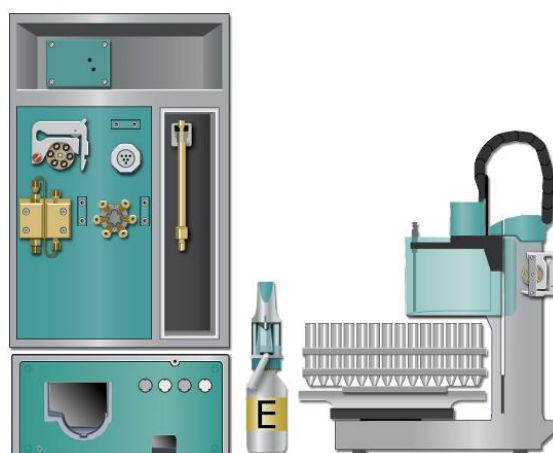
Conductivity detection after sequential suppression

## Instrumentation

940 Professional IC Vario ONE/SeS/PP	2.940.1500
IC Conductivity Detector	2.850.9010
941 Eluent Production Module	2.941.0010
800 Dosino	2.800.0010
858 Professional Sample Processor	2.858.0020
MSM Rotor A	6.2832.000

## Parameters

Flow rate	1.0 mL/min
Injection volume	10 µL
P <sub>max</sub>	25 MPa
Recording time	3.2 min
Column temperature	45 °C



[www.metrohm.com](http://www.metrohm.com)

 **Metrohm**