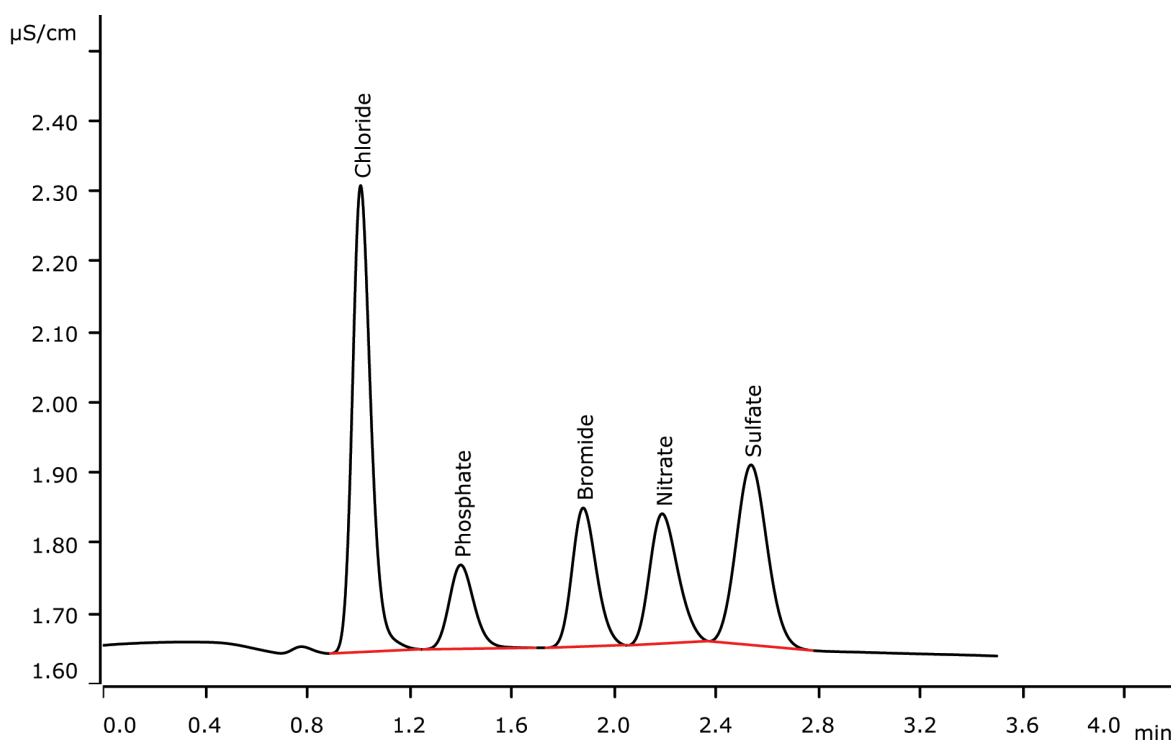


# Fast IC: Separation of standard anions within three minutes



Fast IC means high sample throughput achieved on short columns with relatively high flow rates and strong eluents. Here, the standard anions have been separated within three minutes on a Metrosep A Supp 10 - 50/2.0.

## Results

Anion	Concentration [mg/L]
Chloride	0.500
Phosphate	0.500
Bromide	0.500
Nitrate	0.500
Sulfate	0.500

## Sample

Standard solution

## Sample preparation

None

## Columns

Metrosep A Supp 10 - 50/2.0	6.1020.250
Metrosep A Supp 10 Guard/2.0	6.1020.600

## Solutions

Eluent (941 Eluent Production Module)	5.0 mmol/L sodium carbonate 5.0 mmol/L sodium hydrogen carbonate
Suppressor regenerant	500 mmol/L sulfuric acid
Rinsing solution	STREAM

## Analysis

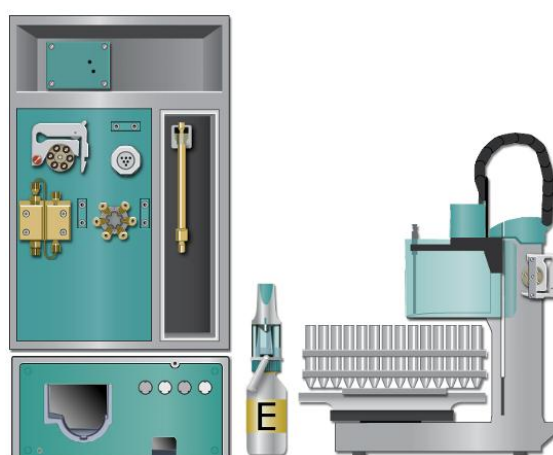
Conductivity detection after sequential suppression

## Instrumentation

940 Professional IC Vario ONE/SeS/PP	2.940.1500
IC Conductivity Detector	2.850.9010
941 Eluent Production Module	2.941.0010
800 Dosino	2.800.0010
858 Professional Sample Processor	2.858.0020
MSM Rotor A	6.2832.000

## Parameters

Flow rate	1.0 mL/min
Injection volume	20 µL
P <sub>max</sub>	25 MPa
Recording time	3.5 min
Column temperature	45 °C



[www.metrohm.com](http://www.metrohm.com)

 **Metrohm**