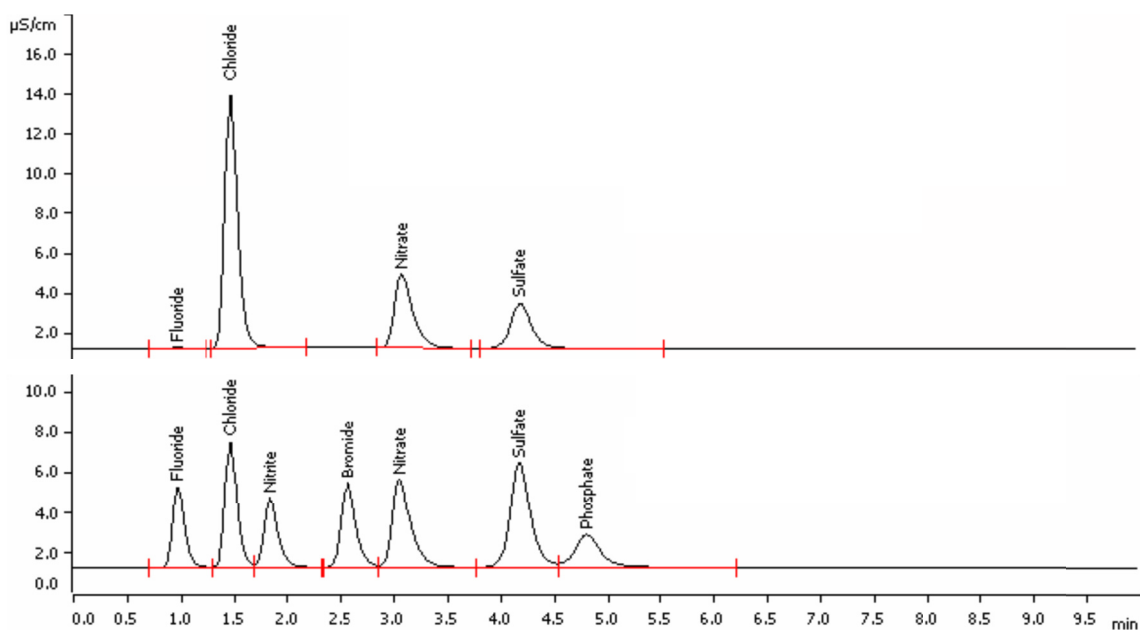


# Determination of anions in tap water within five minutes on Metrosep A Supp 16 - 100/2.0 column



The Metrosep A Supp 16 material is a high-capacity phase. It excels in high resolution and has the ability to load high sample concentrations. This material packed into a short column (100 mm) with low inner diameter (2 mm) allows to analyze standard anions within 5 min.

## Results

Peak number	Anion	Standard [mg/L]	Tap water [mg/L]
1	Fluoride	2.0	n.q.
2	Chloride	5.0	9.74
3	Nitrite	5.0	n.d.
4	Bromide	10.0	n.d.
5	Nitrate	10.0	8.20
6	Sulfate	10.0	4.69
7	Phosphate	10.0	n.d.

# Method description

## Sample

Tap water (top), standard solution (bottom)

## Sample preparation

Direct injection

## Column

Metrosep A Supp 16 - 100/2.0	6.1031.210
Metrosep A Supp 16 Guard/2.0	6.1031.600

## Solutions

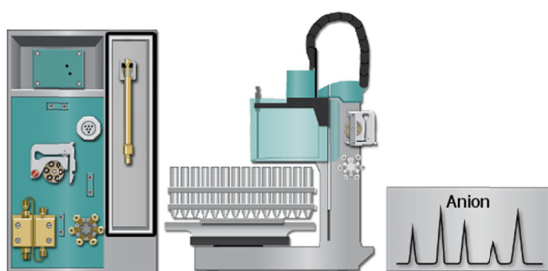
Eluent	7.5 mmol/L sodium carbonate 0.75 mmol/L sodium hydroxide
Regenerant	100 mmol/L sulfuric acid
Rinsing solution	Ultrapure water

## Analysis

Suppressed conductivity

## Parameters

Flow rate column	0.6 mL/min
Injection volume	10 $\mu$ L
P <sub>max</sub>	16.0 MPa
Recording time	5.5 min
Column temperature	50 °C



## Instrumentation

881 Compact IC pro – Anion – MCS	2.881.0030
858 Professional Sample Processor	2.858.0020

m